

# The Centerline

## Know your Neighbor: Wayne Boettcher

By: Yen-ti Verg-in

JUNE 2025

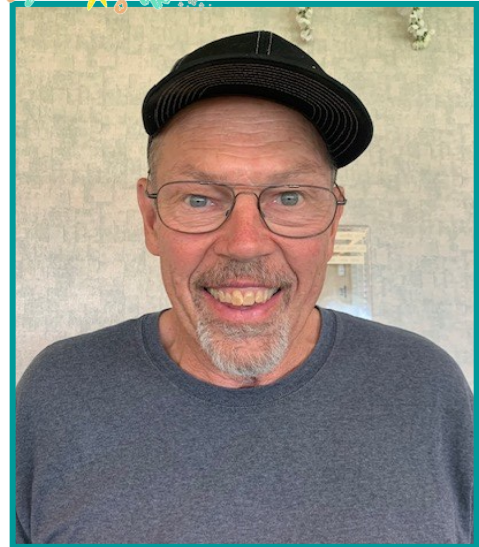
If you've ever stopped by the Kenai Senior Center early in the morning, you've probably noticed Wayne Boettcher. He typically arrives around eight o'clock when his wife drops him off on her way to work. Settling by the window with a tall glass of ice water, he reads his Bible, savoring the peaceful morning while birds, moose, and other creatures begin their day.

Wayne grew up in the small town of Lydia, Minnesota. His grandfather, who immigrated from Germany, built a feed mill there, and the family lived on three acres of land near the mill, raising their own animals and vegetables for food.

After high school, Wayne attended trade school to study auto mechanics. However, he soon realized that constantly working with greasy hands wasn't for him. Inspired by his younger sister, he decided to switch gears and enrolled at a Bible college in Iowa—where he met his lovely Cindy.

With a bright smile, Wayne fondly recalls proposing to Cindy in August, forty-five years ago. Cindy dreamed of a September wedding, leaving them little over a month to prepare. Remarkably, she managed to plan everything herself. To support his growing family, Wayne worked a variety of jobs—egg plants, dock crew, and various construction-related roles—all of which gave him a solid foundation in the field.

Wayne and Cindy are deeply devoted Christians and were eager to serve as missionaries. They worked hard to raise funds to support their mission work in Bolivia. However, their first attempt was cut short when Wayne contracted tuberculosis in his liver, requiring him to return to the U.S. for treatment at the Mayo Clinic. On their second trip to Bolivia, Wayne found that he couldn't tolerate the country's heat and humidity, forcing them to cut their mission short once again.



### Special Points of Interest

- Movie Afternoon—Nonnas— June 5
- No Host Dinner— Two Brother's Roadhouse— June 10
- Father's Luncheon Luncheon—June 13
- Birthday Lunch—June 18

**City of Kenai**  
**Kenai Senior Center**  
361 Senior Ct.  
Kenai, Alaska 99611  
**907-283-4156**  
**senior@kenai.city**

Continued on page 12

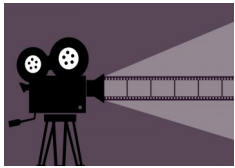
# JUNE 2025

Monday	Tuesday	Wednesday	Thursday	Friday
<b>2</b> 9a—Growing Strong 10a—Growing Strong 11a—Bells Noon—LUNCH 12:30p-4:30p—Bridge 1p—Choir 2p—Grief support Group for Widows/Widowers	<b>3</b> 9a– Chair Yoga 10a—Tai Chi 10a—TOPS Noon—LUNCH 12:30-1p—Bingo 12:30-4:30p Pinochle 1p—Wii Bowling	<b>4</b> <b>9a-Noon-Social Security</b> 9a—Growing Strong 10a—Growing Strong Noon—LUNCH 1p—Mexican Dominos 1p—Writers’ Group 1p-3p—Quilting/Crafting 2-3:30p Stronger Together Support Group/ <b>Family Caregiver Support Group</b>	<b>5</b> 9a– Chair Yoga 9:00a—Pool 10a—Tai Chi Noon—LUNCH 1p—Pool 1p—Wii Bowling 1-3p—Hand & Foot <b>3p—Movie Afternoon: Nonnas</b>	<b>6</b> 9a—Growing Strong 9a—10a Blood Pressure Check 9:30a-12p—Quilting 10a—Growing Strong Noon—LUNCH 1p—Wii Bowling 1-4:30p—Bridge
<b>9</b> 9a—Growing Strong 10a—Growing Strong 11a—Bells Noon—LUNCH 12:30p-4:30p—Bridge 1p—Choir 2p—Grief support Group for Widows/Widowers	<b>10</b> 9a– Chair Yoga 10a—Tai Chi 10a—TOPS Noon—LUNCH 12:30-1p—Bingo 12:30-4:30p Pinochle 1p—Wii Bowling <b>5:00p—No Host Dinner/ Two Brother’s Roadhouse</b>	<b>11</b> 9a—Growing Strong 10a—Growing Strong 11a—Noon/Bluegrass Noon—LUNCH 1p—Card Making w/ Kim 1p—Writers’ Group 1p-3p—Quilting/Crafting 2-3:30p Stronger Together Support Group	<b>12</b> 9a– Chair Yoga 9:00a—Pool 10a—Tai Chi Noon—LUNCH 12p—1:30p— Zoom Mtg Estate Planning w/ Attorney Chelsea Riekkola 1p—Pool 1p—Wii Bowling 1-3p—Hand & Foot <b>3p—Council on Aging</b> 5p—Cribbage 6:30p—Acoustic Jam	<b>13</b> 9a—Growing Strong 9a—10a Blood Pressure Check 9:30a-12p—Quilting 10a—Growing Strong <b>11:30a—LUNCH/ Father’s Day Luncheon</b> 1p—Wii Bowling 1-4:30p—Bridge
<b>16</b> 9a—Growing Strong 10a—Growing Strong 11a—Bells Noon—LUNCH 12:30p-4:30p—Bridge 1p—Choir 2p—Grief support Group for Widows/Widowers	<b>17</b> 9a– Chair Yoga 10a—Tai Chi 10a—TOPS Noon—LUNCH 12:30-1p—Bingo 12:30-4:30p Pinochle 1p—Wii Bowling	<b>18</b> <b>9a-Noon-Social Security</b> 9a—Growing Strong 10a—Growing Strong <b>Noon—LUNCH/ Birthday</b> 1p—Writers’ Group 1p-3p—Quilting/Crafting 2-3:30p Stronger Together Support Group	<b>19</b> 9a– Chair Yoga 9:00a—Pool 10a—Tai Chi Noon—LUNCH 1p—Pool 1p—Wii Bowling 1-3p—Hand & Foot 5p—Cribbage 6:30p—Acoustic Jam	<b>20</b> 9a—Growing Strong 9a—10a Blood Pressure Check 9:30a-12p—Quilting <b>10a—Senior Connection</b> 10a—Growing Strong Noon—LUNCH 1p—Wii Bowling 1-4:30p—Bridge
<b>23</b> 9a—Growing Strong 10a—Growing Strong 11a—Bells Noon—LUNCH 12:30p-4:30p—Bridge 1p—Choir 2p—Grief support Group for Widows/Widowers	<b>24</b> 9a– Chair Yoga 10a—Tai Chi 10a—TOPS Noon—LUNCH 12:30-1p—Bingo 12:30-4:30p Pinochle 1p—Wii Bowling	<b>25</b> 9a—Growing Strong 10a—Growing Strong <b>11a—”The Bear” &amp; “A Marriage Proposal”— Summit Theater Project</b> Noon—LUNCH 1p—Writers’ Group 1p-3p—Quilting/Crafting/ 2-3:30p Stronger Together Support Group	<b>26</b> 9a– Chair Yoga 9:00a—Pool 10a—Tai Chi <b>10a-9p—Day Trip to Homer</b> Noon—LUNCH/ 1p—Pool 1p—Wii Bowling 1-3p—Hand & Foot 5p—Cribbage 6:30p—Acoustic Jam	<b>27</b> <b>8-10 WAFFLES</b> 9a—Growing Strong 9a—10a Blood Pressure Check 9:30a-12p—Quilting 10a—Growing Strong Noon—LUNCH 1p—Wii Bowling 1-4:30p—Bridge
<b>30</b> 9a—Growing Strong 10a—Growing Strong 11a—Bells Noon—LUNCH 12:30p-4:30p—Bridge 1p—Choir 2p—Grief support Group for Widows/Widowers				

# Happy Birthday!

Day	Name	Day	Name		
1	Dennis Gease	12	Darlene Tachick	27	Jon Jackinsky
3	Katie Pault	14	Marilyn Bannock	28	Willena Brenden
7	Ronald Horvath	18	Velda Geller	29	Vera Barrett
7	Lee Sparlin	19	Kathy Heus	29	Cindy Harris
8	Tom Holland	20	Barbara Basas		
9	Bonita Duncan	22	Janet Hall		
9	Michele Demilta	25	Margaret Goggia		
10	Connie Carlson	25	Margaret Mullen		
11	Barbara Christian	25	Sieglinde Moore		
11	Carol Kitchen-Niedzialek	26	Linda Barnes		
11	Nicola Pine	26	James Dalluge		

## Thursday Afternoon Movie June 5, 2025 at 3:00p.m.



**Now showing: Nonnas**

After losing his beloved mother, a man risks everything to honor her by opening an Italian restaurant with actual nonnas -- grandmothers, as the chefs.



## NO-HOST DINNER

### Two Brother's Roadhouse Tuesday, June 10, 2025

Those leaving from the Senior Center parking lot will head out at 5:00p. Or, meet your friends at Two Brother's Roadhouse in Cooper Landing.

There will be limited transportation available at a charge of **\$10.00**, so RSVP early. Sign up at the Reception Desk.

It is important to let us know if you will be attending the No-Host Dinner but driving separately. We let the restaurant know ahead of time for seating capability and if there is a change or cancellation, we can notify you. Remember to let the receptionist know if you plan to attend, whether you ride the Senior Center van or have your own ride.



# dates to remember

Sunday, June 1	Anchorage Bowl Symphony Orchestra	2:00 pm
Wednesday, June 4	Social Security	9a–Noon
Thursday, June 5	Movie Afternoon: Nonnas	3:00 pm
Tuesday, June 10	“No Host” Dinner/ Two Brother’s Roadhouse	4:00 pm
Wednesday, June 11	Card Marking with Kimberly	1:00 pm
Thursday, June 12	Council on Aging Meeting	3:00 pm
Friday, June 13	Father’s Day Luncheon	11:30 am
Wednesday, June 18	Social Security	9a—Noon
	Birthday Lunch	Noon
Thursday, June 26	Day Trip to Homer	10a-9pm
Friday, June 27	Waffle Friday	8-10 am

## Kenai Senior Center Info

Monday—Friday, 8:00 am—5:00 pm  
**Need to speak with someone in administration?**

**Director**

**Kathy Romain**

(907) 283-8213 or kromain@kenai.city  
**VP Housing, Council on Aging**  
**Kenai Senior Connection, Inc.**

**Administrative Assistant**

**Red Piersee**

(907) 283-8212 or apiersee@kenai.city  
**Home Delivered Meals**  
**Benefits Counseling**  
**Vintage Pointe Housing Rental**

**Activity/Volunteer Coordinator,**

**Kayla Feltman**

(907) 283-8214 or kfeltman@kenai.city  
**Activities**  
**Volunteer Opportunities**  
**Senior Center Facility Rentals**

Do you need a ride or know someone who could use some meals? Maybe you’d like to pick up a meal instead of dining inside? We can help!

For Pick up Meals:

**Call the front desk**  
**by 10:30AM\* (M-F)**

For pick-up at **11:30**

**AM. Meals must**  
**be picked up from the front desk**  
**before 1:00PM.**



For Transportation:

Call the front desk at least **24 hours** in advance to schedule a ride. We will do our best, but same day transportation is not guaranteed.

Dining Room Meals (Congregate)

Monday-Friday 12pm-1pm

No reservations required

(Except for special events)

## Senior Farmer's Market Nutrition Program



**Will you be 60 years of age or older  
by September 30, 2025?**

Do you like fresh fruits and veggies but  
purchasing these items are a little hard  
on your pocketbook?

If you answered yes to both of the  
questions above you will be happy to  
hear that the Kenai Senior Center is a  
distributing agency again for Farmer's  
Market Benefits! Benefits are available  
after July 1.

For more information about the  
program and to inquire as to whether  
you are eligible, please call the Kenai  
Senior Center at (907) 283-8212.



## LET'S TALK RHUBARB



It's only a few short weeks  
before Kenai's July 4  
Celebration and the Kenai  
Senior Connection, Inc. will  
be there with its "Biscuits n'  
Gravy and Strawberry/  
Rhubarb Pie Booth!!!

If you have rhubarb and would like to  
donate it to the strawberry/rhubarb pie  
effort, please bring it to the Center  
anytime after June 20. Or, if you are  
unable to reap your rhubarb, call (907)  
283-4156 and make arrangements for  
someone to come gather it for you.

**Thank you for your generous  
support!!!**



## Father's Day Lunch

**Friday, June 13**

**11:30 a.m.**



This will be a special day with a salute to our  
fathers. Fathers will be going fishing for door  
prizes at lunch. Please join us to celebrate our  
fathers. Have a photo of your father you  
would like to share? Bring it along. We can  
all try to guess whose father is whose!  
Please sign up at the bulletin board.

## Calling all Mexican Dominoes Players!



Interested in playing or learning about Mexican dominoes? Please join us once a month on the first **Wednesday** of the month at 1:00pm in the card room. It's so much fun and see you there!

## Stronger Together Support Group



**Wednesdays 2 –3:30 pm**

Are you a caregiver who could use the support of others on a more regular basis? This may be for you!

## Card Making with Kim

Wednesday, June 11 at  
1:00pm Senior Center  
Dining Room



Please Sign up on the bulletin board.

## Nikiski Pool Transportation:

Starting Thursdays in February there will be transportation available for both AM and PM sessions at the Nikiski pool. The van will leave the center at 9:00am for the morning session and 1pm for the afternoon session. There is no transportation fee for this service but the individual is responsible for the \$2 admission fee to the pool.



## Kenai Peninsula

**Wednesday,**

**June 4 from 2:00p-3:30p**



The Kenai Peninsula Family Caregiver Support Program will meet at 2:00 pm on Wednesday, June 4 in the dining room at the Kenai Senior Center w/ the "Stronger Together" Group.

Anyone interested in learning more about the services we have to offer are more than welcome to attend. For more information, please contact Dani or Nicole at 907-776-7654.



## Day Trip "Drive to Homer"

**Thursday, June 26**

**10:00a-9:00pm**

Summer has finally arrived!!! We are going to drive to Homer. Enjoy lunch at one of their famous restaurants, tour the Homer Spit, and maybe a visit to Bear Creek Winery before going home. Transportation cost is \$15 per person. Please sign up at the receptionist desk.





# Anchorage Bowl Chamber Orchestra

*Kyle Lindsey, Music Director*

**11<sup>th</sup> Annual Kenai Peninsula Tour**  
**May 29<sup>th</sup>, 30<sup>th</sup>, 31<sup>st</sup>, & June 1<sup>st</sup>, 2025**  
**FREE AND OPEN TO THE PUBLIC**

Performing works by  
Bartók and Pachelbel,  
Nordic Folk Songs, and  
Video Game music!

**Cooper Landing 5/29 at 7:30pm**  
Gwin's Lodge Lower Pavilion

**Homer 5/30 at 6:30pm**  
Bear Creek Winery Botanical Garden

**Anchor Point 5/31 at 3:00pm**  
Norman Lowell Art Gallery

**Kenai 6/1 at 2:00pm**  
Kenai Senior Citizen's Center



Sign up for our Quarterly Update!

Sponsored  
in part by:





Join us for our Re-Grand Opening! We're excited to unveil our renovations, designed to bring our community together and introduce a new era of Memory Care. We've upgraded our community with enhanced amenities to better serve our residents.

Don't miss this special celebration!



4:00pm - 6:00pm | 701 N Forest Dr. Kenai, AK 99611

---

[www.aspencreekseniorliving.com](http://www.aspencreekseniorliving.com)

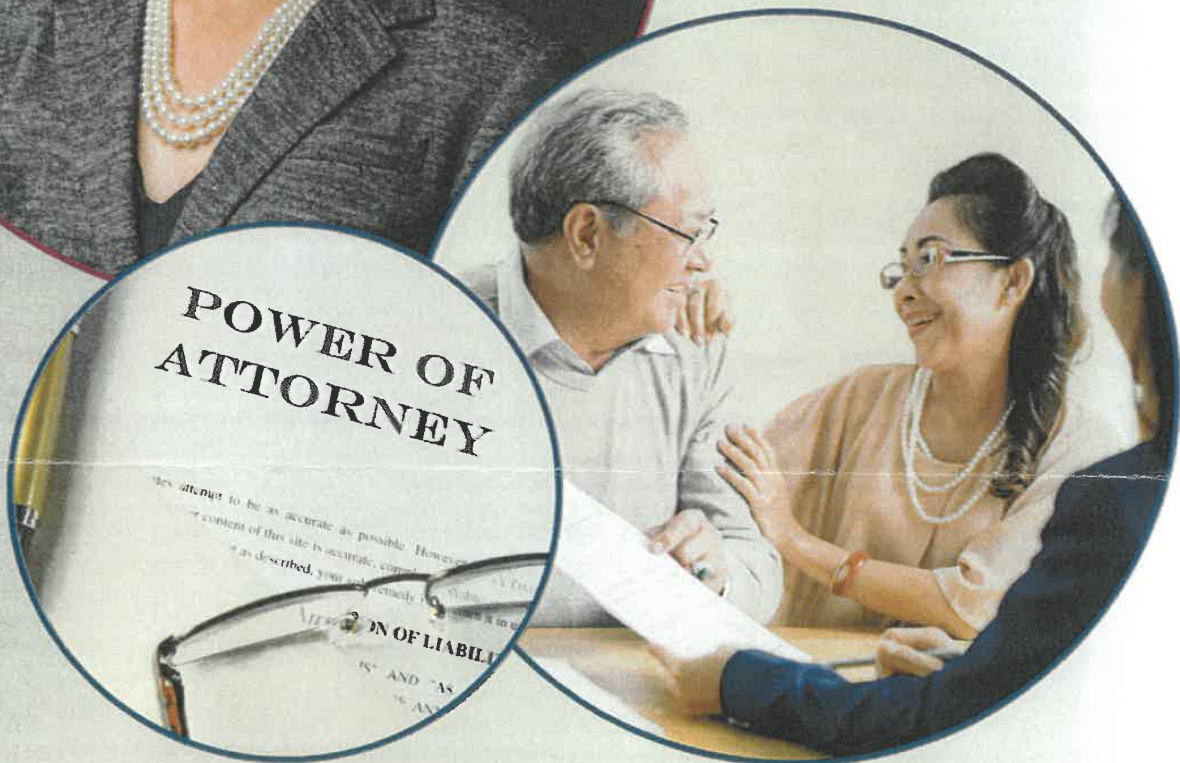


Join us for a free Legal Clinic via Zoom, streamed live at our center!



# Estate Planning with Alaskan Attorney Chelsea Riekkola

On Zoom  
June 12th  
12pm - 1:30pm



**<https://us02web.zoom.us/j/85495123702>**

Questions? Contact ACoA Staff Yasmin Radbod at 907-230-0871.

# 2025 Kenai Peninsula Air Fair

**Saturday June 7, Saturday June 14,**

**8-10 a.m.**

**12-3 p.m.**

**EAA Pancake Breakfast  
& Fly In**

**Kenai Peninsula Air Fair  
& Wheels/ Float Fly In**

Aircraft Displays  
Vendor/ Exhibitor Booths  
EAA Pancake Breakfast  
Kids Balsa Plane Fly Off

Aircraft Displays  
Vendor/ Exhibitor Booths  
Food Trucks  
Beer & Wine Garden by the Upper Deck  
Live Music by Ellie & the Echoes  
EAA Aircraft Show & Shine

@ Soldotna MARC Hangar  
595 Funny River Rd  
Soldotna, AK 99669

@Kenai Airport Operations Facility  
515 North Willow St  
Kenai, AK 99611



SOLDOTNA



Your LOCAL  
**CUSTOM APPAREL  
SHOP**  
on the Kenai Peninsula

HeatherAndHeather.net



[www.kenaiairport.com](http://www.kenaiairport.com)



**KENAI**  
CHAMBER OF COMMERCE & VISITOR CENTER



---

# Widows/Widowers



Meet Mondays at 2pm

Come share your grief with others

Kenai Senior Center Atrium

Its your story for you to share and we are here  
to support you



## LIBRARY NEWS

by Kari Mohn

Wondering about the criteria for adding items to our Kenai Senior Center Library? The books are basically nonfiction paperbacks. In each section, they are shelved by the author's last name. Except for Louis L'Amour, no more than three titles for each author. New additions are marked by colored post-its. June's post-it color is blue. As new titles are added, some of those that have been on the shelf longer than two months are removed.

In the DVD and Blu-ray collections, only those with just one title are added. The titles are for adults and are in alphabetical order. The Blu-rays are housed under the TV screen.

Puzzles are organized by number of pieces. Puzzles with known missing pieces are removed. Oversized puzzles are shelved together.

Those titles that don't mesh with the collection guidelines like hardbacks, TV series, self help books are placed on the give-away table in the Kenai Senior Center dining room. Some of the withdrawn paperbacks are used to stock the Little Library Take a Book Leave a Book kiosk in the Overlook Park next to the Kenai Senior Center.



(WAYNE BOETTCHER, Continued from page 1)

Determined, they embarked on a third mission—this time to Argentina, settling in a town 5,000 feet above sea level. The cooler climate suited Wayne much better, allowing him to contribute meaningfully by help build up churches and minister to the Argentines sharing Christ's love.

Construction work, however, comes with its dangers. Wayne lost the ring finger on his left hand while using an electric planer during a housing project. If you've spoken with him, you might have also noticed his slight tremor—a result of a devastating fall from a roof during a roofing job that caused severe brain trauma. Yet, despite the hardships he has faced, Wayne's positivity is unwavering. Simply being around him is a lesson in gratitude.

Wayne and Cindy share a full and joyful life, raising three children and celebrating twelve grandchildren. Wayne loves to read and treasures time spent with his family. And if there's one thing he's always enjoyed—it's fishing. Ice fishing, to be exact.



- Unless purchasing a large amount for transportation or lunch tickets, we cannot break a bill over \$20.
- You are welcome to take home leftovers from your meal, but please bring your own container.
- Coffee bar and bakery dollar donations are much appreciated. Thank you for your generosity. Items from the bread table are limited to just one per person daily.

**We appreciate your understanding.**

Looking for something fun to do?  
Enjoy hanging out with others?  
The Kenai Senior Center is the  
place for you!

- **First Thursday of the Month:** Movie Afternoon  
3 PM to 5PM



- **Thursday Fun Night:**  
happens every second, third,  
and fourth Thursday of the  
Month from **5 PM to 9 PM:**  
Join us for Bluegrass music,  
card games, cribbage, and  
more!

Beat the blues and make your  
Thursdays something to look  
forward to. We  
can't wait to see  
you there!



## Special Senior Walking Hours at the Kenai Rec Center

Looking for a safe, comfortable place to walk,  
rain or shine? Starting Tuesday, November 5,  
from **8-9 am**, the Rec Center is opening its doors  
on **Tuesdays** and **Thursdays** with dedicated  
walking hours just for seniors! The cost is \$2.50  
per day—includes access to the exercise  
machines, sauna, and showers after walking  
time! Enjoy a peaceful, climate-controlled space  
for walking, then stay to unwind and make the  
most of their other amenities. It's a great way to  
stay active, meet friends, and  
enjoy the whole Rec Center  
experience during these wintery  
days. No need to register—just  
drop in!



## Tell Us Your Story!

In February, legislators returned to Juneau to begin the  
next session. This was also when providers of senior  
services traveled to the capital to advocate for the  
funding that supports the meals, transportation, and  
activities you enjoy.



We need your help to ensure your voice is heard! Please write a letter or  
short note about how you've personally benefited from services like home-  
delivered or congregate meals, transportation, or the activities offered at  
the center.

Not much of a writer? No problem! Give us a call, and we'll gladly share  
your story on your behalf.

Your stories make a difference—they show lawmakers the impact of these  
services and why continued funding is essential. Thank you for sharing  
and helping us advocate for the programs you value!



## Correcting the Record About Social Security Direct Deposit and Telephone Services

Recent reports in the media that Social Security plans to eliminate telephone services are inaccurate. SSA is increasing its protection for America's seniors and other beneficiaries by eliminating the risk of fraud associated with changing bank account information by telephone.

SSA continuously investigates and analyzes potential threats to strengthen and secure our programs and protect people who receive benefits. Approximately 40 percent of Social Security direct deposit fraud is associated with someone calling SSA to change direct deposit bank information. SSA's current protocol of simply asking identifying questions by telephone is no longer enough to prevent fraud.

If someone needs to change their bank account information on SSA's record, they will need to either:

- Use two-factor authentication with SSA's "my Social Security" service; or
  - Visit a local Social Security office to prove their identity.
- These methods align with most major banks.

All other SSA telephone services remain unchanged.

## Social Security Strengthens Identity Proofing Requirements and Expedites Direct Deposit Changes to One Day

The Social Security Administration (SSA) is taking proactive steps to enhance the security of its services by implementing stronger identity verification procedures. The updated measures will further safeguard Social Security records and benefits against fraudulent activity. Over the next two weeks, SSA will carefully transition to stronger identity proofing procedures for both benefit claims and direct deposit changes. Individuals seeking these services who cannot use their personal my Social Security account, which requires online identity proofing, will then need to visit a local Social Security office to prove their identity in person. At the same time, the agency will expedite processing all direct deposit change requests – both in person and online – to one business day. Prior to this change, online direct deposit changes were held for 30 days.

The agency's two-week transition plan includes training frontline employees and management about the new policy and careful monitoring of policy compliance. At the conclusion of the transition period, on March 31, 2025, SSA will enforce online digital identity proofing and in-person identity proofing. SSA will permit individuals who do not or cannot use the agency's online my Social Security services to start their claim for benefits on the telephone. However, the claim cannot be completed until the individual's identity is verified in person. The agency therefore recommends calling to request an in-person appointment to begin and complete the claim in one interaction. Individuals with and without an appointment will need to prove identity before starting a transaction. Individuals who do not or cannot use the agency's online my Social Security services to change their direct deposit information, can visit a local office to process the change or can call 1-800-772-1213 to schedule an in-person appointment.

SSA recently required nearly all agency employees, including frontline employees in all offices throughout the country, to work in the office five days a week. This change ensures maximum staffing is available to support the stronger in-person identity proofing requirement.

People who do not already have a "my Social Security" account can create one at [www.ssa.gov/myaccount/](https://www.ssa.gov/myaccount/).

**Information taken from [blog.ssa.gov](https://blog.ssa.gov)**

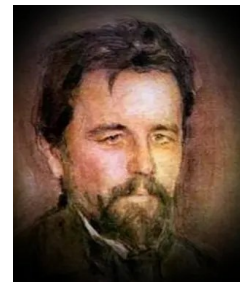
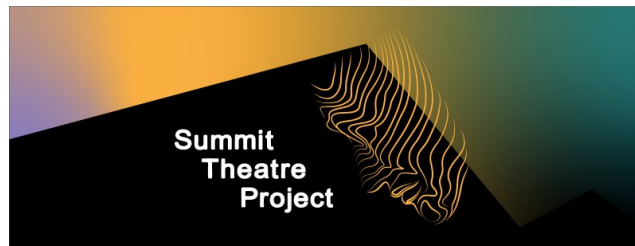


## Kenai Senior Connection, Inc. NEWS

Here it is, the end of May and the Kenai Senior Connection, Inc. Board is already planning to again operate its Fourth of July Pie Booth at the Green Strip Pavilion, like has been done for the last several years. Morning biscuits and gravy will be offered which have been very popular and which are normally sold out by one or two in the afternoon. A bowl of Biscuits and gravy with a cup of hot coffee or tea will get you on track for the rest of the day!

After the parade, come by and enjoy some of Missy's spectacular apple and/or strawberry/rhubarb pies! They will be available for sale — whole or by the slice (they just get better every year). The Country Store will be sharing space with the pie booth at the Pavilion and will have many of its homemade treasures for sale. Plus, quilt raffle tickets will also be available for sale. We'll be there, rain or shine...we hope you'll come by and enjoy!

In the meantime, enjoy June!



Anton Chekhov

"The Bear" & "A Marriage Proposal"  
Live shows by Summit Theatre Project  
Written by Anton Chekhov

Directed by Gavin Struempfer (Keith & Florence's grandson)

**Wednesday, June 25 at 11:00am**

Join us at the Kenai Senior Center to celebrate the inaugural season of Summit Theatre Project (STP), directed by Gavin Struempfer. STP is showcasing Alaskan acting talent along with collaboration with professional artists from outside our state to bring you the Comedic One-Acts "The Bear" and "A Marriage Proposal" by Anton Chekhov. Enjoy these short plays that pack big laughs, biting satire and unforgettable characters. Whether you're new to Chekhov or a lifelong fan, you'll be laughing out loud by the end.

When the show is over, STP actors will stick around for a while to visit & provide a small set of workshops and opportunities for those who enjoy flexing their thespian skills! We can offer some simple scene study, easy workshops, and much more! Let us know what your community would respond to in terms of small groups engagement.



**Our \$5-A-Month Club is a voluntary membership to the Kenai Senior Center through the Kenai Senior Connection, Inc. and a valuable help!**

All funds are used to assist with the Senior Center budget and for special needs throughout the year. We thank everyone for your support as we continue to grow and serve the needs of our senior community. Donations may be made on a monthly or year-to-year basis. **We proudly post our \$5 Club members in the Centerline!**

**JUNE 2025 \$5 CLUB**

Juanita Aguilar	Carol Freas	Chris Lombard	Trish Roderick
Ken Ayers	Velda Geller	Jennifer Lombard	Gayle Ross
Kris Ayers	Margaret Goggia	Carol Louthan	Richard Ross
Carol & Duane Bannock	Omer Goodman	Mike Louthan	Gladys Routh
Carol Barner	Bill Graves	Paula Maier	Julia Selanoff
Steve Best	Luna Graves	Marge Milewski	Marcia Shea
Sandy Bise	Jeffrey & Monica Griffin	James Miller	Lavona Smith
Larry & Tona Bravo	Darrell Hagen	Kari Mohn	Bill Starnes
Patricia Bravo	Lee & Phyllis Hallstead	Twyla Mundy	Sondra Starnes
Larry Burcham	June Harris	Wayne Mundy	Vivian Terry
Renee Clifford	Kathy Heus	Jerry Nassen	June Truelove
Jewell Coverstone	Bobbie Jedlicki	Bill Nelson	Terry Turner
Rachael Craig	Ginger Kaona	Lois Nelson	Ray Verg-in
Walt Craig	Fran Kilfoyle	Marian Nickelson	Yen-ti Verg-in
Terri Cramer	Sandy King	Ray Nickelson	Beverly & Don Waldrop
Elmer Curtis	Henry Knackstedt	Susan Olson	Frosty Walters
Deborah DeShong-Hayes	Mel Krogseng	Katie Pault	Virginia Walters
Dorothy Diamond	Anita Kwan	Bob Peters	Marie Weller
Pamela Downing	Gaye Larane	Robert Peterson	John White
Shirie Drath	William LaTocha	Judith Pock	Janice Wilsack
Barbara Durnil	Xiaopei LaTocha	Carol Prior	Clayton Yoncher
Robin Feltman	Hoa Le	Biz Robbins	
Sharon Fisher	Susan Lockwood	Geraldine Roberson	



## Summer Hiatus

### May, June and July

Tech Classes with Elizabeth of the Kenai Community Library are on hiatus for the months of May, June and July while the Summer Reading Program is in full swing. If you have tech questions Elizabeth has Tech Time on Tuesdays from 11:00am to 1:00pm at the Kenai Community Library. Please call 907-283-4378 to set up an appointment.



### Computer Lab Open Times

The Senior Center computer lab is open for your use on the following days/times:

**Monday—8-11 am & After 12:00 pm**

**Tuesday—After 11:30 am**

**\*Thursday—All Day**

**\*Friday—All Day**

\*There will be an occasional meeting in the Computer Lab where it will not be available to the general public.



### Waffle Bar Returns!

We will be offering waffles on **The Last Friday of the month** from 8-10:00 am. Come in for coffee, juice, and a hot waffle for just \$3. You may bring your own goodies to add to your waffle. No need to sign up. Just show up and enjoy this special treat.



# Kenai Senior Center 2025 Client Satisfaction Survey

Each year, the Kenai Senior Center (KSC) gathers input to improve services and meet funding requirements. Your responses help shape the Center's future programs. Please answer all questions to ensure accurate analysis. All responses are confidential.

**What is your age or year you were born in:** \_\_\_\_\_

## **Programs & Participation**

### **1. Which KSC programs/activities have you participated in this year?**

*(Check all that apply)*

- ☐ Arts & Crafts
- ☐ Classes/Workshops
- ☐ Health & Fitness
- ☐ Congregate Meals
- ☐ Special Events & Entertainment
- ☐ Home-Delivered Meals
- ☐ Trips/Excursions
- ☐ Volunteer Opportunities
- ☐ Transportation Services
- ☐ Medicare Counseling
- ☐ Information & Assistance

### **2. Are you a registered member of the Kenai Senior Center?**

- ☐ Yes
- ☐ No

### **3. Are you aware of all the programs and services KSC offers?**

- ☐ Yes
- ☐ No

### **4. Are you interested in volunteering?**

- ☐ Yes
- ☐ No
- ☐ I am already a volunteer

## **Meals & Nutrition Services**

### **5. How often do you eat lunch at KSC?**

- ☐ 4+ times per week
- ☐ 1-3 times per week
- ☐ Occasionally
- ☐ N/A

**6. How often do you receive Home-Delivered Meals?**

- ☐ 4+ times per week
- ☐ 1-3 times per week
- ☐ Occasionally
- ☐ N/A

**7. How would you rate the quality of meals you receive?**

- ☐ Excellent
- ☐ Good
- ☐ Fair
- ☐ Poor

**8. What is your favorite meal served at KSC? \_\_\_\_\_**

**Transportation Services**

**9. Do you use KSC Transportation Services? If so, how often?**

- ☐ 4+ times per week
- ☐ 1-3 times per week
- ☐ Occasionally
- ☐ Never

**10. Do you use transportation to access the community?**

- ☐ Yes
- ☐ No

**11. Do you use transportation to access the senior center?**

- ☐ Yes
- ☐ No

**Safety & Overall Experience**

**12. Do you feel KSC staff prioritize your safety?**

- ☐ All of the time
- ☐ Most of the time
- ☐ Some of the time
- ☐ None of the time

## Kenai Senior Center 2025 Client Satisfaction Survey

**13. Do KSC services help maintain or improve your quality of life and ability to age in place?**

- ☐ All of the time
- ☐ Most of the time
- ☐ Some of the time
- ☐ None of the time

**14. How would you rate your overall experience with KSC services?**

- ☐ Excellent
- ☐ Good
- ☐ Fair
- ☐ Poor

### **Suggestions & Feedback**

**14. What activities do you enjoy most at KSC?**

---

---

**15. What new activities or programs would you like to see offered?**

---

---

**16. Do you have any cost-saving ideas for KSC?**

---

---

---

**17: Comments:**

---

---

---

**Please return survey to the KSC by June 15, 2025.**







FOR OFFICIAL USE ONLY—DO NOT WRITE IN THIS BOX

Date Received \_\_\_\_\_ Received by \_\_\_\_\_

With the recent closures due to the COVID-19 virus, it has become apparent that we are missing or have outdated information on many of our patrons. Please help us to update our database by filling out this form and giving it to the receptionist, or mailing it to:

**Kenai Senior Center, 361 Senior Ct., Kenai, AK 99611**

~Thank you for your help!

Name \_\_\_\_\_  
First Middle Last

Mailing Address \_\_\_\_\_

City \_\_\_\_\_ State \_\_\_\_\_ Zip \_\_\_\_\_

Physical Address \_\_\_\_\_

City \_\_\_\_\_ State \_\_\_\_\_ Zip \_\_\_\_\_

Date of Birth \_\_\_\_\_ Home Phone \_\_\_\_\_ Cell Phone \_\_\_\_\_

## Kenai Senior Center Donation Form

### *Helping People Age With Dignity*

Your tax deductible donations are a valuable and necessary means for the sustainability of Kenai Senior Center services. If you would like to make a meaningful donation to help those in need, please make a selection from the following services:

#### **Please make checks to Kenai Senior Center:**

- ☐ Congregate Meal Program
- ☐ Transportation Services
- ☐ Home Delivered Meal Program
- ☐ Newsletter Mailing (\$10, Jan—Dec)
- ☐ Newsletter E-Mailing (Free of charge)
- ☐ Senior Activities (line dancing, exercise, road trips, etc.)

Email Address: \_\_\_\_\_

#### **Please make checks to Kenai Senior Connection**

- ☐ \$5 Club
  - ☐ monthly - \$5
  - ☐ yearly - \$60
- ☐ Memorial Donation
- ☐ Kenai Senior Endowment Fund

Name \_\_\_\_\_ Address \_\_\_\_\_

Mail to: Kenai Senior Center, 361 Senior Court, Kenai, AK 99611.

Thank you for your financial support! Every *little* bit can make a **BIG** difference.



Heart Healthy

# JUNE 2025 MENU

If you would like to order a meal for pick-up, please call 283-4156 by 10:30am for same-day pick up.

*\*Menu is subject to change\**  
*\*Soup and Salad when available\**

Monday	Tuesday	Wednesday	Thursday	Friday
2 Baked Potato With Fixings Broccoli Soup	3 Lemon Herb Mediterranean Chicken Salad Fruit Cup 	4 Pan-Seared Cod in Tomato/Basil Sauce Brown Rice Yellow Squash Salad	5 White Sauce Turkey Enchiladas Mexi-Corn Spanish Rice Soup	6 Hot Ham, Cheese & Egg Croissant Roasted Potatoes Cherry Tomato Salad
9 Italian Sausage w/ Peppers & Marinara Sauce Bowtie Pasta Garlic Bread Soup	10 Thai Chicken Salad w/Peanut Dressing Fruit Cup Muffin 	11 Sweet & Sour Pork Stir-Fry Veggies Jasmine Rice Egg Roll Salad	12 BBQ Chicken Legs Mac & Cheese Peas & Corn Soup	13 BBQ Ribs Cowboy Beans Cornbread Carrot Cake
16 Turkey Sandwich Fruit Cup Cottage Cheese Soup	17 Taco Salad w/all the fixings	18 Roast Turkey Mashed Potatoes Gravy, Stuffing Green Beans Salad Birthday Cake	19 Fried Chicken Mashed Potatoes Gravy Mixed Veggies Soup	20 Cheeseburger Onion Rings Potato Salad
23 Ham & Beans Hawaiian Pasta Salad Fruit Cup Cornbread Soup	24 Blueberry Pecan Chicken Salad w/ Blueberry Vinaigrette Muffin 	25 Honey-Garlic Pork Tenderloin Mixed Veggies Salad	26 Baked Ham Cheesey Potatoes Baked Cabbage Soup	27 Cod Burger French Fries Coleslaw
30 Veggie Soup Tuna-on-Rye Fresh Fruit	1 Raspberry Chipotle Chicken Salad Fruit Cup Muffin 	2 Beef Stew Peaches & Cottage Cheese Pasta Salad Rustic Rolls	3 Clam Chowder Seafood Pasta Salad Fruit Cup Muffin	4  <b>4TH OF JULY CENTER CLOSED</b>

**Center Funders & Supporters**

City of Kenai

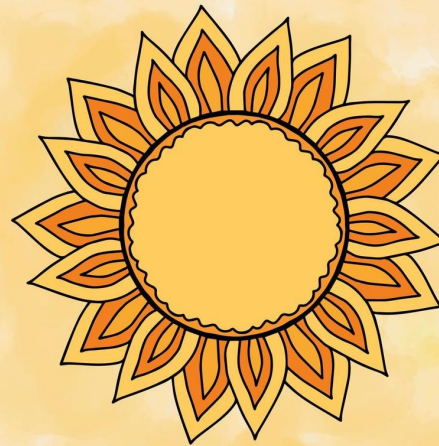
Alaska Commission on Aging

Kenai Peninsula Borough

Center Volunteers

Kenai Senior Connection, Inc.

Private Donations



summer solstice

Find us on  
Facebook



<https://www.facebook.com/kenaisenior/>

E-mail: [senior@kenai.city](mailto:senior@kenai.city)

Fax: 907-283-3200

Phone: 907-283-4156

Kenai, Alaska 99611

361 Senior Court

Kenai Senior Center

**City of Kenai**  
**Kenai Senior Center**

PLEASE  
PLACE  
STAMP  
HERE