

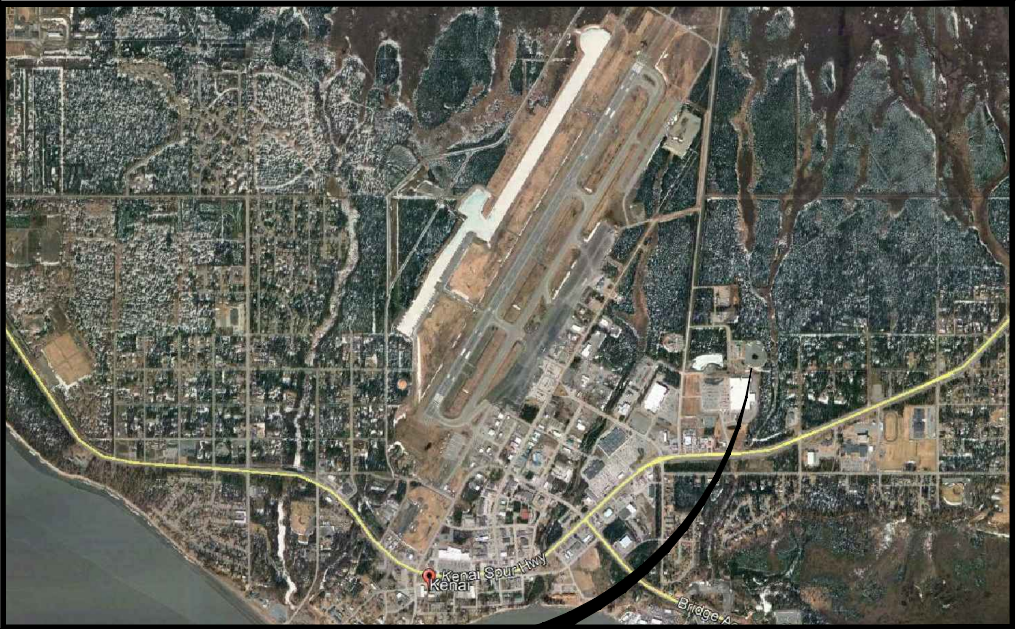
DRAWINGS FOR
ALASKA REGIONAL FIRE TRAINING
CENTER
TRAINING EQUIPMENT REHABILITATION

KENAI, ALASKA

PREPARED BY:
 **Morrison
Maierle**
engineers ■ surveyors ■ planners ■ scientists


1 Engineering Place, Helena, MT 59602
406.442.3050 www.m-m.net

SHEET INDEX		
SH. NO.	DWG. NO.	
COVER AND SHEET INDEX		
1	G-1	TRAINING EQUIPMENT - SCHEDULES
2	9733-06	PROPANE GAS FACILITY - FLOW DIAGRAM
3	9733-11	PROPANE AIR GAS FACILITY - TANK TRIM
4	9733-14	PROPANE SUPPLY FACILITY - STANDARD PIPING SPECS.
5	1-4	ELECTRICAL DIAGRAM
6	1-5	COOLING WATER & PROPANE ISOLATION PIT DETAILS
7	2-1	SPILL FIRE TRAINER CONCRETE LAYOUT & JOINT DETAILS
8	2-2	TRAINING SITE MANHOLE DETAILS
9	2-3	FACILITY INTERFACE BURNER CONTROL BUNKER
10	2-4	CONTROL BUNKER
11	SC-1	SPILL FIRE TRAINER BURN PIT PLAN
12	SC-2	SPILL FIRE TRAINER BURN PIT SECTION
13	SG-1	SPILL FIRE TRAINER GRATING SUPPORT PLAN
14	SG-2	SPILL FIRE TRAINER GRATING SUPPORT DETAILS
15	SG-3	SPILL FIR TRAINER GRATING SUPPORT DETAILS
16	SG-4	SPILL FIRE TRAINER GRATING SUPPORT DETAILS
17	SG-5	SPILL FIRE TRAINER GRATING SUPPORT DETAILS
18	SG-6	SPILL FIRE TRAINER GRATING SUPPORT DETAILS
19	SG-7	FIRE PIT GRATING PLAN
20	M-1	SPILL FIRE TRAINER PROPANE PIPING CIRCUITING
21	M-3	SPILL FIRE TRAINER DRAINAGE PIPING PLAN
22	E-1	SPILL FIRE TRAINER CONDUIT ROUTING & FIRE ZONE PLAN



PROJECT LOCATION

VICINITY MAP
NOT TO SCALE

 engineers ■ surveyors ■ planners ■ scientists	
QUALITY ASSURANCE	
PROJECT MANAGER	Q.A. APPROVAL DATE
OFFICE QUALITY ASSURANCE COORDINATOR	Q.A. PROJECT NUMBER
PEER REVIEWER	

SET NO. _____
MORRISON-MAIERLE PROJECT NO. _____



PROJECT LOCATION

LOCATION MAP
NOT TO SCALE

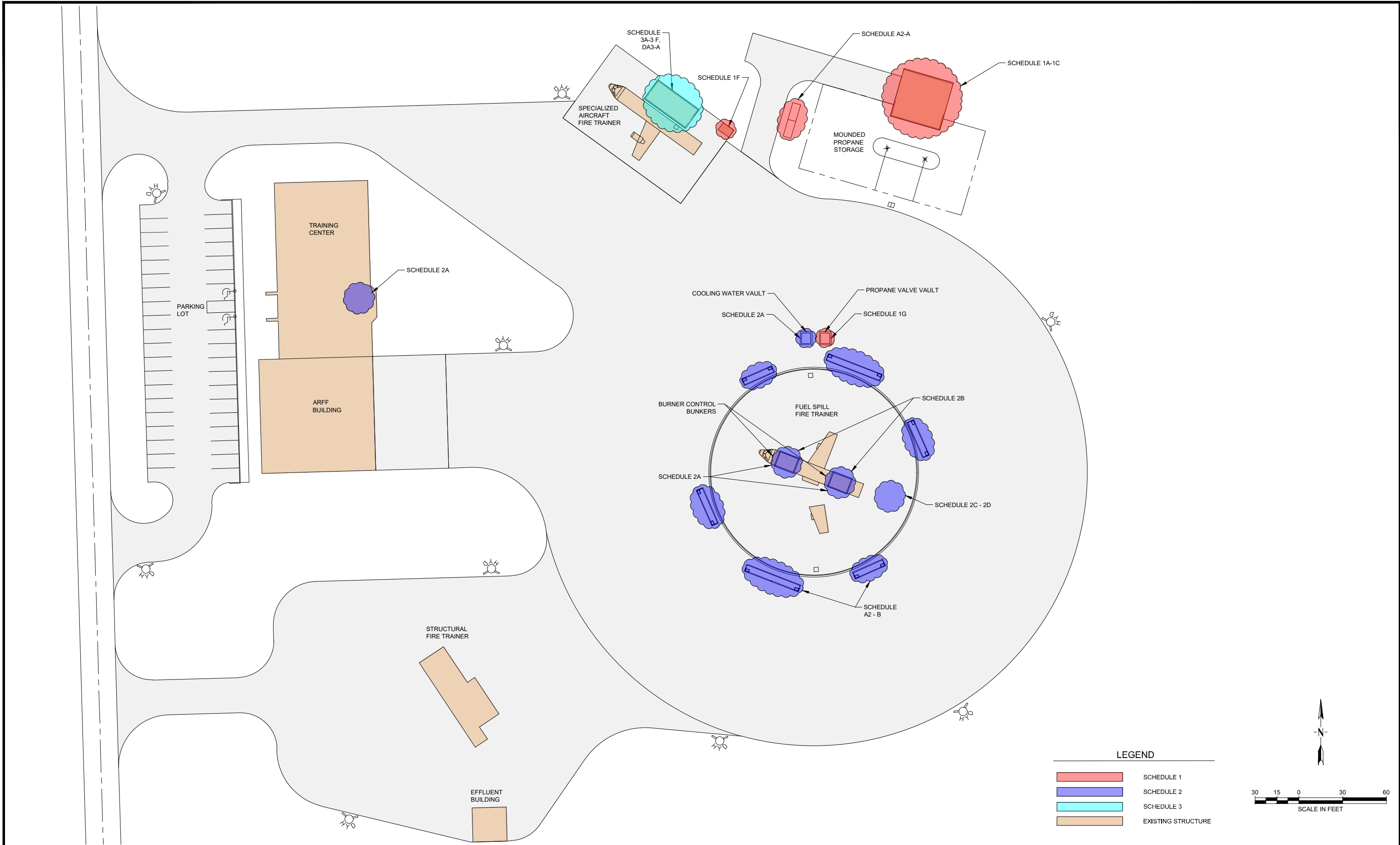


© This document was prepared by Morrison-Maierle, Inc. and may contain confidential or privileged information. Morrison-Maierle, Inc. retains all common law, statutory, and reserved rights including the copyright thereto. Unauthorized use of this document or changes are strictly prohibited and may be unlawful.

VERIFY COLOR!
THIS SHEET IS INTENDED TO
BE IN COLOR. RED, GREEN
AND BLUE WILL BE VISIBLE IF
REPRODUCED CORRECTLY.



APPROVED BY: _____
PROJECT MANAGER NAME
Project Manager



REVISIONS			
NO.	DESCRIPTION	BY	DATE

VERIFY SCALE!

THESE PRINTS MAY BE REDUCED.
LINE BELOW MEASURES ONE INCH
ON ORIGINAL DRAWING.

MODIFY SCALE ACCORDINGLY!

engineers • surveyors • planners • scientists

1 Engineering Place
Helena, MT 59602
406.442.3050
www.m-m.net

COPYRIGHT © MORRISON-MAIERLE, INC., 2019

DRAWN BY: BJD
DSGN. BY: TFO
APPR. BY: TFO
DATE: 07/2019
Q.C. REVIEW
BY: _____
DATE: _____

KENAI

ALASKA

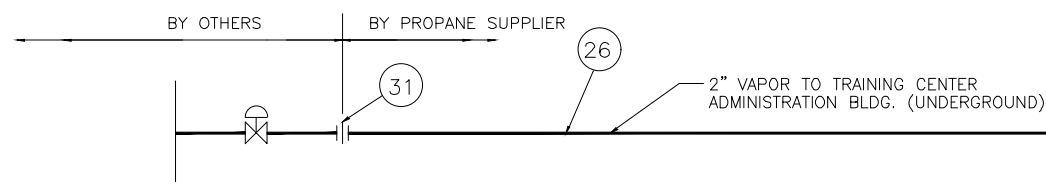
ALASKA REGIONAL FIRE TRAINING CENTER
TRAINING EQUIPMENT REHABILITATION

TRAINING EQUIPMENT - SCHEDULES

PROJECT NUMBER
2950/042

SHEET NUMBER
2

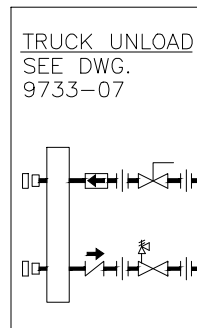
DRAWING NUMBER
G-1



REFER TO SECTION 1.6
MEASUREMENT AND PAYMENT

THIS DRAWING FOR
REFERENCE ONLY

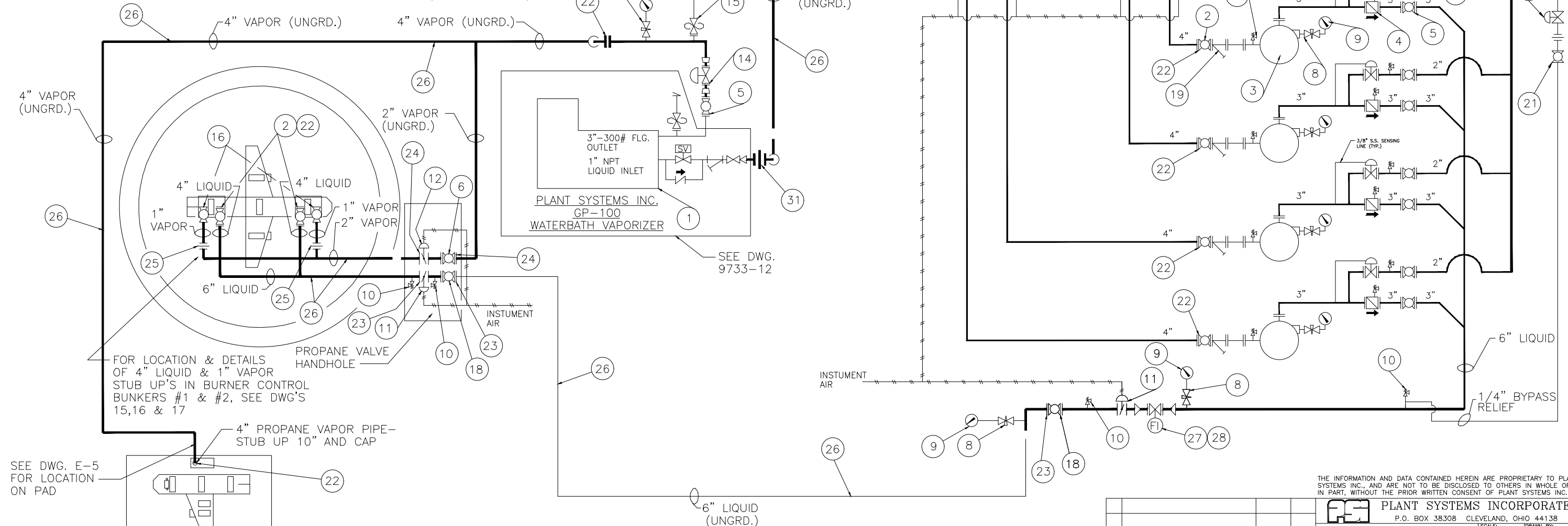
BILL of MATERIAL				
ITEM	QTY	MANUFACTURER: *	MODEL No.:	DESCRIPTION:
1.	1	PLANT SYSTEMS	GP-100	WATERBATH VAPORIZER, 1100 GPH CAPACITY
2.	6	NIBCO	F535	4"-300# FLANGED FULL PORT BALL VALVE
3.	4	CORKEN	F1521F-101GR	4" PUMP, 650 RPM W/20 H.P. MOTOR GEAR REDUCTION
4.	4	CORKEN	FC300	3" FLOW INDICATING BACK CHECK VALVE
5.	5	NIBCO	F530	3"-300# FLANGED BALL VALVE
6.	5	NIBCO	F530	2"-300# FLANGED BALL VALVE
7.	4	MOONEY	"FLOWGRID"	2"-300# FLG. BACK PRESSURE RELIEF VALVE, W/100% CAPACITY THROTTLE PLATE, 60-200# SPRING - SET @ 120 PSIG, SET UP FOR LIQUID PROPANE
8.	8	BERGQUIST	No. 217	1/4" MNPT X 1/4" FNPT NEEDLE VALVE
9.	8	NOSHOK	25.300	0-300# LIQUID FILLED PRESSURE GAUGE
10.	17	FISHER	H124	1/4" HYDROSTATIC RELIEF VALVE
11.	2	CONTROL ASSOC.	2C1-003-537	6" LIQ. VALVE W/ACTUATOR, LIMITSWITCH, SOLENOID-FLANGED WAFER STYLE
12.	1	CONTROL ASSOC.	2C1-003-540	2" VAPOR VALVE W/ACTUATOR, LIMITSWITCH, SOLENOID-FLANGED WAFER STYLE
13.	4	LEXAIR	M3820623	1/4" - 3 WAY PNEUMATIC CONTROL VALVE
14.	1	FISHER	1098EG2	2"-300# FLG. PRESSURE REGULATOR W/ 3-40 PSIG PILOT
15.	1	FISHER	1805-52	2" SCREWED PRESSURE RELIEF VALVE
16.	2	APOLLO	83-105-01	1" FULL PORT BALL VALVE SCREWED
17.	1	MERCURY	P770-2-3/8	2" NPT RAIN CAP
18.	2	NIBCO	F535	6"-300# FLANGED FULL PORT BALL VALVE
19.	4	MUESSCO	762	4"-300# FLANGED CAST-STEEL "Y" STRAINER W/40 MESH SCREEN
20.	1	FISHER	98H	1/4" SCR.D. BACK PRESSURE RELIEF VALVE 130-200# SPRING
21.	2	APOLLO	73-101	1/4" SCR.D. BALL VALVE
22.	9	CENTRAL	TYPE "E"	4"-300# INSULATING FLANGE KIT
23.	3	CENTRAL	TYPE "E"	6"-300# INSULATING FLANGE KIT
24.	2	CENTRAL	TYPE "E"	2"-300# INSULATING FLANGE KIT
25.	2	CENTRAL	108-010110-000	1"-3000# INSULATING UNION
26.	12	BERGQUIST	177	MAGNESIUM ANODE BAG
27.	1	BROOKS	T048M1C22B4BB	4"-300# TURBINE FLOWMETER
28.	1	BROOKS	1P-10 #0300 ADELASH	ELECTRONIC REGISTER W/PULSE OUTPUT
29.	1	FISHER	N301-08	1" SCREWED GLOBE VALVE
30.	1	FISHER	627	1" SCREWED PRESSURE REGULATOR W/5-35 PSIG SPRING
31.	5	CENTRAL	108-020210-000	2"-3000# INSULATING UNION
32.	1	CENTRAL	108-121210-000	1-1/4" - 3000# INSULATING UNION



SEE TANK TRIM
DWG. 9733-11

NOTES:

1. SYMTRON SYSTEMS INC. 1701 POLLITT DRIVE, FAIR LAWN, NJ (201-794-0200)

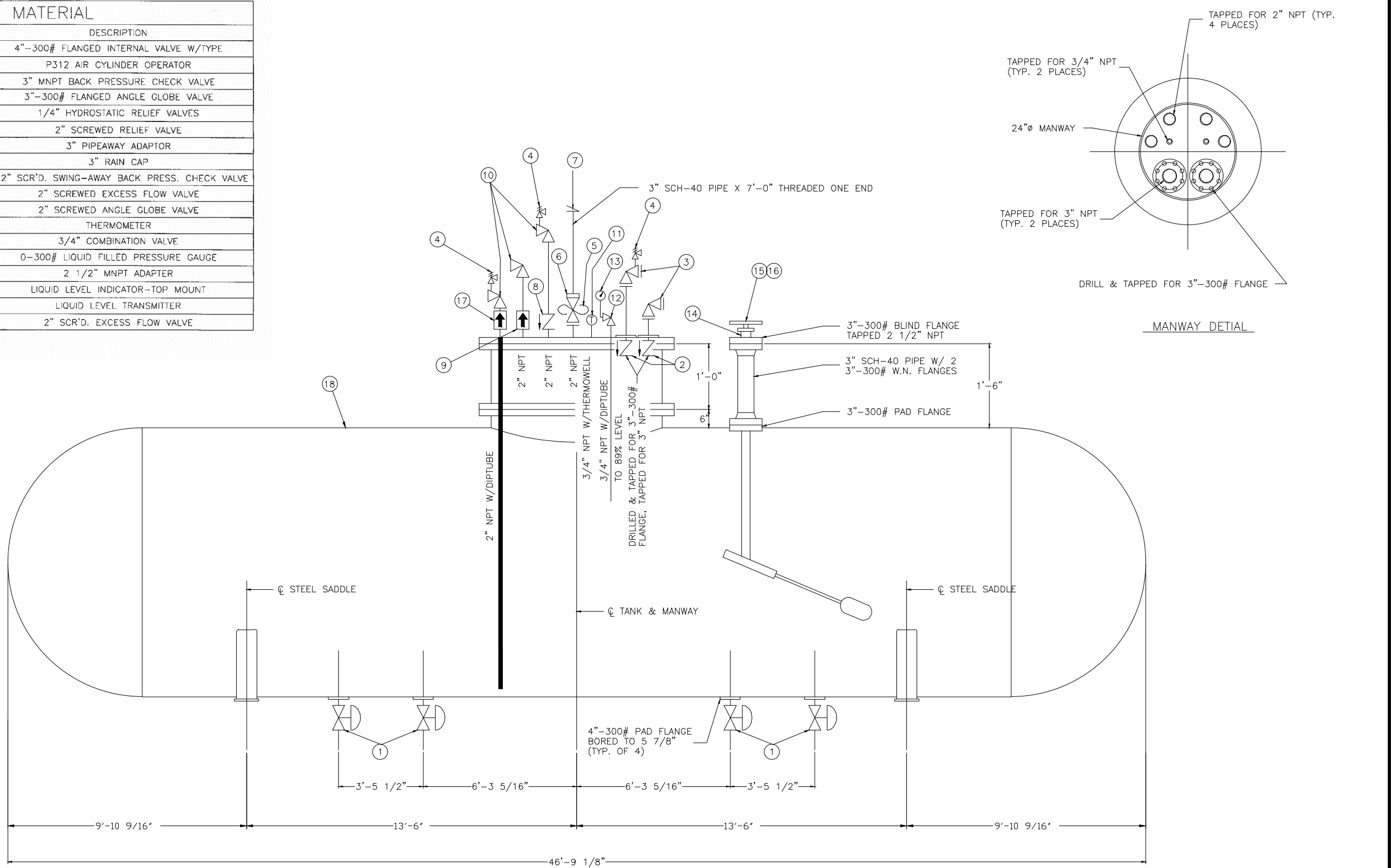


THE INFORMATION AND DATA CONTAINED HEREIN ARE PROPRIETARY TO PLANT SYSTEMS INC., AND ARE NOT TO BE DISCLOSED TO OTHERS IN WHOLE OR IN PART, WITHOUT THE PRIOR WRITTEN CONSENT OF PLANT SYSTEMS INC.

PLANT SYSTEMS INCORPORATED	
P.O. BOX 38308 CLEVELAND, OHIO 44138	
ALASKA REGIONAL FIRE TRAINING CENTER KENAI, ALASKA	DRAWN BY: SAM APPROVED BY:
PROpane GAS FACILITY SCHEMATIC FLOW DIAGRAM	
DATE: 2-27-97	DRAWING NUMBER: 9733-06

BILL of MATERIAL				
ITEM	QTY.	MANUFACTURE *	MODEL #	DESCRIPTION
1	4	FISHER	C404-A32-600	4"-300# FLANGED INTERNAL VALVE W/TYPE
				P312 AIR CYLINDER OPERATOR
2	2	REGO	A3400L6	3" MNPT BACK PRESSURE CHECK VALVE
3	2	REGO	A7518FP	3"-300# FLANGED ANGLE GLOBE VALVE
4	3	FISHER	H124	1/4" HYDROSTATIC RELIEF VALVES
5	1	REGO	7534G	2" SCREWED RELIEF VALVE
6	1	REGO	7534-20	3" PIPEAWAY ADAPTOR
7	1	MERCURY	P770-3 1/2	3" RAIN CAP
8	1	REGO	A6586C	2" SCR'D. SWING-AWAY BACK PRESS. CHECK VALVE
9	1	REGO	A7537P4	2" SCREWED EXCESS FLOW VALVE
10	3	REGO	A7514AP	2" SCREWED ANGLE GLOBE VALVE
11	1	FISHER	J701	THERMOMETER
12	1	REGO	2805C	3/4" COMBINATION VALVE
13	1	NOSHOK	25-300	0-300# LIQUID FILLED PRESSURE GAUGE
14	1	MAGNETEL	22-29	2 1/2" MNPT ADAPTER
15	1	MAGNETEL	P6336-11	LIQUID LEVEL INDICATOR-TOP MOUNT
16	1	MAGNETEL	R6315-12	LIQUID LEVEL TRANSMITTER
17	1	REGO	A2137A	2" SCR'D. EXCESS FLOW VALVE

* OR EQUAL




130" I.D. X 46'-9 1/8" O.A.L.
30,000 GAL. PROPANE STORAGE TANK

REFER TO SECTION 1.6
MEASUREMENT AND PAYMENT

THIS DRAWING FOR
REFERENCE ONLY

THE INFORMATION AND DATA CONTAINED HEREIN ARE PROPRIETARY TO PLANT SYSTEMS INC., AND ARE NOT TO BE DISCLOSED TO OTHERS IN WHOLE OR IN PART, WITHOUT THE PRIOR WRITTEN CONSENT OF PLANT SYSTEMS INC.

**PLANT SYSTEMS INCORPORATED**
P.O. BOX 38308 CLEVELAND, OHIO 44138

ALASKA REGIONAL FIRE TRAINING CENTER
KENAI, ALASKA

SCALE: NONE
DRAWN BY: SAM
APPROVED BY:

PROPANE-AIR GASS FACILITY
TANK TRIM

DATE: 2-27-97
DRAWING NUMBER: 9733-11

PIPING SPECIFICATIONS

SECTION I: PIPE AND FITTINGS

1. ALL ABOVE GROUND PIPING 2" & SMALLER SUBJECT TO TANK PRESSURE TO BE SCHEDULE 80 ERW OR SEAMLESS STEEL SCREWED PIPE, ASTM A53, GRADE B OR EQUAL, WITH MINIMUM 2000# FORGED STEEL SCREWED FITTINGS.
2. ABOVE GROUND WELDED PIPING TO BE SCHEDULE 80 ERW OR SEAMLESS STEEL PIPE, ASTM A53, GRADE B, WITH SCH. 80 (EXTRA STRONG) WELD FITTINGS.
3.

A) ALL UNDERGROUND VAPOR PIPING TO BE SCHEDULE 40 ERW OR SEAMLESS STEEL PIPE, ASTM A53, GRADE B OR EQUAL, FACTORY COATED AND WRAPPED. ALL UNDERGROUND JOINTS AND FITTINGS TO BE SCH. 40 (STD. WT.) WELDED.


B) ALL UNDERGROUND LIQUID PIPING TO BE SCHEDULE 80 ERW OR SEAMLESS STEEL PIPE, ASTM A53, GRADE B OR EQUAL, FACTORY COATED AND WRAPPED. ALL UNDERGROUND JOINTS AND FITTINGS TO BE SCH. 80 (EXTRA STRONG) WELDED.
4. WELDED JOINTS ON UNDERGROUND PIPE LINES SHALL BE COATED AND WRAPPED A MINIMUM OF 6 INCHES OVER THE FACTORY COATING IN BOTH DIRECTIONS WITH MATERIALS EQUAL TO AND COMPATIBLE WITH THE FACTORY COATING.
5. UNDERGROUND PIPING SHALL BE BURIED A MINIMUM OF 48 INCHES BELOW FINISHED GRADE.
6. UNDERGROUND LINES SHALL BE WEATHER SEALED TO ONE FOOT ABOVE GRADE AND SEPARATE FROM ALL ABOVE GRADE PIPING BY INSULATING FLANGES OR UNIONS.
7. GASKETS FOR FLANGED JOINTS SHALL BE "FLEXITELIC" SERIES CG, OR EQUAL. ALL SEALING COMPOUND USED FOR THREADED JOINTS SHALL BE APPROVED FOR LP-GAS SERVICE.
8. BEFORE FINAL TESTING, ALL PIPING TO BE CLEANED BY THE USE OF PIPE "PIGS" OR EQUIVALENT.
9. CONTRACTOR TO PRESSURE TEST ALL PIPING WITH DRY COMPRESSED AIR OR NITROGEN AS REQUIRED BY DESIGN, AT A MINIMUM OF 100 PSI OR 1-1/2 TIMES WORKING PRESSURE, WHICH EVER IS GREATER. THE TESTS SHALL BE CONDUCTED, WITNESSED AND CERTIFIED BY AN INDEPENDENT TESTING FIRM.
10. CONTRACTOR TO PROVIDE ALL GLYCOL ANTIFREEZE REQUIRED FOR SYSTEM.

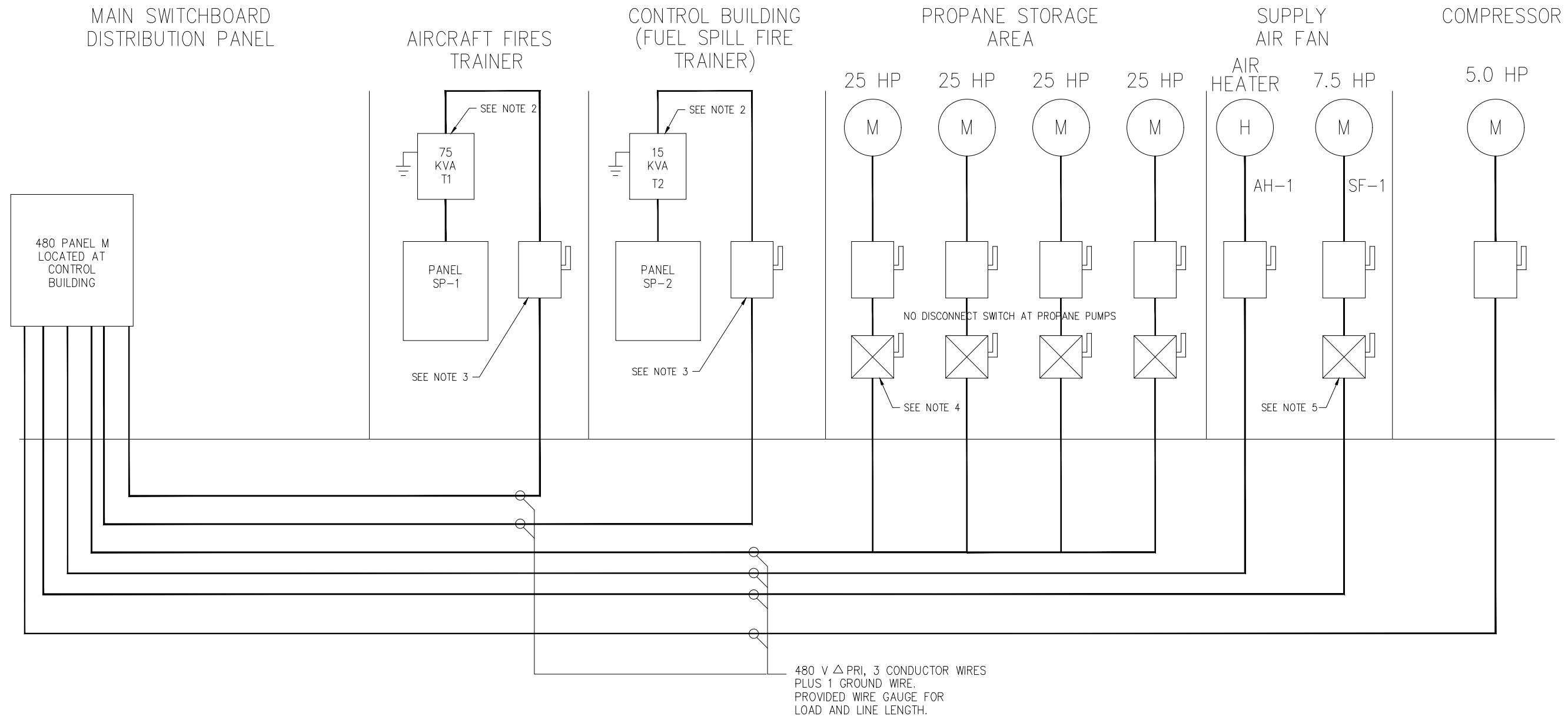
SECTION II: VALVES

1. ALL VALVES AND SPECIALS FOR PROPANE LIQUID OR VAPOR LINES SHALL BE MANUFACTURED WITH BODY, TRIM, SEAT, AND SEAL MATERIALS SUITABLE FOR LP-GAS SERVICE, AND BE RATED FOR 350 PSIG OPERATING SERVICE.

THIS DRAWING FOR
REFERENCE ONLY

THE INFORMATION AND DATA CONTAINED HEREIN ARE PROPRIETARY TO PLANT SYSTEMS INC., AND ARE NOT TO BE DISCLOSED TO OTHERS IN WHOLE OR IN PART, WITHOUT THE PRIOR WRITTEN CONSENT OF PLANT SYSTEMS INC.

				 PLANT SYSTEMS INCORPORATED			
				P.O. BOX 38308 CLEVELAND, OHIO 44138			
				ALASKA REGIONAL FIRE TRAINING CENTER		SCALE:	DRAWN BY:
				KENAI, ALASKA		NONE	SAM
				PROPANE SUPPLY SYSTEM			
				STANDARD PIPING SPECIFICATIONS			
				DRAWING NUMBER:			
NO.	REVISION		DATE:	BY:	2-27-97		9733-14



NOTES:

1. POWER REQUIREMENTS PROVIDED FOR TRAINER DEVICE ONLY. LIGHTING, HVAC, ETC., FOR CONTROL BUILDING AND POWER FOR PROPANE PUMPS AND VENTILATION SHOWN FOR REFERENCE ONLY.
2. DRY-TYPE, FILTERED, SHIELDED, ISOLATION TRANSFORMER,
3. NEMA 3R DISCONNECT SWITCH – SIZE FOR SELECTED EQUIPMENT
4. USE AB STARTER P/N 513CHB44–6P–3 WITH W66 OVERLOAD RELAY HEATER ELEMENT. UNIT HAS A 120V CONTROL TRANSFORMER AND A REMOTE HOA SWITCH.–TYPICAL OF 4. ALL RATED NEMA 7”.
5. USE AB STARTER P/N 513HB40–6P–3 WITH W54 OVERLOAD RELAY HEATER ELEMENT. UNIT HAS A 120V CONTROL TRANSFORMER AND A LOCAL HOA SWITCH. ALL RATED NEMA 7”.

POWER RISER DIAGRAM–TRAINER DEVICES ONLY
(SEE NOTE 1)

REFER TO SECTION 1.6
MEASUREMENT AND PAYMENT

THIS DRAWING FOR
REFERENCE ONLY

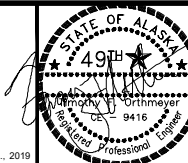
NO.	DESCRIPTION	REVISIONS		BY	DATE

VERIFY SCALE!
THESE PRINTS MAY BE REDUCED.
LINE BELOW MEASURES ONE INCH
ON ORIGINAL DRAWING.
MODIFY SCALE ACCORDINGLY!



1 Engineering Place
Helena, MT 59602
406.442.3050
www.m-m.net

COPYRIGHT © MORRISON-MAIERLE, INC., 2019



DRAWN BY: BJD
DSGN. BY: TFO
APPR. BY: TFO
DATE: 07/2019
Q.C. REVIEW
BY: _____
DATE: _____

KENAI

ALASKA REGIONAL FIRE TRAINING CENTER
TRAINING EQUIPMENT REHABILITATION

ALASKA

ELECTRICAL DIAGRAM

PROJECT NUMBER

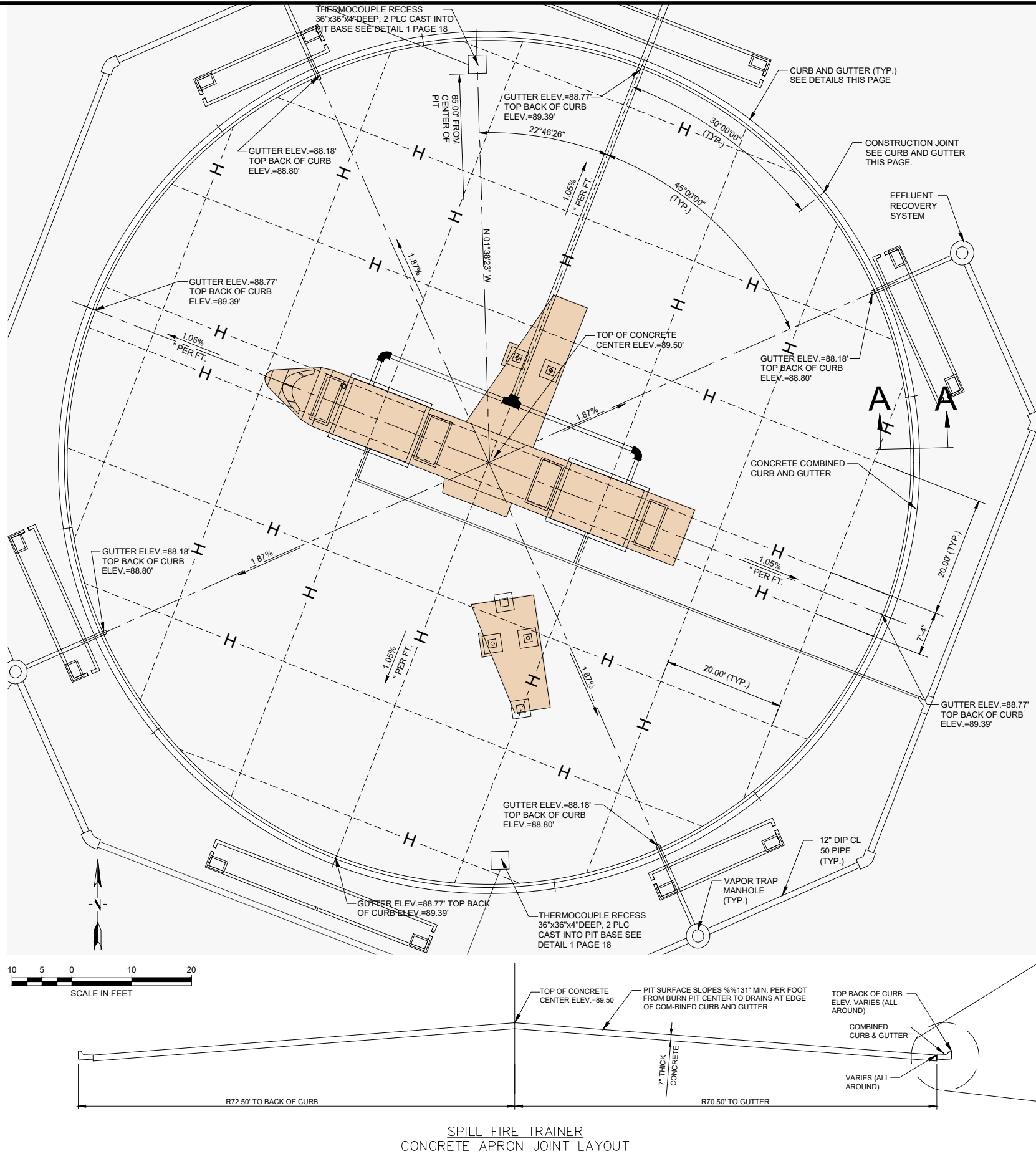
2950/042

SHEET NUMBER

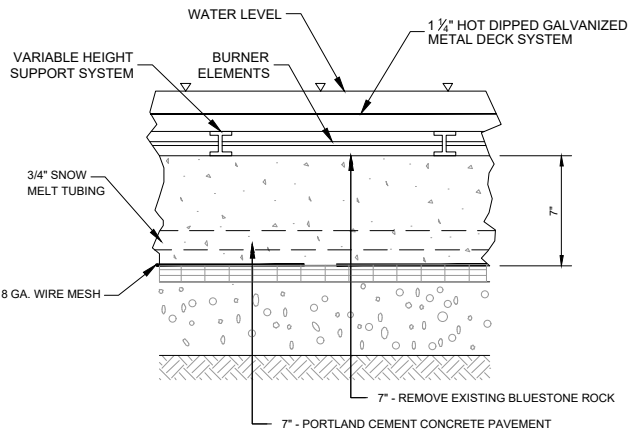
5

DRAWING NUMBER

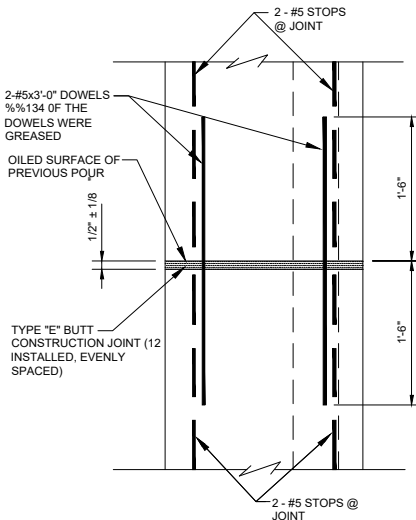
1-4



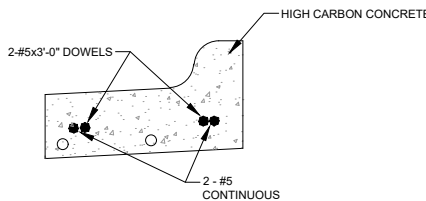
SPILL FIRE TRAINER
CONCRETE APRON JOINT LAYOUT



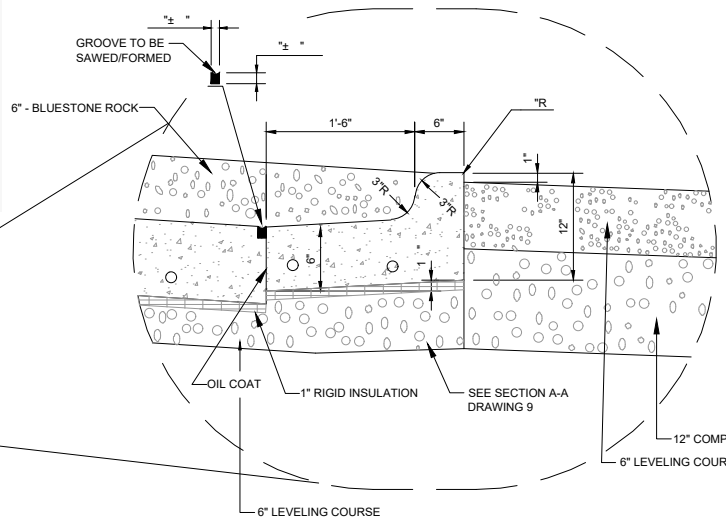
P.C.C. PAVEMENT SECTION
NTS



PLAN
NTS



SECTION A-A
COMBINED CONCRETE CURB AND GUTTER DETAIL
NTS



THIS DRAWING FOR
REFERENCE ONLY

REVISIONS			
NO.	DESCRIPTION	BY	DATE

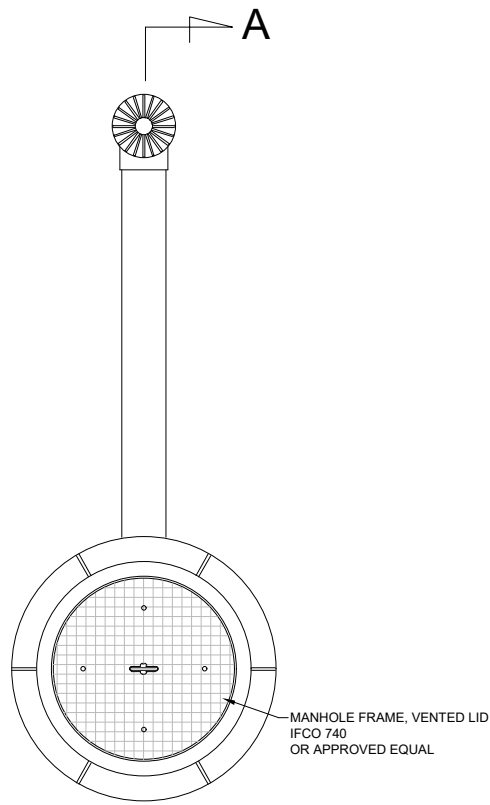
VERIFY SCALE!
THESE PRINTS MAY BE REDUCED.
LINE BELOW MEASURES ONE INCH
ON ORIGINAL DRAWING.
MODIFY SCALE ACCORDINGLY!



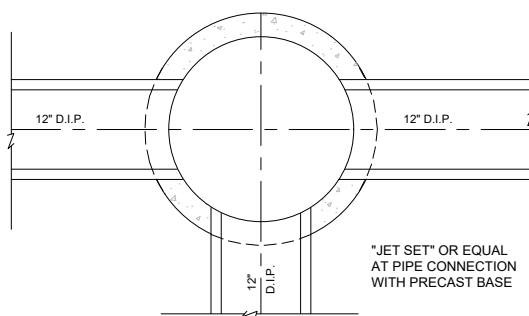
DRAWN BY: BJD
DSGN. BY: TFO
APPR. BY: TFO
DATE: 07/2019
Q.C. REVIEW
BY: _____
DATE: _____

ALASKA REGIONAL FIRE TRAINING CENTER
TRAINING EQUIPMENT REHABILITATION
KENAI ALASKA
SPILL FIRE TRAINER CONCRETE LAYOUT AND JOINT DETAILS

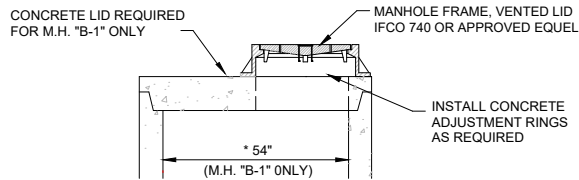
PROJECT NUMBER
2950/042
SHEET NUMBER
7
DRAWING NUMBER
2-1



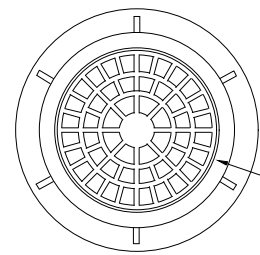
PLAN
MANHOLE-TYPE "B"
N.T.S.



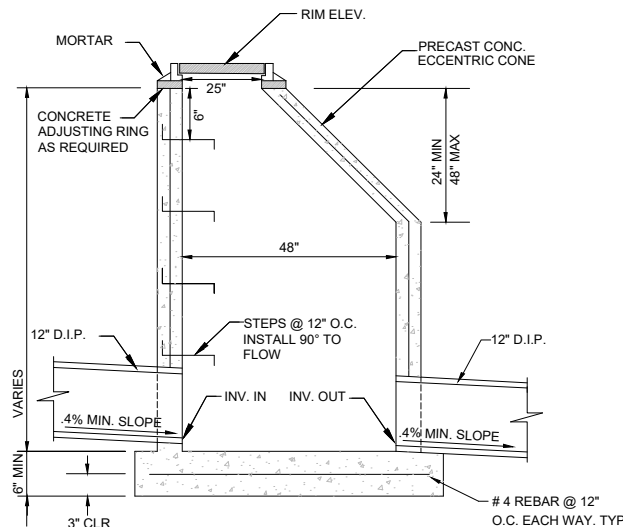
PLAN
NO SCALE



MANHOLE-TYPE "B-1" ONLY
N.T.S.

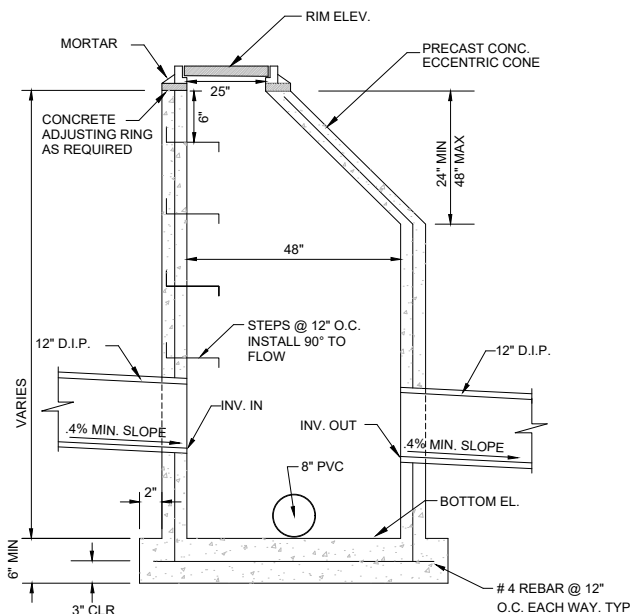


THIS DRAWING FOR
REFERENCE ONLY

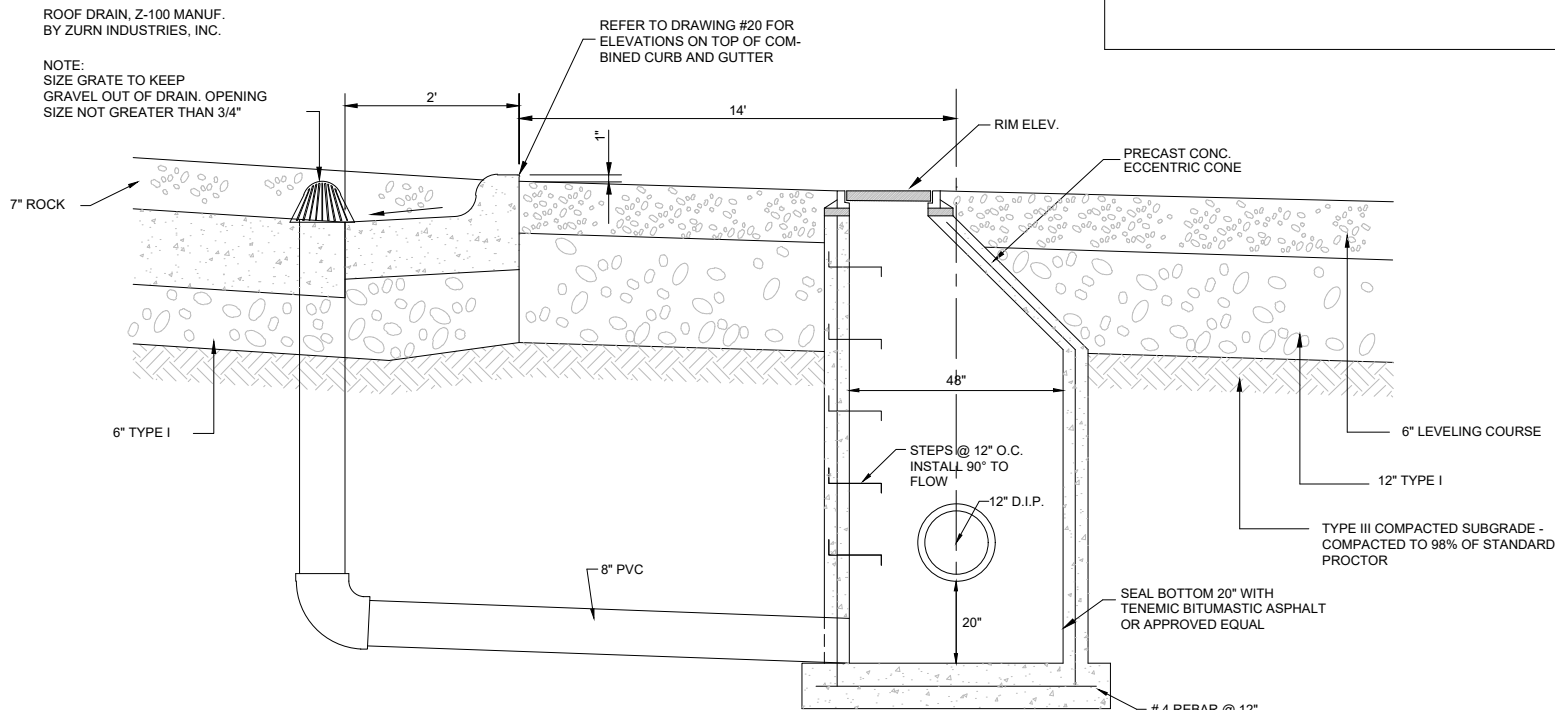


STORM DRAIN INLET-TYPE "A"
N.T.S.

M.H. "A-1"	TOP RIM EL.=87.95 INV. OUT=79.07
M.H. "A-2"	TOP RIM EL.=87.95 INV. OUT=78.87 INV. IN=78.77
M.H. "A-3"	TOP RIM EL.=88.00 INV. OUT=77.89 INV. IN=79.89



SECTION
MANHOLE-TYPE "B"
N.T.S.



SECTION A-A
MANHOLE-TYPE "B"
N.T.S.

M.H. "B-1"	TOP RIM EL.=88.70 BOTTOM M.H. EL.=75.73 INV. OUT=77.40 INV. IN=77.50
M.H. "B-2"	TOP RIM EL.=88.70 BOTTOM M.H. EL.=76.38 INV. OUT=78.05 INV. IN=78.15
M.H. "B-3"	TOP RIM EL.=88.70 BOTTOM M.H. EL.=77.03 INV. OUT=78.70
M.H. "B-4"	TOP RIM EL.=88.70 BOTTOM M.H. EL.=76.38 INV. OUT=78.05 INV. IN=78.15

THIS DRAWING FOR
REFERENCE ONLY

REVISIONS			
NO.	DESCRIPTION	BY	DATE

VERIFY SCALE!
THESE PRINTS MAY BE REDUCED.
LINE BELOW MEASURES ONE INCH
ON ORIGINAL DRAWING.
MODIFY SCALE ACCORDINGLY!



1 Engineering Place
Helena, MT 59602
406.442.3050
www.m-m.net

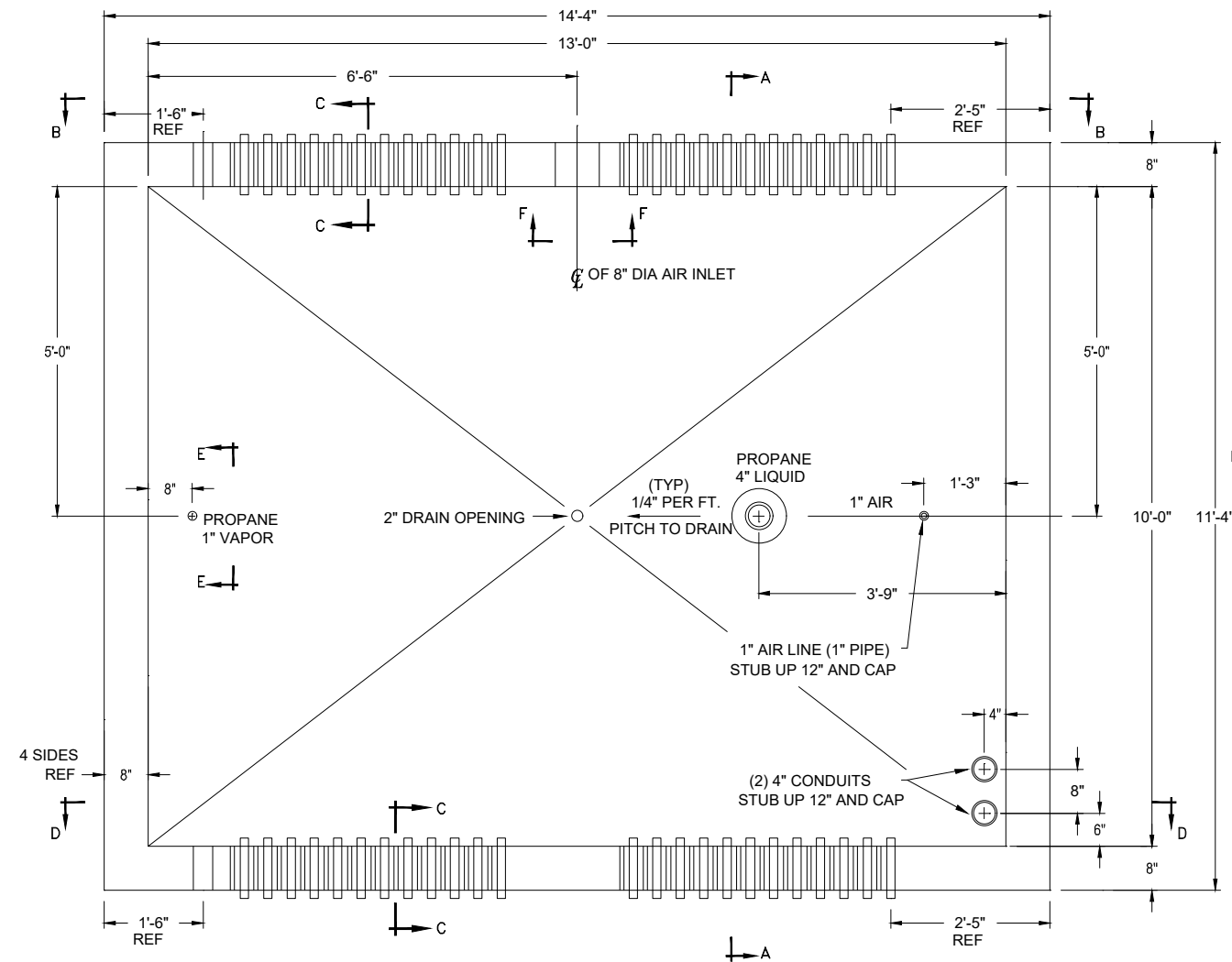
COPYRIGHT © MORRISON-MAIERLE, INC., 2019



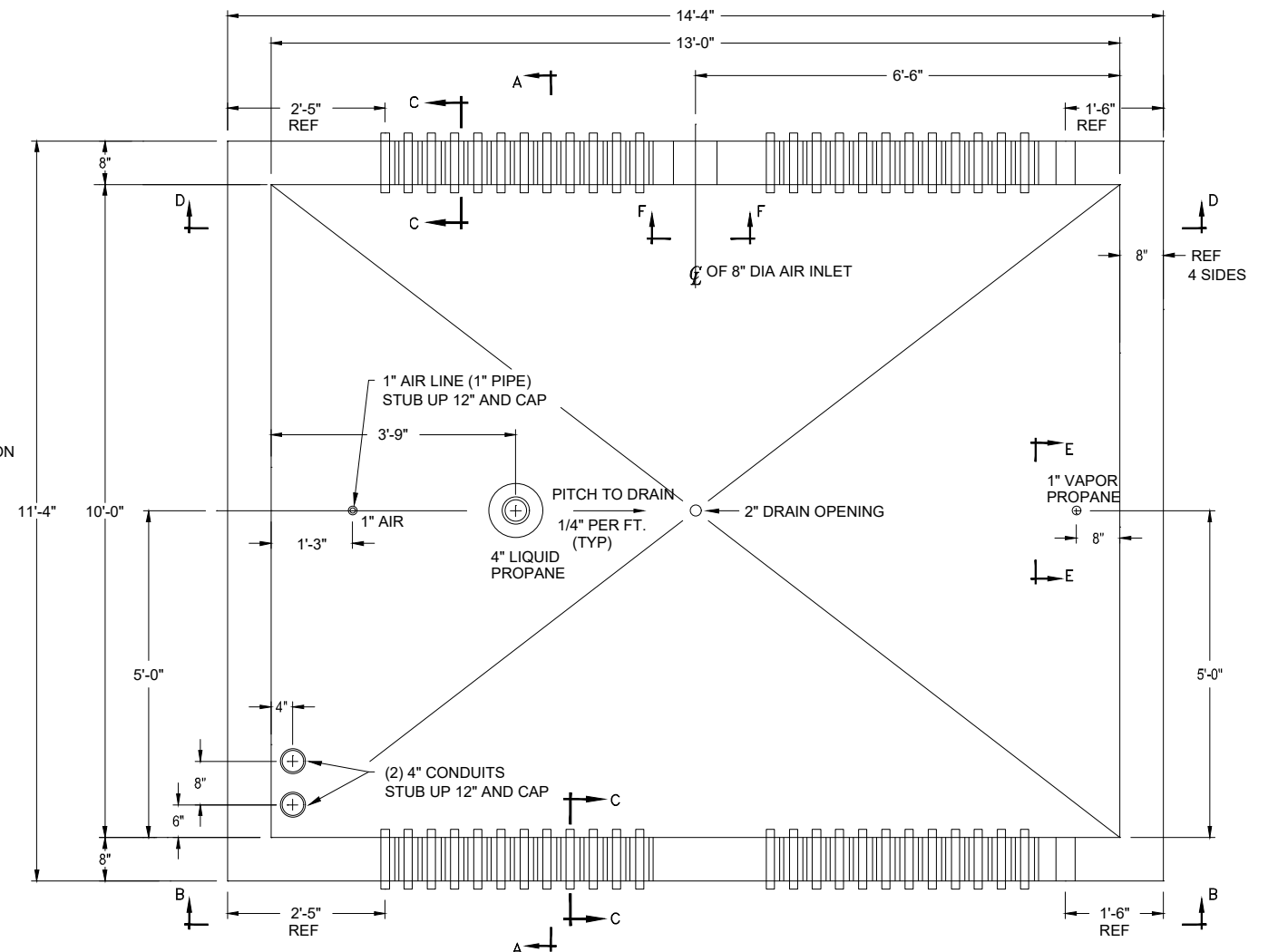
DRAWN BY: BJD
DSGN. BY: TFO
APPR. BY: TFO
DATE: 07/2019
Q.C. REVIEW
BY:
DATE:

ALASKA REGIONAL FIRE TRAINING CENTER
TRAINING EQUIPMENT REHABILITATION
ALASKA
TRAINING SITE MANHOLE DETAILS

PROJECT NUMBER
2950/042
SHEET NUMBER
8
DRAWING NUMBER
2-2



BUNKER #1 PLAN



BUNKER #2 PLAN

NOTES:

1. CONCRETE FOR BUNKERS IS HIGH-TEMPERATURE CONCRETE, 4000 PSI.
2. REMOVE ALL IN-WALL EXISTING PROPANE PIPING.
3. REPLACE WITH STAINLESS STEEL PIPING.
4. SEAL ALL NEW LOCATIONS WITH WATER PROOF SEALANT.

REFER TO SECTION 1.6
MEASUREMENT AND PAYMENT

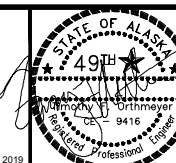
THIS DRAWING FOR
REFERENCE ONLY

REVISIONS			
NO.	DESCRIPTION	BY	DATE

**Morrison
Maierle**
engineers • surveyors • planners • scientists

1 Engineering Place
Helena, MT 59602
406.442.3050
www.m-m.net

COPYRIGHT © MORRISON-MAIERLE, INC., 2019



DRAWN BY: BJD
DSGN. BY: TFO
APPR. BY: TFO
DATE: 07/2019
Q.C. REVIEW
BY:
DATE:

KENAI

ALASKA REGIONAL FIRE TRAINING CENTER
TRAINING EQUIPMENT REHABILITATION

ALASKA

FACILITY INTERFACE BURNER CONTROL BUNKER

PROJECT NUMBER

2950/042

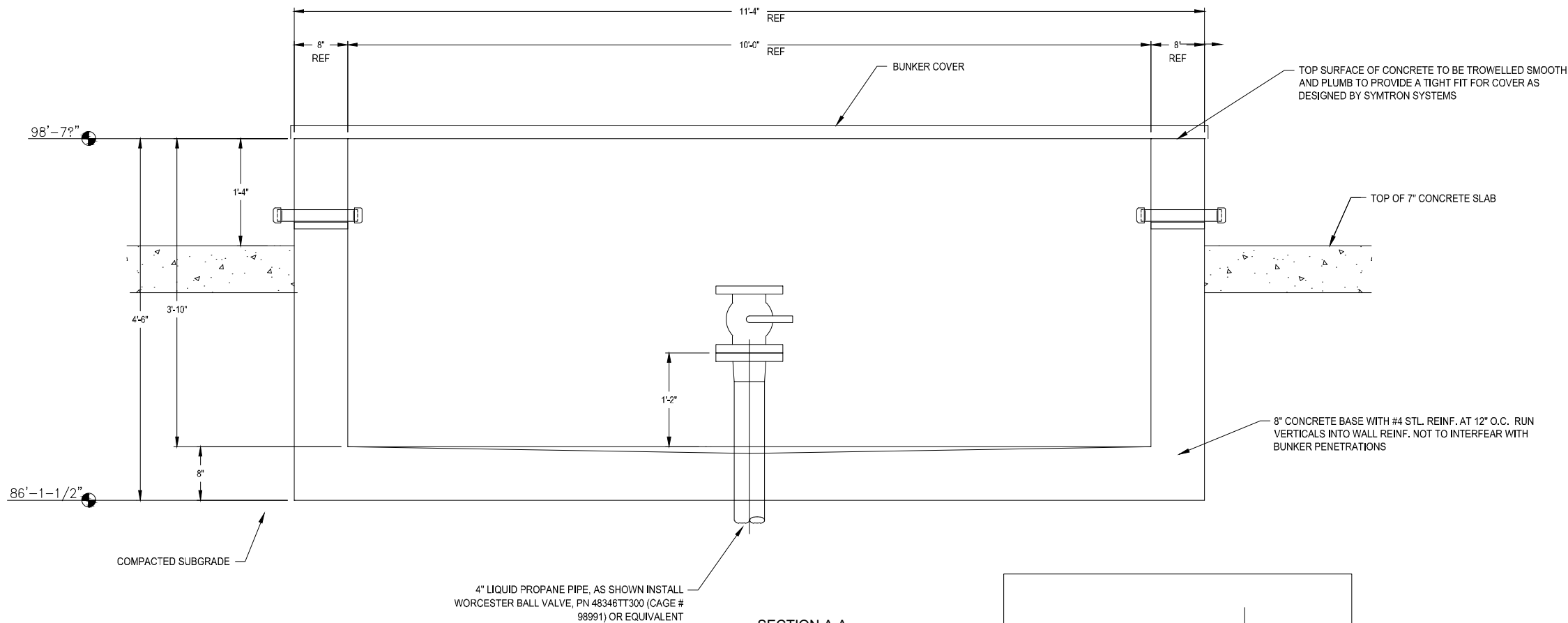
SHEET NUMBER

9

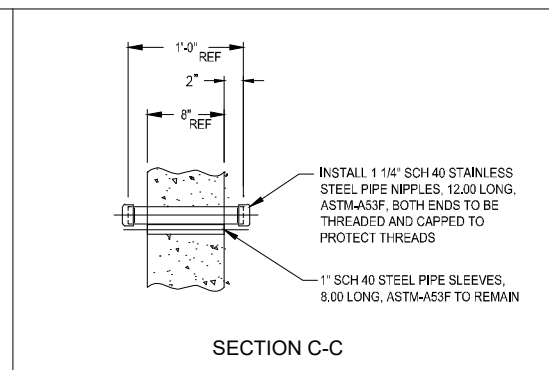
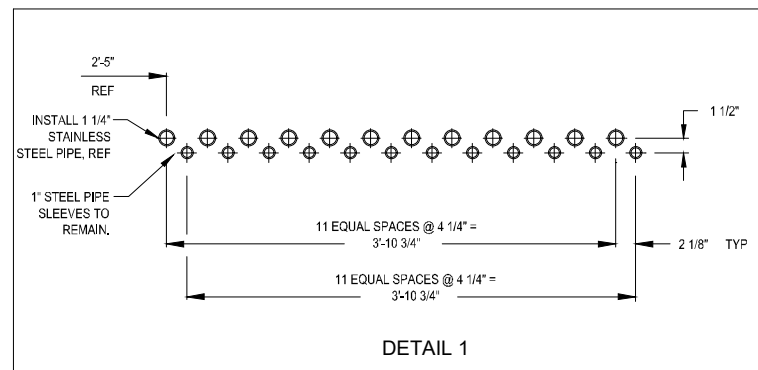
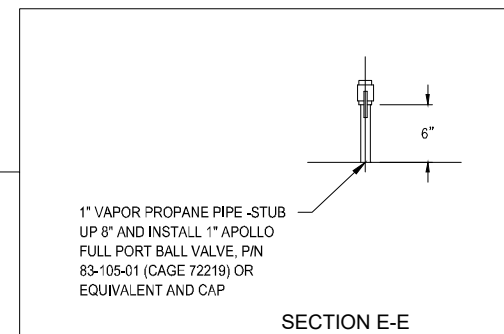
DRAWING NUMBER

2-3

R:12950 - KENAI/ACAD/SHEETS/2-3 BURNER CONTROL BUNKER.DWG PLOTTED BY:BRAD DRINVILLE ON Aug/01/2019

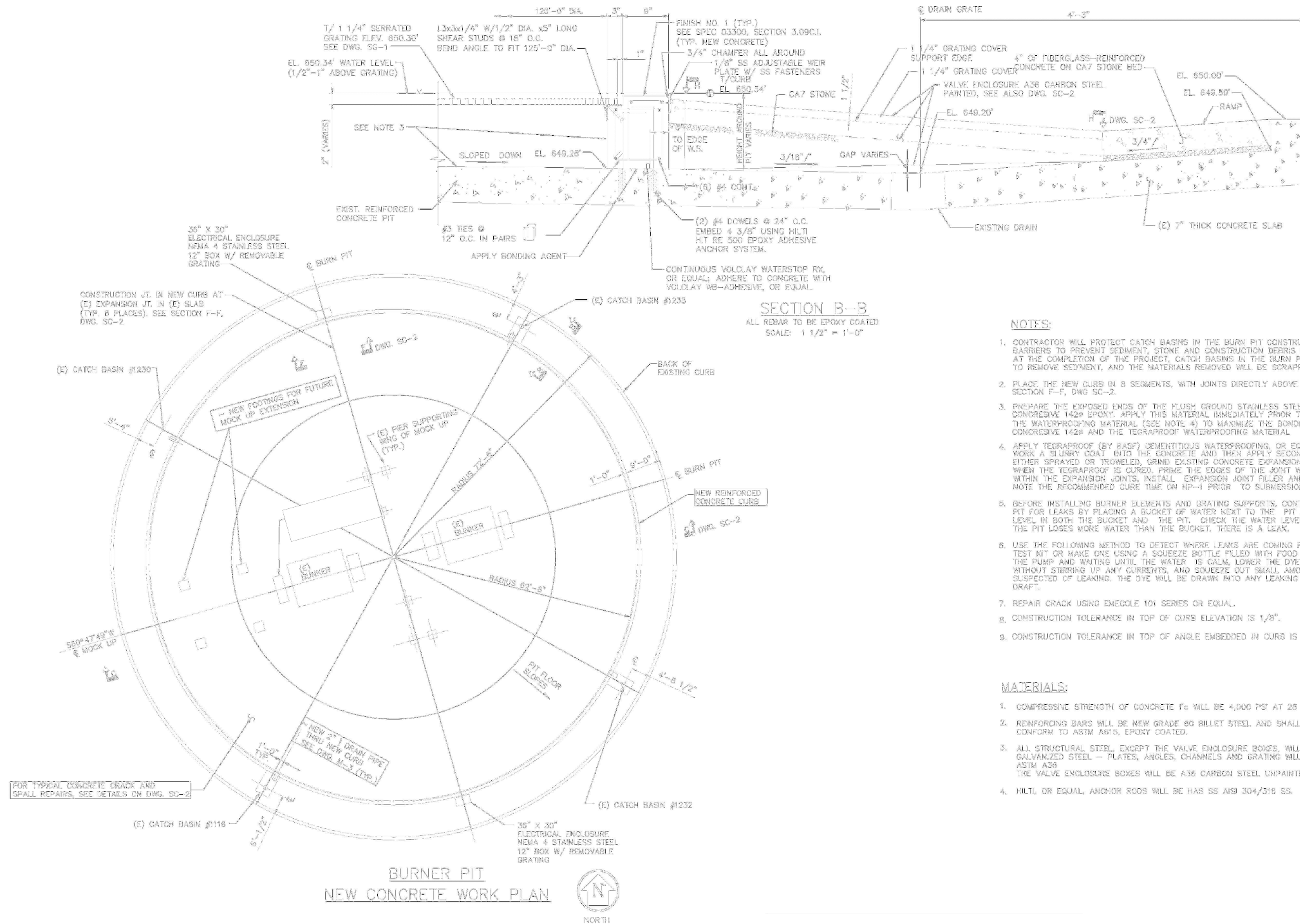


SECTION A-A
BUNKER SECTION



REFER TO SECTION 1.6
MEASUREMENT AND PAYMENT

THIS DRAWING FOR
REFERENCE ONLY



NOTES:

- CONTRACTOR WILL PROTECT CATCH BASINS IN THE BURN PIT CONSTRUCTION WITH BARRIERS TO PREVENT SEDIMENT, STONE AND CONSTRUCTION DEBRIS FROM ENTERING. AT THE COMPLETION OF THE PROJECT, CATCH BASINS IN THE BURN PIT WILL BE CLEANED TO REMOVE SEDIMENT, AND THE MATERIALS REMOVED WILL BE SCRAPPED.
- PLACE THE NEW CURB IN 8 SEGMENTS, WITH JOINTS DIRECTLY ABOVE EXISTING JOINTS. SEE SECTION F-F, DWG SC-2.
- PREPARE THE EXPOSED ENDS OF THE FLUSH GROUND STAINLESS STEEL ANCHORS USING BASF CONCRETE 1424 EPOXY. APPLY THIS MATERIAL IMMEDIATELY PRIOR TO THE APPLICATION OF THE WATERPROOFING MATERIAL (SEE NOTE 4) TO MAXIMIZE THE BONDING BETWEEN THE CONCRETE 1424 AND THE TEGRAPOOF WATERPROOFING MATERIAL.
- APPLY TEGRAPOOF (BY BASF) CEMENTITIOUS WATERPROOFING, OR EQUAL, OVER THE ENTIRE SLAB. WORK A SLURRY COAT INTO THE CONCRETE AND THEN APPLY SECOND COAT EITHER SPRAYED OR TROWELED. GRIND EXISTING CONCRETE EXPANSION JOINTS (DWG SC-1) CUT WHEN THE TEGRAPOOF IS CURED. PRIME THE EDGES OF THE JOINT WITH BASF PRIMER 733. WITHIN THE EXPANSION JOINTS, INSTALL EXPANSION JOINT FILLER AND SONOLASTIC NP-1. NOTE THE RECOMMENDED CURE TIME ON NP-1 PRIOR TO SUBMERSION.
- BEFORE INSTALLING BURNER ELEMENTS AND GRATING SUPPORTS, CONTRACTOR WILL TEST THE PIT FOR LEAKS BY PLACING A BUCKET OF WATER NEXT TO THE PIT AND MARKING THE WATER LEVEL IN BOTH THE BUCKET AND THE PIT. CHECK THE WATER LEVEL AFTER 24 HOURS. IF THE PIT LOSES MORE WATER THAN THE BUCKET, THERE IS A LEAK.
- USE THE FOLLOWING METHOD TO DETECT WHERE LEAKS ARE COMING FROM. PURCHASE A DYE TEST KIT OR MAKE ONE USING A SQUEEZE BOTTLE FILLED WITH FOOD DYE. AFTER TURNING OFF THE PUMP AND WAITING UNTIL THE WATER IS CALM, LOWER THE DYE BOTTLE INTO THE WATER WITHOUT STIRRING UP ANY CURRENTS, AND SQUEEZE OUT SMALL AMOUNTS OF DYE NEAR AREAS SUSPECTED OF LEAKING. THE DYE WILL BE DRAWN INTO ANY LEAKING AREAS LIKE SMOKE IN A DRAFT.
- REPAIR CRACK USING EMECOLE 101 SERIES OR EQUAL.
- CONSTRUCTION TOLERANCE IN TOP OF CURB ELEVATION IS 1/8".
- CONSTRUCTION TOLERANCE IN TOP OF ANGLE EMBEDDED IN CURB IS 1/8".

MATERIALS:

- COMPRESSIVE STRENGTH OF CONCRETE f_c WILL BE 4,000 PSI AT 28 DAYS.
- REINFORCING BARS WILL BE NEW GRADE 60 BILLET STEEL AND SHALL CONFORM TO ASTM A615, EPOXY COATED.
- ALL STRUCTURAL STEEL, EXCEPT THE VALVE ENCLOSURE BOXES, WILL BE GALVANIZED STEEL - PLATES, ANGLES, CHANNELS AND GRATING WILL BE ASTM A36. THE VALVE ENCLOSURE BOXES WILL BE A36 CARBON STEEL UNPAINTED.
- HILT, OR EQUAL, ANCHOR RODS WILL BE HAS SS AISI 304/316 SS.

CONTRACTOR TO VERIFY ALL ELEVATIONS AND DIMENSIONS IN THE FIELD PRIOR TO SHOP DRAWING SUBMITTAL

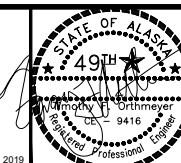
REVISIONS				
NO.	DESCRIPTION	BY	DATE	

VERIFY SCALE!
THESE PRINTS MAY BE REDUCED.
LINE BELOW MEASURES ONE INCH
ON ORIGINAL DRAWING.
MODIFY SCALE ACCORDINGLY!

**Morrison
Maierle**
engineers • surveyors • planners • scientists

1 Engineering Place
Helena, MT 59602
406.442.3050
www.m-m.net

COPYRIGHT © MORRISON-MAIERLE, INC., 2019



DRAWN BY: BJD
DSGN. BY: TFO
APPR. BY: TFO
DATE: 07/2019
Q.C. REVIEW
BY: _____
DATE: _____

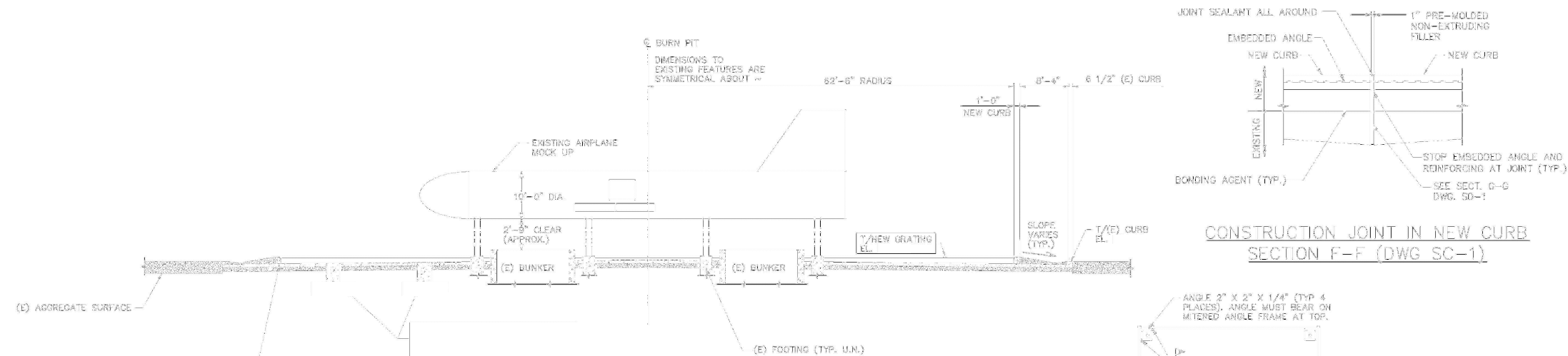
KENAI

ALASKA REGIONAL FIRE TRAINING CENTER
TRAINING EQUIPMENT REHABILITATION

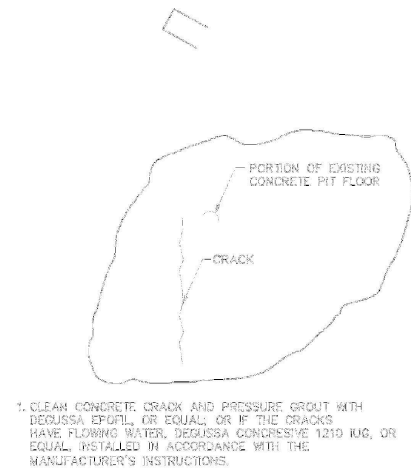
ALASKA

SPILL FIRE TRAINER BURN PIT PLAN

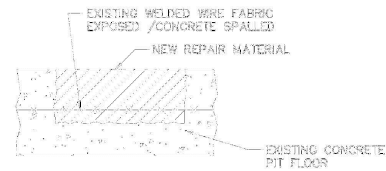
PROJECT NUMBER
2950/042
SHEET NUMBER
11
DRAWING NUMBER
SC-1



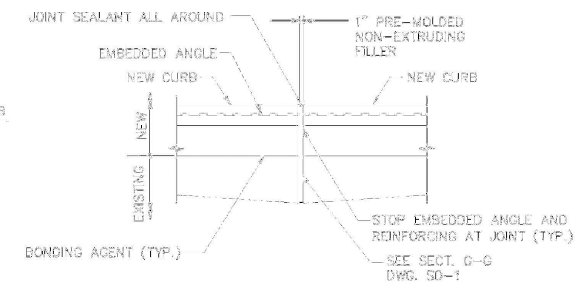
SECTION C-C (DWG. SC-1)
SCALE: 1/8"=1'-0"



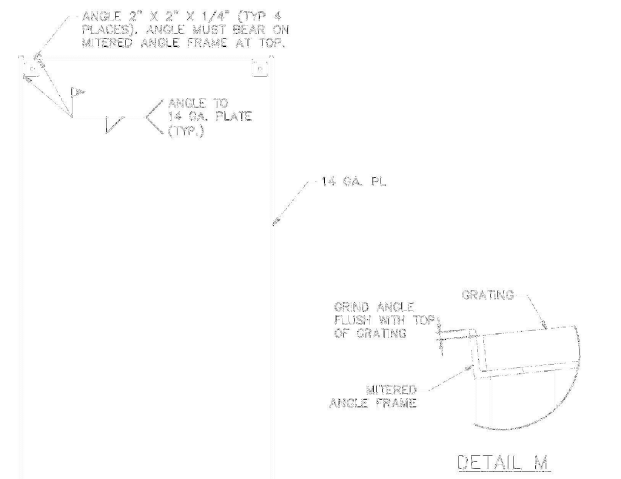
CRACK REPAIR



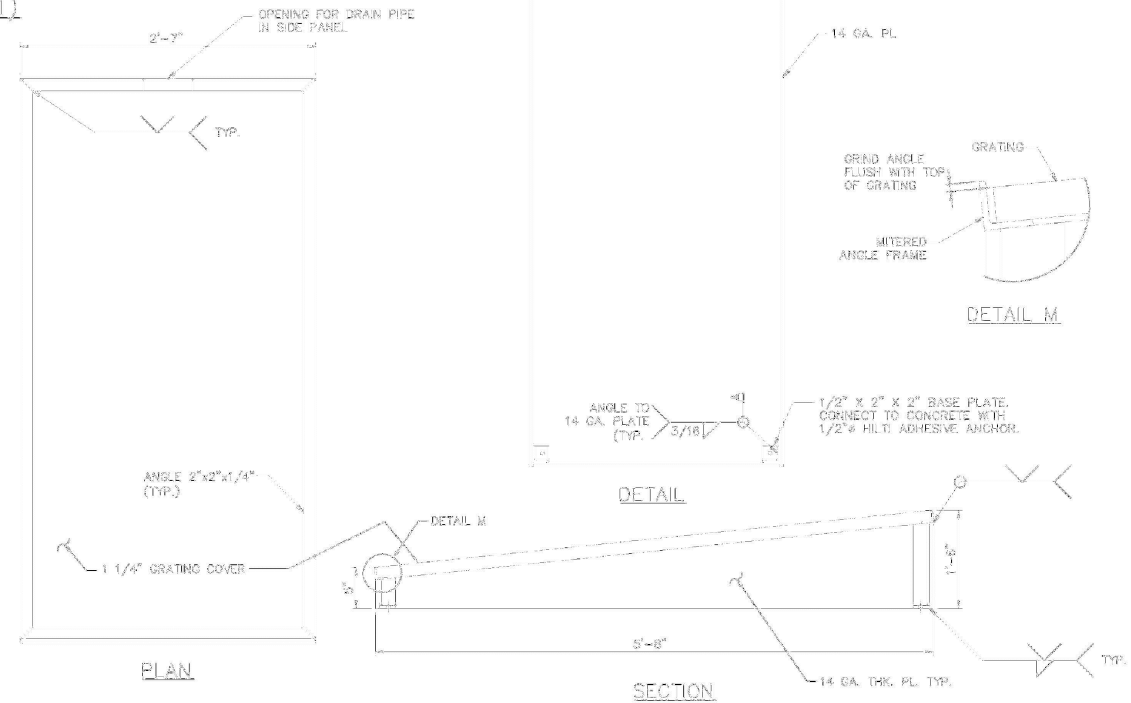
BROKEN AND SPALLED EXISTING CONCRETE REPAIR



CONSTRUCTION JOINT IN NEW CURB
SECTION F-F (DWG. SC-1)



DETAIL M

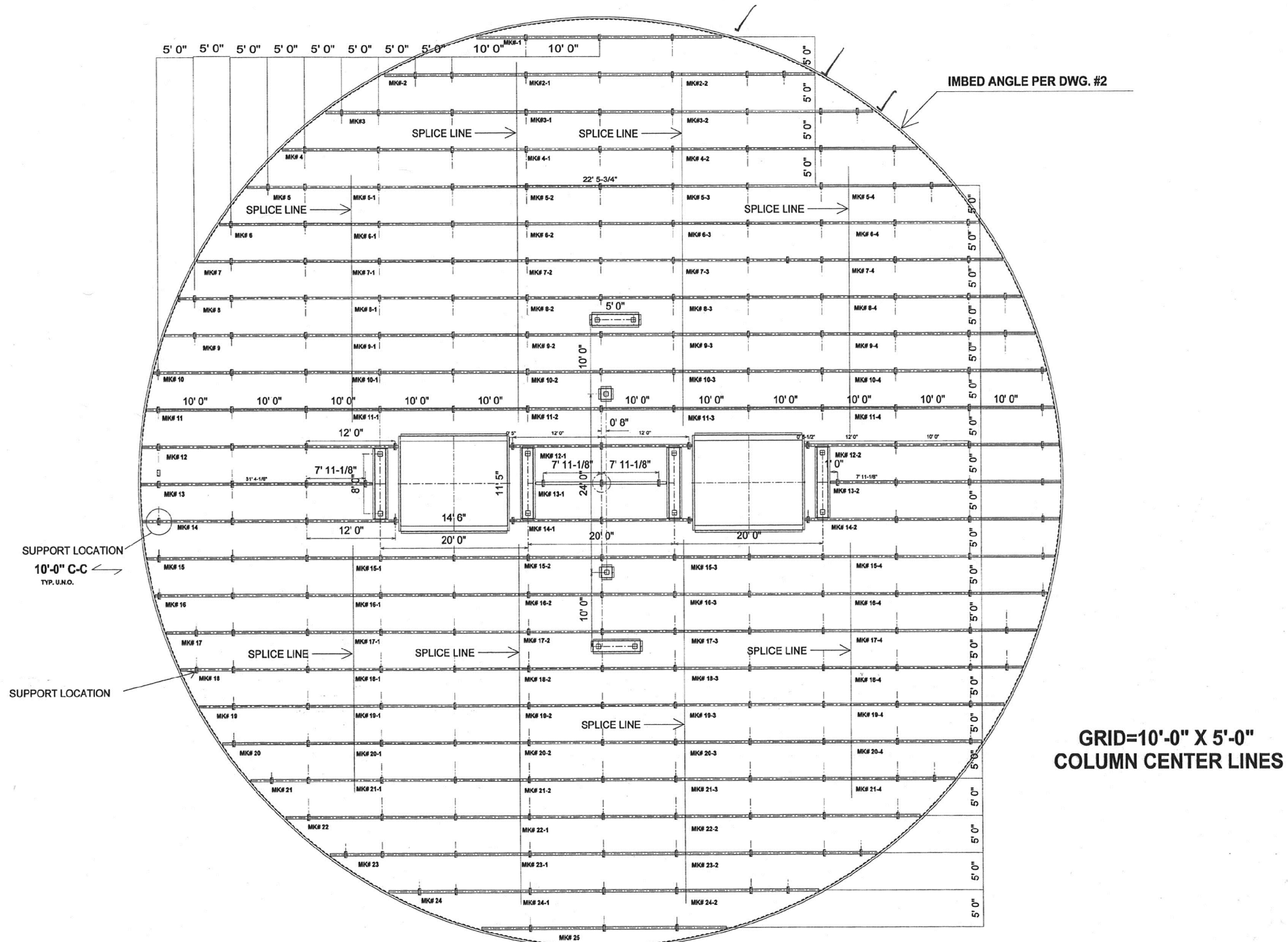


PLAN

DRAIN/VALVE ENCLOSURE
SECTION H-H (DWG. SC-1)
SCALE: NONE

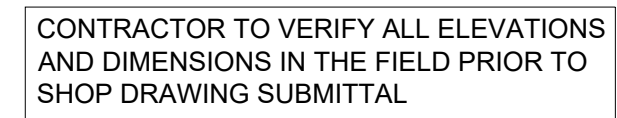
SECTION

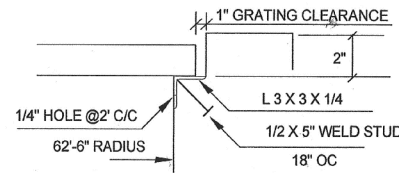
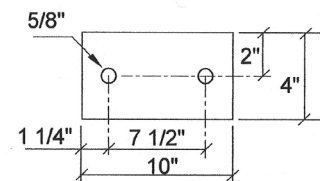
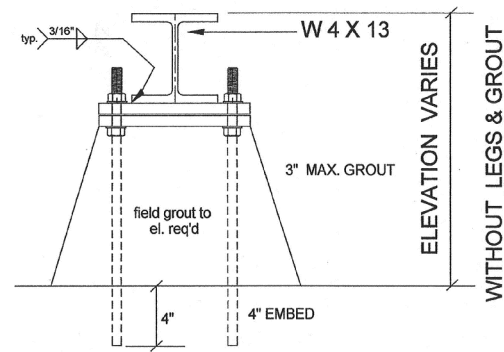
CONTRACTOR TO VERIFY ALL
ELEVATIONS AND DIMENSIONS
IN THE FIELD PRIOR TO SHOP
DRAWING SUBMITTAL



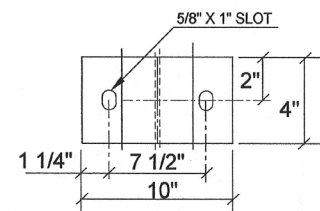
CONTRACTOR TO VERIFY ALL ELEVATIONS
AND DIMENSIONS IN THE FIELD PRIOR TO
SHOP DRAWING SUBMITTAL

<div>VERIFY SCALE!</div> <div>THESE PRINTS MAY BE REDUCED. LINE BELOW MEASURES ONE INCH ON ORIGINAL DRAWING.</div> <div><div></div></div> <div>MODIFY SCALE ACCORDINGLY!</div>	REVISIONS				<div><div><div></div><div></div><div></div></div><div>Morrison Maierle</div><div>engineers • surveyors • planners • scientists</div></div> <div><div><div></div><div></div></div><div>1 Engineering Place Helena, MT 59602</div><div><div></div><div>406.442.3050</div></div><div><div></div><div>www.m-m.net</div></div></div> <div><div><div></div><div>49th</div><div></div></div><div>STATE OF ALASKA</div><div><div></div><div>Orthmeyer</div><div>9416</div></div><div><div></div><div>Kenai</div><div>Professional Engineer</div></div></div> <div><div>DRAWN BY: BJD</div><div>DSGN. BY: TFO</div><div>APPR. BY: TFO</div><div>DATE: 07/2019</div><div>Q.C. REVIEW</div><div>BY: _____</div><div>DATE: _____</div></div>	ALASKA REGIONAL FIRE TRAINING CENTER TRAINING EQUIPMENT REHABILITATION		PROJECT NUMBER 2950/042
	NO.	DESCRIPTION	BY	DATE		ALASKA		SHEET NUMBER 13
R:\2950 - KENAI\ACAD\SHEETS\SG-1 GRATING SUPPORT PLAN.DWG PLOTTED BY:BRAD DRINVILLE on Aug/01/2019								
KENAI							DRAWING NUMBER SG-1	
SPILL FIRE TRAINER GRATING SUPPORT PLAN								

SG-2

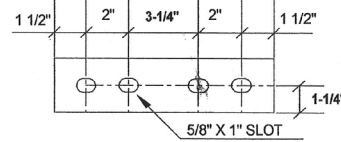


SETTING PLATE DET.
PL 1/4 X 4" X 10"
259 REQ'D



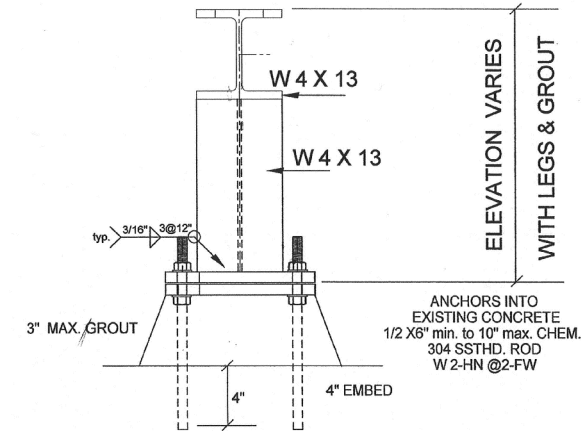
BASE PLATE DET.
PL 1/2 X 4" X 10"

NOTES:
MATERIAL = A-36
HOT DIP GALV.

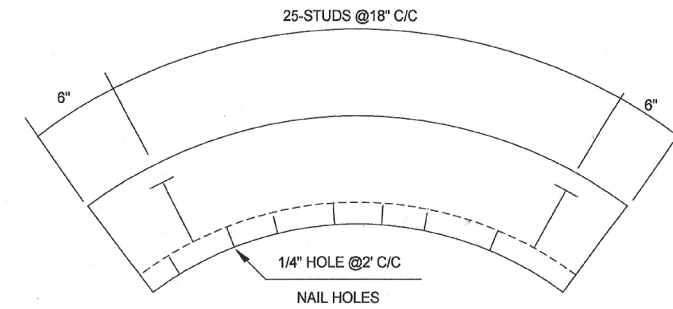


PL 1/4 X 2-1/2 X 10-1/4"
SPLICE PLATES
136 REQ'D

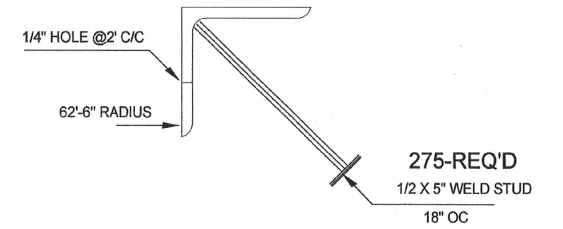
SUPPLY WITH
2- A325 1/2 X 1-3/4" B,N,W



ANCHORS INTO
EXISTING CONCRETE
1/2 X 6" min. to 10" max. CHEM.
304 SSTHD. ROD
W 2-HN @ 2-FW

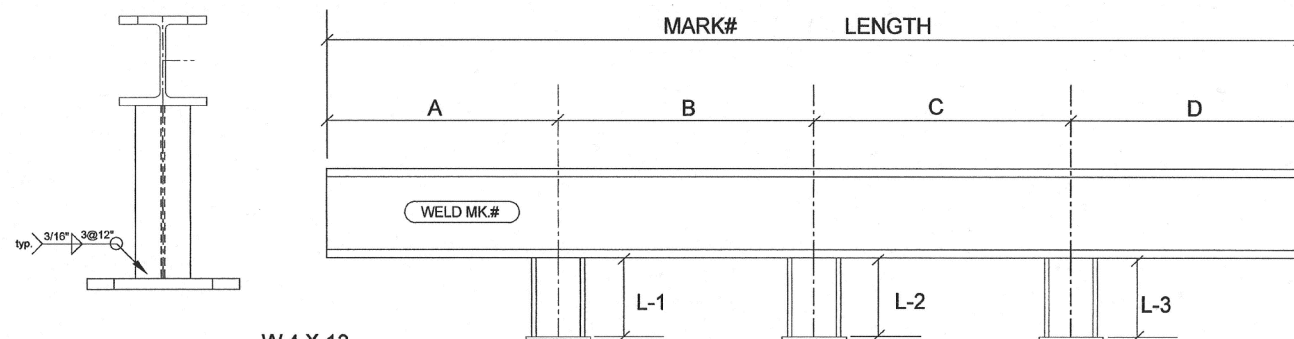


INBED ANGLE
11-L 3 X 3 X 1/4 X 40'-0" ROLLED TO 62'-6" INSIDE RADIUS
SHOP TRIM TO 37'-0" LONG AFTER ROLLING
AND BEFORE GALV.



275-REQ'D
1/2 X 5" WELD STUD
18" OC

NOTES:
MATERIAL = A-36
PAINT = HOT DIP GALV.



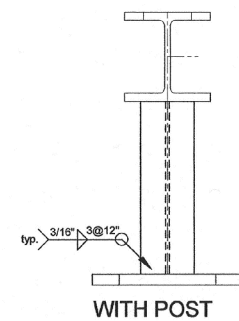
W 4 X 13
PL 1/2 X 4" X 10"

MARK#	LENGTH	A	B	C	D	L-1	L-2	L-3
1	33'-2 5/8"	6'-7 5/16"	10'-0"	10'-0"	6'-7 5/16"			
12-1	24'-10"	5"	12'-0"	12'-0"	5"			
13-1	17'-10 1/4"	1'-0"	7'-11 1/8"	7'-11 1/8"	1'-0"			
14-1	24'-10"	5"	12'-0"	12'-0"	5"			
25	33'-2 5/8"	6'-7 5/16"	10'-0"	10'-0"	6'-7 5/16"			

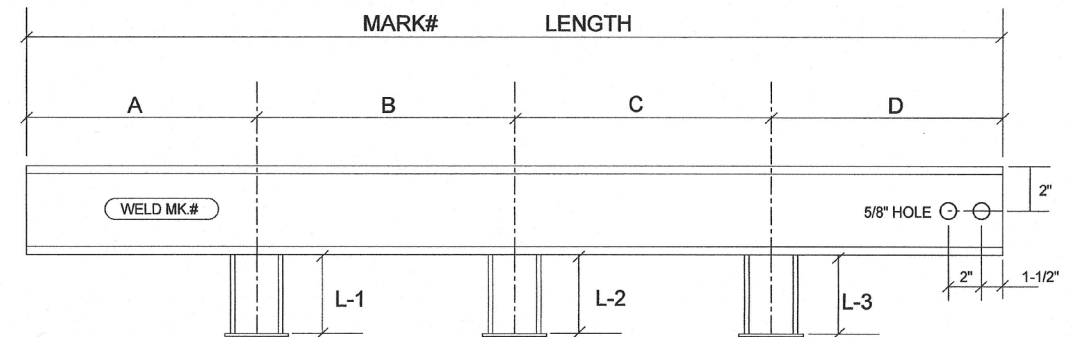
1-EACH REQ'D

NOTES:
HOLES:
SLOTS:
MATERIAL = A-36
HOT DIP GALV.

U.N.O.



WITH POST



MARK#	LENGTH	A	B	C	D	L-1	L-2	L-3
3	25'-10 9/16"	2'-1 11/16"	5'-0"	10'-0"	8'-8 7/8"			
4	31'-9 13/16"	3'-0 15/16"	10'-0"	10'-0"	8'-8 7/8"			
8	23'-4 5/16"	2'-1 7/16"	5'-0"	10'-0"	6'-2 7/8"			
9	25'-3 11/16"	4'-0 13/16"	5'-0"	10'-0"	6'-2 7/8"			
10	26'-9 7/16"	0'-6 9/16"	10'-0"	10'-0"	6'-2 7/8"			
11	27'-9 7/8"	1'-7"	10'-0"	10'-0"	6'-2 7/8"			
15	27'-9 7/8"	1'-7"	10'-0"	10'-0"	6'-2 7/8"			
16	26'-9 7/16"	6 9/16"	10'-0"	10'-0"	6'-2 7/8"			
17	25'-3 11/16"	4'-0 13/16"	5'-0"	10'-0"	6'-2 7/8"			
18	23'-4 5/16"	2'-1 7/16"	5'-0"	10'-0"	6'-2 7/8"			
22	31'-9 13/16"	3'-0 15/16"	10'-0"	10'-0"	8'-8 7/8"			
23	25'-10 9/16"	2'-1 11/16"	5"	10'-0"	8'-8 7/8"			

1-EACH REQ'D

NOTES:
HOLES:
SLOTS:
MATERIAL = A-36
HOT DIP GALV.

U.N.O.

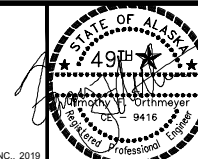
CONTRACTOR TO VERIFY ALL
ELEVATIONS AND DIMENSIONS
IN THE FIELD PRIOR TO SHOP
DRAWING SUBMITTAL

NO.	DESCRIPTION	BY	DATE
1	VERIFY SCALE		
2	THESE PRINTS MAY BE REDUCED. LINE BELOW MEASURES ONE INCH ON ORIGINAL DRAWING.		
3	MODIFY SCALE ACCORDINGLY!		

**Morrison
Maierle**
engineers • surveyors • planners • scientists

1 Engineering Place
Helena, MT 59602
406.442.3050
www.m-m.net

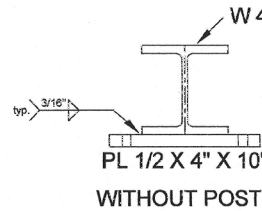
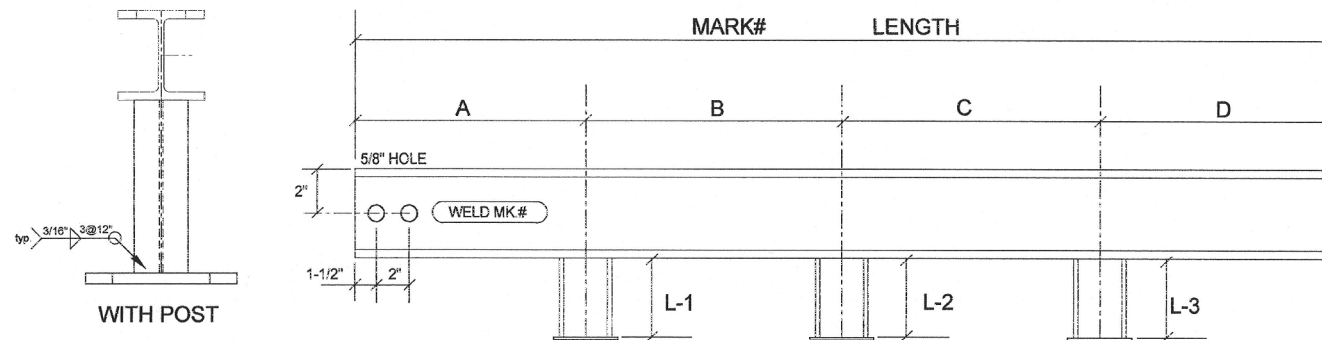
COPYRIGHT © MORRISON-MAIERLE, INC., 2019



DRAWN BY: BJD
DSGN. BY: TFO
APPR. BY: TFO
DATE: 07/2019
Q.C. REVIEW
BY: _____
DATE: _____

ALASKA REGIONAL FIRE TRAINING CENTER
TRAINING EQUIPMENT REHABILITATION
KENAI ALASKA
SPILL FIRE TRAINER GRATING SUPPORT DETAILS

PROJECT NUMBER
2950/042
SHEET NUMBER
15
DRAWING NUMBER
SG-3

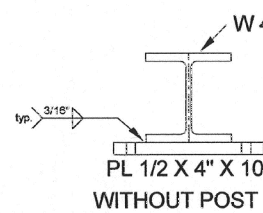
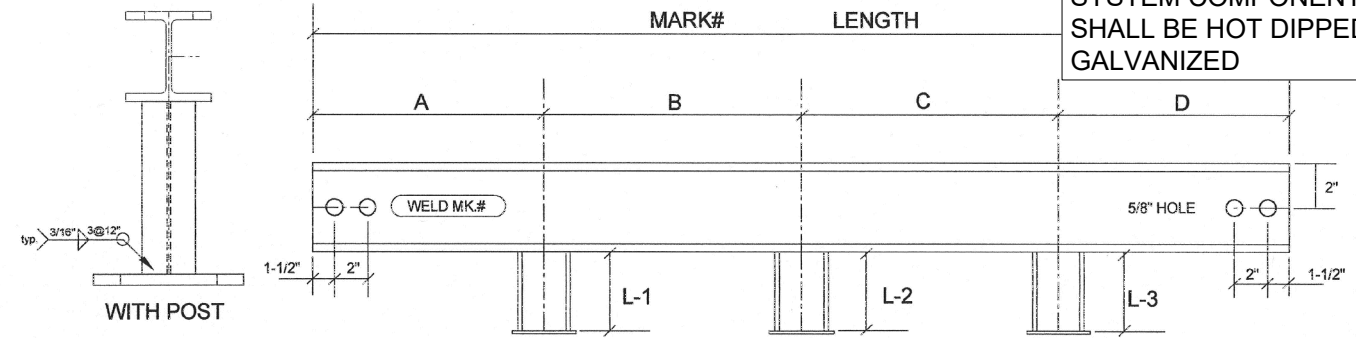


MARK#	LENGTH	A	B	C	D	L-1	L-2	L-3
3-2	25'-10 9/16"	8'-8 7/8"	10'-0"	5'-0"	2'-1 11/16"			
4-2	31'-9 13/16"	8'-8 7/8"	10'-0"	10'-0"	3'-0 15/16"			
8-4	23'-4 5/16"	6'-2 7/8"	10'-0"	5'-0"	2'-1 7/16"			
9-4	25'-3 11/16"	6'-2 7/8"	10'-0"	5'-0"	4'-0 13/16"			
10-4	26'-9 7/16"	6'-2 7/8"	10'-0"	10'-0"	0'-6 9/16"			
11-4	27'-9 7/8"	6'-2 7/8"	10'-0"	10'-0"	1'-7"			
22-2	31'-9 13/16"	8'-8 7/8"	10'-0"	10'-0"	3'-0 15/16"			
23-2	25'-10 9/16"	8'-8 7/8"	10'-0"	5'-0"	2'-1 11/16"			
15-4	27'-9 7/8"	6'-2 7/8"	10'-0"	10'-0"	1'-7"			
16-4	28'-9 7/16"	6'-2 7/8"	10'-0"	10'-0"	0'-6 9/16"			
17-4	25'-3 11/16"	6'-2 7/8"	10'-0"	5'-0"	4'-0 13/16"			
18-4	23'-4 5/16"	6'-2 7/8"	10'-0"	5'-0"	2'-1 7/16"			

1-EACH REQ'D

NOTES:
HOLES:
SLOTS:
MATERIAL = A-36
HOT DIP GALV.

U.N.O.
U.N.O.



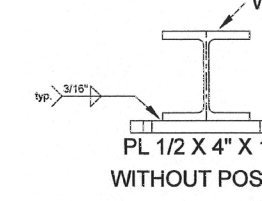
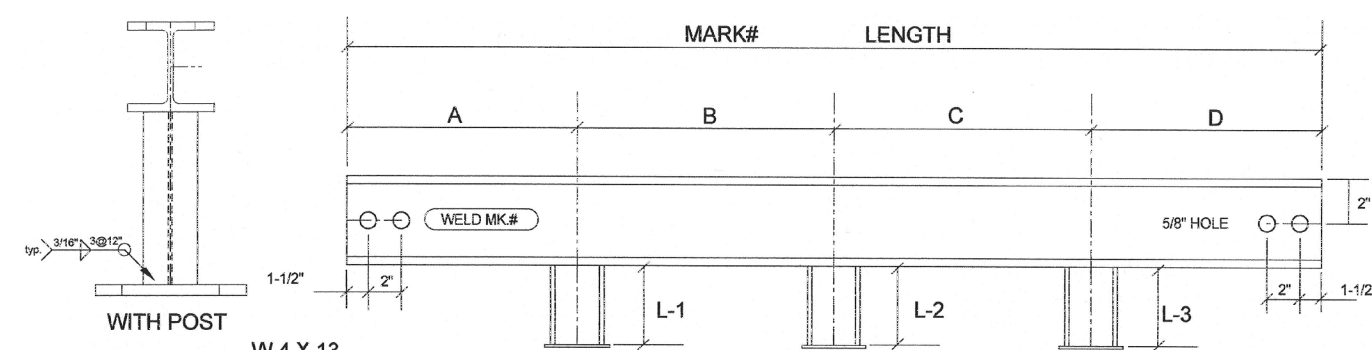
MARK#	LENGTH	A	B	C	D	L-1	L-2	L-3
17-2	22'-5 3/4"	1'-2 7/8"	10'-0"	10'-0"	1'-2 7/8"			
18-2	22'-5 3/4"	1'-2 7/8"	10'-0"	10'-0"	1'-2 7/8"			
19-2	22'-5 3/4"	1'-2 7/8"	10'-0"	10'-0"	1'-2 7/8"			
20-2	22'-5 3/4"	1'-2 7/8"	10'-0"	10'-0"	1'-2 7/8"			
21-2	22'-5 3/4"	1'-2 7/8"	10'-0"	10'-0"	1'-2 7/8"			
22-1	22'-5 3/4"	1'-2 7/8"	10'-0"	10'-0"	1'-2 7/8"			
23-1	22'-5 3/4"	1'-2 7/8"	10'-0"	10'-0"	1'-2 7/8"			
24-1	22'-5 3/4"	1'-2 7/8"	10'-0"	10'-0"	1'-2 7/8"			

1-EACH REQ'D

NOTES:
HOLES:
SLOTS:
MATERIAL = A-36
HOT DIP GALV.

U.N.O.
U.N.O.

ALL 1 1/4" STEEL DECK
SYSTEM COMPONENTS,
SHALL BE HOT DIPPED
GALVANIZED

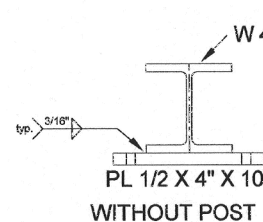
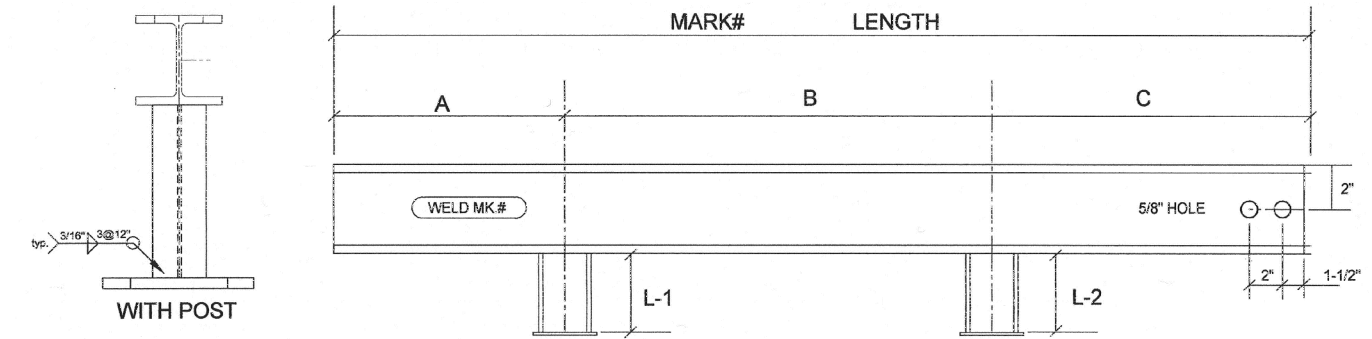


MARK#	LENGTH	A	B	C	D	L-1	L-2	L-3
2-1	22'-5 3/4"	1'-2 7/8"	10'-0"	10'-0"	1'-2 7/8"			
3-1	22'-5 3/4"	1'-2 7/8"	10'-0"	10'-0"	1'-2 7/8"			
4-1	22'-5 3/4"	1'-2 7/8"	10'-0"	10'-0"	1'-2 7/8"			
5-2	22'-5 3/4"	1'-2 7/8"	10'-0"	10'-0"	1'-2 7/8"			
6-2	22'-5 3/4"	1'-2 7/8"	10'-0"	10'-0"	1'-2 7/8"			
7-2	22'-5 3/4"	1'-2 7/8"	10'-0"	10'-0"	1'-2 7/8"			
8-2	22'-5 3/4"	1'-2 7/8"	10'-0"	10'-0"	1'-2 7/8"			
9-2	22'-5 3/4"	1'-2 7/8"	10'-0"	10'-0"	1'-2 7/8"			
10-2	22'-5 3/4"	1'-2 7/8"	10'-0"	10'-0"	1'-2 7/8"			
11-2	22'-5 3/4"	1'-2 7/8"	10'-0"	10'-0"	1'-2 7/8"			
15-2	22'-5 3/4"	1'-2 7/8"	10'-0"	10'-0"	1'-2 7/8"			
16-2	22'-5 3/4"	1'-2 7/8"	10'-0"	10'-0"	1'-2 7/8"			

1-EACH REQ'D

NOTES:
HOLES:
SLOTS:
MATERIAL = A-36
HOT DIP GALV.

U.N.O.
U.N.O.



MARK#	LENGTH	A	B	C	L-1	L-2
2	17'-11 1/4"	4'-2 3/8"	5'-0"	8'-8 7/8"		
5	14'-0 3/16"	2'-9 5/16"	5'-0"	6'-2 7/8"		
6	17'-9 11/16"	1'-6 13/16"	10'-0"	6'-2 7/8"		
7	20'-10 5/8"	4'-7 3/4"	10'-0"	6'-2 7/8"		
19	20'-10 5/8"	4'-7 3/4"	10'-0"	6'-2 7/8"		
20	17'-9 11/16"	1'-6 13/16"	10'-0"	6'-2 7/8"		
21	14'-0 3/16"	2'-9 5/16"	5'-0"	6'-2 7/8"		
24	17'-11 1/4"	4'-2 3/8"	5'-0"	8'-8 7/8"		

1-EACH REQ'D

NOTES:
HOLES:
SLOTS:
MATERIAL = A-36
HOT DIP GALV.

U.N.O.
U.N.O.

CONTRACTOR TO VERIFY ALL
ELEVATIONS AND DIMENSIONS
IN THE FIELD PRIOR TO SHOP
DRAWING SUBMITTAL

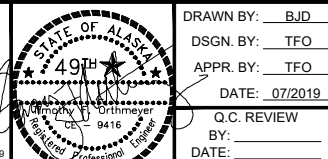
REVISIONS			
NO.	DESCRIPTION	BY	DATE

VERIFY SCALE!
THESE PRINTS MAY BE REDUCED.
LINE BELOW MEASURES ONE INCH
ON ORIGINAL DRAWING.
MODIFY SCALE ACCORDINGLY!



1 Engineering Place
Helena, MT 59602
406.442.3050
www.m-m.net

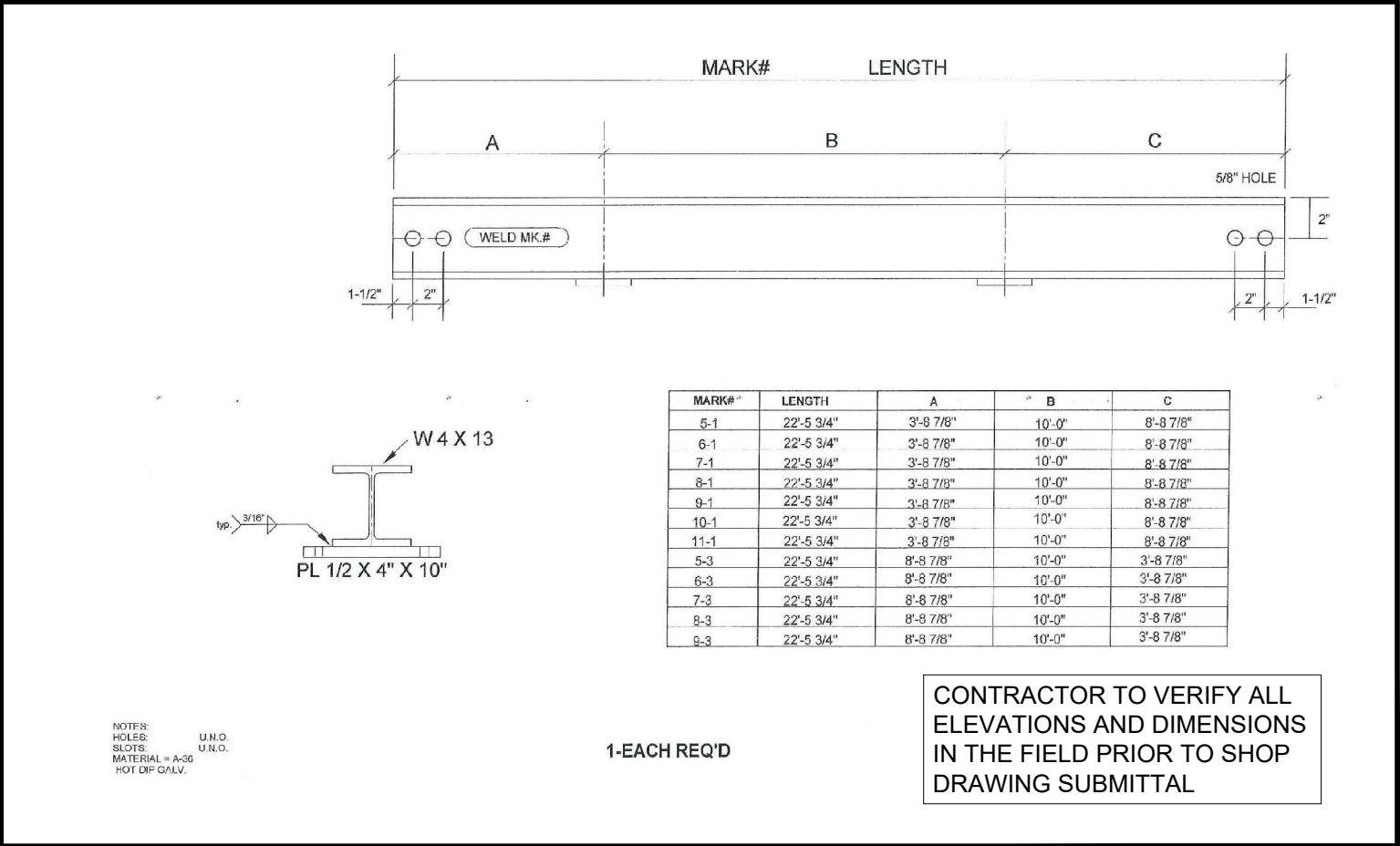
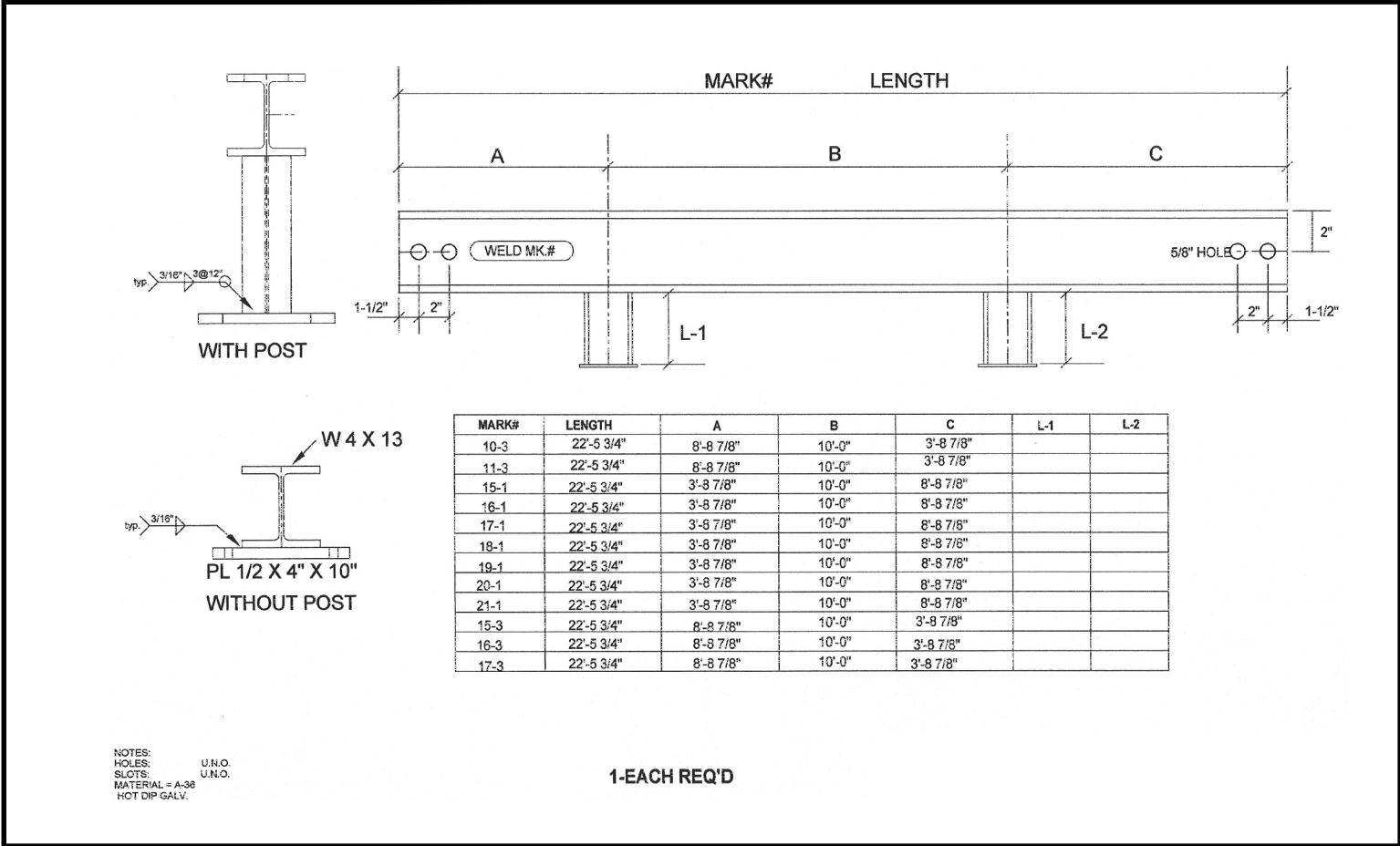
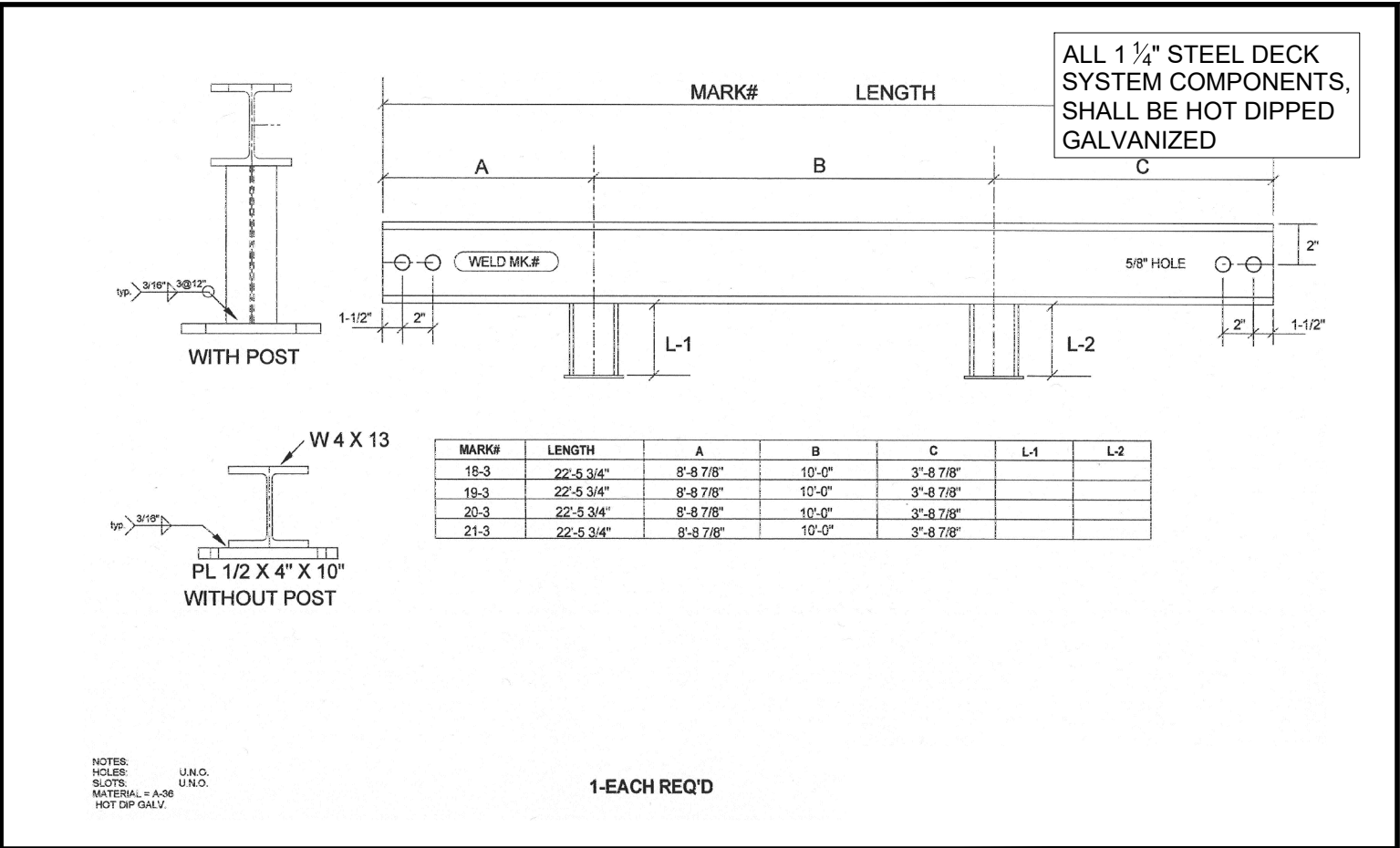
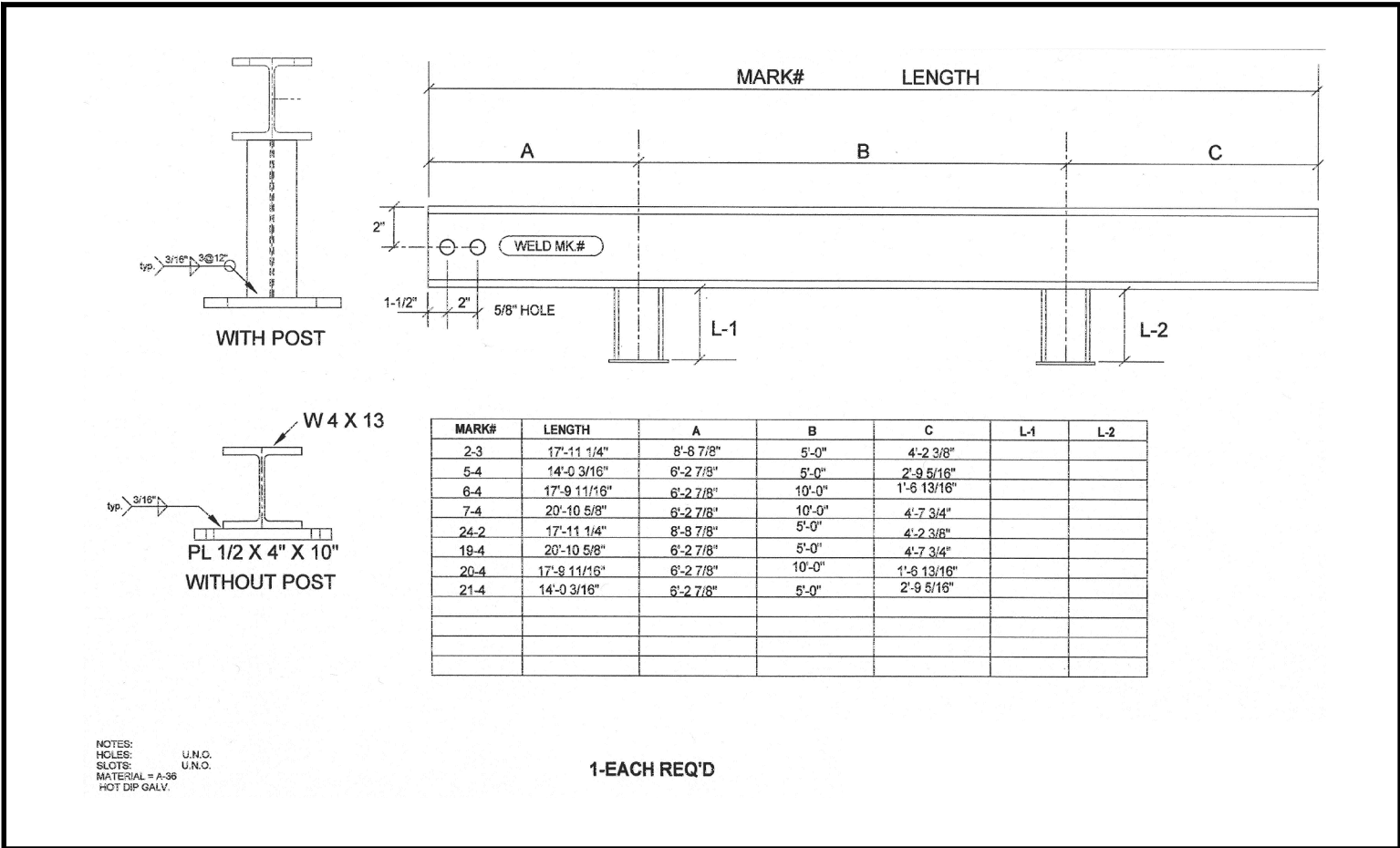
COPYRIGHT © MORRISON-MAIERLE, INC., 2019

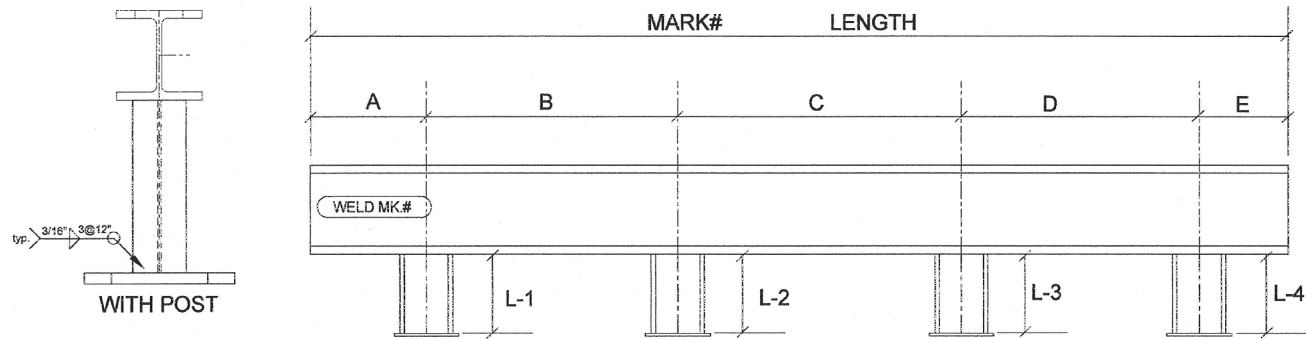


DRAWN BY: BJD
DSGN. BY: TFO
APPR. BY: TFO
DATE: 07/2019
Q.C. REVIEW
BY: _____
DATE: _____

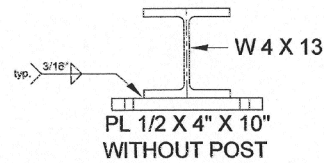
KENAI	ALASKA REGIONAL FIRE TRAINING CENTER TRAINING EQUIPMENT REHABILITATION	ALASKA
	SPILL FIRE TRAINER GRATING SUPPORT DETAILS	

PROJECT NUMBER 2950/042
SHEET NUMBER 16
DRAWING NUMBER SG-4

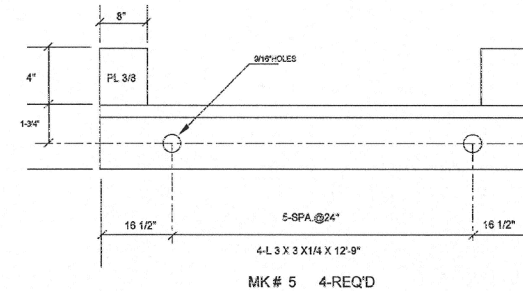
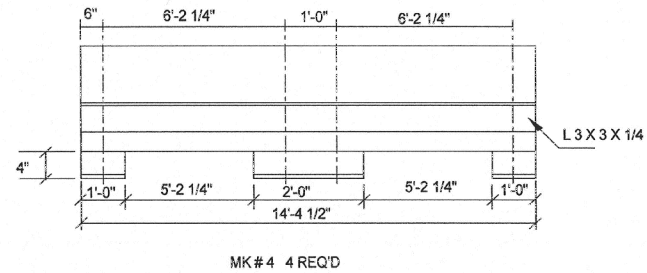
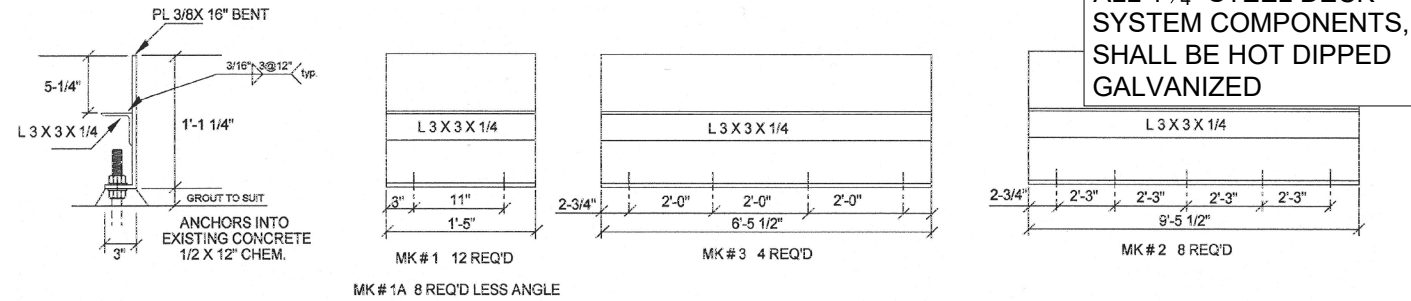




MARK#	LENGTH	A	B	C	D	E	L-1	L-2	L-3	L-4
12	34'-7 15/16"	2'-2 7/16"	10'-0"	10'-0"	12'-0"	5 1/2"				
13	31'-4 1/8"	2'-5"	10'-0"	10'-0"	7'-11 1/8"	1'-0"				
12-2	34'-7 15/16"	5 1/2"	12'-0"	10'-0"	10'-0"	2'-2 7/16"				
13-2	31'-4 1/8"	1'-0"	7'-11 1/8"	10'-0"	10'-0"	2'-5"				
14	34'-7 15/16"	2'-2 7/16"	10'-0"	10'-0"	12'-0"	5 1/2"				
14-2	34'-7 15/16"	5 1/2"	12'-0"	10'-0"	10'-0"	2'-2 7/16"				



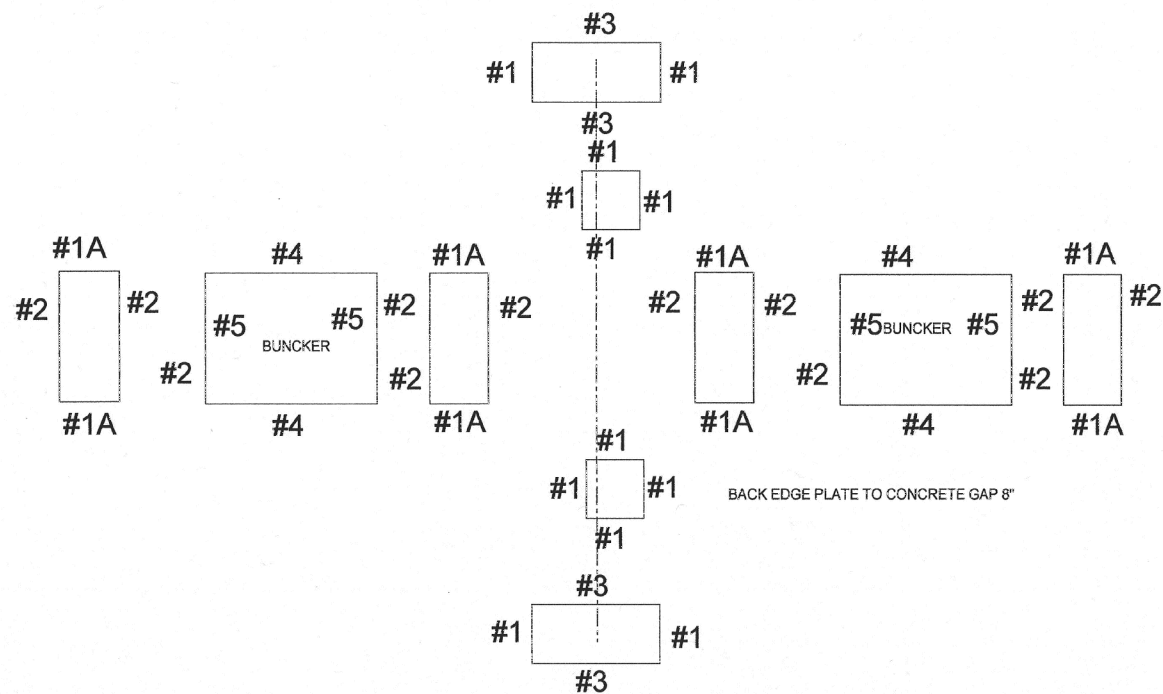
NOTES:
HOLES: U.N.O.
SLOTS: U.N.O.
MATERIAL = A-36
HOT DIP GALV.



SEE DRAWING #12 FOR ERECTION LOCATION
SEE DRAWING #E2 FOR DIMENSIONS

HOLES: U.N.O.
SLOTS: U.N.O.
MATERIAL = A-36
HOT DIP GALV.

ANCHORS INTO
EXISTING CONCRETE
1/2 X 8" CHEM.



BACK EDGE PLATE TO CONCRETE GAP 8"

SEE DWG #11 DET. OF CURBING

HOLES: U.N.O.
SLOTS: U.N.O.
MATERIAL = A-36
HOT DIP GALV.

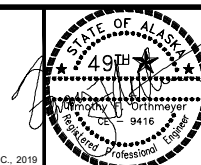
CONTRACTOR TO VERIFY ALL
ELEVATIONS AND DIMENSIONS
IN THE FIELD PRIOR TO SHOP
DRAWING SUBMITTAL

NO.	DESCRIPTION	BY	DATE
1	VERIFIED SCALE		
2	THESE PRINTS MAY BE REDUCED. LINE BELOW MEASURES ONE INCH ON ORIGINAL DRAWING.		
3	MODIFY SCALE ACCORDINGLY!		

**Morrison
Maierle**
engineers • surveyors • planners • scientists

1 Engineering Place
Helena, MT 59602
406.442.3050
www.m-m.net

COPYRIGHT © MORRISON-MAIERLE, INC., 2019



DRAWN BY: BJD
DSGN. BY: TFO
APPR. BY: TFO
DATE: 07/2019
Q.C. REVIEW
BY: _____
DATE: _____

KENAI

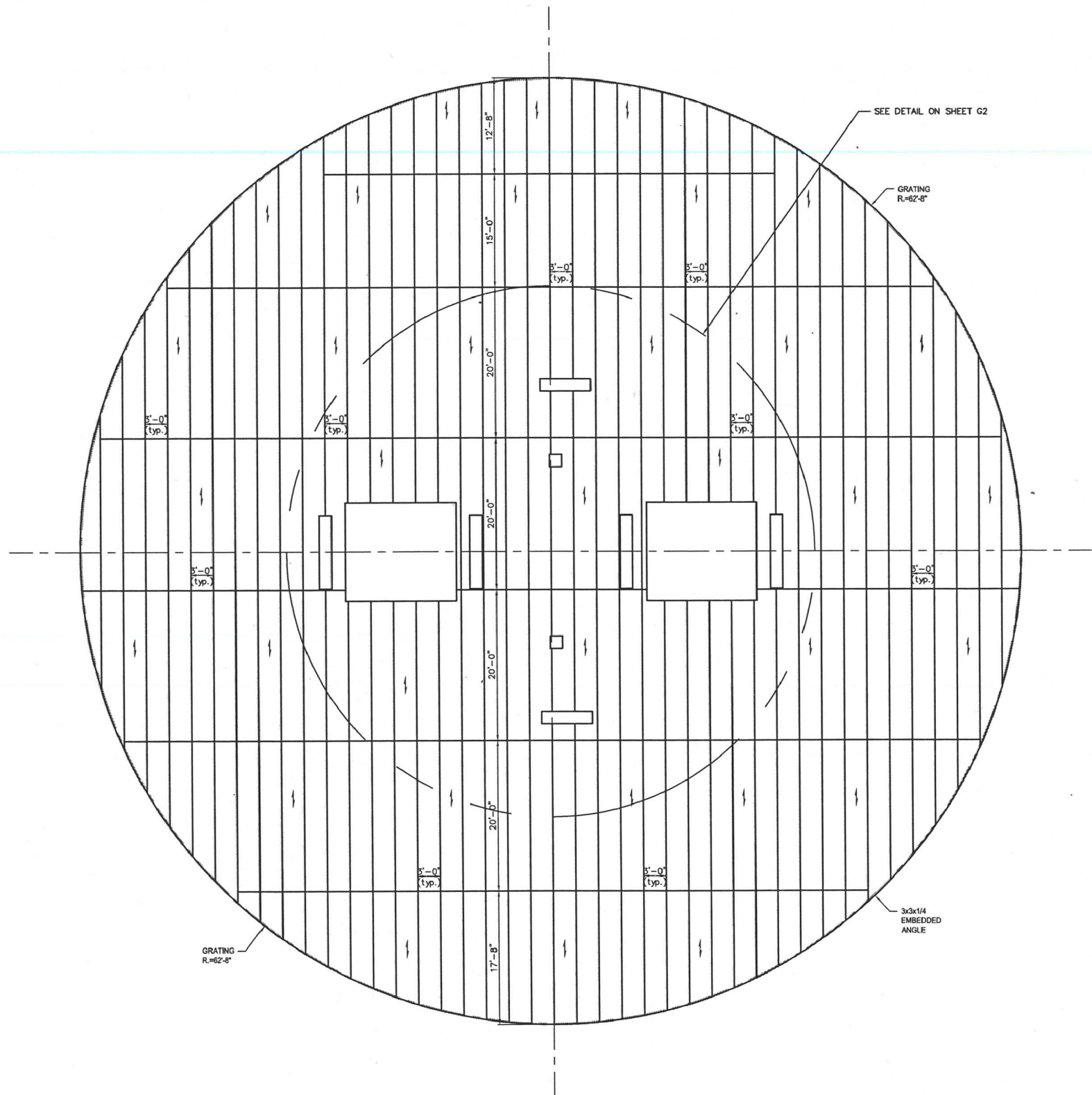
ALASKA REGIONAL FIRE TRAINING CENTER
TRAINING EQUIPMENT REHABILITATION

ALASKA

SPILL FIRE TRAINER GRATING SUPPORT DETAILS

PROJECT NUMBER
2950/042
SHEET NUMBER
18
DRAWING NUMBER
SG-6

ALL 1 1/4" STEEL DECK
SYSTEM COMPONENTS,
SHALL BE HOT DIPPED
GALVANIZED



CONTRACTOR TO VERIFY ALL
ELEVATIONS AND DIMENSIONS
IN THE FIELD PRIOR TO SHOP
DRAWING SUBMITTAL

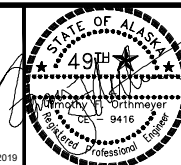
REVISIONS			
NO.	DESCRIPTION	BY	DATE

VERIFY SCALE!
THESE PRINTS MAY BE REDUCED.
LINE BELOW MEASURES ONE INCH
ON ORIGINAL DRAWING.
MODIFY SCALE ACCORDINGLY!



1 Engineering Place
Helena, MT 59602
406.442.3050
www.m-m.net

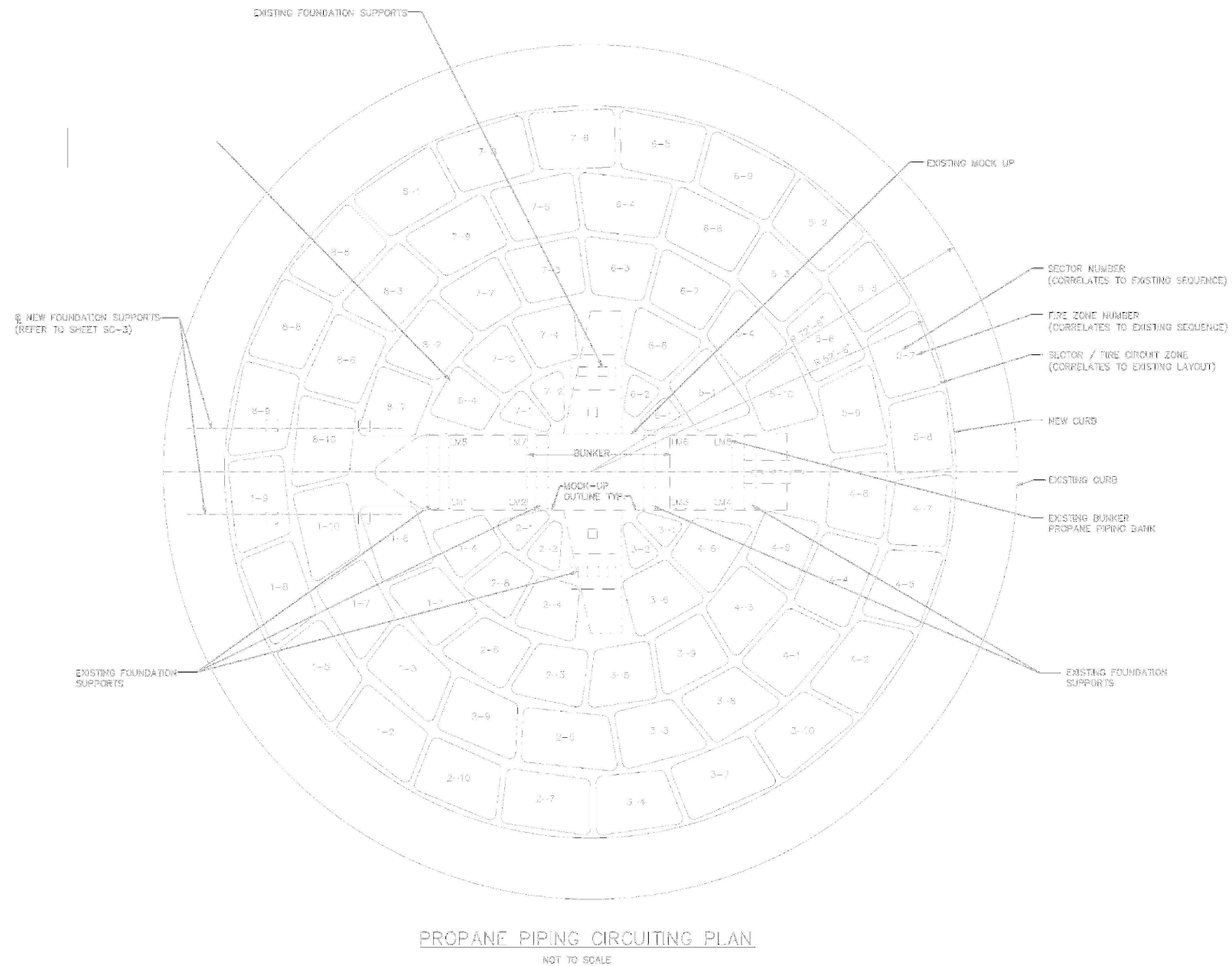
COPYRIGHT © MORRISON-MAIERLE, INC., 2019



DRAWN BY: BJD
DSGN. BY: TFO
APPR. BY: TFO
DATE: 07/2019
Q.C. REVIEW
BY: _____
DATE: _____

KENAI	ALASKA REGIONAL FIRE TRAINING CENTER TRAINING EQUIPMENT REHABILITATION	
	ALASKA	
	FIRE PIT GRATING PLAN	

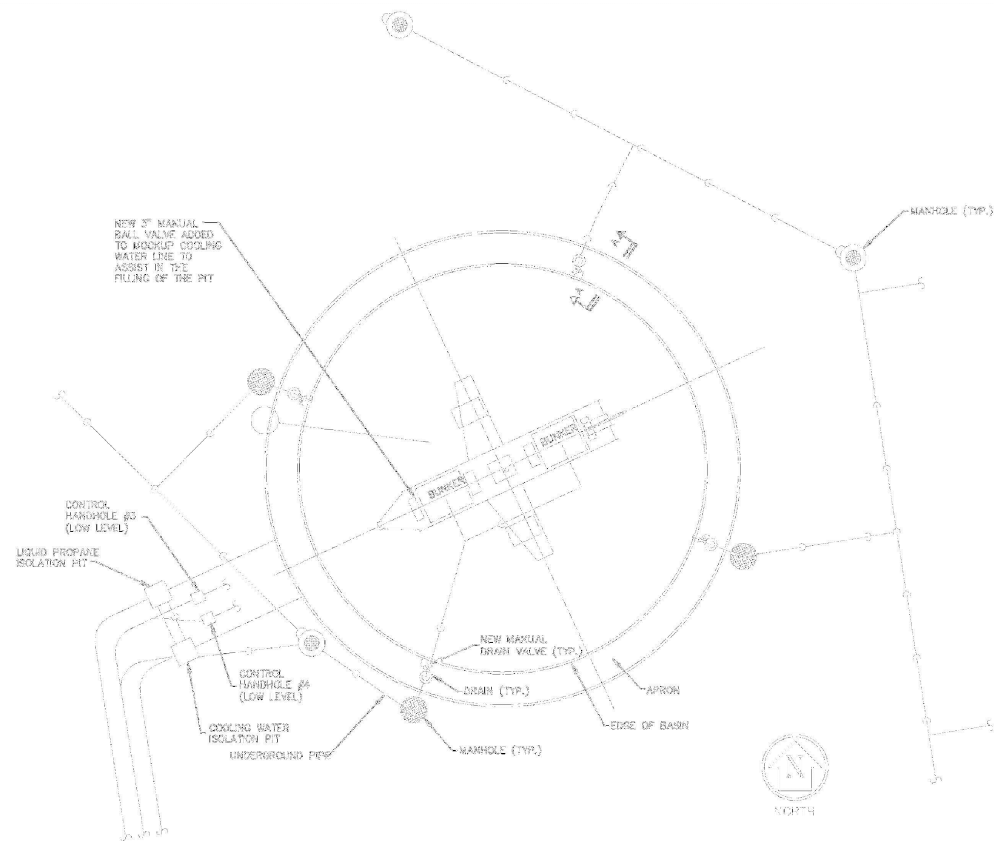
PROJECT NUMBER 2950/042
SHEET NUMBER 19
DRAWING NUMBER SG-7



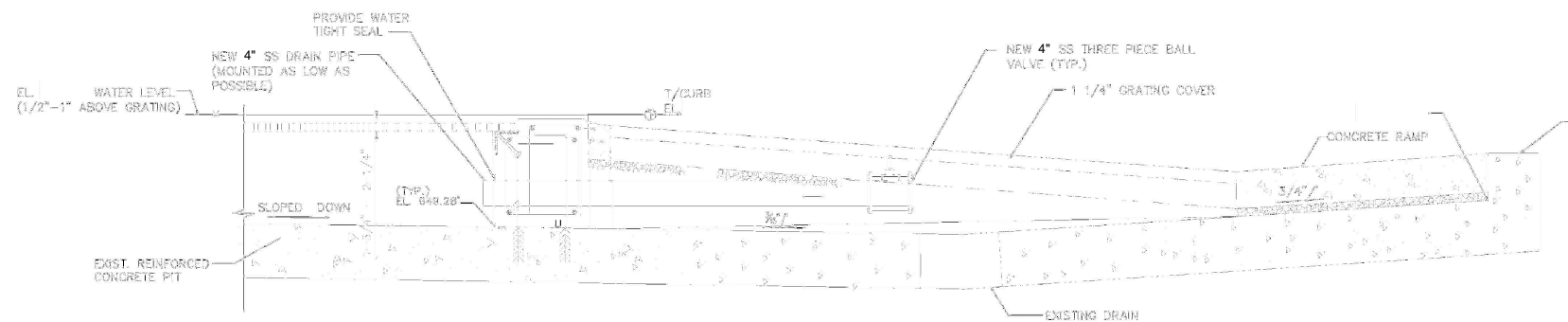
- NOTE:
1. PIPING DISTRIBUTION PLAN (78 CIRCUIT ZONES) IS DEVELOPED SIMILARLY FROM THE EXISTING CIRCUIT ZONE PLAN.
 2. NEW 1/2" ROUND SCH.40 STAINLESS STEEL PIPING TO BE LAD, SECURED, AND DEVELOPED PER STANDARD DETAIL LAYOUT - APPROX. 100' PER CIRCUIT.

CONTRACTOR TO VERIFY ALL ELEVATIONS AND DIMENSIONS IN THE FIELD PRIOR TO SHOP DRAWING SUBMITTAL

<p>VERIFY SCALE!</p> <p>THESE PRINTS MAY BE REDUCED. LINE BELOW MEASURES ONE INCH ON ORIGINAL DRAWING.</p> <p>MODIFY SCALE ACCORDINGLY!</p>	REVISIONS				<p>engineers • surveyors • planners • scientists</p>	<p>1 Engineering Place Helena, MT 59602</p> <p>406.442.3050</p> <p>www.m-m.net</p>		<p>DRAWN BY: BJD</p> <p>DSGN. BY: TFO</p> <p>APPR. BY: TFO</p> <p>DATE: 07/2019</p> <p>Q.C. REVIEW BY: _____</p> <p>DATE: _____</p>	<p>ALASKA REGIONAL FIRE TRAINING CENTER TRAINING EQUIPMENT REHABILITATION</p> <p>KENAI ALASKA</p> <p>SPILL FIRE TRAINER PROPANE PIPING CIRCUITING</p>	<p>PROJECT NUMBER 2950/042</p>
	NO.	DESCRIPTION	BY	DATE						<p>SHEET NUMBER 20</p> <p>DRAWING NUMBER M-1</p>




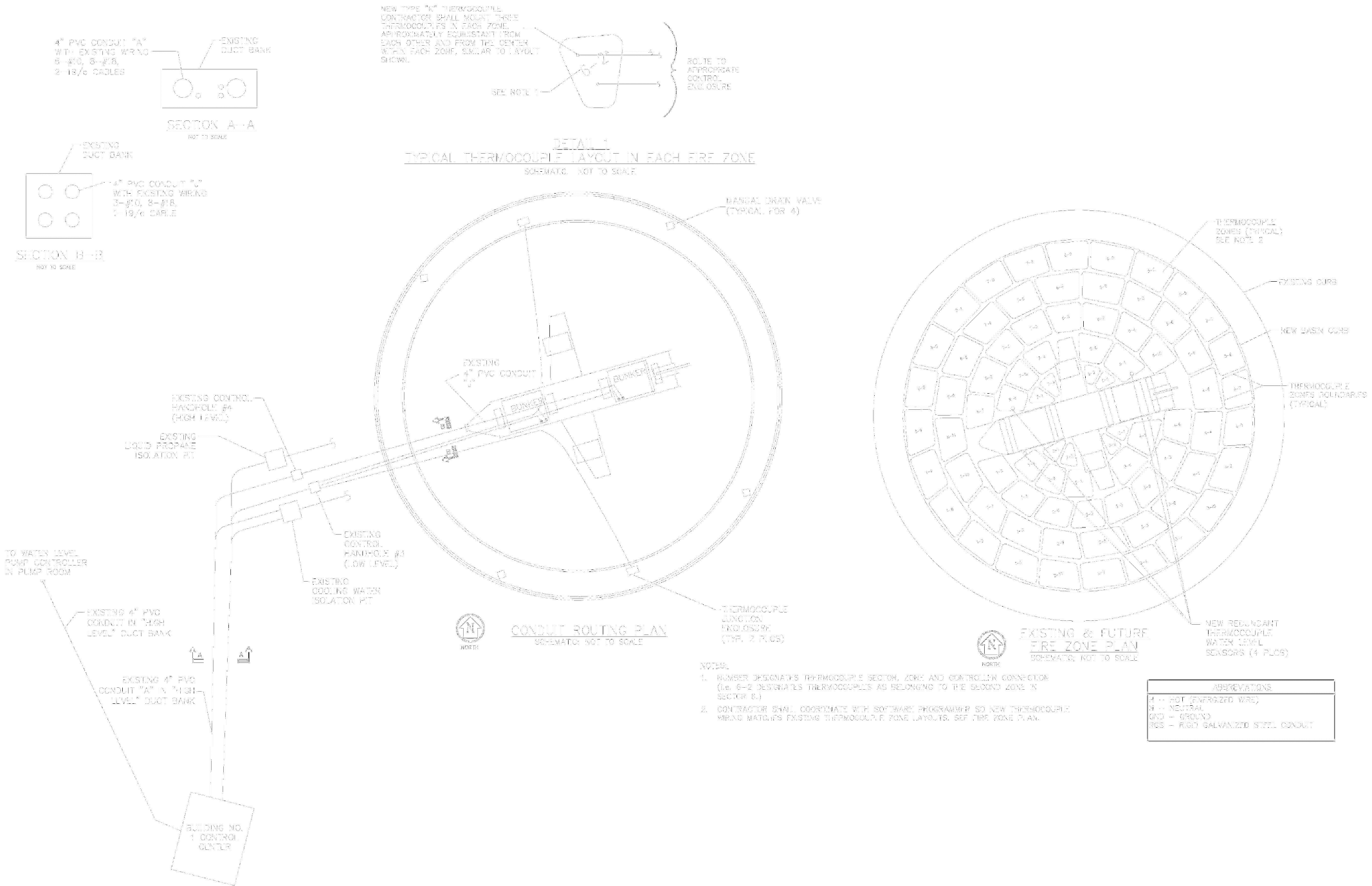
EXISTING DRAINAGE PIPING PLAN
NOT TO SCALE



SECTION A-A
NOT TO SCALE

CONTRACTOR TO VERIFY ALL
ELEVATIONS AND DIMENSIONS
IN THE FIELD PRIOR TO SHOP
DRAWING SUBMITTAL

<p>VERIFY SCALE!</p> <p>THESE PRINTS MAY BE REDUCED. LINE BELOW MEASURES ONE INCH ON ORIGINAL DRAWING.</p> <p>MODIFY SCALE ACCORDINGLY!</p>	REVISIONS				 <p>1 Engineering Place Helena, MT 59602 406.442.3050 www.m-m.net</p> <p>49th STATE OF ALASKA Professional Engineer Morrison Maierle</p>	<p>DRAWN BY: BJD</p> <p>DSGN. BY: TFO</p> <p>APPR. BY: TFO</p> <p>DATE: 07/2019</p> <p>Q.C. REVIEW</p> <p>BY: _____</p> <p>DATE: _____</p>	<p>ALASKA REGIONAL FIRE TRAINING CENTER TRAINING EQUIPMENT REHABILITATION</p> <p>KENAI ALASKA</p> <p>SPILL FIRE TRAINER DRAINAGE PIPING PLAN</p>	<p>PROJECT NUMBER 2950/042</p>
	NO.	DESCRIPTION	BY	DATE				<p>SHEET NUMBER 21</p>
								<p>DRAWING NUMBER M-3</p>



CONTRACTOR TO VERIFY ALL ELEVATIONS AND DIMENSIONS IN THE FIELD PRIOR TO SHOP DRAWING SUBMITTAL

REVISIONS			
NO.	DESCRIPTION	BY	DATE

Morrison Maierle
engineers • surveyors • planners • scientists

1 Engineering Place
Helena, MT 59602
406.442.3050
www.m-m.net

COPYRIGHT © MORRISON-MAIERLE, INC., 2019

STATE OF ALASKA
49th
Professional Engineer
Morrison Maierle

DRAWN BY: BJD
DSGN. BY: TFO
APPR. BY: TFO
DATE: 07/2019
Q.C. REVIEW BY: DATE:

ALASKA REGIONAL FIRE TRAINING CENTER
TRAINING EQUIPMENT REHABILITATION
KENAI ALASKA

SPILL FIRE TRAINER CONDUIT ROUTING AND FIRE ZONE PLANS AND DETAIL

PROJECT NUMBER
2950/042
SHEET NUMBER
22
DRAWING NUMBER
E-1