

# **2009**

## **Kenai River Dipnet Fishery**



**July 10 - 31**

## Table of Contents

2009 Dipnet Report Summary . . . . .	1
2009 Police Dipnet Report . . . . .	2-7
Seasonal Employment Officer Summary . . . . .	8-17
Parks & Recreation Summary . . . . .	18-21
Public Works Summary . . . . .	22-24
Finance Department Summary . . . . .	25-26
Revenue and Expenditure Summary . . . . .	27
Revenue Summary . . . . .	28
Expenditure Summary . . . . .	29-30



# KENAI POLICE DEPARTMENT

107 SOUTH WILLOW STREET KENAI, AK 99611

Telephone (907) 283-7879

Fax (907) 283-2267



**To:** Rick Koch, City Manager

**From:** Gus Sandahl, Police Chief

**Date:** September 30, 2009

**Re:** 2009 Dipnet Report Summary

Enclosed is the City of Kenai's annual Dipnet Report for 2009, with reports from police, parks, public works, and finance. The report highlights the activities, expenditures, and observations of the City departments that have significant involvement with the annual personal use dipnet fishery at/near the mouth of the Kenai River. For the 2009 dipnet fishery, the City had total revenues of \$254,962 and total expenditures of \$211,754.52.

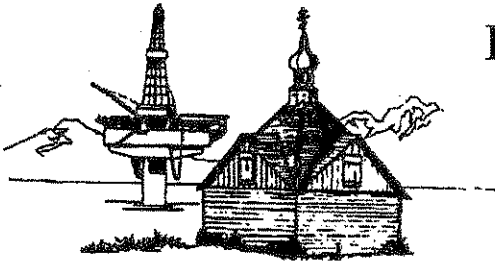
City departments saw an overall increase in expenditures for 2009. The police department experienced a decrease in expenditures, primarily due to fewer overtime shifts over the previous year, and the police command staff was able to spend less administrative time on dipnet-related tasks. Parks and recreation had an increase in expenditures, largely due to the installation of permanent fencing on the North beach. The parks director spent considerable time applying for a grant to fund \$40,000 in permanent fencing on the North beach. This successful grant award, combined with parks employees installing the fencing, greatly helped in minimizing the City's financial outlay. Public works had an increase in expenditures mostly due to three additional projects over the previous year: building and installing informational signs, adding gravel to the South beach Cannery Road entrance, and placing concrete fire rings and removing old dock planks. The finance department had an increase in expenditures, due to increased staff time.

The police department experienced an increase in calls for service, largely due to expanded, and more diligent, cash pick-ups. Tempers seemed to flare more on the first busy weekend, on July 18<sup>th</sup> and 19<sup>th</sup>, when there were three reported fights and/or assaults, all on the North beach.

A local setnet fisherman, who accesses the beach from S. Spruce, gave the City positive feedback and praise for the S. Spruce gravel extension onto the beach, and also for the shack workers who allowed his vehicles to expeditiously enter the beach.

City departments have initiated discussions about dipnet-related vendors. One food vendor parked a small bus briefly on the North beach, but then left the area after being advised of a city licensing requirement. The City should consider developing a concessionaire plan, to include: parking location, fees, and quantity of vendors allowed.

Overall, the City departments felt the dipnet fishery was successful, with a low number of significant incidents given the thousands of people who participated from around the State of Alaska.



# KENAI POLICE DEPARTMENT

107 SOUTH WILLOW STREET KENAI, AK 99611

Telephone (907) 283-7879

Fax (907) 283-2267

TO: Rick Koch, City Manager  
FM: Lt. Kim Wannamaker  
THRU: Gus Sandahl, Chief of Police  
RE: 2009 Kenai River Personal Use Dipnet Fishery

September 8, 2009

The Annual Dipnet Report is presented for your review. It includes reports from the Police, Public Works, Finance, and Parks & Recreation Departments. You will find a summary overview of Police Department activity specific to the Kenai River Dipnet Fishery to include observations, statistics, problems encountered, and suggestions for improvement for 2010. The Seasonal Enforcement Officer report is also attached.

The Fishery opened at 6a on Friday, 7-10-09, and closed at 11p on Friday, 7-31-09. There were no emergency openings, extensions, or closures this year; it remained a 6a-11p event as it did last year.

City departments prepared for anticipated & historical challenges, collaborated with planning & management strategies, with this year resulting in an effective overall management of the 3-week fishery.

The greatest managerial challenge this season, similar to last year, was parking in the South Spruce/North Beach area, parking issues at the City Dock, and an effective camping permit process.

Four Seasonal Enforcement Officers (SEOs) spent the majority of their July shifts engaged in Fishery related activity; all four SEOs worked as SEOs in 2008, so they were familiar with all aspects of the fishery and needed little remedial training prior to the season. Significant issues SEOs dealt with this year were parking and vehicle operations on the North Beach area, and ATV concerns on the South Beach.

The Police Department handled 141 Fishery-related calls for service this year (77 of those were handled by SEOs); the majority of the calls for service were cash pick-ups from the four pay shacks, followed by parking complaints and camping issues on the North Beach. Other activity generating Police Department attention involved ATV use (both beaches), parking problems at

the City Dock, litter, and destruction of orange fencing and trampling of vegetated dunes during extreme high tides (North Beach).

One vehicle was impounded this year, for unlawful parking on Bridge Access Road near Boat Launch Road (too close to the intersection/blocking view).

Twenty-five of the 27 citations issued this year were parking related (handicap zone, no permit, no parking zone). Police arrested 2 drunk drivers on the South Beach, one of which was leaving the scene of a Hit & Run collision. Over 300 written warnings were left on windshields for parking violations, with some being followed up with citations. Well over 1000 verbal warnings were issued during day-to-day operations/contacts with Fishery participants, again most of them parking related.

Police also responded to several fights, reports of theft, and a South Beach camper with a chainsaw "getting firewood" on private property off Cannery Road. Police and USCG investigated a report of a commercial gillnetter boat intentionally swamping dipnetters along the North shore at the mouth of the river; the investigation concluded with USCG interaction with the F/V's captain, and no criminal charges.

The USCG patrolled the boat-dipping area with a State Parks Ranger during July 16-28, made vessel boardings and enforced watercraft safety regulations. They also were immediately present and assisted KPD/KFD personnel when a 19' boat capsized, spilling the occupants into the river; all 4 boaters were rescued.

There were three significant EMS responses, two on the North Beach – one man suffered a fatal heart attack, another man suffered hypothermia; and the capsized boat. The hypothermic man chose to ride out an extreme high tide in his sleeping bag while water flooded his tent. He called 9-1-1 later that morning from his tent.

Of the 337 hours worked by SEOs on dipnet activity, the majority was spent on the North Beach dealing with parking, camping, campfires, and ATV use. Police Officers spent 42 overtime hours on dedicated Fishery-related activity on the beaches, in addition to logging 64 hours handling 64 Fishery-related calls for service. SEOs and Officers patrolled the beaches via ATV and on rare occasion, a Department SUV. The SUV was used when both ATVs were temporarily out-of-service and prompt access to the far reaches of the beach was necessary.

Alaska Wildlife Troopers (AWT) were discreetly present during the Fishery, on the North Beach and, to a greater extent, at the City Dock. The local AWT Detachment lent us a new Polaris Ranger 6-wheeler this year for use during the Fishery; this ATV was an exceptional addition to our 4-wheeler and greatly enhanced beach patrols and moving about the long stretches of beach.

Four pay shacks were placed at the same locations as the last 2 years, and one (S. Spruce) sustained minor damage after an RV drove into it while pulling up to the pay window.

Total Kenai PD expenses for the 2009 season .....	<b>\$19,193</b>
Police Officers' pay (64 hrs + 42 dedicated OT hrs)	\$1995 + 2024
SEO pay (337 hrs, including 4 hrs OT)	\$5203 + 94
Pre & Post season Admin Work (Chief, Lt., Sgts)	
➤ Field Visits, Prep (Chief: 3.5, Lt: 4)	
➤ KPD Mtngs (Chief: 4, Lt: 4, Sgts: 7)	
➤ Mtngs w/other Depts & Agencies (Chief: 2, Lt: 5)	
➤ Deskwork, Rpts (Chief: 3, Lt: 10, Sgts: 4)	
➤ <b>TOTAL Admin</b> (Chief: 12.5hr, Lt: 20hr, Sgts: 11hr)	\$532 + 825 + 420
Vehicle (Full-size pickup equivalent rental – July)	\$3100
ATV (purchase cost divided by 10 yr useful life) x2*	\$2000
Fuel**	\$3000

This season saw a decrease of 23 “on shift” hours and a decrease of 84 dedicated OT hours from Officers’ 2008 total time, and 16.5 fewer Administrative hours. The SEOs also spent 73 fewer hours this season than 2008. The decrease in dedicated OT was a direct result of things going so smoothly the extra Officer presence simply wasn’t necessary, and several Officers’ anticipated/pre-scheduled OT shifts were cancelled.

The “Salmon Frenzy” missionary group was present again this season, with 120 volunteers on the beach(es) the 2<sup>nd</sup> and 3<sup>rd</sup> weekends (Fri-Sun). Their presence, which included several individuals from last year, contributed significantly to smoother operations regarding traffic control, traffic congestion, and parking.

\*The Kenai PD has one 4-wheeler, and based on a 10-yr useful life has a cost of \$700 per year. For the 2009 Fishery AWT loaned us a new Polaris 6x6 which was needed for dipnet-related beach patrol, enforcement, & rescue transportation. If this 6x6 was not loaned to us, the City would need to acquire/purchase a similar ATV at a cost of \$1300/year (useful life 10 yrs).

\*\*Patrol cars/SUV, the Dept. pickup, and two ATVs, were equipment expenditures for the fishery. Costs included reflect fuel consumption relative to driving to/from the 4 pay shacks, City Hall, police station, beach access points, Kenai Ave., and up & down the N and S beaches, and idling during stops at these locations. Fuel average was \$3.15/gal regular unleaded gasoline.

## 2009 Observations

Signage information at the North Beach access was greatly improved with the erection of the large color map detailing where folks could drive, park, camp, have fires, and where they couldn’t.

Public information was available via printed brochures, radio and newspapers, ADFG and City of Kenai web sites. Information included: Fishery dates/times, fees, Dunes Protection, beach

access, parking/camping/campfires locations, ATV & off-road vehicle use, and tide tables. Incredibly, many participants, when contacted, denied knowledge of readily available information.

The additional Handicap Parking signs plus fresh blue paint on the cement barrier helped make the spots more visible to those needing them and those who shouldn't. The HCP Parking area on the north side of the S. Spruce parking lot was not so clearly marked and created confusion and the dismissal of one citation due to being poorly marked.

The S. Spruce "City Vehicles Only" parking area was not clearly marked which contributed to more parking confusion. Those spots are used primarily by Police which can, in all reality, park anywhere while down there on calls. If there is a genuine need for dedicated City Vehicles Only parking, it might be relocated thereby creating another 2-3 general parking spots.

Last year there were at least two "2-Hr Parking" signs on the block wall at the end of S. Forest Drive; this year there were none until the end of the season and that area became heavily congested as the season progressed; those signs lasted very briefly, until they were ruined by rain.

Parking and camping fees were \$15, the same as last year, with cash or check payment options at the pay shacks and/or iron rangers. Many complaints were received about the 12-hour payment period, with people suggesting it be lengthened to a full day (24 hrs).

Non-compliance with camping fees and posting of camping permits was an enforcement issue due to poor communication and/or misunderstanding of requirements; the SEOs issued many warnings to gain compliance. Many campers claimed they were not informed of the camping fee by shack attendants.

Parking at the City Dock was jam-packed on the busy tides. The majority of painted parking spots accommodated 3-deep (truck/trailer) parking, which led to vehicles in the middle getting boxed in, which led to trailers being moved, police being called "to move him out of my way" (unoccupied, locked trucks), and nasty windshield notes.

Overflow parking at the Little League fields went smoothly due to the anticipated need, and pre-planned staffing & traffic control on S. Spruce to handle the increased traffic on the 2<sup>nd</sup> & 3<sup>rd</sup> weekends.

The 6x6 posts & chain fencing on the N. Beach created an excellent barrier for protecting the dunes and establishing a border for tents & campfires. The orange fencing, however, was again cut, trampled, and moved by those wishing to accommodate their own desires for space.

The Port-A-Potties were well maintained and serviced this season, with little-to-no complaints expressed.

Dumpsters filled quickly on busy days and when overflowing, people just piled trash higher or beside them. This created a problem for servicing, as the garbage truck driver(s) would not empty dumpsters with trash piled on the lids or trash piled beside the dumpsters. Litter & trash is a significant issue during the Fishery, and management strategy should continue addressing this.

The presence of four SEOs again this year contributed significantly to smooth operations. They were a constant presence to answer questions, give direction, monitor & enforce parking and traffic flow, and provide immediate assistance with various problems.

The additional ATV was a valuable resource for traversing the beaches easily & quickly. The larger 6x6 Ranger with cargo area proved to be a terrific asset with greater functionality than the 4wheeler. It was an unexpected loaner from AWT this year, as we'd requested to borrow a 4wheeler as in years past. This Polaris Ranger may not be available from them next year.

The Salmon Frenzy volunteers were a tremendous help on both beaches and the City Dock, with most of their people on the North Beach. Their presence provided resources to Dippers and non-dippers, children, traffic control, and parking monitoring & directing. They also provided free hotdogs, hot chocolate, activities for children, and a first-aid station.

## **Recommendations for 2010**

### Signage

1. Set a line of "No Vehicles Beyond This Point" signs along the Left side of S. Spruce extended, for clear direction regarding motor vehicles between S. Spruce/Mouth of the River. The two there this year, plus their close-in location, were not very visible nor in a strategic place.
2. Determine whether there is a need for dedicated *City Vehicles Only* parking and confirm specific location.
3. Affix durable, weather-resistant "2-Hour Parking" signs to the wall at the end of S. Forest Drive.
4. Attach a dry-erase board to the pay shacks for late-notice messages, fishing updates, extreme high tide times, and other general information to the public.

### Fencing

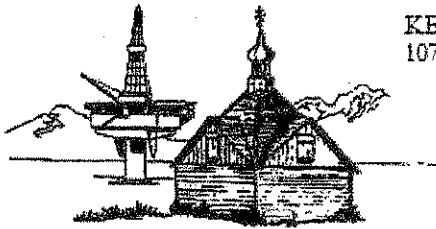
Extend post/chain fencing beyond the end of Kenai Ave, or put nothing there. The orange fencing merely gets moved, trampled, or vandalized and because it's unmarked private property there is little KPD can do other than spend a lot of time telling people to move their stuff, stay out of the grass, and P&R retrieve/repair orange fencing.

### Camping

1. Provide clear weatherproof bags for people to affix to their tents/tarps. Include fasteners that are easy to use and don't puncture fabric.
2. Provide pay shack workers with written guidelines/instructions for campers.
3. Establish a written definition of "camping".

### Security & Enforcement

1. Continue with four Seasonal Enforcement Officers, and anticipate & schedule dedicated Dipnet Officer shifts (easier to cancel if not necessary, than to last minute call folks in).
2. Purchase a larger ATV similar to this year's loaner 6x6, due to the greater versatility and multi-function use; MSRP for a similar ATV is roughly \$13,000 with standard equipment. This additional ATV would complement the Department's 5-yr old 4wheeler. A Polaris Ranger XP, smaller than the 6x6, has 4 wheels, a 3-person bench seat and the same size cargo bed as the 6x6; adequately equipped for our use costs between \$11,000 - \$12,000.



KENAI POLICE DEPARTMENT  
107 SOUTH WILLOW STREET KENAI, AK 99611

Telephone (907) 283-7879  
Fax (907) 283-2267

# Memo

**To:** Lt. Wannamaker

**From:** SEOs Caswell, Chilson, Collum, and Semmens

**Date:** 8/4/09

**Re:** 2009 Kenai River Dipnet Fishery

## Introduction

This report includes a summary of Kenai Police Department Seasonal Enforcement Officer activity specific to the dipnet fishery, observations, statistics, problems encountered, and thoughts for improvement for the 2010 season.

The fishery opened on Friday, July 10<sup>th</sup> at 0600 and closed on Friday, July 31 at 2300 hours. There were no emergency openings or closings called for by the Alaska Department of Fish and Game during the 2009 dipnet fishery.

This season there were again four Seasonal Officers (SEOs) employed by the Kenai Police Department. The SEOs spent a total of 510 hours working during the dipnet fishery. Out of these, a total of 337 hours were spent for dipnet (time on the beaches, at Kenai City Dock, or performing other dipnet-related duties). The majority of time spent at these locations was handling problems and being a general police presence. The remaining non-dipnet time was spent handling other calls for service such as bike thefts, vandalisms, illegal camping, and ATV complaints, or performing other miscellaneous administrative duties at the police station.

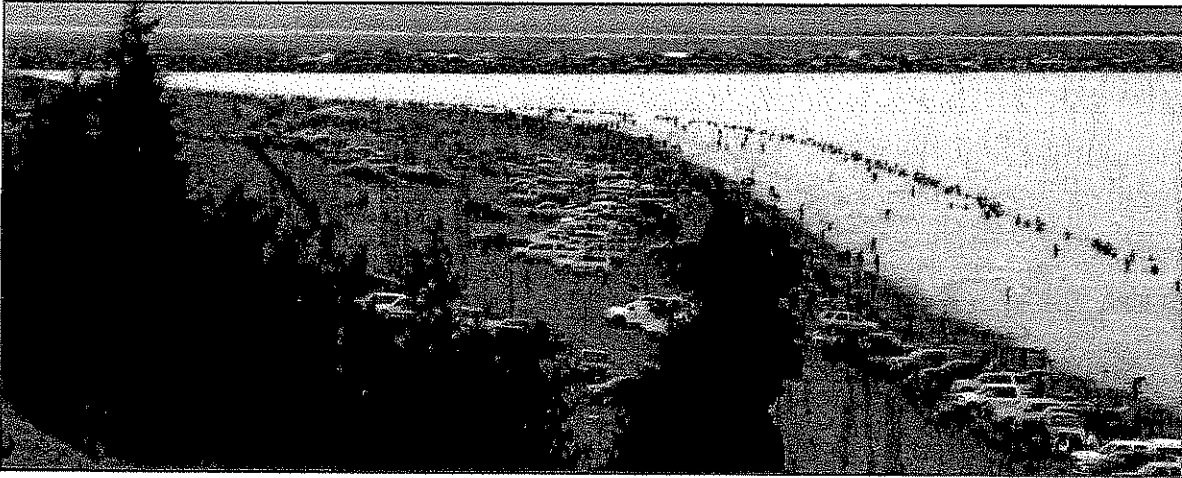
## General Information

Similar to previous years, the 2009 dipnet season started slowly and increased in intensity until its peak a little after a week into the season. The lower parking lot at North beach, the overflow parking at the Little League fields on South Spruce, and parking along South Spruce was completely full by July 18<sup>th</sup>. The South Beach, near the mouth, was also highly saturated by this date. On the 18<sup>th</sup> fishing had picked up slightly, and many people were on the beach; a story written in the Anchorage Daily News and the Peninsula Clarion claiming a huge run of fish was

---

## KENAI POLICE DEPARTMENT

---



probably the major contributing factor of this huge influx. This weekend has been shown to be the busiest weekend of dipnet for the past two years. After this weekend the amount of people began to decline until July 31<sup>st</sup>. By the end of the season the North beach  
*The North and South Beaches during the peak point of the dipnet season.*

parking lot was nearly empty, and yet the fishing continued to be fruitful.

Pay shacks were located at the entrances to all dipnet areas. The shacks were located at N. Beach on South Spruce, the South Beach at Dunes Rd., Old Cannery Rd., and at the City Dock on Boat Launch Rd. In addition to these locations a payment area was again added at the Little League field entrance on busy days for the overflow parking patrons. The shacks were manned from 0545 to 2300 hours. When the shacks were unattended, users paid their fees at iron rangers located next to the pay shacks. Fees were enforced by the shack attendants from 0600-2300 and by the SEOs at other times. Iron Rangers were emptied daily. Prices for parking and camping remained the same as last year, 15 dollars for parking, and an additional 15 dollars for camping. These prices provided a 12 hour permit. Similar to last year SEOs received many complaints in regards to the pricing.

SEOs received 77 dipnet-related calls for service during the 2009 dipnet fishery. The most prominent calls received were for cash pickups from the various pay shacks. SEOs received numerous complaints about parking on Kenai Ave. and calls relating to ATV violations. The



---

## KENAI POLICE DEPARTMENT

---

majority of complaints came from the North Beach where the SEOs spent most of their time. SEOs patrolled the beaches using ATVs. In addition to the police department owned 4-Wheeler, Alaska Wildlife Troopers lent KPD a new Polaris Ranger 6-Wheeler. This 6-Wheeler proved to be an invaluable asset on the beaches this year. Its bed allowed us to carry more duty gear and extra equipment such as gas and traffic cones. The most important feature of this ATV was its multi-person cab. This allowed us to transport more than one officer on busy days, and conduct multi-officer patrols. Approximately halfway through the dipnet season, we received a 911 call for a man going hypothermic on the beach; because of the Ranger's cab, once the man was located, we were able to shuttle him off of the beach to a waiting ambulance. This would not have been possible with the single person 4-wheeler.

### North Beach

The largest problems encountered by SEOs at the North Beach were parking violations and vehicles to the left of the main entrance. The parking lot at the end of South Spruce was completely full as well as street parking on S. Spruce and the Little League Field overflow parking area. SEOs issued large quantities of written and verbal warnings. On July 18<sup>th</sup> alone over one hundred warning slips were left on vehicles in the lower parking lot for expired parking permits, failure to display parking permits, or other miscellaneous parking infractions. This helped correct the majority of the problem; however, later that day those who had not corrected it were issued citations. A total of 26 citations were issued. 25 of these citations were for parking violations; this includes illegal handicap parking, parking without a permit, and parking in no parking zones. SEOs spent significantly more time warning vehicles that had ventured onto the left side of North beach, about one to five a day, depending on the activity level. Although there were a few signs in the parking lot indicating no vehicles to the left of the beach, there were only two small signs indicating this on the beach. There is a very clear sign that states "NO CAMPING OR FIRES" on the right side of the beach, if a similar large sign was posted on the left stating "NO MOTOR VEHICLES," the problem of ATVs would likely reduce. Also another red sign stating "NO CAMPING" on the right side of the entrance would reduce the amount of camping infractions on this side of the beach. Camping permits were another large problem on the beaches this year. Often when we would pass through the beach checking for permits, it would result in about a third campsites not having them. One day towards the end of the season, every campsite on N. Beach was lacking camping permits due to a parks employee at the booth informing people they did not need permits or that camping was free; this was quickly corrected.

During the second week of the dipnet season extremely high tides forced North beach occupants into the dunes.



---

## KENAI POLICE DEPARTMENT

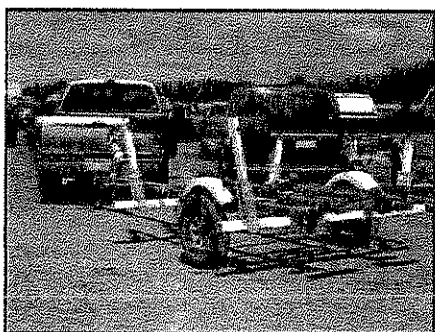
---

Every night the campers would break down the orange fencing and pitch their tents in the safety of the dunes. The next day, SEOs and other officers would have all the campers move their sites out of the dunes, and Kenai City Parks and Recreation would replace the fence only to have the process repeat. After a few days, Parks and Recreation rebuilt the fence further back into the dunes, allowing people to camp in a section of them for the rest of the season.

The Salmon Frenzy volunteers returned to dipnet for the 2009 season. They controlled traffic on Kenai Ave., which greatly helped reduce the amount of traffic jams. They operated hospitality tents on both beaches. These tents provided fish fillet tables, free hotdogs, and hot chocolate. The volunteers also had an inflatable fun jump and other activities for the children of the dipnetters.

### **Kenai City Dock**

The City Dock was very self-maintaining during the dipnet opening. As the season progressed, SEOs received more calls for service at the dock. There were several days that the parking lot, as well as the overflow parking lot, were completely full.



Another issue that was dealt with on multiple occasions at Kenai City Dock, was the issue of boaters having their vehicles blocked in by other vehicles. Due to the fact that many of the parking lanes were about three vehicles deep, often boaters would park their vehicles in the middle of the lanes, only to return to discover other vehicles parked both ends, blocking them in. This was less of a problem during the peak weekend, when Salmon Frenzy volunteers were present at the dock to help regulate traffic.

### **South Beach**

South Beach required far less attention from SEOs. The most common violations were ATV violations and ATV helmet violations. On July 24<sup>th</sup> SEOs responded to a minor vehicle collision between a SUV and an ATV. No citations were issued at South beach. ATV operation in the dunes was not a substantial problem this year.

Salmon Frenzy volunteers operated a hospitality tent for South Beach as well. This tent also served free hotdogs and hot and cold beverages.

---

## KENAI POLICE DEPARTMENT

---

### Miscellaneous

Restrooms at the beaches and boat launch were well maintained this year. On several occasions, someone put rocks and toilet paper in the bathroom at the municipal park, causing it to overflow, but the problem did not continue to occur all season. The port-o-potties at the end of Kenai Avenue were the most highly used of all the restrooms and therefore needed the most maintenance.

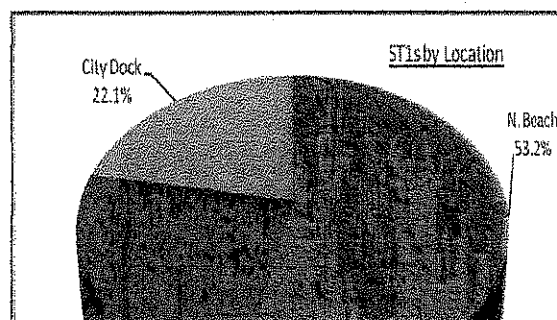
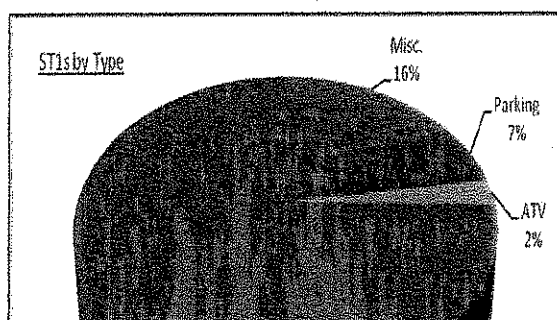
The dumpsters were frequently overflowing. In addition the garbage truck drivers would not empty the dumpsters if there was any refuse on the dumpster lids or around the dumpster itself. This led to trash being left on the ground in the area. Another trash problem came from the new fire rings to the right on the entrance at North beach. People seemed to believe these new fire rings were trash receptacles.

Multiple times throughout the dipnet season, the department 4-Wheeler experienced mechanical issues, and was rendered not usable for beach duties. Aside from one shorted out sensor towards the end of the season in which it had to be returned for repairs, the AWT Ranger was extremely dependable with no issues. During times when the 4-Wheeler was in the shop, the Ranger could not practically be used to access South Beach due to the fact a trailer was needed to haul it. A police Ford Expedition had to be used to access the beaches when ATVs were not available for use due to the fact the new police F250s weight makes it impractical for beach use. Each time a department vehicle was exposed to the beach, SEOs spent time to take it and clean the underbody well with high pressure fresh water.

### Dipnet Fishery Statistics

As previously mentioned SEOs responded to 77 dipnet related calls for service. Each call generated a ST1 report which is used for Police Department documentation. These calls for service were divided among three locations: North beach, South beach, and the Kenai City Dock.

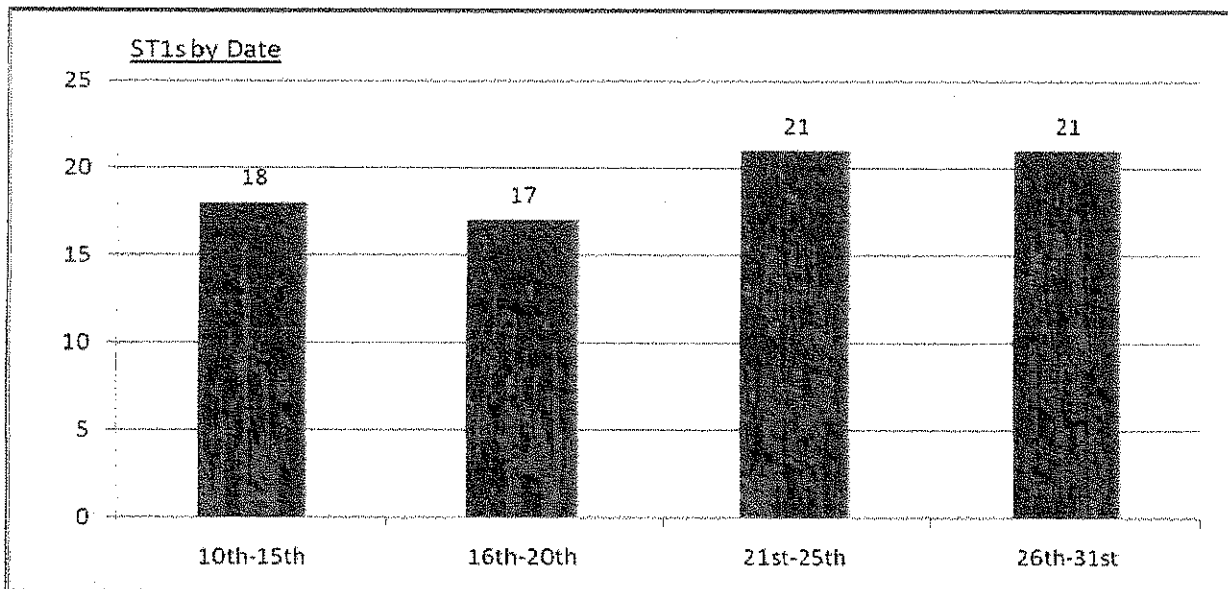
This year the number of ST1s for ATV activity was drastically reduced. Although SEOs contacted many people for illegal camping there were no citizen filed complaints to the Police Department resulting in no ST1s in this category.



---

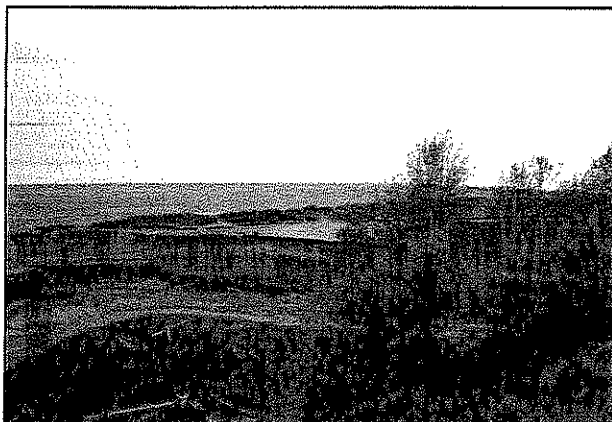
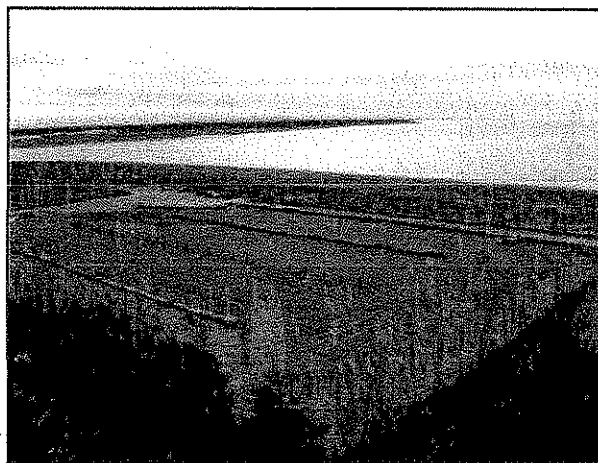
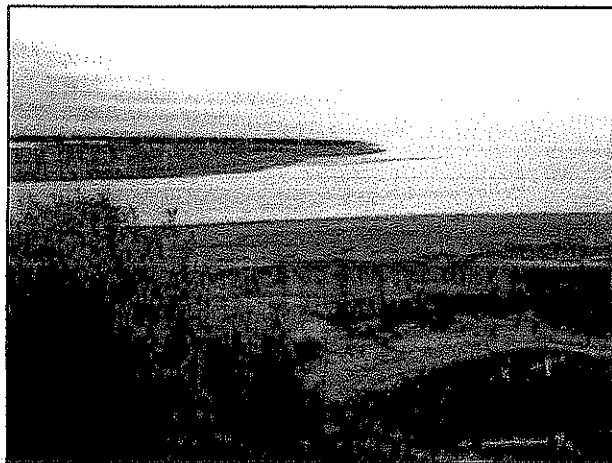
KENAI POLICE DEPARTMENT

---



**Dipnet Fishery Before & After Photos**

*North & South Beaches Prior:*

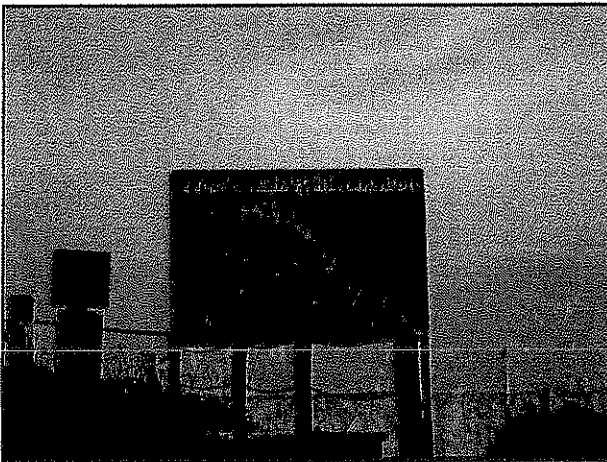
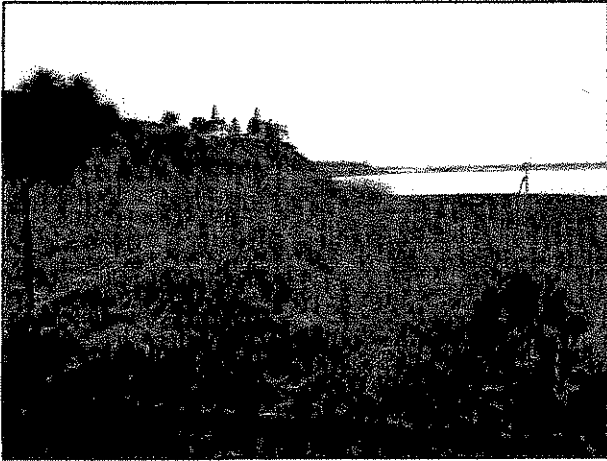


---

KENAI POLICE DEPARTMENT

---

*North & South Beaches After:*



**Observations and Complaints**

- The markings for handicap parking on the southern most portion of the North Beach parking lot have improved considerably since last year. There are more signs and the lines/barriers were repainted. The other section of handicap parking, on the eastern edge of the parking lot, needs some things. For example, a sign on both ends with arrows would be beneficial as well as the grass along the barrier being maintained. One citation was written for this area and was later dropped due to the lack of signage.

---

KENAI POLICE DEPARTMENT

---

- Another problematic area in the North Beach parking lot was the no-parking zone for Kenai City Vehicles only zone. While there are signs posted in the area there are still parking spaces painted on the barriers. This section of the barrier could be painted red to avoid the confusion.
- Parking for maintenance vehicles was another problem SEOs experienced during dipnet. In the past the north side of the barrier on the northern most section on the asphalt was reserved for maintenance vehicles. This was a problem in the past because it is improperly signed. This year temporary signs (paper signs on posts stuck in traffic cones) designated the south side of the same barrier as the maintenance vehicle parking area. These temporary signs did not last long in the rain and wind. The north side of the barrier needs to be the maintenance/city vehicle parking area. It needs to be appropriately signed with permanent signs and painted a bright color, such as yellow or red, to designate it as a no-parking zone for the public.
- The new signs at the North Beach entrance were a great improvement to the area. The color sign that displayed all the camping/fires/ATV rules seemed to cut down on the number of violations occurring on the beach. The same goes for the color sign at the end of South Forest.
- Unfortunately the signs posted as "no motor vehicles past this point" to the left of the North Beach South Spruce entrance were not as numerous as last year. There were only two and they were up close to the fencing. Next year it would be great to have many of these signs in a line down the beach to the water.
- The new wood post and chain fence at North Beach worked great for protecting the dunes. Once the chain was strung there were very little problems concerning the dunes. Prior to dipnet there were some problems with the removal of posts. During dipnet there were no ATVs in the dunes and minor amounts of foot traffic.
- The path from Municipal Park to North Beach lost some posts during dipnet. The posts at the top and bottom of this path were great for cutting down on ATV traffic. Unfortunately these posts were removed by vandals. Perhaps it would be best if these posts were cemented in place to ensure their longevity.
- There were many complaints received from the residents on Toyon Way and South Forest concerning the amount of traffic at the end of South Forest. During peak days, cars would be parked on both sides choking the street and making it difficult for the residents to access their homes; it was less of a problem during the weekdays. Many of these complainants proposed a no parking zone be instated on one side of South Forest. This

---

## KENAI POLICE DEPARTMENT

---

would quickly solve the problem as long as the no parking zone had enough signs, and the curb was painted.

- We received many complaints about people parking for excessive amounts of time at the end of S. Forest. There was a severe lack of two hour parking only signs this year at the end of the street. This problem occurred on all days of the week, not just during peak days.
- The no parking zone on South Spruce generated many parking tickets during this dipnet season. Out of the 26 citations that were issued during the peak of the season, a majority of these were written for parking infractions on S. Spruce. The main concentration of people parking in the no parking zone parked near the "entrance only" sign to the Catholic Church. It may be prudent to post a no parking sign in this area to cut down on this problem. In addition it would be beneficial to repaint the curbs on both sides of South Spruce in the no parking zones.
- At the City Dock the lanes for incoming and outgoing boaters need to be marked so that there is no confusion about where to go. There were several calls for service for people yelling at one another for cutting in the line. Having it clearly marked out would reduce the confusion and problems that we had for disgruntled fishermen. One other thing is to have the launching area designated for two lanes for launching and two lanes for pick up.
- It would help if the ATV Helmet Laws were posted on the beach pay shacks. We had an extreme amount of contacts with people letting their children on ATVs without helmets.
- It would be nice to have a dual purpose vehicle for SEO use during the dipnet fishery. One that can be taken on the beach and on paved roadways. That would be more practical than just having a vehicle that can only be used on the beach.

### Conclusion

Overall, SEOs operated efficiently and worked well together. It significantly helped that all four SEOs from 2008 returned to work as SEOs in 2009. This greatly reduced the amount of SEO training time that was needed at the beginning of the summer, and allowed the SEOs to be more proactive in the community during the first weeks of the summer.

Throughout the dipnet season, SEOs had the opportunity to work closely with the



---

KENAI POLICE DEPARTMENT

---

public, being a police presence on the beaches, and building positive public relations through service acts for the public, such as providing assistance with vehicle lockouts, assisting with stuck vehicles, and shuttling of elderly Salmon Frenzy volunteers.

Overall it was a relatively good season, aside from the lack of sun and clear skies in July. Compared to last year, some problems such as ATV use have declined, while other problems such as illegal camping and parking have grown. SEOs were kept busy throughout the season dealing with many various problems, none of which proved to be too difficult to handle.



*"Village with a Past, City with a Future"*

210 Fidalgo Avenue, Kenai, Alaska 99611-7794

Telephone: 907-283-3692 / FAX: 907-283-3693

## MEMORANDUM

To: Gus Sandahl, Kenai Police Chief  
Lt. Kim Wannamker, Kenai Police Dept.  
Wayne Ogle, Public Works Director  
Terry Eubank, Kenai Finance Director

From: Robert J. Frates, Kenai Parks & Recreation Director

Date: Sept. 16, 2009

RE: Dip Net Report - 2009

---

The 2009 Personal Use Fishery opened 6:00 am on Friday, July 10<sup>th</sup> and closed at 11:00 pm on Friday, July 31<sup>st</sup>. Preparation started well in advance of the opening day beginning with the completion of the north beach fencing project, ordering and installing signs, printing of brochures and maps, conducting staff training and meetings, securing vendors and placement of fee stations & boxes.

The Personal Use Fishery on the Kenai seems to have grown in popularity over the years and participation levels in this season's fishery appears to have exceeded all others. The Kenai Dock Facility also experienced an increase in boaters with several days marked by boaters exceeding the carrying capacity of the parking lot. Increased levels on the Kenai were probably influenced by economics (people wanting to fill their freezers), good return of fish, and river closures in other parts of the state. Steady fuel prices in July coupled with many residents choosing to vacation in-state with travel plans centered around the fishery probably contributed to its popularity as well.

This summer marked the first season for the permanent fence protecting the north beach dunes. The new fencing went a long way toward deterring unwanted foot-traffic resulting in strong growth of beach rye in areas otherwise typically trampled by pedestrian traffic.

Several concrete fire rings on the north beach (going west from Spruce St.) were placed this season along with two 4ft x 6ft colored informational signs. One sign was placed at the end of South Spruce St and the other at the end of South Forest Dr. A third 4ft x 6ft sign was placed on the beach parallel with South Forest Dr. prohibiting parking and fire from this point westward. Good compliance was demonstrated and the department did not receive any complaints from the neighborhood residents along the bluff with respect to loud noise or smoke.

As a response to extra traffic being directed onto Overland Ave., the Public Works Department arranged for pedestrian lanes to be painted along the shoulder of this road in addition to providing directional signs for vehicular traffic. This appeared to have reduced the number of complaints from private property owners in this area.

The North American Mission Board Volunteer effort was in full swing by the week of July 14th. Their effort was expanded to the South Beach and are currently planning a return for next season. Brenda Crim reported they had 300 volunteers that gave 9,000 volunteer hours (not counting planning,

communication, fundraising, setup and take-down). The following is a summary of items given away and volunteer service provided:

- 10,000 hotdogs given away
- 1,200 gallons of cocoa and 1,200 gallons of lemonade
  - 5,000 popsicles
  - 200 cases of water
- 350 kids participated in Day Camp
- 200 kids in the Bounce Houses
- 150 kids participated in sports games
- 20+ hours assisting with traffic control
  - Beach Cleanup
- Provided file & knife sharpening stations
  - Provided a first aid station

### **Litter and Fish Waste Control**

S&R Enterprises provided the necessary dumpsters and removal of bulk trash both on the North and South Beach. Parks staff supplemented this effort by picking up trash on a daily basis along with the North American Mission Board. The KCHS Cross-Country Ski Booster Club assisted with clean up half-days on Mondays and Thursdays. The club donated approximately 120 man-hours in addition to 50 man-hours setting up the fencing on the South Beach.

Approximately 16 man-hours were spent raking the beach during the fishery in an effort to keep the fish waste to a minimum. Much of this effort is strictly tide dependant during the evening or early morning hours. Fish waste totes were placed on the beach and received some use, particularly when a file station was placed next to it. Waste from the totes was emptied into a dumpster stationed in the parking lot.

### **Sanitation Facilities**

Peninsula Pumping provided portable toilet service throughout the fishery. Bid specs were generated this season and distributed for bidding resulting in very favorable costs compared to last season. Savings over last year was approximately \$20,760. Portable units were basically serviced twice per day on Friday, Saturday, and Sundays on the North and Side Beaches due to demand. Consideration was given in 2008 to constructing a permanent restroom at the end of Kenai Ave. Based on 2008 service costs, the payback time was projected to be around 6 to 9 years. However, based on 2009 service costs the payback stretches to around 13 to 15 years.

### **Sand Dune Protection**

Measures to protect the North Beach dunes, including permanent fencing, signage and enforcement, worked extremely well. The fencing was a barrier that served well as a deterrent and provided the necessary durability to withstand abuse. The dunes were noticeably less trampled and healthier at the completion of this fishery than from years past.

### **Parking**

The Kenai Little League parking lot was once again used for over-flow parking. The Kenai Little League hosted a Major boy's tournament during the first weekend of the fishery but did not pose any conflicts. Parking on Spruce St. was very congested going into the second and third weekend but the American Mission Board volunteers were able to assist immensely by distributing fee envelopes which helped keep the traffic flowing. Allowing parking on the North Beach west of Spruce St. this season relieved some of the congestion that otherwise would have been created in the parking lot and other nearby areas.

## Expense Summary

### Materials & Contract Services

Portable Toilets	\$15,160
Dumpsters	16,000
*North Side Fencing	40,781
Receipt Books	1,034
No Trespass Signs/Posts	507
4x6 Signage (3 total)	2,520
Misc (propane, batteries, pens, etc.)	645
Info Brochures	300
Colored Maps	250
Phone/Minutes	750
Estimated Fuel Costs	1,000
Sub-total	\$78,947
*Reimbursable grant	- 40,781
Sub-total	\$38,166

### Rental Value (monthly)

1, 1 Ton	\$1,000
2, ½ Ton (1/4 time)	250
*Auger (2months)	5,000
Sub-total	\$6,250
*Reimbursable grant	- 5,000
Sub-total	\$1,250

### Labor

Shack Attendants (1,122 man-hrs)	\$21,280
Fence Installation - North Beach (1,184 man-hrs)	25,000
Fence Installation - South Beach (24 man-hrs)	395
Beach Aides <sup>1</sup> (128 man-hrs)	2,100
Beach Cleanup During/After <sup>2</sup> (200 man-hrs)	3,675
Misc. Support <sup>3</sup> (18.5 man-hrs)	430
Fee Collection at LL (30 man-hrs)	500
Admin. - Meetings, Training, & Planning <sup>4</sup> (35 man-hrs)	1,600

Sub-total \$54,980

**Grand Total Expenses \$94,396**

<sup>1</sup> Labor costs are for one park aide assigned to beach for general patrol, litter/fish removal, fence work and assistance with traffic.

<sup>2</sup> Labor costs are for parks crew members supplementing work of Beach Aides for litter/fish removal, raking beach, restroom cleaning, fence mending and post-fishery cleanup.

<sup>3</sup> Labor costs are for trimming in parking lot on north shore, cleaning shacks, hanging signs, installation & retrieval of fee boxes, getting change for shack operation, and shack check-ups.

<sup>4</sup> Admin. labor costs (benefits, etc.) for Director and Groundskeeper, including seasonal staff training.

## Boating Facility Expenses

### Materials and Contracted Expenses

Portable Toilets	\$1,500
Dumpsters	500
Restroom Pumping	275

---

Cleaning Supplies	330
Spray Paint	140
Sub-total	\$2,745
<b>Labor</b>	
Shack Attendants (230 man-hrs)	\$5,724
Traffic Control (7.75 man-hrs)	158
Dock Worker Evenson (128 man-hrs)	5,274
Dock Worker Bralley (120 man-hrs)	4,406
Sub-total	\$15,562
<b>Grand Total Expenses</b>	<b>\$18,307</b>

### **Recommendations**

The following recommendations are preliminary based on initial observations and will be further reviewed throughout the process:

#### Fees

Increase fees to \$20 parking and \$20 camping (\$40 camping & parking). This would reduce the need for cash exchange and the need to carry extra five dollar bills in the shacks as well as ensure adequate revenues.

#### Private Property on North Beach

Consideration should be given to acquiring remaining privately owned properties along Kenai Avenue. This will add to better preservation and protection of the dunes and surrounding areas.

#### Increase Funding (hrs) for Parks Employees

Many of the currently funded hours are being dedicated to the Personal Use Fishery (fee shack operation) leaving shortage of hours for remainder of season, particularly early spring startup and fall.

#### South Beach Permanent Fencing

South Beach fencing similar to the North Side should be added for the protection of environmentally sensitive grass areas.

#### Vendors

Consideration should be given to better defining a program for vendors wishing to capitalize on the Personal Use Fishery, i.e., registration process, location, fees, etc.



*"Village with a Past, City with a Future"*

210 Fidalgo Avenue, Kenai, Alaska 99611-7794  
Telephone: (907) 283-7535, Ext. 236 / FAX: (907) 283-3014



## MEMORANDUM

**TO:** Gus Sandahl, Chief of Police  
Terry Eubank, Finance Director

**FROM:** Wayne Ogle

**DATE:** September 17, 2009

**SUBJECT:** 2009 DIP NET SEASON; PUBLIC WORKS CONTRIBUTION

This is a summary of the support Public Works contributions to the City's Dip Net operations.

**1. Signage on North Beach i.e. "No Fire", "No Camping", "Private Property" Reset signs, new locations**

<u>Workers</u>	<u>Hours Worked</u>	<u>Total Man-hrs</u>	<u>Rate</u>	<u>Cost</u>	<u>Total</u>
3	4	12	\$42.98	\$515.76	
<u>Equipment</u>	<u>Operating Hours</u>	<u>Total Equipment Hours</u>	<u>Rate</u>		
1 4x4 Truck	4	4	\$38.00	\$152.00	
1 City backhoe	4	4	\$47.50	\$190.00	\$857.76

**2. Rebuild Beach Access Road on North Beach for Set Net Fishery.**

<u>Workers</u>	<u>Hours Worked</u>	<u>Total Man-hours</u>	<u>Rate</u>	<u>Cost</u>	<u>Total</u>
4	8	32	\$42.98	\$1,375.36	
<u>Equipment</u>	<u>Operating Hours</u>	<u>Total Equipment Hours</u>			
1 966 Cat Loader	4	4	\$96.00	\$384.00	
1 Grader	4	4	\$120.00	\$480.00	
3 Dump Trucks	3	9	\$80.00	\$720.00	
<u>Materials</u>	<u>Loads</u>	<u>Yards</u>			
12-yd. Truck Loads of Gravel	10	120	\$6.50/yd.	\$780	\$3,739.36



**3. Final Preparation for Dip Net Operations. This consists of setting toll booths and placing barricades (protection of toll booths) on North and South Beach areas.**

<u>Workers</u>	<u>Hours Worked</u>	<u>Total Man-hours</u>	<u>Rate</u>	<u>Cost</u>	<u>Total</u>
5	8	40	\$42.98	\$1,719.20	
<u>Equipment</u>	<u>Operating Hours</u>	<u>Total Equipment Hours</u>			
2 966 Cat Loader with forks	2	8	\$96.00	\$768.00	
1 Flatbed Truck & Trailer	8	8	\$48.00	\$384.00	
					<u>\$2,871.20</u>

**4. Parking lots and gravel roads are graded. Dust control is also applied.**

<u>Workers</u>	<u>Hours Worked</u>	<u>Total Man-hours</u>	<u>Rate</u>	<u>Cost</u>	<u>Total</u>
5	24	120	\$42.98	\$5,157.60	
<u>Equipment</u>	<u>Operating Hours</u>	<u>Total Equipment Hours</u>			
14H	16	16	\$120.00	\$1,920.00	
140G	16	16	\$120.00	\$1,920.00	
Sander Truck (Small)	8	8	\$35.00	\$280.00	
<u>Materials</u>					
Calcium Chloride				\$787.70	<u>\$10,065.30</u>

**5. Retrieve Toll Booths & Barricades after Dip Net Operations. Remove event specific signage. Store in City yard.**

<u>Workers</u>	<u>Hours Worked</u>	<u>Total Man-hours</u>	<u>Rate</u>	<u>Cost</u>	<u>Total</u>
5	8	40	\$42.98	\$1,719.20	
<u>Equipment</u>	<u>Operating Hours</u>	<u>Total Equipment Hours</u>			
2 966 Cat Loader with forks	2	4	\$96.00	\$384.00	
1 Flatbed Truck & Trailer	8	8	\$48.00	\$384.00	
					<u>\$2,487.20</u>

**6. Build and install three new information signs.**

<u>Workers</u>	<u>Hours Worked</u>	<u>Total Man-hours</u>	<u>Rate</u>	<u>Cost</u>	<u>Total</u>
3 assemble signs	4	12	\$42.98	\$515.76	
3 place signs	4	12	\$42.98	\$515.76	
<u>Equipment</u>	<u>Operating Hours</u>	<u>Total Equipment Hours</u>			
Vactor truck	2	2	\$150.00	\$300.00	
Backhoe	1	1	\$47.50	\$47.50	
<u>Materials</u>	<u>Number of Items</u>				
Sign post	9		\$75.00	\$675.00	
4x8 sheets OSB	3		\$12.95	\$38.85	
4x8 sheets 1/8" plexi-glass	3		\$79.00	\$237.00	
					<u>\$2,329.87</u>

**7. Add gravel to South Beach Cannery Road Entrance**

<u>Workers</u>	<u>Hours Worked</u>	<u>Total Man-hours</u>	<u>Rate</u>	<u>Cost</u>	<u>Total</u>
<u>Equipment</u>	<u>Operating Hours</u>	<u>Total Equipment Hours</u>			
3 Dump Trucks	4	12	\$80.00	960.00	
966 Loader	4	4	96.00	\$384.00	
<u>Materials</u>	<u>Loads</u>	<u>Yards</u>			
12-yd loads gravel	10	120	\$6.50/yd.	\$780.00	\$2,124.00

**8. Place concrete fire rings and remove old dock planks from North Beach**

<u>Workers</u>	<u>Hours Worked</u>	<u>Total Man-hours</u>	<u>Rate</u>	<u>Cost</u>	<u>Total</u>
3	4	12	\$42.98	\$515.76	
<u>Equipment</u>	<u>Operating Hours</u>	<u>Total Equipment Hours</u>			
Backhoe	2	2	\$47.50	\$95.00	
966 Loader	2	2	\$96.00	\$192.00	
Flatbed Truck	2	2	\$48.00	\$96.00	\$898.76

**Summary: Public Works contributed the following in direct support to the City of Kenai's 2009 Dip Net Operations:**

		<u>Total Cost</u>
Man-hours	280 hours	\$12,034.40
Equipment Hours (rates vary)	118 hours	\$10,040.50
Materials (yds of gravel)	240 hours	\$3,298.55
Fuel Costs @ \$3.52/gal	884 gallons	\$3,111.68

Grand Total \$28,485.13



## *"Village with a Past, City with a Future"*

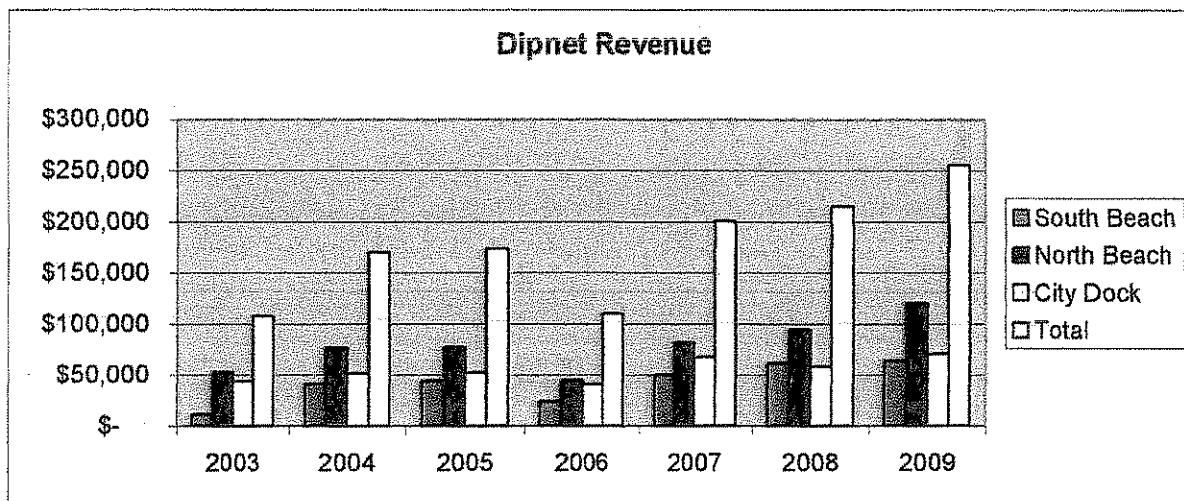
FINANCE DEPARTMENT  
210 Fidalgo Avenue, Kenai, Alaska 99611-7794  
Telephone: 907-283-7535 ext 221 / FAX: 907-283-3014

To: Rick Koch, City Manager  
From: Terry Eubank, Finance Director  
Date: September 24, 2009  
Subject: 2009 Dipnet Summary

### Revenue and Participants

The 2009 dipnet season concluded with total revenue of \$254,962, a 18.68% increase over the 2008 season. The 2009 season's user fees remained unchanged from the prior year. The following is a breakdown of revenue by location from the 2003 season through this season.

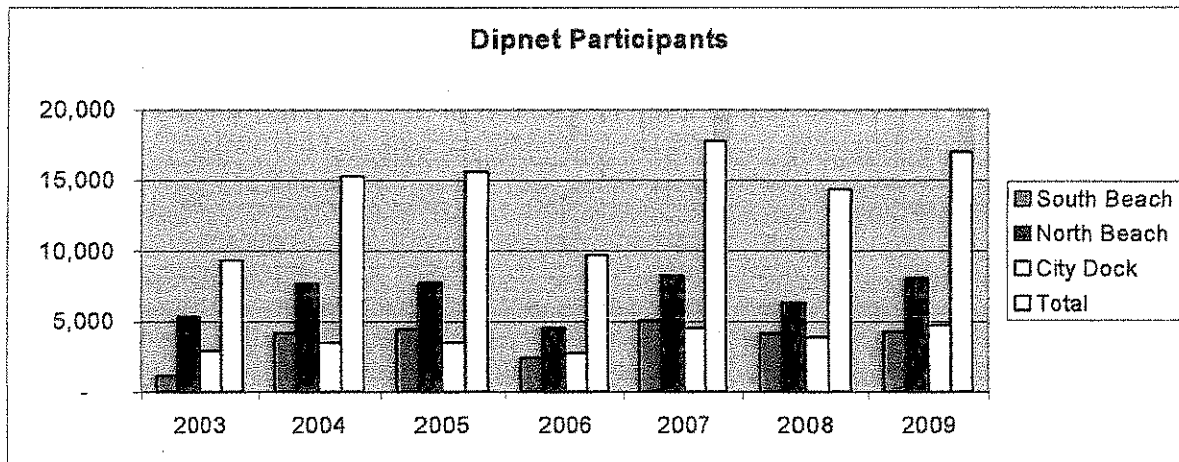
	<u>2003</u>	<u>2004</u>	<u>2005</u>	<u>2006</u>	<u>2007</u>	<u>2008</u>	<u>2009</u>
South Beach	\$ 11,336	\$ 41,465	\$ 44,078	\$ 24,153	\$ 50,418	\$ 61,820	\$ 64,008
North Beach	52,935	76,720	77,370	45,222	82,115	94,874	120,391
City Dock	43,654	51,770	52,017	41,115	67,812	58,131	70,563
Total	<u>\$ 107,925</u>	<u>\$ 169,955</u>	<u>\$ 173,465</u>	<u>\$ 110,490</u>	<u>\$ 200,345</u>	<u>\$ 214,825</u>	<u>\$ 254,962</u>



2009 Finance Department  
Dipnet Summary

Total revenue increased in 2009 as a result of an increase in participants. The following represents an estimate of the number of participants by year. This is a very simple estimate and does not represent actual participant counts.

	<u>2003</u>	<u>2004</u>	<u>2005</u>	<u>2006</u>	<u>2007</u>	<u>2008</u>	<u>2009</u>
South Beach	1,134	4,146	4,408	2,415	5,042	4,121	4,267
North Beach	5,294	7,672	7,737	4,522	8,211	6,325	8,026
City Dock	2,910	3,451	3,468	2,741	4,521	3,875	4,704
Total	<u>9,338</u>	<u>15,269</u>	<u>15,613</u>	<u>9,678</u>	<u>17,774</u>	<u>14,321</u>	<u>16,997</u>



**Credit Card Acceptance**

Credit cards were not accepted during the fishery this year due to the problems encountered last season. The biggest difficulty in accepting credit cards is the connectivity of the fee shacks. None of the shacks have permanent sources of power or communications. The result is slow access time and constant problems with systems needing recharging. Requests by participants to pay with a credit card were minimal. The one significant issue that could be reduced with a properly function credit card system is the amount of cash received in the fee shacks.

**Recommendation:**

Until connectivity problems are resolved credit cards are not viewed as an acceptable solution to our cash handling volume. The department will explore the ability to pay fees online as a possible solution.

**Conclusion:**

Overall the 2009 dipnet season was a success from the Finance Department's perspective. It is anticipated that the implementation of the Department's recommendations will assure future success. The safety of our employees continues to be our strongest focus with reducing the amount of cash present at fee stations our number one priority.

## 2009 DIPNET REVENUE EXPENDITURE SUMMARY

### REVENUE

NORTH SIDE PARKING	\$ 120,391.00
SOUTH SIDE PARKING	64,008.00
CITY DOCK FEES	<u>70,563.00</u>

**TOTAL INCOME** **\$ 254,962.00**

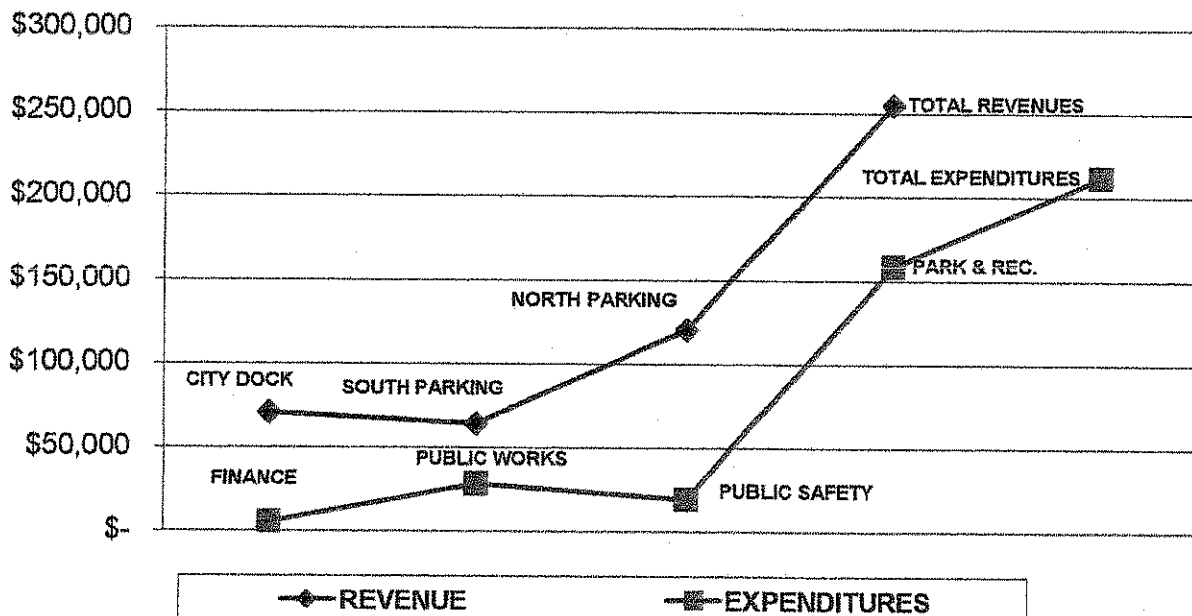
### EXPENDITURES

FINANCE	5,599.58
PUBLIC SAFETY	19,192.96
PARKS & RECREATION	158,476.85
PUBLIC WORKS	<u>28,485.13</u>

**TOTAL EXPENDITURES** **\$ 211,764.52**

**REVENUES OVER EXPENDITURES** **\$ 43,207.48**

### 2009 DIPNET REVENUE vs EXPENDITURES



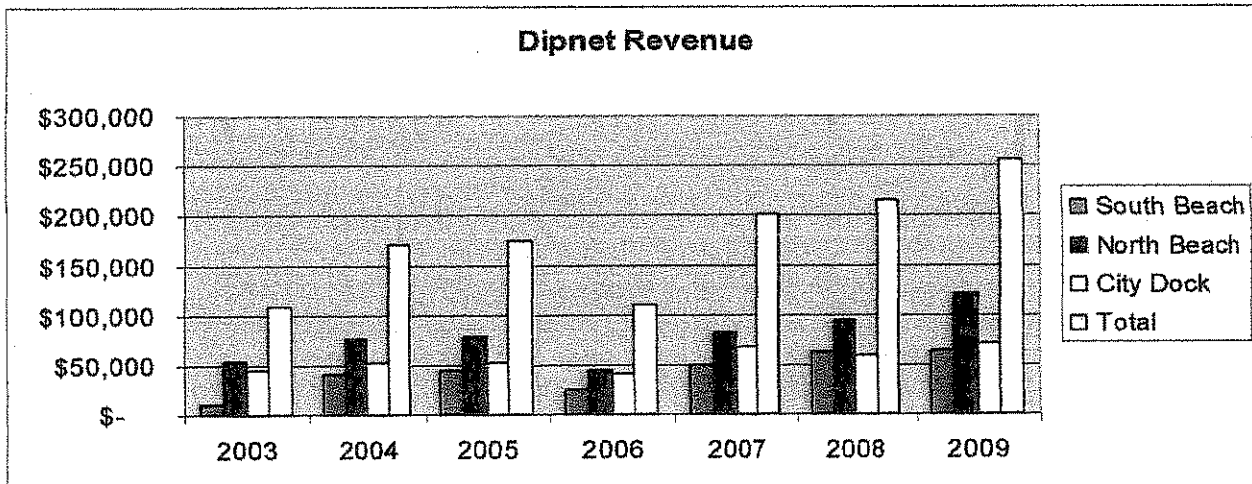
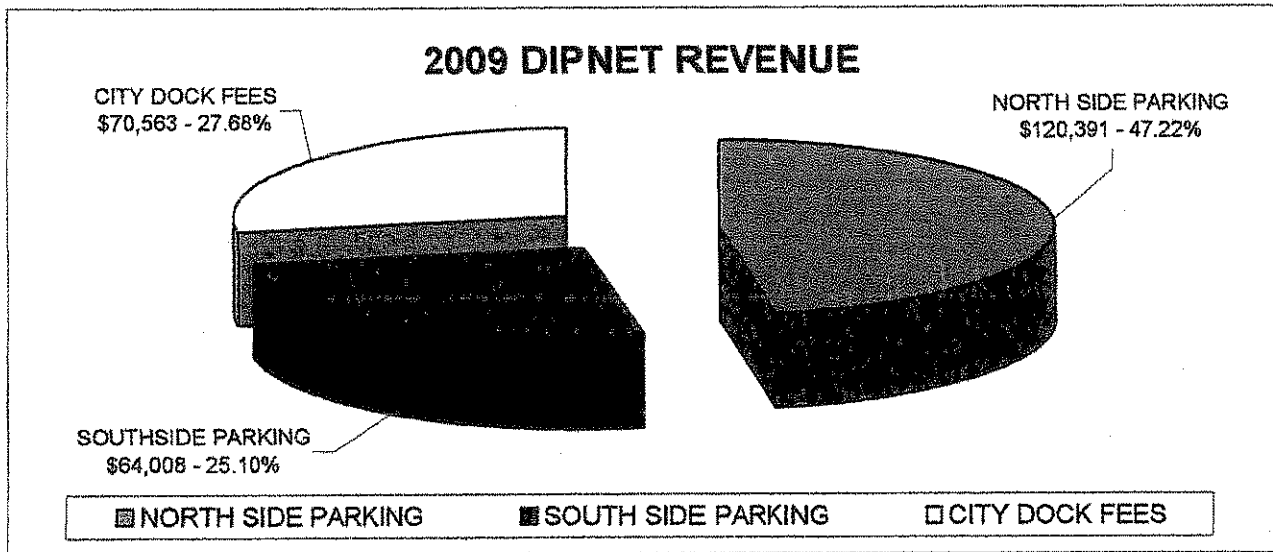
## 2009 DIPNET REVENUE SUMMARY

### REVENUE

NORTH SIDE PARKING	\$ 120,391.00	47.22%
SOUTH SIDE PARKING	64,008.00	25.10%
CITY DOCK FEES	<u>70,563.00</u>	27.68%

**TOTAL INCOME**

**\$ 254,962.00**



## 2009 DIPNET EXPENDITURE SUMMARY

EXPENDITURES	<u>QUANTITY</u>	<u>UNIT COST</u>	<u>TOTAL</u>
<b>FINANCE</b>			
<b>STAFF TIME</b>			
DAILY CASH RECEIPT RECONCILIATIONS	161.00 HOURS	34.78	\$ 5,599.58
<b>TOTAL FINANCE</b>			<b>\$ 5,599.58</b>
<b>PUBLIC SAFETY</b>			
<b>STAFF TIME</b>			
OFFICER PATROLS - REGULAR TIME	64.00 HOURS	31.17	1,994.88
OFFICER PATROLS - OVERTIME	42.00 HOURS	48.19	2,023.98
SEASONAL EMPLOYMENT OFFICERS - REGULAR TIME	337.00 HOURS	15.44	5,203.28
SEASONAL EMPLOYMENT OFFICERS - OVERTIME	4.00 HOURS	23.46	93.84
PROJECT ADMINISTRATION - CHIEF	12.50 HOURS	42.56	532.00
PROJECT ADMINISTRATION - LIEUTENANT	20.00 HOURS	41.25	825.00
PROJECT ADMINISTRATION - SERGEANTS	11.00 HOURS	38.18	419.98
<b>TOTAL PUBLIC SAFETY STAFF TIME</b>			<b>11,092.96</b>
<b>EQUIPMENT</b>			
PICK-UP	1.00 MONTH	3,100.00	3,100.00
ATV	2.00 MONTH	1,000.00	2,000.00
<b>TOTAL PUBLIC SAFETY EQUIPMENT</b>			<b>5,100.00</b>
<b>DIRECT EXPENDITURES</b>			
FUEL	1.00 ACTUAL	3,000.00	3,000.00
<b>TOTAL PUBLIC SAFETY DIRECT EXPENDITURES</b>			<b>3,000.00</b>
<b>TOTAL PUBLIC SAFETY</b>			<b>\$ 19,192.96</b>
<b>PARKS AND RECREATION</b>			
<b>STAFF TIME</b>			
SHACK ATTENDANTS	1,382.00 HOURS	19.90	27,501.80
FENCE INSTALLATION - SOUTH BEACH	24.00 HOURS	16.46	395.04
BEACH AIDES	128.00 HOURS	16.41	2,100.48
BEACH CLEAN-UP	200.00 HOURS	18.38	3,676.00
MISCELLANEOUS SUPPORT	26.25 HOURS	22.40	588.00
DOCK STAFF TIME	248.00 HOURS	39.03	9,679.44
PROJECT ADMINISTRATION - DIRECTOR	35.00 HOURS	45.71	1,599.85
<b>TOTAL PARKS AND RECREATION STAFF TIME</b>	<b>2,043.25</b>		<b>45,540.61</b>
<b>EQUIPMENT</b>			
PICK-UP 1 TON	1.00 MONTH	1,000.00	1,000.00
PICK-UP 1/2 TON	0.50 MONTH	500.00	250.00
<b>TOTAL PARKS AND RECREATION EQUIPMENT</b>			<b>1,250.00</b>
<b>DIRECT EXPENDITURES</b>			
PORTABLE TOILETS	1.00 ACTUAL	16,935.00	16,935.00
DUMPSTERS	1.00 ACTUAL	16,500.00	16,500.00
RECEIPT BOOKS, FEE ENVELOPES, & BROCHURES	1.00 ACTUAL	1,584.00	1,584.00
SIGNAGE	1.00 ACTUAL	3,027.00	3,027.00
FUEL	1.00 ACTUAL	1,000.00	1,000.00
MISCELLANEOUS	1.00 ACTUAL	1,865.00	1,865.00
<b>TOTAL PARKS AND RECREATION DIRECT EXPEN.</b>			<b>40,911.00</b>
<b>DUNE FENCING PROJECT</b>			
MATERIALS	1.00 ACTUAL	40,781.00	40,781.00
EQUIPMENT RENTAL	1.00 ACTUAL	5,000.00	5,000.00
INSTALLATION LABOR (1,184 HOURS)	1,184.00 HOURS	21.11	24,994.24
<b>TOTAL PARKS AND RECREATION DUNE FENCING</b>			<b>70,775.24</b>

## 2009 DIPNET EXPENDITURE SUMMARY

<b>TOTAL PARKS AND RECREATION</b>			<b>\$ 158,476.85</b>
	<u>QUANTITY</u>	<u>UNIT COST</u>	<u>TOTAL</u>
<b>PUBLIC WORKS</b>			
<b>STAFF TIME</b>			
NORTH BEACH SIGNAGE	12.00 HOURS	42.98	515.76
REBUILD NORTH & SOUTH BEACH ACCESS	32.00 HOURS	42.98	1,375.36
DIPNET SHACK AND BARRICADE PLACEMENT	40.00 HOURS	42.98	1,719.20
PARKING AND ROAD GRADING	120.00 HOURS	42.98	5,157.60
DIPNET SHACK AND BARRICADE RETRIEVAL	40.00 HOURS	42.98	1,719.20
PLACE FIRE RINGS ON BEACH	12.00 HOURS	42.98	515.76
INSTALLATION OF NEW SIGNAGE	24.00 HOURS	42.98	1,031.52
TOTAL PUBLIC WORKS STAFF TIME	280.00		12,034.40
<b>EQUIPMENT</b>			
PICK-UP	4.00 HOURS	38.00	152.00
BACKHOE	7.00 HOURS	47.50	332.50
966 LOADER	22.00 HOURS	96.00	2,112.00
FLATBED TRUCK AND TRAILER	18.00 HOURS	48.00	864.00
GRADER	36.00 HOURS	120.00	4,320.00
DUMP TRUCK	21.00 HOURS	80.00	1,680.00
VACTOR TRUCK	2.00 HOURS	150.00	300.00
SANDER TRUCK	8.00 HOURS	35.00	280.00
TOTAL PUBLIC WORKS EQUIPMENT			10,040.50
<b>DIRECT EXPENDITURES</b>			
GRAVEL	240 YARDS	6.50	1,560.00
SIGNAGE	1 ACTUAL	950.85	950.85
CALCIUM CHLORIDE	1 ACTUAL	787.70	787.70
FUEL	884 GALLONS	3.52	3,111.68
TOTAL PUBLIC WORKS DIRECT EXPENDITURES			6,410.23
<b>TOTAL PUBLIC WORKS</b>			<b>\$ 28,485.13</b>
<b>TOTAL EXPENDITURES</b>			<b>\$ 211,754.52</b>

