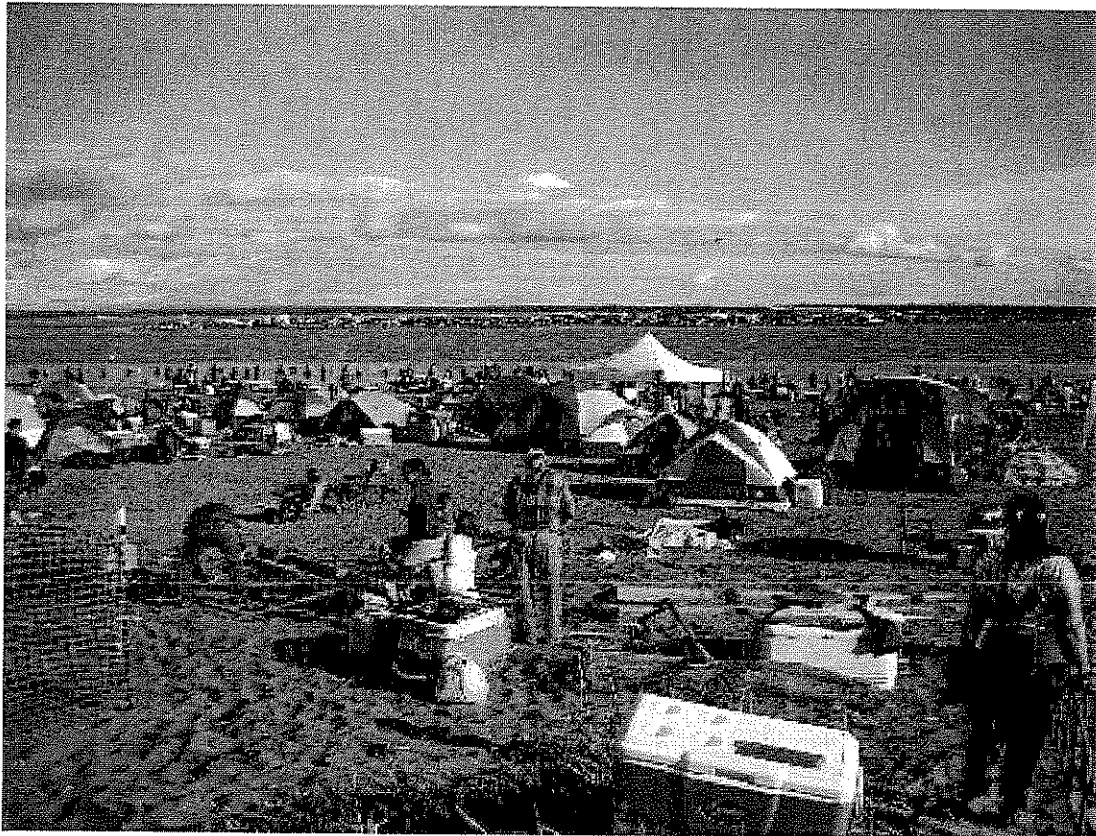


Item 6a.

2008

Kenai River Dipnet Fishery



July 10 - 31

Table of Contents

Police Department Summary.....	1-6
Chief of Police Supplement to Department Summary.....	7-8
Seasonal Employment Officer Summary.....	9-16
Parks & Recreation Summary.....	17-20
Kenai Avenue Restroom Cost Benefit Analysis.....	21
Public Works Summary.....	22-24
Finance Department Summary.....	25-27
Revenue and Expenditure Summary.....	28
Revenue Summary.....	29
Expenditure Summary.....	30-31



KENAI POLICE DEPARTMENT

107 SOUTH WILLOW STREET KENAI, AK 99611

Telephone (907) 283-7879

Fax (907) 283-2267

TO: Rick Koch, City Manager

September 9, 2008

FM: Lt. Kim Wannamaker

THRU: Gus Sandahl, Chief of Police

RE: 2008 Kenai River Personal Use Dipnet Fishery

The Annual Dipnet Report is presented for your review. It includes reports from the Police, Public Works, Finance, and Parks and Recreation Departments. You will find a summary overview of Police Department activity specific to the Kenai River Dipnet Fishery to include observations, statistics, problems encountered, and recommendations for improvement. The Seasonal Enforcement Officer report is also attached.

The Kenai River Dipnet Fishery opened at 6am on Thursday 7-10-08, and closed at midnight Thursday 7-31-08. There were no emergency openings, extensions, or closures this year; the fishery remained a 6a-11p daily event.

The 2008 Dipnet Fishery saw fewer numbers of participation than record-setting '07, but generated the highest cumulative revenue since the fishery opened in 1996. City departments prepared for anticipated & historical challenges, resulting in very effective overall management of the fishery; more compliments toward management were received this year than ever before.

Four part-time Seasonal Enforcement Officers (SEOs) spent the majority of their July shifts engaged in Dipnet Fishery related activity, with parking and ATV/Off-road vehicle violations being the significant portion of their enforcement/management focus.

The Police Department handled 83 dipnet fishery-related calls for service this year, nearly half of the 153 in 2007. The majority of calls for service were cash pick-ups from the 4 pay shacks, followed by parking complaints and ATV operations. Other issues generating complaints involved camping, campfires, and noise. The decrease in calls-for-service numbers was a direct result of dedicated officer(s) on the beach(es), who took care of things right then & there w/o logging a call-in complaint.

There were only 2 vehicles impounded, both for parking violations on the North beach; there were 18 impounds last year. This year also saw an absence of arrests, and nobody died during dipnet-related activity.

Of the 410 cumulative hours spent by SEOs on the dipnet fishery, most were spent at the North Beach (S. Spruce). Police Officers spent 126 hrs on dedicated dipnet fishery-related activity in

KENAI POLICE DEPARTMENT

addition to 86.5 hrs logged on dipnet-related calls for service. SEOs and Officers spent a lot of time patrolling both beaches on 4-wheelers, which is a very practical manner to cover that large and very congested area.

State Fish & Wildlife Troopers (AWT) were a visible presence at the City Dock, N. Beach, and on the water in a patrol vessel again this year. They kept a relatively low profile but were very active enforcing various Fish & Game laws.

The greatest managerial challenge this season was parking, traffic congestion on Kenai Avenue, and restroom facilities for the masses during peak days.

South Beach problems involved illegal parking and heavy traffic congestion on Dunes Road near the pay shack, and ATV/off-road vehicles operations. The Dunes Road parking is troublesome because it is on Borough land, in which the Alaska State Troopers have jurisdiction for enforcing traffic & criminal offenses (parking, trespass). The Police Department was told by State Troopers that AST would respond to criminal activity, but would not enforce camping/parking violations on Dunes Road.

Four pay shacks were placed in the same locations as previous years: S. Spruce Street at the beachfront parking lot, Boat Launch Road at the City Dock, Dunes Road and Old Cannery Road. One payshack, on Old Cannery Road, sustained damage when someone threw a rock through a window; nothing was stolen.

Kenai Police Department expenses for the 2008 Dipnet Fishery totaled \$27,877

Police Officers pay (87 hrs, + 126 dedicated OT hrs)	\$4176 + 6787
S.E.O. pay (410 hrs)	\$6138
Pre & Post season Admin meetings/planning (Chief, Lt)	
➤ Field & Deskwork, Reports (Lt. - 20 hrs, Chief - 10 hrs)	
➤ Meetings w/Staff & Personnel (Lt. - 10 hrs)	
➤ Training SEOs (Lt. - 10 hrs)	
➤ Meeting w/other Depts and Agencies	
○ Lt. - 6 hrs, Chief - 4 hrs	
Total Chief (14 hrs), Lt (46 hrs)	\$812 + \$2634
Vehicle (pickup equivalent rental - July)	\$2900
ATV (purchase cost divided by 10 yr useful life) x2*	\$1400
Fuel**	\$3000
Traffic Vests for Dipnet Volunteers	\$30

KENAI POLICE DEPARTMENT

* The Kenai Police Department has one 4-wheeler, and based on a 10-year useful life has a cost of \$700 per year. For the 2008 Dipnet fishery AST loaned KPD a second 4-wheeler which was needed for dipnet-related enforcement. If this ATV was not loaned to us, the City would need to acquire/purchase a second ATV with a cost of \$700 per year (10 year useful life).

** Patrol cars & the Dept. pickup, and two 4-wheelers were equipment expenditures for the fishery. The costs included would reflect fuel consumption relative to driving to/from pay shacks, City Hall, police station, Kenai Ave, and up & down the beaches on the ATVs, and idling during stops at these locations. Fuel was twice as expensive this year than last.

2008 Observations

Signage deficiencies were addressed pre-dipnet season, and then again as they were noticed/observed, and immediate corrections improved parking confusion. Three areas where people claimed confusion were (1) Handicap parking spaces, (2) Vehicle traffic on the North beach toward the mouth of the river, (3) Parking or No Parking between S. Spruce extended & S. Forest Dr. extended.

On the whole, public awareness has improved with respect to parking, camping, campfires, and bathrooms due to good signage posted at/near all the pay shacks and pay/parking areas.

Appropriate signage (warnings) on the orange fencing contributed greatly to keeping people & vehicles off the vegetated dunes.

Orange fencing around the vegetated dunes kept 99% of people & things off the dunes and provided a visual and physical protective barrier to areas of environmental concern.

Public Information was available via commercial media, online sites such as the City of Kenai and Alaska Dept of Fish & Game, printed brochures distributed by the City, and radio public service announcements. This information included answers to FAQ for parking, fees, camping, campfires, dunes & grassy areas, restroom facilities, and contact information for State and City management entities.

Parking & Camping fees increased from \$10 to \$15. The manned pay shacks contributed significantly to compliance, as did aggressive presence by police and SEO personnel. SEOs issued hundreds of written warnings for parking & non-payment, or for not displaying the parking permit.

On Saturday July 19, the busiest day of the '08 fishery, vehicles filled the N. Beach "overflow" parking on the sand, S. Spruce parking lot, S. Spruce, the little league parking lots, part way down N. Spruce toward 4th Ave, and commercial parking lots along KSR near S. Spruce. Lines

KENAI POLICE DEPARTMENT

on Boat Launch Road were backed up on Bridge Access Road nearly to Carlisle Trucking, and the Kenai Landing launch & parking lot were filled to overflowing, onto Cannery Road. The abundant presence of Police, Parks & Rec, & Volunteer personnel kept traffic flow very manageable; personnel's interaction with people waiting in line helped ease tensions & impatience.

Restroom (port-a-potty) service. During peak days, there were constant lines of 20-30 people waiting to use the 8 potties on Kenai Ave. The potties didn't overfill, however they ran out of TP more than once, which generated loud complaints.

Off-Road Vehicles and associated violations are a recurring issue. Police & SEOs responded to multiple complaints of ATV operations on both beaches, adolescent operators & passengers w/o helmets, and speeding on the beaches and access roads.

Dumpster service was overall satisfactory. There were fewer instances of traffic congestion at the end of Kenai Avenue preventing the garbage truck from getting to the dumpsters.

Litter and Trash collection and management needs are significant for the three weeks of the Fishery. The increase in trash receptacles in more places helped immensely this year.

Traffic congestion on Kenai Avenue was an anticipated concern, and aggressive authority presence contributed significantly to a decline in bottlenecks and tempers due to stagnant traffic flow.

Doubling the SEO force and having Officers working dedicated dipnet shifts, greatly increased police presence, which was a deterrent to bad behavior, provided immediate access by citizens with questions & concerns, and enhanced a safer environment for the money-handlers and shack attendants.

The group of 171 Volunteers from Anchorage (comprised of missions groups from the States) was a phenomenal help on the north beach! Their ministry provided shelter, activities for children & pre-teens, a first-aid station, fish cleaning tables, and willing & able people for traffic direction/control, lost kid searches, maintenance of the orange fencing, and litter patrols. *This group was a significant contributing factor to the peace & order on the beach this year.*

KENAI POLICE DEPARTMENT

Recommendations

The recommendations and suggestions for improvement here are based on initial assessment. We expect to further refine our ideas for improvement following a multi-department debriefing in mid-September.

Continue to coordinate with Little League to allow North Beach overflow parking in the Little League ball field lots on South Spruce Street. Some years there are post-season tournaments and the parking lot is needed for those involved with baseball. However, when there are no post-season baseball activities, that parking lot would be ideal for overflow dip netter parking.

Provide a clear plastic bag for displaying camping permits. Those paying for camping should have their permit clearly visible, on their tents or vehicles, for authorities.

Signage Improvements for the North Beach call for additional signs at the Kenai Avenue turnaround stating "5 minutes loading/unloading", and for a more clearly marked Iron Ranger for self-pay participants; perhaps painting the post a very bright neon green, pink, yellow, or blue to draw attention. To deter unlawful ATV traffic between the North Beach and the Municipal Park, permanent signs are needed at access points to the Park, clearly posting that ATV's are prohibited. On the South Beach additional signs are needed that prohibit operation of vehicles in the wetland areas. Regulatory signs stating "No parking/stopping within 30 feet of restrooms" would help facilitate Restroom service.

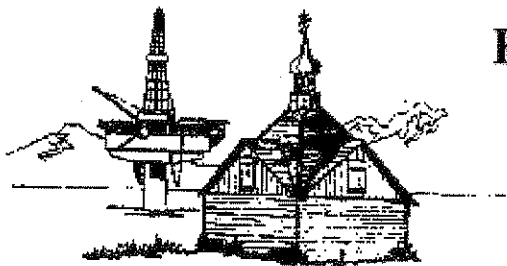
Fresh blue paint should be applied to the parking barrier in front of every Handicap spot, as well as signs for each Hcp parking space, before 7-10-09.

Orange Barrier Fencing (along with improved signage) will continue to help prevent wetlands and dune destruction in areas where permanent fencing is not installed. The fencing this year established a clear boundary for foot traffic and tents, and should be erected again next year.

Continue with four Seasonal Enforcement Officers, and anticipate Dedicated Dipnet Officer Shifts scheduled again for next year. Having both, proved to greatly reduce calls-for-service, and kept other on-duty personnel unencumbered and able to respond to other calls.

KENAI POLICE DEPARTMENT

Increase the number of Port-a-potties by adding 3 or 4 at the end of Kenai Avenue; and ensure that 2 or 3 additional Port-a-potties are placed at the end of South Spruce (near the existing permanent rest room).



KENAI POLICE DEPARTMENT

107 SOUTH WILLOW STREET KENAI, AK 99611

Telephone (907) 283-7879

Fax (907) 283-2267



TO: Rick Koch, City Manager
FROM: Gus Sandahl, Chief of Police
DATE: October 3, 2008
RE: Supplement to Lt. Wannamaker's 2008 Dipnet Report

Lt. Wannamaker completed the Kenai Police Department's 2008 Dipnet Report, following an initial dipnet fishery meeting on September 9th with City Administration. On September 16th, department heads involved with the dipnet fishery (Frates, Sandahl, Ogle, Eubank) held a second meeting in preparation for submitting the 2008 Dipnet Report. Brenda Crimm (North American Mission Volunteer Coordinator) attended the meeting telephonically.

At the Sept. 16th meeting, Brenda Crimm summarized her volunteer resources expended (See Frates' report for specifics). She assured those present that the volunteers will be back to assist the City of Kenai with the 2009 Dipnet Fishery. Brenda was highly complementary toward city personnel and their interaction with the volunteers.

During the 2008 dipnet fishery, the volunteers specifically assisted Police Department functions by providing extra traffic control assistance at the end of Kenai Ave. The volunteers also had their own zip ties, and continuously mended broken fencing on the N. Beach. Both of these services were highly appreciated, and will be needed/appreciated for the 2009 season as well. Since the permanent fencing is planned for installation on the N. Beach, the fence mending function will shift to the S. Beach.

For the 2009 fishery, Brenda identified minimal recommendations/needs. Brenda requested two parking spaces, reserved for volunteer vans, in the North Beach parking lot. She mentioned they plan to expand the number of fillet tables on the beach, and hoped to have college-aged volunteers rinsing the tables with buckets of ocean water. She expressed that she'd like to have volunteers dispose of fish heads/carcasses from these cleaning tables, and would also like volunteers to help fishery participants carry gear from the beach to loading points along the road. Brenda realized Fish and Game restrictions might limit their abilities to help with these tasks.

The Police Department has checked with Fish and Game, and found that volunteers can assist with carrying items that aren't directly related to the dipnet fishery (i.e. carrying tents and camping equipment). However, the carrying of fish coolers, fish waste/carcasses, dipnets, or other dipnet-related gear is prohibited. The Police Department will identify if the carrying of water to fish cleaning tables and the subsequent rinsing of the tables is allowed.

KENAI POLICE DEPARTMENT

Brenda made it clear that in order to protect the purity of the volunteer motives, she and the volunteers want "no publicity."

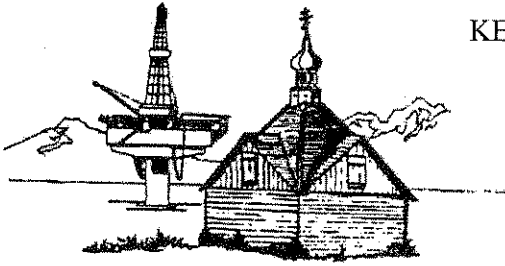
Other Issues for Consideration: There has been discussion of allowing motor vehicle traffic in the current prohibited area of the North Beach (east of S. Spruce) for 11 months out of the year (excluding July). The installation of permanent fencing would help ensure that motor vehicles are not driven on the dunes. However, consideration/evaluation should be given as to whether opening this area to motor vehicles would cause a disturbance to other established beach activities (walking, picnics, other leisure activities).

There is additional discussion of closing motorized dipnet access to Old Cannery Rd. As recent as May 2005, the State Department of Natural Resources declined to approve the city's request for a temporary closure of Old Cannery Rd. during the 2005 Dipnet fishery. (See May 2, 2005 memo to Public Works from Richard. B Thompson – Regional Mgr. of Dept. of Natural Resources).

For the 2008 Dipnet season, camping was not allowed within 25 ft. of the Dunes. This restriction is not listed in the City Codes, but signs were posted on the North Beach advising of the 25 ft. distance. With the construction of a permanent fence, the City could consider removing this restriction.

Dipnet Impact on Setnet Fisherman (North Beach):

In a recent discussion with a commercial fishing setnet site owner, he gave the city positive reviews for the 2008 Dipnet Fishery. This owner utilizes the North Beach entrance to access his beach site just north of Kenai. He complemented the personnel at the shacks for allowing setnet vehicles to go around the lines of cars waiting at the shack. He also indicated the gravel extending onto the beach helped significantly. All of his input was positive, and he said the City was light years ahead compared to years past.



KENAI POLICE DEPARTMENT
107 SOUTH WILLOW STREET KENAI, AK 99611

Telephone (907) 283-7879
Fax (907) 283-2267

Memo

To: Lt. Wannamaker

From: SEOs Collum, Semmens, Caswell, Chilson

Date: 8/3/2008

Re: 2008 Kenai River Dip Net Fishery

Introduction

This report includes a summary of Kenai Police Department Seasonal Enforcement Officer activity specific to the dipnet fishery, observations, statistics, problems encountered, and thoughts for improvement for the coming 2009 season.

The fishery opened on Thursday, July 10th at 0600 and closed on Thursday, July 31 at 2300 hours. There were no emergency openings or closings called for by the Alaska Department of Fish and Game during the 2008 dipnet fishery.

This season there were four Seasonal Officers (SEOs) employed by the Kenai Police Department. The SEOs spent a total of 640 hours working during the dipnet fishery. The majority of these hours were spent handling problems and being a presence on the beaches.

General Information

As usual, the 2008 dipnet season started slow and slowly increased in intensity. By the 17th of July, the parking lot of the North Beach was 100 percent full, though fishing was slow due to commercial fishing boats. On the 18th fishing had picked up slightly, but there were more people on the beach than fish to catch. This was possibly caused by a story in the Anchorage Daily News claiming a huge run of fish. Both North Beach and South Beach were at maximum capacity. The 18th and 19th were the peak days from this season. After the 19th, fishing began to slow down and people began to slowly leave the beaches. By the end of the season, the parking lot was nearly empty and the fishing was extremely slow.

Pay shacks were located at the entrances to all dipnet areas. The shacks were located at N. Beach on S. Spruce, the South Beach at Dunes Rd., Old Cannery Rd., and at the City Dock on

KENAI POLICE DEPARTMENT

Boat Launch Rd. The shacks were manned from 0545 to 2300 hours. When the shacks were unattended, users paid their fees at iron rangers located next to the pay shacks. Fees were enforced by the shack attendants from 0600-2300 and by the SEOs at other times. Price for parking and camping increased this year from ten dollars in 2007 to fifteen dollars in 2008. SEOs received many complaints related to the price increase. On the 13th of July, the pay shack at the Old Cannery entrance to South Beach was vandalized. Someone threw a rock through the window but did not take anything from inside the shack.

During the 2008 season, SEOs received 62 dipnet related calls for service. The most prominent calls received were for cash pickups from the various pay shacks. SEOs received numerous complaints about parking on Kenai Ave. and calls relating to ATV violations. The majority of complaints came from the North Beach where the SEOs spent most of their time. SEOs patrolled the beaches using two four-wheelers, which allowed for more proficient response to calls.

North Beach

The largest problem encountered by SEOs at North Beach was parking, specifically on Kenai Avenue. The parking lot at the end of South Spruce was completely full as well as street parking on S. Spruce and the Little League Field overflow parking area. SEOs issued large quantities of written and verbal warnings. No citations were issued for parking and two cars were impounded. Two citations were issued for ATV related violations during the 2008 fishery, one for not wearing a helmet under 18 and the other for operating to the left of the entrance to the beach.

South Beach

South Beach required far less attention from SEOs. The most common violations were ATV violations. On July 18th, an SEO dealt with a civil dispute between several people as well as a citizen complaint from the owner of the Beach Front Lodge concerning parking in front of the entranceway to the lodge. This resulted in many written warnings, but no impounds. The 18th was the busiest day on South Beach, and many verbal warnings were issued for underage children riding ATVs without proper headgear. Another type of call for service reported to

SEOs was ATV operation in the dunes and wetlands. These reports were never substantiated by

KENAI POLICE DEPARTMENT

SEOs but ATV operation in the dunes was greatly reduced thanks to orange fencing separating them from the beach area. On the 27th of July, SEOs received a call concerning a brown bear. The SEOs observed the bear to make sure it did not disrupt the serenity of the beach, but the bear left of its own accord.

Kenai City Dock

City Dock was very self-maintaining during the dipnet opening. SEOs aided in responding to a minor boating accident involving a possible DUI. This was the only call for service SEOs were involved in besides the daily cash pick-ups. On several occasions, SEOs would find cars parked on Boat Launch Rd. instead of in the parking lot. These cars belonged to dipnetters who did not want to pay the fee to dip. These cars were warned and the problem slowly discontinued. During peak times, the parking lot would be about 80-100 percent full.

Miscellaneous

Restrooms at the beaches and boat launch were well maintained this year. On several occasions, someone put rocks and toilet paper in the bathroom at the municipal park, causing it to overflow, but the problem did not continue to occur all season. The port-o-potties at the end of Kenai Avenue were the most highly used of all the restrooms and therefore needed the most maintenance.

Many complaints were received about off road vehicle operation on the beaches. The majority of these complaints were for operating unsafely to the right of the beach entrance on N. Beach. These complaints resulted in many verbal and written warnings and two citations. N. Beach only had one complaint of ATV operation in the dunes. Riding in the dunes was all around reduced by placing orange fencing around them.

Dumpsters were extremely well maintained this year. There was only one real problem involving the dumpsters during the 2008 season. During the second week of the dipnet fishery, someone ignited a fire in the dumpster closest to the beach access restroom. New developments in the fish disposal situation were totes placed throughout the beaches. These totes reduced the amount of fish remains that pile up throughout the season.

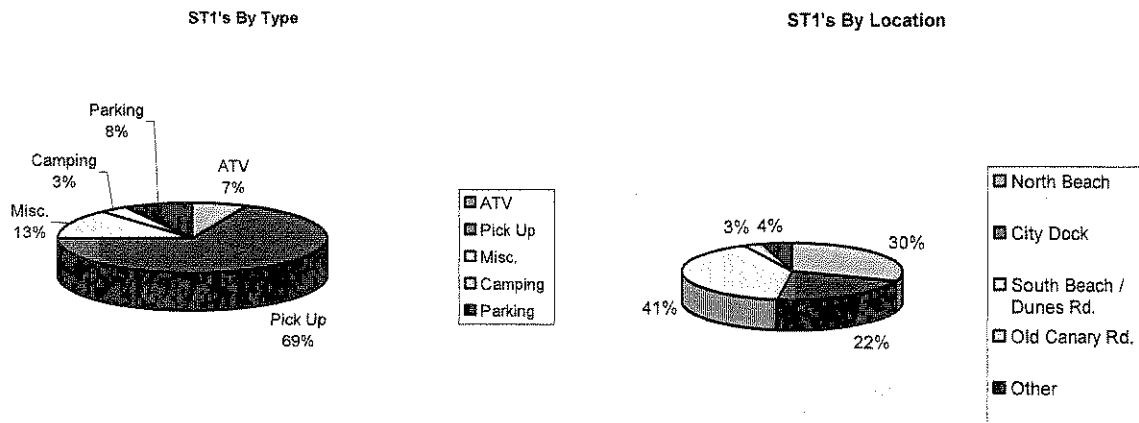
Traffic on Kenai Avenue was continually problematic. July 18th and 19th were the most

KENAI POLICE DEPARTMENT

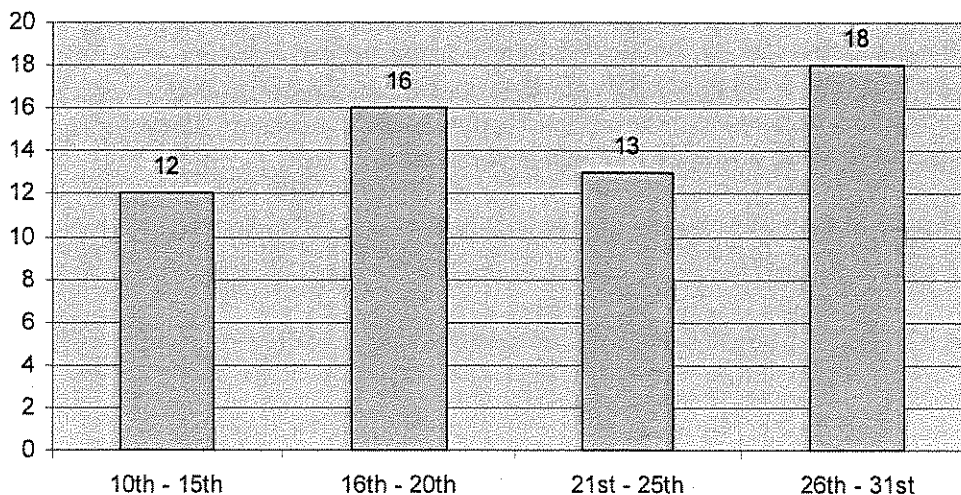
problematic days on Kenai Ave. SEOs spent numerous hours of their shifts attempting to decongest the traffic-jams arising from the mass influx of people. On these two days, the night shift SEO worked overtime to manage the traffic. A group of missionaries aided in traffic control also, which was a new development this year.

Alaska State Wildlife Troopers were a continuous presence during this year's dipnet fishery. They patrolled the beaches at varying times in both plain clothes and in uniform. Their patrols added extra enforcement presence, as well as assisted in increasing dipnet user's lawfulness.

Dipnet Fishery Statistics

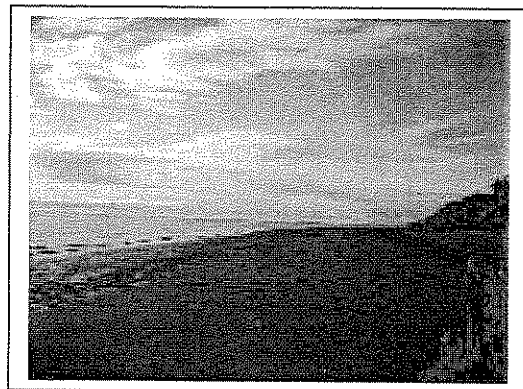
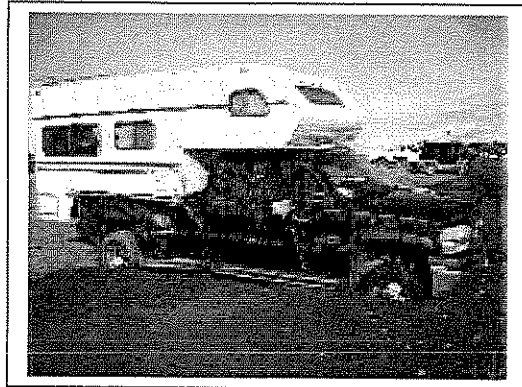
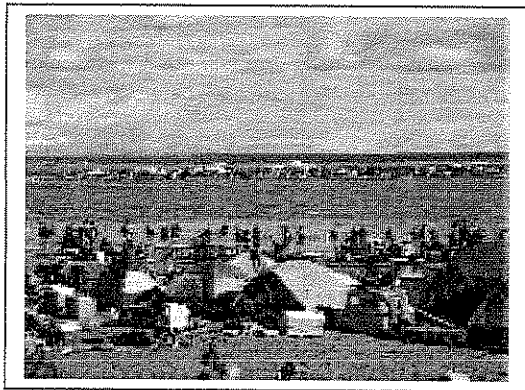
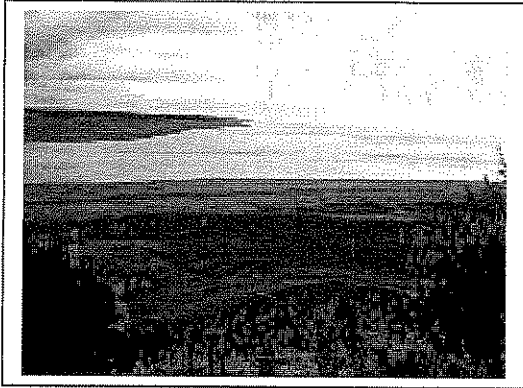


ST1's By Date



KENAI POLICE DEPARTMENT

Dipnet Fishery Documentation



KENAI POLICE DEPARTMENT

Specific Observations And Concerns

Handicapped parking in the N. Beach parking lot near the entrance is currently marked with only one permanent sign. The handicapped zone is marked by a blue stripe painted on the barriers. The majority of handicapped parking violators stated they did not see the blue stripe and thought the only handicapped-parking zone was directly below the permanent sign. Several more permanent signs would help curb the parking violations.

Camping violations on the beach were a time consuming part of beach patrol for SEOs. The majority of these beach camping violations consisted of campers being within 25 feet of any vegetated areas. Due to insufficient signs, one small paper sign on the shack window and a mentioning on the camping regulations sign, many people set up camp much too close to the dunes. There were many complaints by the campers who stated the City of Kenai needed to post bigger and more numerous signs in the camping areas. Another way to solve this problem would be to set up the orange fencing at least 25 feet away from any vegetation.

The path leading from the small parking area on S. Forest down to the beach was another problematic area that could have used more fencing. The path leading to the beach consists of a stairway and then a dirt path that ends up at the beach near the fencing surrounding the sewer treatment facility. The orange fencing that was set up did include parts of this path but did not extend to the bottom of the stairway. SEOs contacted civilians climbing over the fence due to this lack of fencing.

Kenai Avenue has consistently been an area of congestion during the dip-net fishery. A major cause of this congestion is the width of the road. Currently, Kenai Ave is not wide enough for the kind of traffic that occurs there. During the course of a day many citizens wishing to access the beach drop off and pick up gear at one of the three path entrances that lead to the beach. By stopping their vehicle these citizens block half the roadway, which leads to congestion. If the road was to be widened, at least to a three-lane width, this problem would disappear and overall traffic congestion in the area would drop. Another addition that would help the area would be a barrier between lanes, this would allow cars traveling outbound to not be stopped by cars traveling inbound who are trying to park or maneuver around parked vehicles. Yet another idea for halting the congestion would be to completely close down Kenai Avenue during the dip-net fishery and conduct a shuttle service to the end of the road.

KENAI POLICE DEPARTMENT

In the City of Kenai the only place to camp is on the beach. Unfortunately few people know about this recent change and continue to camp in areas such as Municipal Park and the Kenai Municipal campground. This is yet another case of insufficient sign posting.

The area between the N beach entrance and the S Forest is supposed to be a no parking area. There is one sign at the entrance of N Beach stating parking prohibited before S Forest. This sign is a good start to solving the problem however few people from out of town know where S Forest drive is located. Some signs alongside the "no camping" and "no fires" signs stating "no parking" would be suitable.

It was observed that in response to the large quantity of traffic violations occurring on the beach many signs were put up in the problematic areas, such as the handicapped zone and the city vehicle parking area. These signs were made of laminated paper stapled to a post and placed in a traffic cone. These signs were quickly destroyed by the elements. This attempt was appreciated by the SEOs while the signs were readable and reinforces the need for permanent signs.

During the course of one traffic stop conducted by two SEOs on N Beach with an ATV it was mentioned that the signs to the left of the entrance are not clear. The father of the ATV rider stated that he interpreted the "no vehicles beyond this point" signs to mean no cars beyond that point. A couple signs could be added specifically stating "no ATVs beyond this point" to clear up any misconceptions regarding the traffic laws on the beach.

One observation made by the SEOs concerning the well being of the orange fence that was being jeopardized by the wide variety of articles being hung on the fence. People seemed to assume that the fence was a coat rack and hung their clothes and waders on the fence as well as leaned items such as fishing nets on the fence. This unwanted weight weakened the fence and lead to a higher rate of fence breakage.

Another observation made by SEOs was that the posted signs along the fence were a success in relation to the number of people inside the fence. The "no trespassing in the dunes" signs were well spaced and there was enough of them to make an effect on the populace.

Another observation made by several members of the Kenai Police Department concerns the amount of complaints generated by the area around the South beach entrance at the end of Old Cannery Road. That entrance received little traffic yet generated many calls to the towing companies. If the City of Kenai blocked off that entrance it would save time and money (one

KENAI POLICE DEPARTMENT

less shack worker). Old Cannery Road would have to become a no parking zone to prevent people from not paying to access the dip-net fishery, a relatively simple task.

During the course of the dip-net fishery several hundred people fish to the west of the entrance. These people have limited access to restrooms. If the City of Kenai was to put up port-o-potties on the beach in the area it would cut down on people using the beach as one big restroom.

Overview

There were no major problems during the 2008 dipnet fishery. The season began calm and continued to pick up until the third week of the season. Parking reached full capacity towards the second week, which required a lot of attention from the SEOs. Kenai Ave. continued to have traffic problems throughout the entirety of the season, but was mitigated by volunteer help.



"Village with a Past, City with a Future"

210 Fidalgo Avenue, Kenai, Alaska 99611-7794

Telephone: 907-283-3692 / FAX: 907-283-3693

MEMORANDUM

To: Gus Sandahl, Kenai Chief of Police
Lt. Kim Wannamaker, Kenai Police Dept.
Wayne Ogle, Public Works Manager
Terry Eubank, Kenai Finance Director

From: Robert J. Frates, Kenai Parks & Recreation Director

Date: October 7, 2008

RE: **Dip Net Report - 2008**

The amount of volunteerism and City labor dedicated toward this season separates this fishery from any other in year's past. The effort made toward protecting the beach dunes and increased personnel, coupled with volunteer labor provided the necessary management tools to minimize negative impacts.

Dip net participation levels overall did not appear to exceed last season. The higher fuel prices probably contributed somewhat to this phenomenon. However, use this season appeared to be more heavily concentrated toward the weekends, particularly the 19th and 26th and was alleviated somewhat during the workweek. The demand for trash removal and portable toilet pumping on the south shore suggests that use on this side remained very high the last two weeks of the fishery. The congested parking on the north shore may have caused more folks to consider the south shore as an alternative access point during this time.

The following summarizes important City contributions and notable enhancements provided by volunteer groups which contributed toward this season's success:

- * 5,130 volunteer man-hrs contributed by the North American Mission Board
- Nearly 200 man-hrs contributed by the Kenai Cross-Country Ski Booster Club
- Chain-link fence installed on Dunes Road bordering the parking lot near fee station
- Increased communication between City and Alaska Dept. Fish & Game
- Approximately 7,000 lineal feet dune protection fencing
- Protection of North and South Shore Ordinance
- Two (2) additional seasonal officers
- Two (2) additional park aides
- Fish totes for easy disposal of fish waste
- Public education efforts led by Lincoln Wensley's "Caring for the Kenai" dune protection video, Alan Poyner's Dunes and Don'ts article, Anchorage Daily News, City administration's Kenai River Personal Use Fishery brochure
- Dock ramp attendants during busy weekend
- \$5 increase in parking/camping fees

***Summary of North American Mission Board Volunteer Efforts**

- ✓ 215 Volunteers during two weekends (Fri, Sat, Sun)
 - ✓ 5,000 hotdogs distributed (free)
 - ✓ 500-600 gallons coco distributed (free)
 - ✓ 5,000 gallons water distributed (free)
- ✓ Provided fillet stations on beach, including knives & sharpeners
 - ✓ Provided activities for kids (168 participants)
 - ✓ Assisted with traffic & litter control
 - ✓ Assisted with fence mending

Litter and Fish Waste Control

Industrial Refuse, Inc. provided the necessary dumpsters and removal of bulk trash both on the north and south shore. Parks staff supplemented this effort by picking up trash on a daily basis along with the North American Mission Board during two weekends (Fri, Sat, Sun). The KCHS Cross-Country Ski Booster Club assisted with clean up half-day on Mondays and contributed approximately 84 man-hours.

Cost of removal of trash from bulk containers far exceeded the budget due to service level demands, particularly on the south shore during the weekends of the 19th and 26th.

Sanitation Facilities

S&R Enterprises provided portable toilet service throughout the fishery. Once again, costs were driven by the demand placed on service needs throughout the fishery on the south shore. Two additional portables were placed on the south shore this season and three additional portables were placed on the north shore to supplement the existing restroom at the end of Spruce Street. Far less complaints were generated this season than year's past.

Sand Dune Protection

Most notable was the installation of approximately 7,000 lineal feet of fencing to the north and south side dunes. A total of 120 man-hours were dedicated to the erection of fencing, 50 of which was through the use of volunteers (KCHS Cross-Country Ski Booster Club). The dune protection Ordinance passed by Kenai City Council provided the necessary controls to further protect the dunes from unwanted traffic. Fencing was marked with "No Trespassing" signs as well as a couple access points along the bluff.

Parking

Parking became congested during peak weekends but overflow was provided at the Kenai Little League fields. The parking lot was managed with the use of parks staff and also assisted with traffic control. As parking at the beach became full, signs were promptly placed on South Spruce Street in an effort to redirect traffic into the Little League complex. Parking/camping fees were collected. A total of 70 man-hours were spent directed toward this effort.

Parking along Old Cannery Road only became an issue later in the season when vehicles started to park in both right-of-ways. This generated one complaint by a resident and was promptly addressed by the Kenai Police Department.

Expense Summary

Materials & Contract Services

Portable Toilets	\$35,922
Dumpsters	11,690
Dunes Rd Fencing	8,100
Fencing	5,459
Fence Posts	3,771
Fish Totes	3,400

Receipt Books	1,057
Fee Envelopes	1,212
No Trespass Signs	1,443
Misc (propane, batteries, pens, etc.)	375
Info Brochures	300
Phone/Minutes	150
Estimated Fuel Costs	1,000
Sub-total	\$73,879

Rental Value (monthly)

1, 1 Ton	\$1,000
2, ½ Ton (1/4 time)	250
Sub-total	\$1,250

Labor

Shack Attendants (1,182 man-hrs)	\$20,822
Fence Installation (70 man-hrs)	708
Beach Aides ¹ (270 man-hrs)	3,137
Beach Cleanup During/After ² (130 man-hrs)	1,315
Misc. Support ³ (20 man-hrs)	202
Fee Collection at LL & Traffic Control (82 man-hrs)	1,305
Admin. / Meetings & Planning ⁴ (50 man-hrs)	2,541

Sub-total \$30,030

Grand Total Expenses \$105,159

¹ Labor costs are for two park aides assigned to beach for general patrol, litter/fish removal, fence work and assistance with traffic.

² Labor costs are for parks crew members supplementing work of Beach Aides for litter/fish removal, raking beach, fence mending and post-fishery cleanup.

³ Labor costs are for weeding trimming in parking lot on north shore, cleaning shacks, hanging signs, and getting change for shack operation.

⁴ Labor costs (benefits, etc.) for Director and Groundskeeper.

Boating Facility Expenses

Materials and Contracted Expenses

Portable Toilets	\$1,500
Dumpsters	500
Restroom Pumping	405
Receipt Books	1,057
Cleaning Supplies	200
Spray Paint	100

Sub-total \$3,762

Labor

Shack Attendants (323 man-hrs)	\$5,183
Dock Worker (144 man-hrs)	5,492
Dock Assist. (142.50 man-hrs)	5,080

Sub-total \$15,755

Grand Total Expenses \$19,517

Considerations for 2009

North American Mission Board

Brenda Crim with the North American Mission Board reported she is interested in organizing a volunteer group for next season's fishery. She is already in the preliminary planning stages and has a goal of increasing the number of volunteers by 30%. This would allow them to expand their services to the south shore. Additionally, they would like to double the number of fillet stations and provide rinsing stations.

Consideration should be given to meeting with Brenda during the winter season for coordination and planning purposes.

Fish Rinsing Station(s)

Consideration should be given toward providing rinsing station(s) on the north shore. One idea is to run piping from the sewer treatment plant into the parking lot giving participants access to running water at a centralized location. If this is not practical or cost prohibitive, Brenda Crim (North American Mission Board) is planning on volunteers running buckets of water up to the fillet stations.

Old Cannery Road Extension

2004 marked the last time Old Cannery Road Extension was temporarily closed during the dip net fishery. This eliminated a lot of unnecessary traffic for private residents living along this road and added an element of safety due to extreme difficulty accessing the beach from this location. Temporary closure was granted from DNR and consideration should be given to researching closure again for 2009.

Restroom Facilities

Due to the cost of providing portable restrooms on the north shore, consideration should be given to the construction of a permanent facility at the end of Kenai Avenue. This was discussed previously as a possible need, however, money was directed toward replacing the restroom facility at the north shore parking lot instead. Perhaps a restroom design and location could be included into a master plan for this area. See attached Financial Cost / Benefit Analysis.

Old Towne Signage

Consideration could be given to reviewing signage in Old Towne. This area receives a tremendous amount of traffic during the month of July from visitors and we need to ensure the appropriate signage is in place to eliminate traffic into unwanted areas or onto private property.

FINANCIAL COST / BENEFIT ANALYSIS

Project:

Kenai Avenue Restroom

Project Scope:

Project includes new construction of a concrete block restroom facility on the North Shore of the Kenai City beach at the end of Kenai Ave.

Purpose:

Goal of facility is to provide better service to the participants of the dip net fishery and eliminate some of the reoccurring annual costs related to renting portable toilets. Facility would also provide an ongoing service to recreational users in this area during the shoulder season, i.e., sport fisherman, beachcombers, picnickers, hikers, etc.

Estimated Costs:

New Restroom (approximately 15' x 40'):

- Concrete facility @ \$115,000

Maintenance Costs:

- Cleaning during dip net fishery (60 hrs) @ \$607
- Cleaning before/after dip net fishery (20 hrs) @ \$202
- Yearly pumping (1,000 gallons), twice @ \$510

Materials / Supplies:

- Toilet Paper @ \$175
- Disinfectant @ \$100
- Multi-fold Towels @ \$60
- Graffiti Removal @ \$50

Other Costs:

- Unplanned Maintenance (vandalism) @ \$500

Total cost: \$117,204

Benefits:

- Improved customer satisfaction
- Improved control of cleaning & frequency
- Eliminate estimated \$15,025 for services during dip net fishery (24 days)

Total Benefit Savings: \$15,025 ('08 Expenditure) - \$2,204 (Material/Maint. Cost) = \$12,821

Payback time: \$115,000 (construction costs) / \$12,821 = 9 years



"Village with a Past, City with a Future"

210 Fidalgo Avenue, Kenai, Alaska 99611-7794
Telephone: (907) 283-7535, Ext. 236 / FAX: (907) 283-3014



MEMORANDUM

TO: Gus Sandahl, Chief of Police

FROM: Wayne Ogle

DATE: 7 October 2008

SUBJECT: 2008 DIP NET SEASON; PUBLIC WORKS CONTRIBUTION

This is a summary of the support Public Works contributions to the City's Dip Net operations.

1. Signage on North Beach i.e. "No Fire", "No Camping", "Private Property"

<u>Workers</u>	<u>Hours Worked</u>	<u>Total Man-hrs</u>	<u>Rate</u>	<u>Cost</u>	<u>Total</u>
3	4	12	\$38.20	\$458.40	
<u>Equipment</u>	<u>Operating Hours</u>	<u>Total Equipment Hours</u>	<u>Rate</u>		
1 4x4 Truck	4	4	\$38.00	\$152.00	
1 City backhoe	4	4	\$47.50	\$190.00	\$800.40

2. Rebuild Beach Access Road on North Beach for Set Net Fishery.

<u>Workers</u>	<u>Hours Worked</u>	<u>Total Man-hours</u>	<u>Rate</u>	<u>Cost</u>	<u>Total</u>
4	8	32	\$38.20	\$1,222.40	
<u>Equipment</u>	<u>Operating Hours</u>	<u>Total Equipment Hours</u>			
1 966 Cat Loader	4	4	\$96.00	\$384.00	
1 Grader	4	4	\$120.00	\$480.00	
3 Dump Trucks	3	9	\$80.00	\$720.00	\$2,806.40



10 Truck Loads of Gravel		Yards (12 per truck; \$6/yd)		\$720	<u>\$720</u>
--------------------------	--	------------------------------	--	-------	--------------

3. Final Preparation for Dip Net Operations. This consists of setting toll booths and placing barricades (protection of toll booths) on North and South Beach areas.

<u>Workers</u>	<u>Hours Worked</u>	<u>Total Man-hours</u>	<u>Rate</u>	<u>Cost</u>	<u>Total</u>
5	8	40	\$38.20	\$1,528.00	
<u>Equipment</u>	<u>Operating Hours</u>	<u>Total Equipment Hours</u>			
2 966 Cat Loader with forks	2	8	\$96.00	\$768.00	
1 Flatbed Truck & Trailer	8	8	\$48.00	\$384.00	<u>\$2,680.00</u>

4. Parking lots and gravel roads are graded. Dust control is also applied.

<u>Workers</u>	<u>Hours Worked</u>	<u>Total Man-hours</u>	<u>Rate</u>	<u>Cost</u>	<u>Total</u>
5	24	120	\$38.20	\$4,584.00	
<u>Equipment</u>	<u>Operating Hours</u>	<u>Total Equipment Hours</u>			
14H	16	16	\$120.00	\$1,920.00	
140G	16	16	\$120.00	\$1,920.00	
Sander Truck (Small)	8	8	\$35.00	\$280.00	<u>\$8,704.00</u>

5. Retrieve Toll Booths & Barricades after Dip Net Operations. Remove event specific signage. Store in City yard.

<u>Workers</u>	<u>Hours Worked</u>	<u>Total Man-hours</u>	<u>Rate</u>	<u>Cost</u>	<u>Total</u>
5	8	40	\$38.20	\$1,528.00	
<u>Equipment</u>	<u>Operating Hours</u>	<u>Total Equipment Hours</u>			
2 966 Cat Loader with forks	2	4	\$96.00	\$384.00	
1 Flatbed Truck & Trailer	8	8	\$48.00	\$384.00	<u>\$2,296.00</u>

Summary: Public Works contributed the following in direct support to the City of Kenai's 2008 Dip Net Operations:

		Total Cost
Man-hours	244	\$9,320.80
Equipment Hours (rates vary)	93	\$7,966.00
Materials (yds of gravel)	10	\$720.00
Fuel Costs @ \$4.80/gal	312	\$1,497.60
Grand Total		<u>\$19,504.40</u>



"Village with a Past, City with a Future"

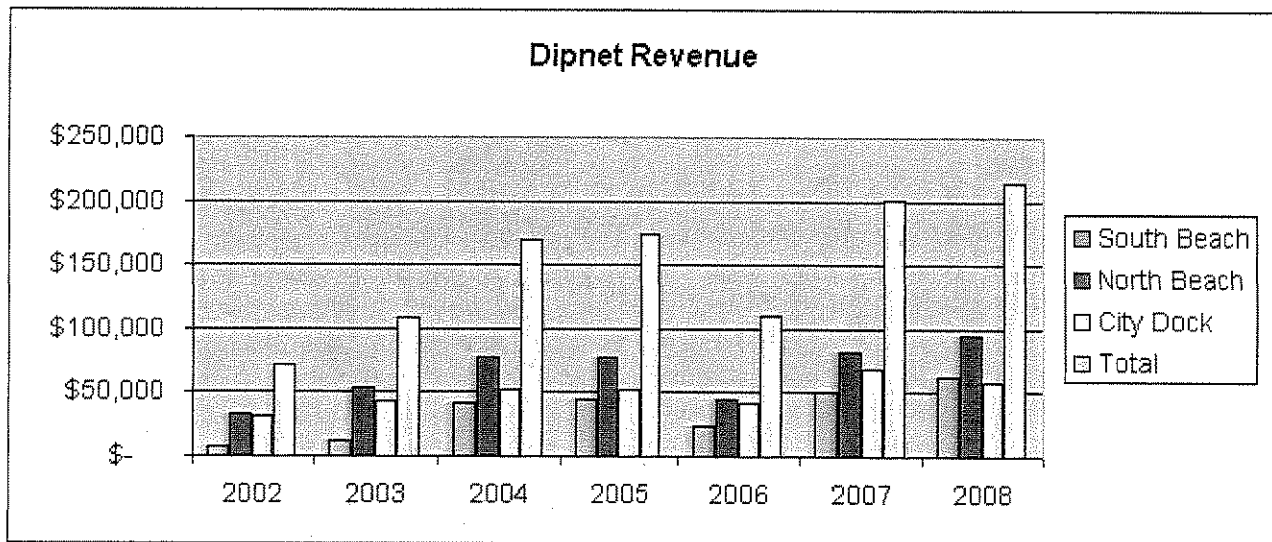
FINANCE DEPARTMENT
210 Fidalgo Avenue, Kenai, Alaska 99611-7794
Telephone: 907-283-7535 ext 221 / FAX: 907-283-3014

To: Rick Koch, City Manager
From: Terry Eubank, Finance Director
Date: September 19, 2008
Subject: 2008 Dipnet Summary

Revenue and Participants

The 2008 dipnet season concluded with total revenue of \$214,825, a 7.2% increase over the 2007 season. The 2008 season did include a 50% increase in user fees at the North and South Kenai Beaches while fees at the City Dock remained unchanged from prior years. The following is a breakdown of revenue by location from the 2002 season through this season.

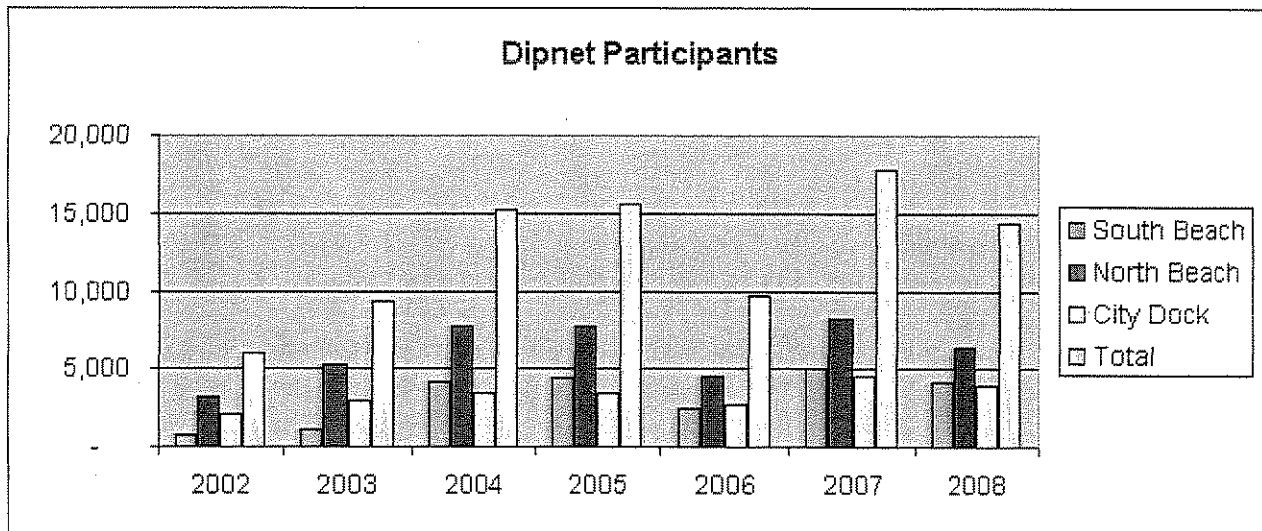
	<u>2002</u>	<u>2003</u>	<u>2004</u>	<u>2005</u>	<u>2006</u>	<u>2007</u>	<u>2008</u>
South Beach	\$ 7,261	\$ 11,336	\$ 41,465	\$ 44,078	\$ 24,153	\$ 50,418	\$ 61,820
North Beach	32,078	52,935	76,720	77,370	45,222	82,115	94,874
City Dock	31,546	43,654	51,770	52,017	41,115	67,812	58,131
Total	<u>\$ 70,885</u>	<u>\$ 107,925</u>	<u>\$ 169,955</u>	<u>\$ 173,465</u>	<u>\$ 110,490</u>	<u>\$ 200,345</u>	<u>\$ 214,825</u>



2008 Finance Department
Dipnet Summary

Total revenue increased in 2008 as a result of an increase in fees and not an increase in participants. The following represents an estimate of the number of participants by year. This is a very simple estimate and does not represent actual participant counts.

	<u>2002</u>	<u>2003</u>	<u>2004</u>	<u>2005</u>	<u>2006</u>	<u>2007</u>	<u>2008</u>
South Beach	726	1,134	4,146	4,408	2,415	5,042	4,121
North Beach	3,208	5,294	7,672	7,737	4,522	8,211	6,325
City Dock	<u>2,103</u>	<u>2,910</u>	<u>3,451</u>	<u>3,468</u>	<u>2,741</u>	<u>4,521</u>	<u>3,875</u>
Total	<u>6,037</u>	<u>9,338</u>	<u>15,269</u>	<u>15,613</u>	<u>9,678</u>	<u>17,774</u>	<u>14,321</u>



Parks & Recreation Department staff recalled very few comments from participants regarding the increase in fees. It is more likely the decrease in participants was a result of high fuel prices and the strength of the sockeye return.

Recommendation:

The increase in fees does not appear to have been detrimental and the fees are adequate to recover the costs incurred by the City. There does not appear to be a need for any additional fee increase.

Credit Card Acceptance

2008 represented the first season the City accepted credit cards for payment of dipnet user fees. The decision to accept credit cards was predicated on a goal of reducing the amount of cash on hand at the City's dipnet fee stations creating a safer work environment. An ancillary benefit expected was an increase in customer convenience. Of the \$214,825 in fees paid, only \$6,500 was paid using a credit card. This represent only 3.0% of the total fees collected. With the primary goal being to reduce cash on hand, the acceptance of credit cards does not appear to have been a beneficial tool. The total cost of credit card acceptance was substantial at approximately \$700 or nearly 10.8% of the total fees collected by credit card.

It appears the ancillary benefit of customer convenience was also not achieved. Because the City's fee stations are temporary structures with no permanent power or telephone access, the credit card machines used were portable and used cellular phone service for connectivity. According to reports from fee station attendants, the machines tended to operate slowly and experienced trouble connecting. Credit

2008 Finance Department
Dipnet Summary

card acceptance appears to have created slower customer service and greater frustration on the part of staff and customers.

Recommendation:

The acceptance of credit cards does not appear to have been successful in attaining any of our stated goals and may have even decreased participant satisfaction. Finance would recommend discontinuing the acceptance of credit cards until such time as permanent phone connectivity could be provided at the fee stations or the current technology overcomes the problems encountered this season. Finance plans to research other alternatives to meet our stated goals. Once such idea is the development of punch cards that can be purchased for multiple days and could potentially be made available via the Internet.

Fee Collection and Enforcement

Very few problems were noted in the fee collection and enforcement during this season. This speaks highly of the quality of employees operating the stations and the training they were provided by the Parks and Recreation and Finance Departments.

Concern was expressed over the difficulty in enforcing daily camping fees. Enforcement officers found it difficult to determine if fees had been paid, as many camps were vacant during their patrols. Signage showing verification of payment was not required at campsites.

Recommendation:

Annual training will be reviewed, updated or enhanced, and provided to all employees working in the collection of fees. Signage will be required at campsites in future seasons. Research is being done to find a cost effective way to display payment verification easily at campsites.

Conclusion:

Overall the 2008 dipnet season was a success from the Finance Department's perspective. It is anticipated that the implementation of the Department's recommendations will assure future success. The safety of our employees continues to be our strongest focus with reducing the amount of cash present at fee stations our number one priority.

2008 DIPNET REVENUE EXPENDITURE SUMMARY

REVENUE

NORTH SIDE PARKING	\$ 94,874.00
SOUTH SIDE PARKING	61,820.00
CITY DOCK FEES	<u>58,131.00</u>

TOTAL INCOME **\$ 214,825.00**

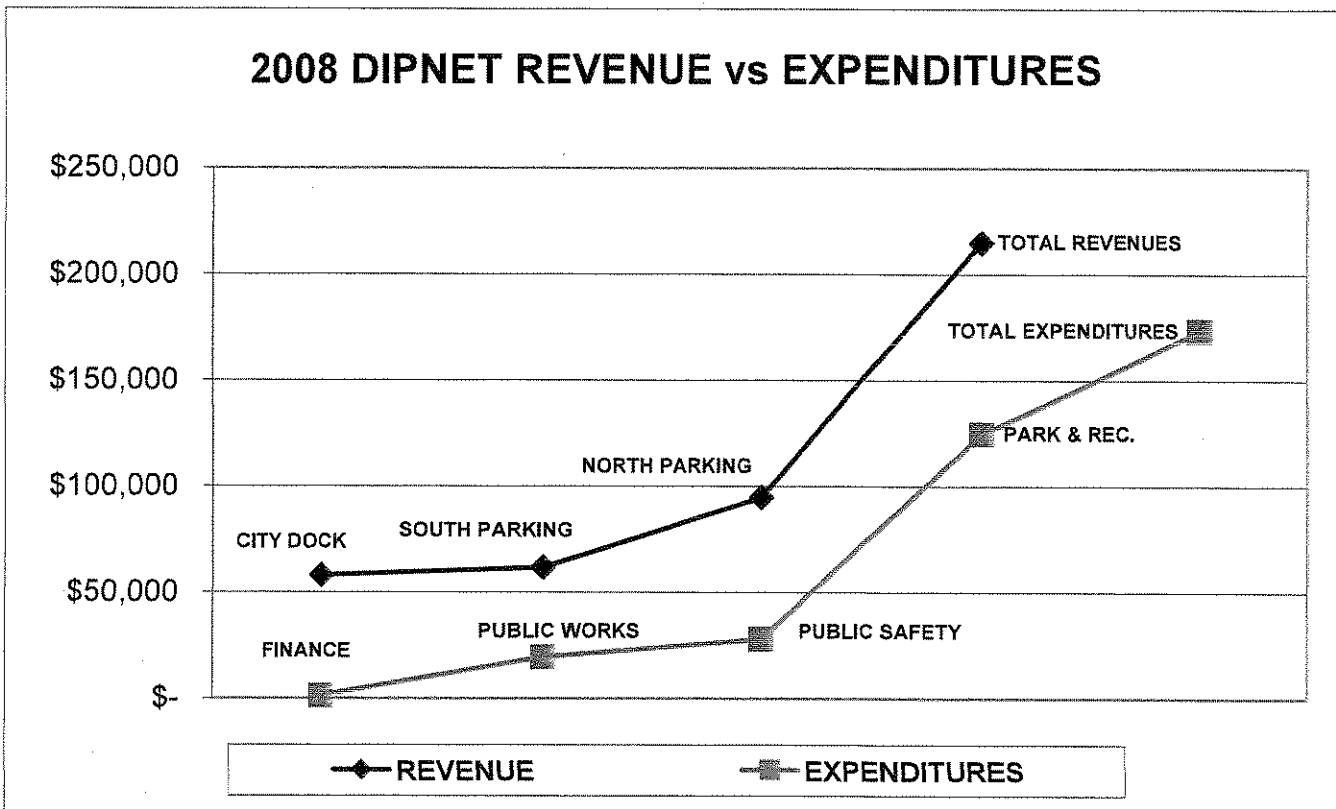
EXPENDITURES

FINANCE	1,147.74
PUBLIC SAFETY	27,877.28
PARKS & RECREATION	124,675.43
PUBLIC WORKS	<u>19,504.40</u>

TOTAL EXPENDITURES **\$ 173,204.85**

REVENUES OVER EXPENDITURES **\$ 41,620.15**

2008 DIPNET REVENUE vs EXPENDITURES



2008 DIPNET REVENUE SUMMARY

REVENUE

NORTH SIDE PARKING	\$ 94,874.00
SOUTH SIDE PARKING	61,820.00
CITY DOCK FEES	<u>58,131.00</u>

TOTAL INCOME	\$ 214,825.00
---------------------	----------------------

2008 DIPNET REVENUE

CITY DOCK FEES
\$58,131 - 27%

NORTH SIDE PARKING
\$94,874 - 44%

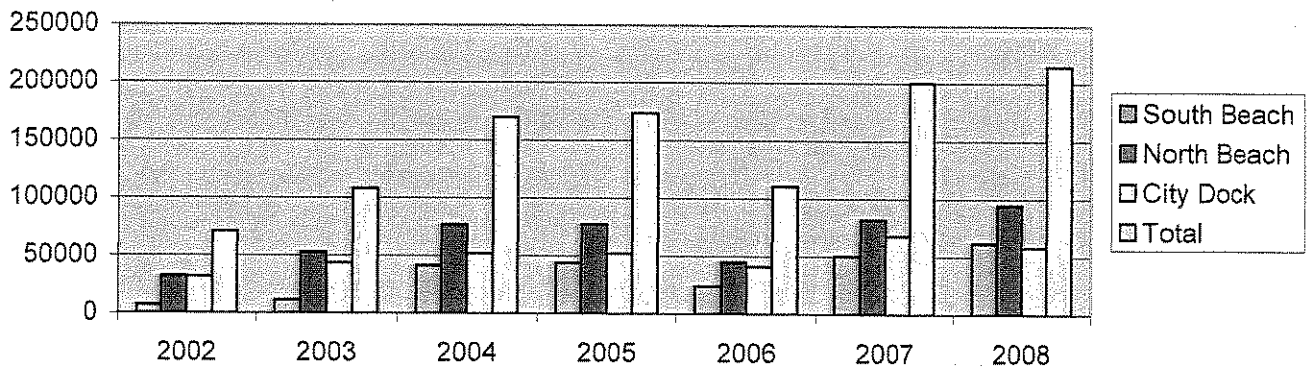
SOUTHSIDE PARKING
\$61,820 - 29%

■ NORTH SIDE PARKING

■ SOUTH SIDE PARKING

□ CITY DOCK FEES

Dipnet Revenue



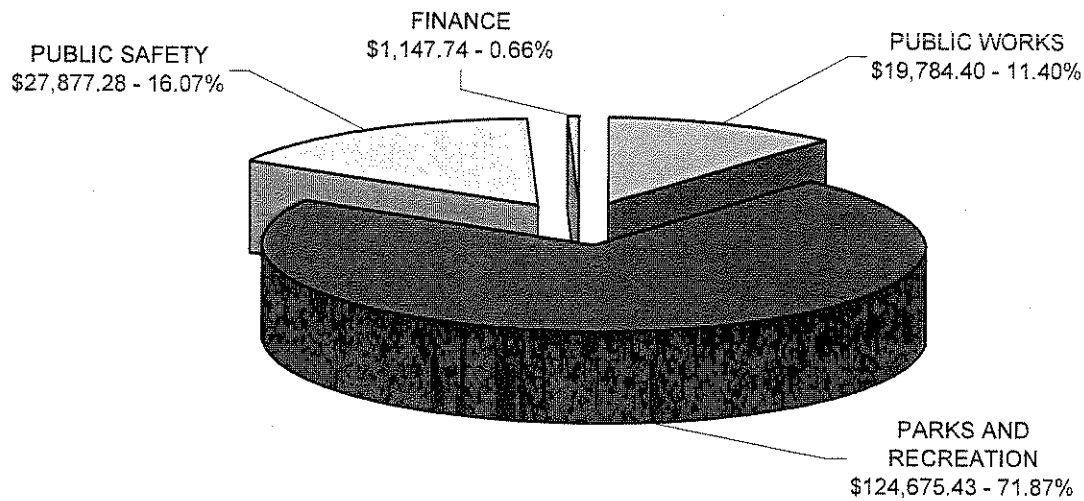
2008 DIPNET EXPENDITURE SUMMARY

EXPENDITURES	QUANTITY	UNIT COST	TOTAL
FINANCE			
STAFF TIME			
DAILY CASH RECEIPT RECONCILIATIONS	33.00 HOURS	34.78	\$ 1,147.74
DIRECT EXPENDITURES			
CREDIT CARD ACCEPTANCE	1.00 EACH	700.00	700.00
TOTAL FINANCE			\$ 1,147.74
PUBLIC SAFETY			
STAFF TIME			
OFFICER PATROLS - REGULAR TIME	87.00 HOURS	48.00	4,176.00
OFFICER PATROLS - OVERTIME	126.00 HOURS	53.87	6,787.62
SEASONAL EMPLOYMENT OFFICERS	410.00 HOURS	14.97	6,137.70
PROJECT ADMINISTRATION - CHIEF	14.00 HOURS	58.00	812.00
PROJECT ADMINISTRATION - LIEUTENANT	46.00 HOURS	57.26	2,633.96
TOTAL PUBLIC SAFETY STAFF TIME			20,547.28
EQUIPMENT			
PICK-UP	1.00 MONTH	2,900.00	2,900.00
ATV	2.00 MONTH	700.00	1,400.00
TOTAL PUBLIC SAFETY EQUIPMENT			4,300.00
DIRECT EXPENDITURES			
FUEL	1.00 ACTUAL	3,000.00	3,000.00
TRAFFIC VESTS FOR VOLUNTEERS	1.00 ACTUAL	30.00	30.00
TOTAL PUBLIC SAFETY DIRECT EXPENDITURES			3,030.00
TOTAL PUBLIC SAFETY			\$ 27,877.28
PARKS AND RECREATION			
STAFF TIME			
SHACK ATTENDANTS - FULL TIME EMPLOYEES	78.00 HOURS	43.00	3,354.00
SHACK ATTENDANTS - TEMPORARY EMPLOYEES	1,427.00 HOURS	14.08	20,092.16
FENCE INSTALLATION	70.00 HOURS	11.61	812.70
BEACH AIDES	270.00 HOURS	11.61	3,134.70
BEACH CLEAN-UP	130.00 HOURS	11.61	1,509.30
TRAFFIC CONTROL AT LITTLE LEAGUE FIELDS	82.00 HOURS	11.61	952.02
DOCK STAFF TIME	286.50 HOURS	43.90	12,577.35
PROJECT ADMINISTRATION - DIRECTOR	60.00 HOURS	55.87	3,352.20
TOTAL PARKS AND RECREATION STAFF TIME	2,403.50		45,784.43
EQUIPMENT			
PICK-UP 1 TON	1.00 MONTH	1,000.00	1,000.00
PICK-UP 1/2 TON	0.50 MONTH	500.00	250.00
TOTAL PARKS AND RECREATION EQUIPMENT			1,250.00
DIRECT EXPENDITURES			
PORTABLE TOILETS	1.00 ACTUAL	37,422.00	37,422.00
DUMPSTERS	1.00 ACTUAL	12,190.00	12,190.00
FENCING	1.00 ACTUAL	17,330.00	17,330.00
FISH TOTES	1.00 ACTUAL	3,400.00	3,400.00
RECEIPT BOOKS, FEE ENVELOPES, & BROCHURES	1.00 ACTUAL	3,626.00	3,626.00
SIGNAGE	1.00 ACTUAL	1,443.00	1,443.00
FUEL	1.00 ACTUAL	1,000.00	1,000.00
MISCELLANEOUS	1.00 ACTUAL	1,230.00	1,230.00
TOTAL PARKS AND RECREATION DIRECT EXPEN.			77,641.00
TOTAL PARKS AND RECREATION			\$ 124,675.43

2008 DIPNET EXPENDITURE SUMMARY

	<u>QUANTITY</u>	<u>UNIT COST</u>	<u>TOTAL</u>
PUBLIC WORKS			
STAFF TIME			
NORTH BEACH SIGNAGE	12.00 HOURS	38.20	458.40
REBUILD NORTH BEACH ACCESS	32.00 HOURS	38.20	1,222.40
DIPNET SHACK AND BARRICADE PLACEMENT	40.00 HOURS	38.20	1,528.00
PARKING AND ROAD GRADING	120.00 HOURS	38.20	4,584.00
DIPNET SHACK AND BARRICADE RETRIEVAL	40.00 HOURS	38.20	1,528.00
TOTAL PUBLIC WORKS STAFF TIME	244.00		9,320.80
EQUIPMENT			
PICK-UP	4.00 HOURS	38.00	152.00
BACKHOE	4.00 HOURS	47.50	190.00
966 LOADER	16.00 HOURS	96.00	1,536.00
FLATBED TRUCK AND TRAILER	16.00 HOURS	48.00	768.00
GRADER	36.00 HOURS	120.00	4,320.00
DUMP TRUCK	9.00 HOURS	80.00	720.00
SANDER TRUCK	8.00 HOURS	35.00	280.00
TOTAL PUBLIC WORKS EQUIPMENT			7,966.00
DIRECT EXPENDITURES			
GRAVEL	120 YARDS	6.00	720.00
FUEL	1 ACTUAL	1,497.60	1,497.60
TOTAL PUBLIC WORKS DIRECT EXPENDITURES			2,217.60
TOTAL PUBLIC WORKS			\$ 19,504.40
TOTAL EXPENDITURES			\$ 173,204.85

2008 DIPNET EXPENDITURES



PUBLIC WORKS
 PARKS AND RECREATION
 PUBLIC SAFETY
 FINANCE