

2007

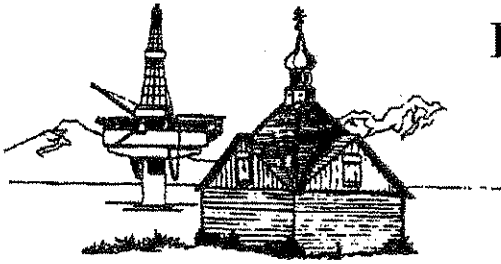
Kenai River Dipnet Fishery



July 10 - 31



The thousands of people pictured in this photo highlight the need for more than two (2) SEOs to manage the fishery



KENAI POLICE DEPARTMENT

107 SOUTH WILLOW STREET KENAI, AK 99611

Telephone (907) 283-7879

Fax (907) 283-2267

TO: Rick Koch, City Manager

FM: Lt. Kim Wannamaker

THRU: Chuck Kopp, Chief of Police *we*

RE: 2007 Kenai River Personal Use Dipnet Fishery

September 19, 2007

The Annual Dipnet Report is presented for your review. It includes reports from the Police, Public Works, and Parks and Recreation Departments. You will find a summary overview of Police Department activity specific to the Kenai River Dipnet Fishery to include observations, statistics, problems encountered, and recommendations for improvement. The Seasonal Enforcement Officer report is also attached.

The Kenai River Dipnet Fishery opened at 6am on Tuesday 7-10-07, and closed at midnight Tuesday 7-31-07. The 2007 Dipnet Fishery saw the largest number of State resident participation since the fishery opened in 1996. City departments prepared for anticipated & historical Dipnet Fishery-related challenges, resulting in effective overall management of the fishery.

Two part-time Seasonal Enforcement Officers (SEOs) spent the majority of their July shifts engaged in Dipnet Fishery related activity, with parking and camping violations being the significant portion of their enforcement/management focus.

The Police Department handled 153 Dipnet Fishery-related calls for service this year; 89 by sworn officers and 64 by SEOs. The majority of calls for service were cash pick-ups from the 4 pay shacks, followed by Parking complaints/violations, Citizen Assists (lockouts, lost children or pets), Noise/Disorderly Conduct, Trespassing on private property, Campfires in unauthorized areas, and several complaints each of Theft, Drunkenness, Vandalism, and vehicle collisions.

There were 18 vehicles impounded, nearly all for parking violations, and 4 people were arrested for various crimes, including one DUI on an ATV. There were no deaths or serious injuries this year.

Of the 90 hours spent by SEOs on the Dipnet Fishery, 75 were spent at the North Beach (S. Spruce). Police Officers spent 34.5 hrs on Dipnet Fishery-related activity. SEOs spent a lot of time patrolling the S. Beach on the Dept. 4-wheeler, which is a very practical manner to cover that large and often very congested area.

KENAI POLICE DEPARTMENT

State Fish & Wildlife Troopers were a visible presence at the City Dock, N. Beach, and on the water in a patrol vessel this year. They kept a relatively low profile but were very active enforcing various Fish & Game laws.

The greatest managerial challenge this season, as in years before, was parking. For the North Beach, overflow parking at the designated parking lot off S. Spruce Street, and motor vehicle/pedestrian traffic congestion on Kenai Avenue presented the most serious difficulties.

South Beach problem areas involved illegal parking and heavy traffic congestion on Dunes Road near the pay shack, and illegal operation of off-road vehicles on dunes and vegetated wetland areas. The Dunes Road parking is troublesome because it is on Borough land, in which the Alaska State Troopers have jurisdiction for enforcing traffic & criminal offenses (parking, trespass). The Police Department will work with Troopers to provide a better collective response to Dunes Road this next season.

Four pay shacks to collect user fees were placed in the same locations as previous years: S. Spruce Street at the beachfront parking lot, Boat Launch Road at the City Dock, Dunes Road and Old Cannery Road. No pay shacks were run over this year, or otherwise incurred damage.

Police Department Labor, Equipment and Fuel Expenses

Police Officers (34.5 hrs)	\$1030
S.E.O. (90 hrs)	1260
Pre & Post season meetings/planning (Chief, Lt, SEO)	1000
Equipment & Fuel costs*	1300
Total	\$4590

* Patrol cars & the Dept. pickup, and the 4-wheeler were equipment expenditures for the fishery. The costs included would reflect fuel consumption relative to driving to/from pay shacks, City Hall, police station, Kenai Ave, and up & down the beaches on the ATV, and idling during stops at these locations. Fuel was more expensive this year than last.

KENAI POLICE DEPARTMENT

2007 Observations

Signage deficiencies were documented. On the South Beach, SEOs responded to frequent complaints of ATVs and other vehicles in the vegetated areas. There is just one sign at the very end of the beach (river mouth) prohibiting operation of vehicles in wetland/grassy areas. On the North Beach at the end of Kenai Avenue there is an absence of signs requiring "5 minute loading/unloading" which contributed to traffic congestion.

Other signage improvement needs are addressed in the SEO report. On the whole, public awareness has improved with respect to parking, camping, campfires, and bathrooms due to good signage posted at/near all the pay shacks and pay/parking areas.

Public Information was available via commercial media, online sites such as the City of Kenai and Alaska Dept of Fish & Game, printed brochures distributed by the City, and radio public service announcements. This information included answers to FAQs for parking, fees, camping, campfires, dunes & grassy areas, restroom facilities, and contact information for State and City management entities.

Parking & Camping fees were the same as last year. The manned pay shacks contributed significantly to compliance, as did aggressive presence by police and SEO personnel. SEOs issued hundreds of written warnings for parking & non-payment, or for not displaying the parking permit.

On Saturday July 21, the busiest day in the history of the fishery, vehicles filled the N. Beach, S. Spruce parking lot, S. Spruce, the little league parking lots, N. Spruce nearly all the way to 4th Ave, and commercial parking lots along KSR near S. Spruce.

Restroom (port-a-potty) service was hindered due to traffic congestion along Kenai Avenue, and on South Beach due to vehicles parked in close proximity to the toilets. This interfered with the service provider being able to maneuver beside them for change-outs.

Off-Road Vehicles and associated violations are a recurring issue. Police & SEOs responded to multiple complaints of ATVs causing late night noise, racing, youth operators w/o helmets, and speeding on the beaches and access roads.

Dumpster service was overall satisfactory. There were several instances of traffic congestion at the end of Kenai Avenue, which prevented or slowed the garbage truck from getting to the dumpsters.

KENAI POLICE DEPARTMENT

Litter and Trash collection and management needs are significant for the three weeks of the Fishery. The possibility of providing more trash and fish waste collection points should be reviewed.

Traffic congestion on Kenai Avenue was severe, and the improved wide areas often were illegally used for extended parking along the "loading/unloading only" area. Kenai Avenue is a narrow one-lane dirt road with No Parking allowed at any point. During the Fishery, by necessity it becomes a 2-lane road with motor traffic and pedestrians. Vehicles often have objects hanging out the back or off the sides, and pedestrians are generally pushing or pulling objects, all of which takes more room than merely driving or walking. Couple this with numerous vehicles loading/unloading along the road and traffic congestion happens quickly.

Recommendations

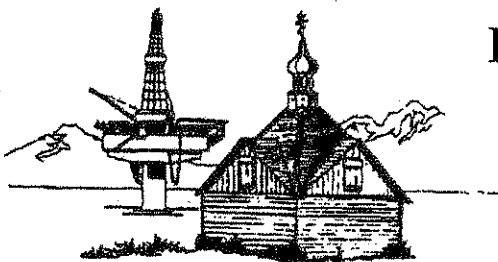
The recommendations and suggestions for improvement here are based on initial assessment. We expect to further refine our ideas for improvement following a multi-department debriefing in late September.

Coordinate with Little League to allow North Beach overflow parking in the Little League ball field lots on South Spruce Street. Some years there are post-season tournaments and the parking lot is needed for those involved with baseball. However, when there are no post-season baseball activities, that parking lot would be ideal for overflow dip netter parking.

Signage Improvements for the North Beach call for two (2) more signs at the Kenai Avenue turnaround stating "5 minutes loading/unloading", and for a more clearly marked Iron Ranger for self-pay participants. On the South Beach three (3) additional signs are needed that prohibit operation of vehicles in the wetland areas. Regulatory signs stating "No parking/stopping within 30 feet of restrooms" would help facilitate Restroom service.

Orange Barrier Fencing (along with improved signage) will help prevent South Beach wetlands and dune destruction. This fencing has been installed in previous years with the assistance of the Borough, but not for the past two seasons. Assistance with fencing should again be sought from the Kenai Watershed Forum.

Additional Public Safety Officer resources, beyond what is currently budgeted, are needed to effectively address the significant management needs of the Dipnet Fishery. The intensity of the issues highlighted in this report, would each be considerably lessened with 24-hour coverage of the fishery by public safety resources. Administration will discuss this internally to prepare a recommendation.



KENAI POLICE DEPARTMENT

107 SOUTH WILLOW STREET KENAI, AK 99611

Telephone (907) 283-7879

Fax (907) 283-2267

To: Lt. Wannamaker
Cc: Chief Kopp *W*
From: SEOs Goggia & Caswell
Date: 8/4/2007
Re: Seasonal Enforcement Officer Report
2007 Kenai River Dip Net Fishery

This report is a summary of Seasonal Enforcement Officer observations and recommendations concerning the 2007 Kenai River Personal Use Dip Net Fishery.

The fishery opened Tuesday July 10, 2007 at 0600 hours and closed Tuesday July 31, 2007 at 2359 hours. On Wednesday July 25, 2007 at 1100 hours the Alaska Department of Fish and Game gave an emergency order to open the dip net fishery to 24 hours daily until the closure.

The placement of pay stations remained the same as last year, with stations being placed on South Spruce, Dunes Rd., Old Cannery Rd., and at the City Dock. Payment also remained the same, \$10 for 12 hour parking and \$10 for 12 hour camping, until the fishery was opened 24 hours daily upon which the fee for 24 hour camping was \$10.

Enforcement of fees on both beaches was for the most part successful due to the placement of payment booths and the use of "iron rangers" when the attendants of the pay shacks were not available. SEOs also helped to enforce fee compliance. The pay shacks were attended 24 hours a day once the dip net fishery went 24 hours daily. There were minor problems with people not paying enough due to confusion about \$10 per 12 hours.

The first week of the fishery was relatively slow due to minimal amounts of salmon. The parking lot at both the North and South beaches remained less than 50% full until the weekend of Saturday, July 14. Seasonal Enforcement Officers (SEOs) issued 44 parking warnings, one citation for a minor operating an ATV without a helmet, and one tow truck was called. Two children were reported missing as well as part of the parking lot needing to be evacuated due to a propane leak on an RV that required Kenai Fire Department attention and deportation.

KENAI POLICE DEPARTMENT

On Saturday, July 14 the number of vehicles and people increased exponentially. The North Beach parking lot was completely full, and at times overflowing. The majority of SEOs time was spent at the North Beach enforcing fees for parking and vehicle congestion on Kenai Avenue. SEOs also issued many ATV warnings for not wearing helmets and riding in prohibited areas. Traffic on Kenai Ave. was congested throughout the day, which led to one tow truck being called. However, the owner contacted SEOs and paid the tow truck driver before the vehicle was impounded. Also, on July 14 an SEO dealt with a man riding an ATV, which was pulling a trailer with several young children on it who were not wearing helmets. Upon contacting the operator, the SEO determined that he might intoxicated, which led to the request of another officer to do Field Sobriety Testing. The driver was indeed intoxicated and was arrested for DUI.

During the second week of the dip net fishery a large number of warnings for parking and ATV use were issued. Nine (9) vehicles were impounded. More illegally parked vehicles would have been impounded but owners arrived in time to pay the tow agency. Also, six (6) citations were issued for parking to the left (east) of the beach access on South Spruce.

Throughout the second week of the dip net fishery, both beaches were consistently 75-85% full. At the beginning of the week the fish began to come in abundance, leading to a massive influx of people. SEOs spent most of their time at the North Beach enforcing traffic and the 5 – 10 minute parking areas on Kenai Ave. as well as checking camping and parking receipts, but maintained a strong presence at the South Beach.

Saturday, July 21 was by far the busiest day of the season with both North and South Beach parking lots at 100% capacity. The parking lot at the North Beach was overflowing by about 0500 hours. SEOs spent significant portions of their shifts controlling traffic on Kenai Ave.

Another problem was overflow parking of vehicles on the beach due to lack of room in the parking lot at the end of South Spruce. Normally parking on the beach is only allowed to the right (west) of the beach access, and vehicles must proceed past the line of South Forest Drive. However, due to the abundance of vehicles parked prior to the South Forest line, vehicles were allowed to park to the right as long as they did not block access to the beach. SEOs clearly marked the access lane with cones to indicate where vehicles could or could not park. Vehicles not in compliance were impounded and/or warned. In addition, people began parking to the left of the beach access where it is clearly posted "no motor vehicles beyond this point". SEOs fought many of the same battles on Sunday, July 22.

KENAI POLICE DEPARTMENT

On Wednesday, July 25 ADF&G gave an emergency order to open the dip net fishery to 24 hours daily until the end of the season on Tuesday, July 31. Generally the dip net fishery is opened to fishing 24 hours daily when there is a large increase in the Kenai River salmon population. Unfortunately, the number of fish began to decrease after the emergency order was given. This emergency order caused another influx of people during the last week even with the dwindling number of fish. The best fishing of this dip net season was during the middle of the second week.

During the final week, both beaches consistently remained 70-80% full. SEOs continued to focus on parking and camping compliance. Throughout this week the parking lot at the Little League ball field was opened for use by dip netters. Parking was not as significant of a problem compared to prior weeks even though there were many people. Also, during this week five (5) vehicles were impounded, numerous parking/ATV warnings were issued, and there was one vehicle abandoned below the high tide line.

Saturday, July 28 and Sunday, July 29 were the last days of the fishery. Both beaches were crowded again, but people seemed to be self-maintaining. On the South Beach SEOs received many complaints of ATVs riding in the wetlands and grassy areas. There is only one sign stating that vehicles are prohibited in the wetlands, which led to a general lack of knowledge about regulations concerning the area. On Sunday, July 29, one person was cited for this offense.

The City Dock continued to require little attention from SEOs due to last year's addition of two new ramps, an exit road, and overflow parking. The only problem that required police attention was a hit and run of a boat trailer. The trailer had a broken board from being run over by another truck's tire, but the owner of the trailer did not wish to pursue the matter.

Tuesday, July 31, 2007 the 2007 Kenai River Personal Use Dip net Fishery was officially closed at 2359 hours. SEOs spent a total of 90 hours on dip net related activities during the 2007 personal dip net fishery; 75 hours on the North Beach and 15 hours on the South Beach. SEOs also responded to or initiated 101 dip net related calls for service, and issued eight (8) dip net related citations.

KENAI POLICE DEPARTMENT

SPECIFIC OBSERVATIONS & CONCERNS

Overview

During the 2007 dip net fishery there weren't any major problems, other than a shortage of staffing to address problems at earlier stages before they became more of a management challenge. Information and regulations regarding parking, camping, and waste collection were contained in brochures distributed by the pay shack attendants.

The season began relatively calm, with the majority of people arriving during the second and third weeks of the fishery. Traffic, parking and congestion on Kenai Ave. consistently required the most time and attention. On busier days people inevitably parked in no parking zones and blocked lanes in the parking lot and Kenai Ave. Camping on both beaches never reached full capacity. Camping issues that the SEOs were involved with generally involved checking payment receipts.

NORTH BEACH

The North Beach required more time and attention from SEOs throughout the dip net fishery. Parking was limited and filled up quickly during busy days, which led to traffic jams that kept people from traveling in and out of Kenai Ave. SEOs dealt with more ATV use violations on the North Beach due to more restrictions than on the South Beach.

Parking in the Little League parking lot, closed to dip netters for the majority of the season, was opened on Saturday, July 28 for a fee of \$10 for every 12 hours of parking. Because Little League games happen rarely during the Dipnet fishery, opening the parking lot for dip netters would help alleviate parking issues on South Spruce.

Improper parking and traffic on Kenai Ave. required the most attention from SEOs throughout the fishery. The road and turnaround are intended for five to ten minute loading and/or unloading of gear. However, people tended to take longer than the allotted time for these activities. Vehicles were also left unattended, causing traffic backups. SEOs spent entire shifts clearing traffic jams and impounding parked vehicles during the busier days. A suggestion for this problem is to create a lane for outgoing traffic to minimize competition between incoming and

KENAI POLICE DEPARTMENT

outgoing traffic. There need to be at least two more signs stating "five to ten minutes for loading/unloading" at the end of Kenai Ave.

This year there were also problems with parking on the beach. Vehicles should be parked to the right of the beach access past the line of South Forest Dr. However, on days when the beach was busy, vehicles would fill up the entire beach to the right of the South Spruce access with parking. Eventually SEOs marked the access lanes onto the beach with cones, which allowed vehicles to park on the beach as long as they didn't block the access lanes. This should be done at the beginning of the season next year.

At the North Beach there are limited areas where ATVs are allowed. They are allowed to the right of the beach access off South Spruce, but they are not allowed on the roadways or to the left of the South Spruce access. SEOs received complaints and inquiries about ATV use on the left side of the beach because it was not specifically marked that ATVs could not be used for the pick up of fish. Also, there is a trail starting in the parking lot on South Spruce that leads to Municipal Park at the end of South Forest where ATVs are prohibited. There were several warnings given to children operating ATVs on this trail and into the park.

The majority of parking and camping payment issues occurred when the fishery was only open from 0600-2300 hours. SEOs spent significant time checking parking and camping receipts, and issuing warnings to those who hadn't paid. In most cases people just forgot to display their receipt where it was visible to SEOs. Iron rangers also seemed to have a higher success rate than other years. The combination of the iron rangers and pay shacks is very effective, and should be continually used in future years. However, the iron ranger should be marked more clearly to reduce the amount of pedestrians who go to the pay shack and back up traffic on South Spruce.

On the last day of the fishery, there was a problem with vehicles parking in the "City Vehicles Only" zone. Several people that were warned complained that it wasn't very clear that there is no parking allowed in that spot. As of now there is only a white spray-painted message on a concrete barrier stating "City Vehicles Only", and one No Parking sign at one end of the concrete barrier. More signs need to be added along the concrete barrier so it is clear to dip netters that it is for City vehicles only.

KENAI POLICE DEPARTMENT

SOUTH BEACH

Although the South Beach required less attention from SEOs, public safety presence was still required. Self-supervision was easier due to fewer restrictions on the South Beach concerning parking, camping, ATV use, etc. Most of the SEOs time spent there was checking parking and camping receipts and warning people on ATVs about helmet regulations for their children.

A reoccurring problem was overnight parking in the parking lot on Dunes Rd. In past years, vehicles, especially RVs, inevitably parked overnight in this parking lot, and this year was no exception. However, the parking lot is in the Alaska State Troopers' jurisdiction. Many people leave their vehicles and trailers in this parking lot overnight and bring camping gear onto the beach. In future years it may be considered to allow people to park their vehicles overnight and camp on the beach.

Along the beach there are grassy areas where vehicles are prohibited, yet there is only one sign posted at the end of the beach. SEOs received numerous complaints of people riding their ATVs into the wetlands and dragging large logs out for bonfires. When contacted, people claimed they did not know vehicles weren't allowed in that specific area. At one time there was bright orange fencing along the grassy area, but it has fallen down throughout the years. More signs stating "no vehicles" and/or more orange fencing need to be put up. SEOs also issued many warnings to children not wearing helmets while operating ATVs. Fortunately many were cooperative and either put on a helmet or stopped riding.

Another issue on the South Beach was a 2002 Nissan Frontier that was left below the high tide line. The vehicle was left there for several days, and the owner of the vehicle could not be contacted. As time passed, people/nature began to beat up the vehicle, tearing off the bumper, breaking windows and generally destroying the vehicle.



"Village with a Past, City with a Future"

210 Fidalgo Avenue, Kenai, Alaska 99611-7794

Telephone: 907-283-3692 / FAX: 907-283-3693

MEMORANDUM

TO: Chuck Kopp, Chief of Police
Lt. Kim Wannamaker, Kenai Police Department
Jack LaShot, Public Works Manger

FROM: Robert J. Frates, Parks & Recreation Director

DATE: September 18, 2007

RE: Dip Net Report - 2007

The volume of people participating in the 2007 fishery separates this from previous seasons. It is this elevated participation that resulted in some higher costs, namely for portable bathroom services. The popularity of the fishery also resulted in extra challenges ranging from parking issues, pedestrian traffic on dunes, litter, and other associated issues.

From an operational standpoint, this was the first year the dock operation was assigned to the Parks Department. The additional ramps and exit road provided a much-improved service this season and allowed more boats to be retrieved and launched. Dock personnel did an excellent job preparing for this year's dip net season and effectively met their challenges along the way.

Fee shack attendants randomly surveyed dip net participants during the 2007 fishery. Participants were asked if they live in the City of Kenai, live on the Kenai Peninsula, or live elsewhere. Of the 6,330 surveyed, approximately 90% indicated they live elsewhere, 7% live on the Kenai Peninsula and 3% live in the City of Kenai.

The following outlines some miscellaneous suggestions for next season along with this year's operational cost.

Suggestions for Next Season

Portable Restrooms & Dumpster on Dunes Rd:

Due to the heavy public use of the parking lot off Dunes Road near our fee station, portable restrooms and dumpster service is suggested to accommodate the public.

Better Coordination With Restroom/Dumpster Service Provider:

Contractor had difficulty during the peak season gaining access to his equipment stored on Old Cannery Road due primarily to parking of vehicles. Signage and fencing helped but will need to be done prior to season next year. Servicing of restrooms on the south side required the contractor to make two trips during the peak season due to the number of people and increased use.

Contractor also had difficulty during peak season (July 16th – 24th) gaining access along Kenai Avenue, particularly Saturday and Sunday resulting in a delay of services.

Litter & Fish Waste:

Consideration should be given to ways to effectively provide and manage garbage collection stations on the beaches as well as providing an easy means of depositing fish waste.

Sand Dune Protection & North Beach Access:

Continue exploring ways to protect the dunes from pedestrian and vehicle traffic. Beach road access during one weekend became very congested making passage difficult for commercial fishing operators. Access road needs better defined with cones and signage to prevent this from happening.

Traffic Controllers at City Dock:

Consideration should be given to placing a couple personnel at the City Dock during peak times and weekends to facilitate loading & unloading at the ramps, parking, and exiting the facility.

Designated Ramps at City Dock:

Designating one ramp specifically for loading and another for launching may contribute to a smoother operation. This is not typically the procedure used at the dock but may be worth exploring.

Parks and Recreation Expenses

Material, Supplies & Services

Portable Toilets	\$18,900
Dumpsters	10,250
Receipt Books	1,099
Misc. (propane, batteries, etc.)	505
Dip Net Brochures	300
Phone/Minutes	135
Fuel	100

Total **\$31,289**

Labor

Wages (fee station attendants) \$27,300

Wages (Admin, clean-up, prep, etc.) 1,700

Total **\$28,800**

TOTAL MATERIAL, LABOR, SERVICES **\$60,089**

Boating Facility Expenses

Material, Supplies & Services

Portable Toilets \$1,500

Dumpsters 500

Receipt Books 500

Minutes 135

Cleaning Supplies, etc 100

Spray Paint 80

Total **\$2,815**

Labor

Wages (fee station attendants) \$5,250

Wages (Dock Manager 1/2) 1,620

Wages (Dock Worker 1/2) 1,075

Wages (painting, signs, etc.) 450

Total **\$8,395**

TOTAL MATERIAL, LABOR, SERVICES **\$11,210**



"Village with a Past, City with a Future"

210 Fidalgo Avenue, Kenai, Alaska 99611-7794
Telephone: (907) 283-7535, Ext. 236 / FAX: (907) 283-3014



MEMORANDUM

TO: Chuck Kopp, Chief of Police
CC: Lt. Kim Wannamaker, Bob Frates
FROM: Jack La Shot, Public Works Manager
DATE: September 13, 2007
SUBJECT: Dip Net Fishery 2007

The following is a recap of Public Works efforts in support of the 2007 dip net fishery. The department had less involvement this year due to the assignment of dock operations to the Parks Department.

Support Operations

- Yearly removal of the mud accumulation on the ramps, dike construction and hauling of the mud off site after dewatering.
- Set and remove dock ramps.
- Move and remove shacks and concrete barricades at beach entrance sites.
- Place two concrete barricades at the end of Main Street for traffic control.
- Blade the South Spruce parking lot once and Kenai Avenue twice. Haul and place gravel from the parking area onto the beach entrance.
- Place and maintain numerous regulatory signs at various locations.



Capital Construction

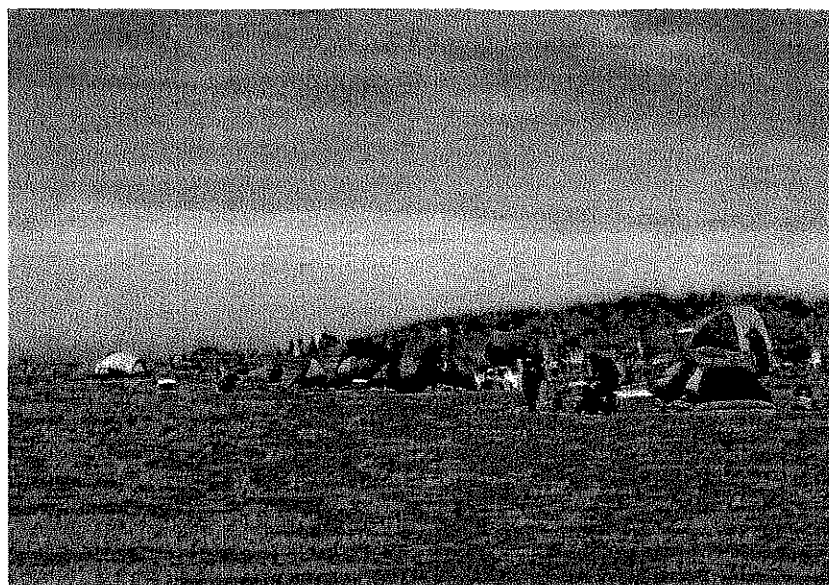
- Haul, place and grade gravel at the over flow parking area adjacent to the exit road.

Estimated Expenses

Operations	\$18,721
Capital Construction	\$12,134
Total	\$30,855



North Beach



North Beach



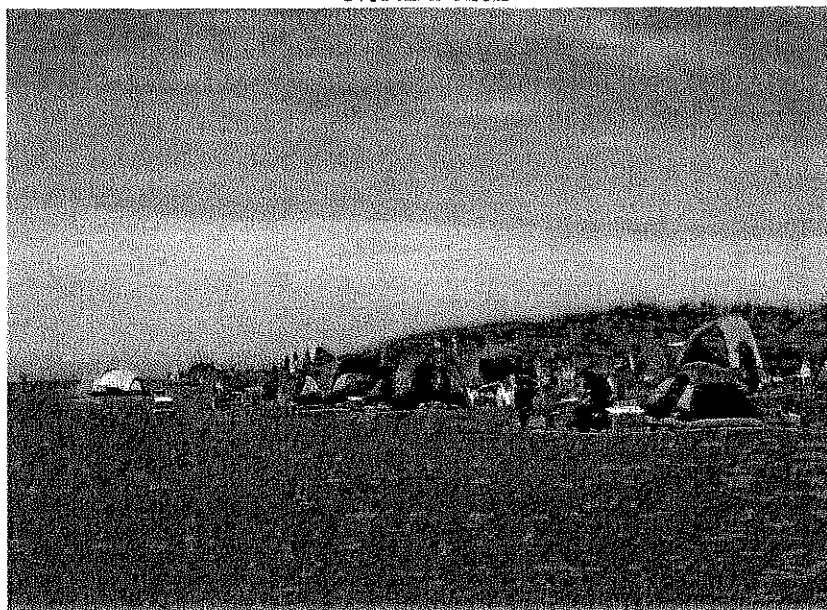
South Beach



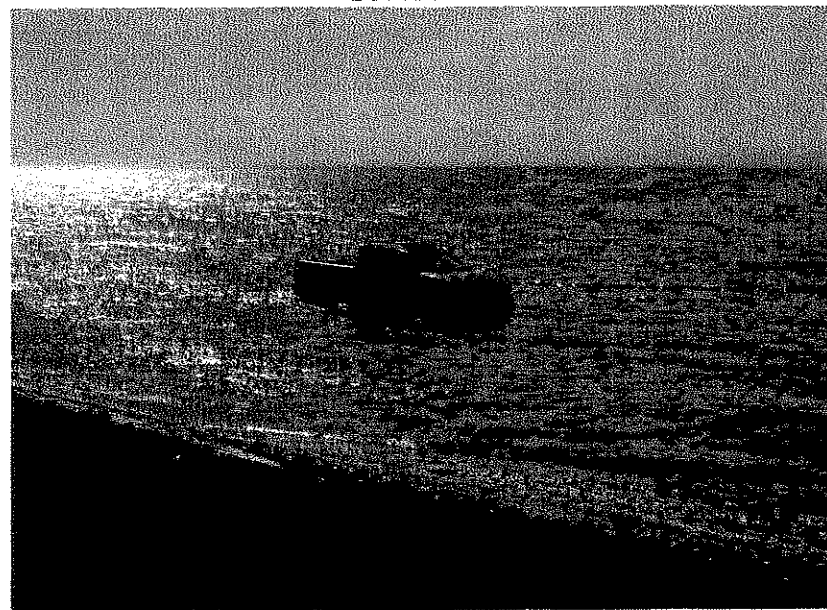
North Beach

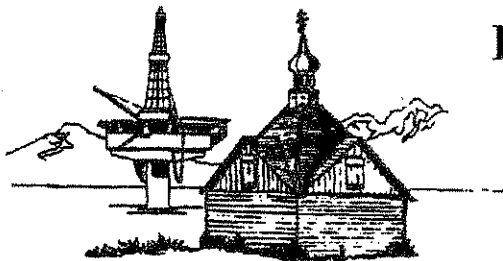


North Beach



South Beach





KENAI POLICE DEPARTMENT

107 SOUTH WILLOW STREET KENAI, AK 99611

Telephone (907) 283-7879

Fax (907) 283-2267

TO: Rick Koch, City Manager

FM: Chuck Kopp, Chief of Police *CK*

RE: **Dipnet Fishery Management Recommendations**

DT: September 27, 2007

City Administration has now reviewed operational reports and observations from all departments involved with the management and oversight of the Kenai River Personal Use Dipnet Fishery. This review process has distilled several recommendations Administration is prepared to move forward with for the 2008 Dipnet Fishery.

Administration Recommendations

1. Update Kenai Municipal Code 13.30.080 Operating a vehicle in a prohibited area, to include language that exempts City Public Works and Maintenance vehicles, and their agents, from the provisions of this Chapter. Public Safety vehicles currently have an exemption in this Chapter. The recommended exemption for maintenance vehicles will authorize service of trash and fish waste receptacles by off-road vehicles on the North and South shore during the course of the fishery.
2. Update Kenai Municipal Code 13.40.020 Off-road vehicle operation, to include language that exempts Public Safety vehicles from the provisions of this Chapter. Current language states "*It shall be unlawful for any person to operate an off-road vehicle in the City of Kenai...*" and lists prohibited areas for off-road vehicle operation. The only exception currently allowed is for maintenance vehicles as identified in subsection (j) *Notwithstanding the provisions of this section, the City or State, or their agents, may operate machinery or off-road vehicles in otherwise prohibited areas for maintenance, repair, cleaning and upkeep.* The recommended exemption for Public Safety vehicles will clear up any disparity of exemptions between KMC 13 and 14.
3. Provide high visibility barrier/crowd control fencing on both North and South Shore to protect dunes and vegetated wetlands from pedestrian and motorized traffic.

Cost estimate: \$4,000.00 – To purchase 5,000 feet (50ct - 4'x 100' rolls) of fencing.

KENAI POLICE DEPARTMENT

4. Signage Improvements - North Shore

Two (2) *5-minute load/unload* signs on Kenai Avenue at the turnaround.

One (1) high visibility *Pay Here* sign for Iron Ranger (self-pay) station.

Thirty (30) *Keep off Dunes - \$100 Fine* signs to be placed on both sides of dunes.

Signage Improvements - South Shore

Fifteen (15) *Keep off Wetlands - \$100 Fine* signs to be placed on beach in front of vegetated wetland grass areas.

Cost estimate: \$4,000.00

5. Public Safety Officer personnel increases are needed to effectively manage the Dipnet Fishery 24/7 during the high usage times of Thursday – Sunday. The attached staff reports clearly show the sheer numbers of dipnetters overwhelming current personnel resources to address fishery management issues during peak use periods.

Administration recommends two (2) additional Seasonal Enforcement Officers (SEOs) and one Public Safety Officer (PSO) FT position to provide 24/7 coverage Thursday – Sunday, and significant coverage Monday – Wednesday. Additionally, the PSO will provide year round support to sworn police officers, the Animal Control Department, and Code Enforcement Officer.

The SEO positions were originally budgeted to support a broad level of service requests during the summer months, as well as provide Dipnet Fishery support. These positions have evolved into almost exclusively a Dipnet Fishery support position, with very little support directed to other seasonal activity increases handled by the police department.

Position justifications and actual costs will be submitted through the FY09 budget process.

KENAI POLICE DEPARTMENT

Public Safety Officer Cost estimate:

Two (2) part time SEOs (pay/benefits/OT) -	\$20,000.00
One (1) full time PSO (pay/benefits) -	*\$16,250.00

6. Parks and Recreation personnel increases are needed to address litter patrol, trash and fish waste receptacle change outs, barrier fence repair and maintenance, camping and parking assistance to SEOs and other fishery support duties. Administration recommends two (2) additional Parks and Recreation seasonal employee positions to address these needs.

Cost estimate: Two (2) Parks and Rec seasonal emp. (pay/benefits/OT) \$15,000.00

7. Garbage and Fish Waste service improvements are needed to address significant litter and fish waste issues on the North and South shore. Administration recommends placing pairs of trash & fish waste containers at 400' intervals for about 2,000' along both shores. A "roll-on/roll-off" 20 - 30 yard dumpster would be placed on Kenai Avenue and Dunes Road to regularly service these containers. Administration would need to consider the purchase of a 1-Ton flatbed truck with crane to service these trash & fish waste receptacles, or contract it out to a service provider. As recently done for the North Shore, Administration recommends making a donation of \$7,500.00 to a non-profit or school sports booster club that is willing and able to provide regular litter patrol/clean up duties on the South shore during the fishery.

Cost estimate: \$7,500.00 for South shore litter patrol
\$5,000.00 for trash & fish waste receptacle service

* Public Safety Officer Total Cost Estimate is \$65,000. ¼ of this cost (\$16,250.00) is borne by Dipnet Fishery revenues, with the remaining \$48,750.00 coming from General Fund to support year round Police operations, off-road vehicle municipal ordinance enforcement, code enforcement, animal control matters, etc.

KENAI POLICE DEPARTMENT

8. North Shore Parking continues to see the most urgent need for improvements. Administration recommends that the City coordinate with the Little League program to allow North Beach overflow parking in the Little League ball fields and parking lots on South Spruce Street. If there are no post-season baseball activities, this area would be ideal for overflow dip netter parking.
9. Administration further recommends that the City explore the purchase of Anchor Trailer Court property, in whole or in part, to address long term municipal parking needs for beach front recreational activity, Little League, Kenai River Personal Use Dipnet Fishery and Special Events parking.

Total cost for implementation of Administration recommendations is approximately \$75,000.00, excluding the possible purchase of additional property for parking.

DIP NET PARKING AND L-RAMP REVENUE 2007

COLLECTION DATE	NORTHSIDE PARKING	SOUTHSIDE PARKING	DOCK	2007 DAY TOTALS	2007 CUMULATIVE	2006 DAY TOTALS	2006 CUMULATIVE	2005 CUMULATIVE
07/10/07	710.00	276.00	947.50	1,933.50	1,933.50	2,250.00	2,250.00	6,158.50
07/11/07	1,245.00	390.00	675.00	2,310.00	4,243.50	2,509.00	4,759.00	9,003.50
07/12/07	1,710.00	590.00	867.50	3,167.50	7,411.00	3,276.00	8,035.00	13,344.50
07/13/07	3,752.00	1,840.00	1,245.00	6,837.00	14,248.00	4,530.00	12,565.00	20,932.50
07/14/07	2,717.90	2,668.00	2,565.00	7,950.90	22,198.90	5,188.00	17,753.00	28,621.50
07/15/07	2,966.00	1,475.00	2,435.00	6,876.00	29,074.90	7,275.00	25,028.00	39,359.25
07/16/07	2,100.00	1,160.00	2,105.00	5,365.00	34,439.90	7,431.00	32,459.00	48,895.25
07/17/07	6,000.00	3,447.00	2,240.00	11,687.00	46,126.90	6,343.00	38,802.00	66,592.25
07/18/07	3,840.00	1,715.00	3,855.00	9,410.00	55,536.90	8,445.60	47,247.60	73,950.25
07/19/07	3,760.00	2,559.00	3,764.00	10,083.00	65,619.90	8,774.00	56,021.60	82,361.25
07/20/07	5,260.05	4,510.00	5,741.00	15,511.05	81,130.95	10,140.00	66,161.60	90,346.25
07/21/07	4,200.00	4,525.00	4,500.00	13,225.00	94,355.95	16,122.00	82,283.60	103,033.25
07/22/07	3,570.00	2,110.00	4,080.00	9,760.00	104,115.95	0.00	82,283.60	114,363.25
07/23/07	6,690.00	1,440.00	4,273.50	12,403.50	116,519.45	0.00	82,283.60	126,609.25
07/24/07	3,370.00	2,065.00	3,522.50	8,957.50	125,476.95	0.00	82,283.60	136,190.54
07/25/07	3,760.00	2,325.00	6,454.50	12,539.50	138,016.45	0.00	82,283.60	141,072.54
07/26/07	4,001.77	2,220.00	2,865.00	9,086.77	147,103.22	0.00	82,283.60	145,487.54
07/27/07	6,800.00	4,330.00	4,030.00	15,160.00	162,263.22	0.00	82,283.60	148,891.54
07/28/07	3,250.00	3,550.00	3,845.00	10,645.00	172,908.22	0.00	82,283.60	151,812.54
07/29/07	4,171.00	2,065.00	4,067.00	10,303.00	183,211.22	0.00	82,283.60	157,563.54
07/30/07	2,299.00	1,090.00	1,045.00	4,434.00	187,645.22	0.00	82,283.60	163,328.54
07/31/07	5,941.75	4,067.75	2,689.00	12,698.50	200,343.72	4,680.50	86,964.10	173,464.85
08/01/07	0.00	0.00	0.00	0.00	200,343.72	0.00	86,964.10	173,464.85
08/02/07	0.00	0.00	0.00	0.00	200,343.72	0.00	86,964.10	173,464.85
08/03/07	0.00	0.00	0.00	0.00	200,343.72	0.00	86,964.10	173,464.85
08/04/07	0.00	0.00	0.00	0.00	200,343.72	2,165.00	89,129.10	173,464.85
08/05/07	0.00	0.00	0.00	0.00	200,343.72	6,319.95	95,449.05	173,464.85
08/06/07	0.00	0.00	0.00	0.00	200,343.72	4,870.00	100,319.05	173,464.85
08/07/07	0.00	0.00	0.00	0.00	200,343.72	3,210.00	103,529.05	173,464.85
08/08/07	0.00	0.00	0.00	0.00	200,343.72	3,115.40	106,644.45	173,464.85
08/09/07	0.00	0.00	0.00	0.00	200,343.72	1,485.00	108,129.45	173,464.85
08/10/07	0.00	0.00	0.00	0.00	200,343.72	2,360.00	110,489.45	173,464.85
	\$82,114.47	\$50,417.75	\$67,811.50	\$200,343.72	\$200,343.72	\$110,489.45	\$110,489.45	\$173,464.85

NORTH/SOUTH SIDE PARKING -----	\$132,532.22
DOCK LAUNCH/PARKING -----	\$67,811.50
TOTAL -----	\$200,343.72