

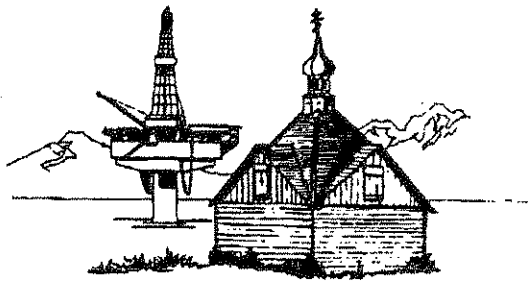
Info-6

# 2006

## Kenai River Dipnet Fishery



July 10-21, July 31, August 3-10



KENAI POLICE DEPARTMENT  
107 SOUTH WILLOW ST., KENAI, AK 99611  
Telephone (907) 283-7879  
Fax (907) 283-2267

TO: Rick Koch, City Manager

October 3, 2006

FROM: Lt. Kim Wannamaker *KW*  
Keith Kornelis, Public Works Manager *KK*  
Bob Frates, Parks & Rec Director *BF*

CC: Chuck Kopp, Chief of Police

RE: 2006 Kenai River Personal Use Dipnet Fishery

The 2006 Dipnet Report includes this summary memo highlighting significant observations, statistics, expenses, and things to consider for next year. Activity reports of Police, Parks & Rec, Public Works, and Seasonal Enforcement Officers are attached.

The dipnet fishery opened & closed three different times this year. The anticipated and usual opening was Monday, 7-10-06 at 6am; the first closure was midnight on Friday night July 21. Fish & Game re-opened the fishery for 17 hrs on July 31 (6a-11p). Following a late glut of salmon entering the Kenai River, Fish & Game re-opened the fishery again at 6am on August 3<sup>rd</sup> and left it open 24/7 thru midnight on Thursday August 10.

The City of Kenai was well prepared for anticipated & historical dipnet-related challenges, and the multiple opening/closing of waters caused only minor issues for personnel scheduling, equipment allocation, and public relations.

As in years past, the Police Department hired two non-sworn, unarmed, Seasonal Enforcement Officers (SEO) whose primary responsibilities centered around the dipnet fishery. The SEO were on duty 7 days a week with overlapping schedules and they worked cooperatively with Parks & Rec, and City Dock personnel. The SEO were responsible for City Code enforcement, specifically camping, ATV use, off-road vehicle operations and parking.

The Police Department handled 100 dipnet-related calls for service this year, compared to 234 last year, and 203 in 2004. This year's calls for service included **cash pick-ups** from the pay shacks & iron rangers, **ATV** complaints, vehicle **crashes** (including 4 collisions with pay shacks, one of which was demolished), citizen **disputes**, driving complaints, lost property, thievery, vandalism, fireworks, parking, fireworks, and drugs. One vehicle was impounded for illegal parking, 2 citations were issued for driving in prohibited areas, and hundreds of warnings (verbal and written) were issued for failure to pay and illegal parking.

---

---

KENAI POLICE DEPARTMENT

---

---

There were no fishery-related arrests or deaths this year, but there was one LifeGuard helicopter response & landing on the south beach to receive a heart attack/drowning victim and transport them directly to Anchorage.

Sworn police officers spent 34 hrs and SEO spent 98 hrs on dipnet-related activity. Two 4-wheelers were utilized to patrol the beaches and respond to areas inaccessible to patrol vehicles; one of the 4-wheelers was loaned to the Department by the A.B.W.E. Soldotna Post.

Fish & Wildlife Troopers maintained a low-key presence at the beaches, issuing many citations & summonses for various fishing and license offenses.

Four pay shacks were manned by Parks & Rec personnel in the same locations as last year: S. Spruce, Dunes Rd., City Dock, and Old Cannery Rd.

Police Department labor expenses for the 2006 dipnet fishery included:

Police Officers (34 hrs)	\$1011
Seasonal Enforcement Officers (98 hrs)	1323
Pre & Post-season meetings and planning (Chief, Lt, SEO)	1000
Equipment & Fuel costs*	1000
<b>Total</b>	<b>\$4,334</b>

\* Patrol cars, the Dept. pickup, and two 4-wheelers were equipment expenditures for the fishery. The costs incurred in this category would reflect fuel consumption by the vehicles, driving to/from pay shacks, City Hall, police station, Kenai Ave and up & down the beaches on the ATV, and possibly idling time at any of the mentioned locations. With this in mind, an estimate of use would range from as little as 30 gallons to upwards of 100 gallons of gasoline.

---

## KENAI POLICE DEPARTMENT

---

### 2006 Observations

#### Signage

The "Master Sign" posted near the pay shack on the N. Beach was very helpful to disperse information to the arriving public and should continue to be used with updated information as appropriate.

#### Public Information

Media reporting of the fishery, directions & instructions, and general information was helpful when disseminated in a timely manner. The ADF&G website contained comprehensive information for the public and was a good resource for all who took the time to use it.

Brochures handed out at the pay shacks, Department personnel, and at City Hall also provided useful information on just about everything a person would want to know, to be informed, while participating in the Kenai dipnetting.

#### Paid Parking

The manned pay shacks encouraged compliance with the paid parking areas as well as payment by those wishing to overnight camp. When the pay shacks were not manned, people tended to park/camp without paying, with the honest minority dropping payment in the iron ranger(s). Those vehicles not displaying receipts were stickered, and if the driver/owner was found, the majority claimed ignorance and made immediate effort to pay in the presence of uniformed personnel.

There was not the volume of participants this year as last, which resulted in fewer parking problems.

#### Restrooms

There were minimal complaints about restroom facilities this year. A new structure was erected near the intersection of Kenai Avenue/S. Spruce. It was aesthetically pleasing and heavily used. The port-a-potties on both beaches were serviced regularly and their locations provided easily-accessed relief.

#### Camping

Many people on both beaches set up tents and there were few actual problems associated with them. The problems that did arise concerned blocking other pedestrian access areas, and tents

---

## KENAI POLICE DEPARTMENT

---

erected in the grassy dunes areas; these tents were moved with minimal grumbling after people were made aware of better locations to put their tents.

There were camping complaints about tents & vehicles along the base of the bluff on the N. Beach, below the residential area W of S. Forest ext. Everyone contacted was compliant with being asked to relocate after being advised of the no camping/fires rules for that area.

### Off-Road Vehicles

ATV complaints ranked #3 for dipnet-related complaints. The complaints included loud machines/racing, late night riding, and kids riding w/o helmets. The Department scheduled dedicated patrol time to monitor & enforce ATV offenses on the N. Beach, and SEO made regular contacts with riders and parents on both beaches. Often, the violations were not observed by officers, and the machines were absent upon arrival.

### Dumpster Service

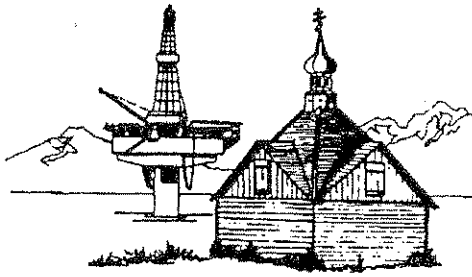
Fewer people create less trash, and the less tidy among them left evidence of their presence on both beaches during the fishery and upon their departure. There were no complaints of overflowing dumpsters, which were well-placed in easily-accessible areas.

### Traffic Congestion/Kenai Avenue

An annual problem consisting of a narrow access road, limited turnaround space, lack of consideration for others and courtesy by motorists. This year was no different than the past; in the absence of enforcement authorities, people tended to park & load/unload where they wanted and for however long they wanted, often creating unnecessary congestion and the emotions that accompany that.

Many vegetated areas along Kenai Avenue ended up with well-used trails between Kenai Ave and the beach, due to people parking in the widened areas and carting their stuff up & over the dunes instead of driving to the end of Kenai Ave and unloading/loading in the designated area. The wide spots put along Kenai Avenue have become load/unload areas for those not wanting to drive another couple hundred yards.

For additional information on the 2006 dipnet season, see the attached department reports and photos.



# KENAI POLICE DEPARTMENT

107 SOUTH WILLOW STREET KENAI, AK 99611

Telephone (907) 283-7879

Fax (907) 283-2267

## Memo

**To:** Lt. Wannamaker

**From:** SEOs Goggia & Reed

**Date:** 8/2/2006

**Re:** 2006 Kenai River Dip Net Fishery

The information included in this report is a summary of the Personal Use Dipnet Fishery that took place at the mouth of the Kenai River beginning on Monday, July 10, 2006 through Friday, July 21, 2006, Monday, July 31, 2006, and Thursday, August 3, 2006 through Thursday, August 10, 2006.

The fishery opened Monday, July 10, 2006 at 0600 hours. Due to a very poor sockeye return, the Alaska Department of Fish and Game closed the fishery Friday, July 21, 2006 at 2300 hours. On Monday, July 31 the dip net fishery was reopened for one day due to a late run of sockeye. Throughout the dip net fishery the hours for fishing remained 0600-2300 hours. On Thursday, August 3, 2006 the dip net fishery 24 hours a day until Thursday, August 10, 2006. Four pay stations were set up, including one on S. Spruce, City Dock, Dunes Rd., and Old Cannery Rd. Payment remained the same as past seasons, \$10 for 12 hours parking, and \$10 for 12 hours camping. Parking fee compliance was high due to pay booth attendants, and constant enforcement by the Seasonal Enforcement Officers (SEOs). There still were few instances of people not paying when the pay booths were unattended, and confusion of \$10 only lasting for 12 hours.

The first week of the fishery was relatively slow due to poor fishing. Most of the SEOs time on the North beach was spent enforcing paid parking and camping. The parking lot didn't reach even half capacity until Saturday, July 16.

On the South beach SEOs spent a considerable amount of time checking parking and camping pay receipts. Payment compliance on the South beach was lower because many dip netters camp for several days and only passes the pay booth when they arrive and depart. Therefore many

## KENAI POLICE DEPARTMENT

people only end up paying for their first 12 hours, instead of continuing to pay by either using the "iron ranger", or the pay booth.

On Saturday, July 15 there was a large increase of people and vehicles on both the North and South beaches. Throughout the day the North beach parking lot remained between 75%-85% full. SEOs spent the majority of their time checking parking permits, and controlling the flow of traffic through Kenai Avenue. SEOs also contacted multiple juveniles riding ATVs without helmets. After being warned all riders were cooperative in either wearing a helmet or discontinuing riding.

A significant amount of time during the morning and early afternoon was spent warning campers that were located in the dunes along Kenai Avenue. Many had set up during the middle of the night, and were seeking shelter from a strong windstorm that began the day before. After being warned and asked to move all the campers were cooperative, but complained there were no signs informing them where they could or couldn't camp. During the first week SEOs issued 25 warnings for parking offenses, and 2 warnings for camping offenses. Although a tow truck was never called, there were several times that vehicles were almost towed, but no citations were issued. SEOs also responded to reports of swimmers on the sand bar, and a missing child.

On Sunday, July 16, SEOs made contact with several separate groups of individuals on North Beach who had built fires in the No Fires area. Most of these people were juveniles who were unaware of the No Fires rule. Later in the night, SEOs responded to a call to North Beach again, with complaints that there were people setting up tents in the No Camping area on North Beach. On the South Beach, SEOs issued several warnings to campers who had not paid for their parking/camping. Most of these contacts stated that they had arrived very early in the morning, and seeing that no one was at the Pay Shack, assumed that it was free to park/camp.

The rest of the second week through Friday, July 21 remained fairly busy. The North beach parking lot was constantly 80%-90% full through out the day. The majority of SEO's time was dedicated to patrolling the North beach, but a strong presence was also demonstrated on the South beach. Dip netters on the South beach policed themselves well, and there were rarely any complaints from anyone on the South beach. During the second week of the fishery SEOs spent the majority of their time enforcing the 5-10 minute loading/unloading policy on Kenai Avenue.

Throughout the second week SEOs received numerous complaints of ATVs in the prohibited area of the North beach. There was also a problem with vehicles parked between the beach access on South Spruce and South Forest. During the second week SEOs issued 20 warnings for parking offenses, 4 warnings for camping offenses, and impounded one vehicle.

---

---

## KENAI POLICE DEPARTMENT

---

On Wednesday, July 19 the Alaska Department of Fish and Game ordered the dip net fishery to be closed Friday, July 21 at 2300 due to the lack of sockeye salmon. This caused an influx of dip netters trying to get some fishing in before the season closed.

The last day of the fishery, Friday, July 21, was by far the busiest day of the season. The North beach parking lot was full by 0900, and more vehicles continued to arrive throughout the day. SEOs spent their entire shifts controlling traffic on Kenai Avenue, and in the parking lot. Vehicles began parking outside the medians in the early afternoon and were soon blocking exits out of the parking lot. SEOs either quickly asked the driver to move, or posted a warning on the vehicle. Traffic on Kenai Avenue became extremely congested in the late afternoon, and required SEOs full attention.

On Monday, July 31, 2006 ADF&G issued an emergency order to reopen the personal use dip net fishery for the last day of the season. This caught many people by surprise so the beaches were limited to mostly locals. The fishery ended at 2300 that night.

On Thursday, August 3, 2006 at 1700 ADF&G issued an emergency order to reopen the dip net fishery 24 hours a day until Thursday, August 10, 2006. Throughout the week both beaches remained relatively calm. On Saturday, August 5 there was an influx in people, but the North beach parking lot never exceeded over 60% full. During this week SEOs issued 5 warnings for parking offenses.

SEOs maintained a presence at the City Dock, but many of the past problems have been solved. This year two new ramps were built in order to speed up the launching time. There was also a new one-way exit road constructed that eliminated the long lines and traffic build up.

SEOs spent a total of 97 hours on dip net related activities during the 2006 personal dip net fishery; 63 hours at the North beach and 35 hours at the South beach. SEOs also responded to or initiated 36 dip net related calls for service, yet issued zero dip net related citations.

## SPECIFIC OBSERVATIONS AND CONCERNS

### OVERVIEW

Overall the 2006 dip net season was relatively low due to the poor return of sockeye salmon. Due to the fact that the dip net fishery was closed early, there wasn't the usual large increase of

---



---

## KENAI POLICE DEPARTMENT

---

people in the second and third weekends. The pay shacks continued to be helpful in providing useful information and collecting money. Although not as many people may have showed up this year, there were still issues regarding overflow parking on both beaches, and camping.

Camping was an issue primarily on the North beach. On the South there wasn't much of a problem because there is unlimited camping space as long as the camping fee has been paid. However, on the North beach there is limited space on the beach, and this creates more traffic along Kenai Avenue. When the beach becomes crowded, or the weather turns bad, people begin camping in the dunes. A solution would be to create more campsites within the city. The Municipal Park on South Forest Drive would be a prime candidate for a new campground. More camping space would reduce congestion on the beach and Kenai Avenue.

### **North Beach**

The North beach continued to require more attention from SEOs. There are more restrictions regarding camping, parking, ATV use, and motor vehicle use on the North beach than the South beach. Problems consisted of parking on Kenai Avenue, ATVs on the restricted area, unpaid parking, and lack of overflow parking.

This year the Kenai Little League Ball Fields did not provide overflow parking for the dip net fishery. Fortunately there wasn't the consecutive rush on weekends because the fishery closed early, but from the first weekend throughout the second week the North beach parking lot was full. People would park past the medians and on the beach between the beach access on South Spruce and South Forest because there was nowhere else to park.

SEOs received several complaints of people parking on Kenai Avenue. During the first weekend and second week of the fishery, traffic on Kenai Avenue became heavy and backed up. There was a problem with people taking more than the five to ten minutes provided for loading/unloading gear while parked along side of Kenai Avenue leaving only one lane for moving traffic. On the last day of the fishery traffic was so heavy that a large traffic jam was created. It took SEOs their entire shifts just to clear Kenai Avenue, and keep traffic moving. A suggestion to improve this problem is to post signs along Kenai Avenue, warning vehicles to load/unload within five to ten minutes or they will be towed. Another suggestion is to have shifts of volunteers stationed at Kenai Avenue from 0600-2300 to constantly direct traffic and keep an eye out for vehicles that have been parked for too long.

---

---

## KENAI POLICE DEPARTMENT

---

SEO's also received many complaints of ATVs riding on the restricted area of the beach. By the time SEO's arrived the ATVs were usually gone, but when SEO's left the ATVs would be right back on the restricted area. In some cases people just claimed they didn't know ATVs weren't allowed on that side of the beach because they're allowed on the other side. A suggestion to increase warning signs is to post another sign at the end of Kenai Avenue to eliminate ATV beach access at the end of Kenai Avenue.

This year the dip net fishery was only open between 0600-2300. The hours of the pay booths were also 0600-2300; therefore many parking problems occurred when the pay booths were closed. Many people don't understand the concept of the "iron ranger" on the North beach, so they didn't think it was necessary to pay if they pay booth was closed. A solution to improve the unpaid parking is to keep a volunteer or paid worker in they pay booth 24 hours even when the fishery is only open 0600-2300. This way there is always someone to receive payments and provide information on the fishery.

A new problem that occurred this year was damage to the pay booth on South Spruce. Throughout the fishery the pay booth was hit four times by RVs. Eventually the pay booth was moved up the street and cones were placed around it. There isn't much more that can be done to eliminate the problem except to place cones and signs around the booth.

### **South Beach**

The South beach received less of the SEO's attention than the North beach, however SEO's maintained a strong presence throughout the fishery. People on the South beach seemed to supervise themselves rather well. There is unlimited motor vehicle, camping, and parking access on the South beach, which eliminates many of the major problems that SEO's deal with during the fishery. Most of the SEO's time spent at the South beach was spent checking parking and camping permits.

Overall people on the South beach understood the concept of the parking fees and the "iron rangers". The pay booths on Dunes Rd. and Old Cannery Rd. were also only open 0600-2300, so many people arriving when the booths were closed didn't feel they were required to pay. Placing someone in the pay booths 24 hours a day could also solve this problem.

The parking lot on Dunes Rd. was constantly overflowing throughout the fishery with people parking along the road in the ditches. Enforcing parking on Dunes Rd. gets very complicated because everything to the left of the centerline on Dunes Rd. is Trooper's property. On the weekends the parking lot was so congested, incoming and outgoing traffic had problems getting

---

## KENAI POLICE DEPARTMENT

around the pay booth. A suggestion to improve the congestion is to move the pay booth away from the middle of Dunes Rd. near the parking lot.

Although there is unlimited ATV access on South beach, SEOs gave several warnings to minors riding without helmets. This was only a small problem, as most parents made sure their children were wearing helmets.

---

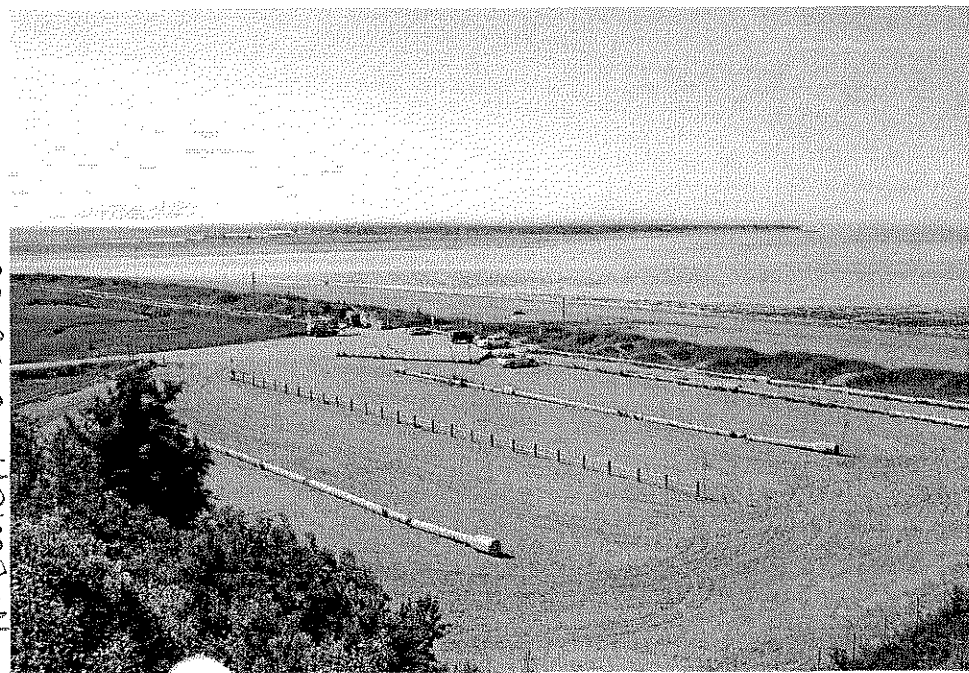
# Pre-Dipnet Pictures



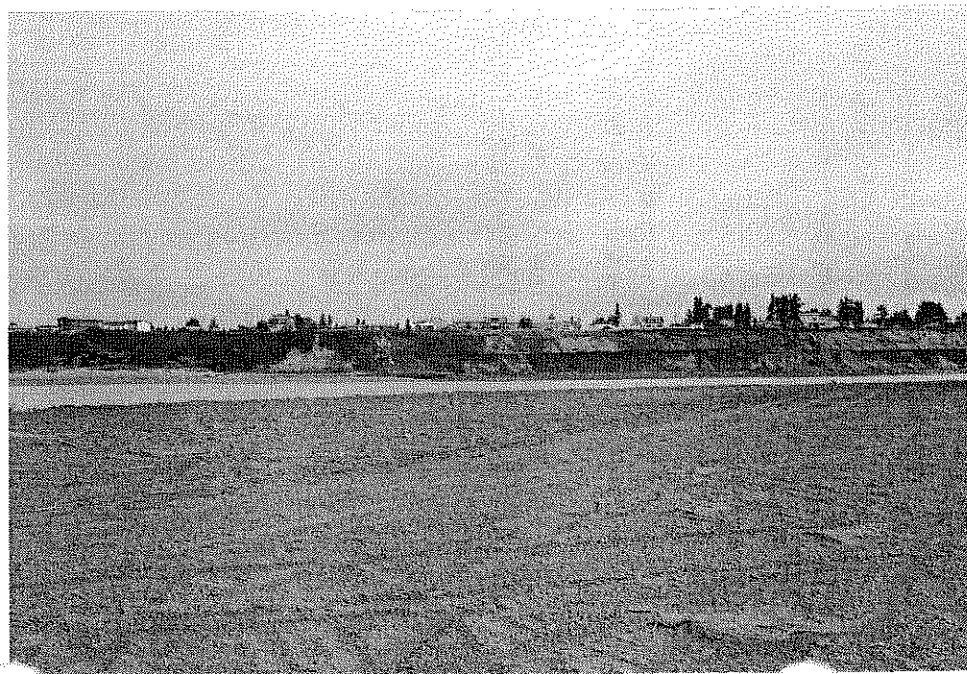
S. Beach 7-5-06



N. Beach 7-5-06



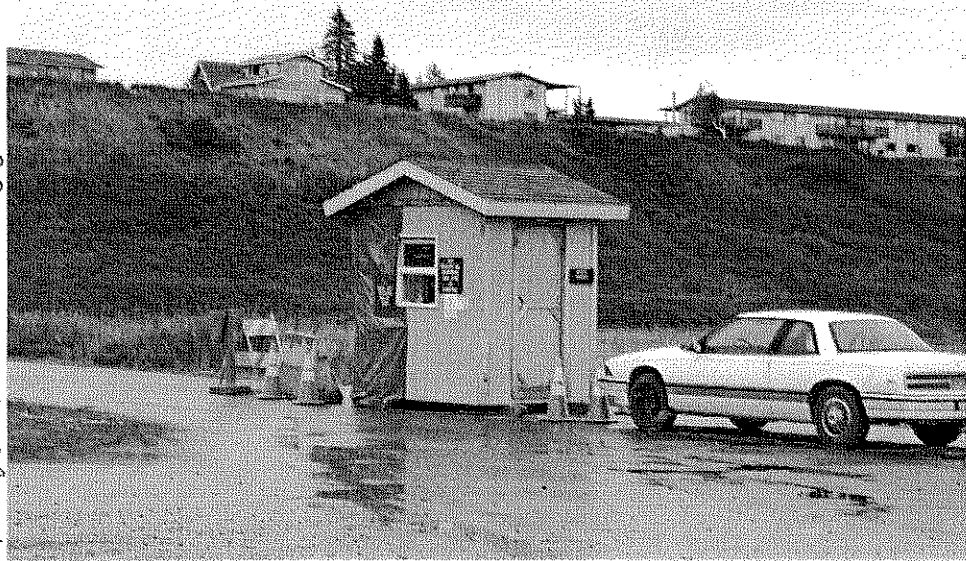
S. Beach 7-1-06



S. Beach 7/1/06



# North Beach Dipnet Pictures



N - BEACH 7-20-06



N-Beach 7-15-06



N- BEACH 7-20-06



N-Beach 7-21-06

# South Beach Dipnet Pictures



S-Beach 1-21-06



S-Beach 7-22-06



S-Beach 1-20-06



S-Beach 7-19-06



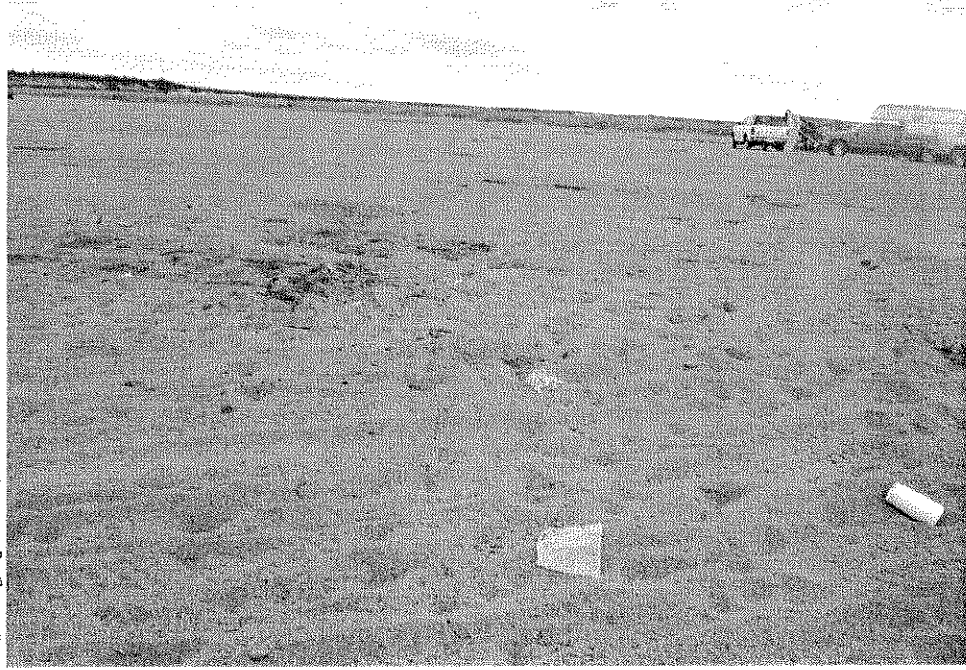
# Post Diphet Pictures



S. Beach 7-25-06



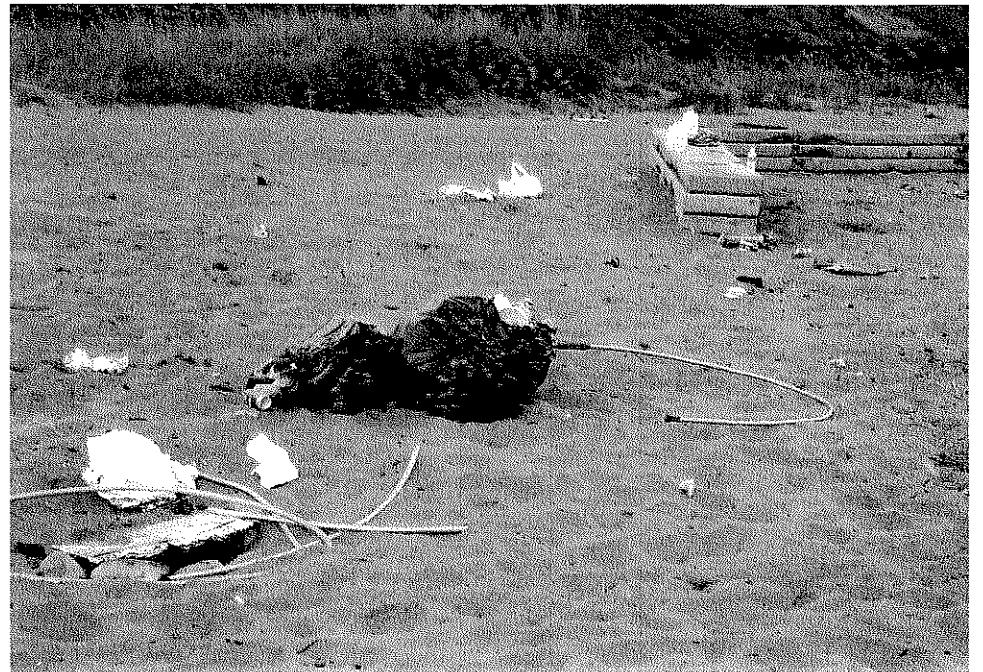
N. Beach 7-25-06



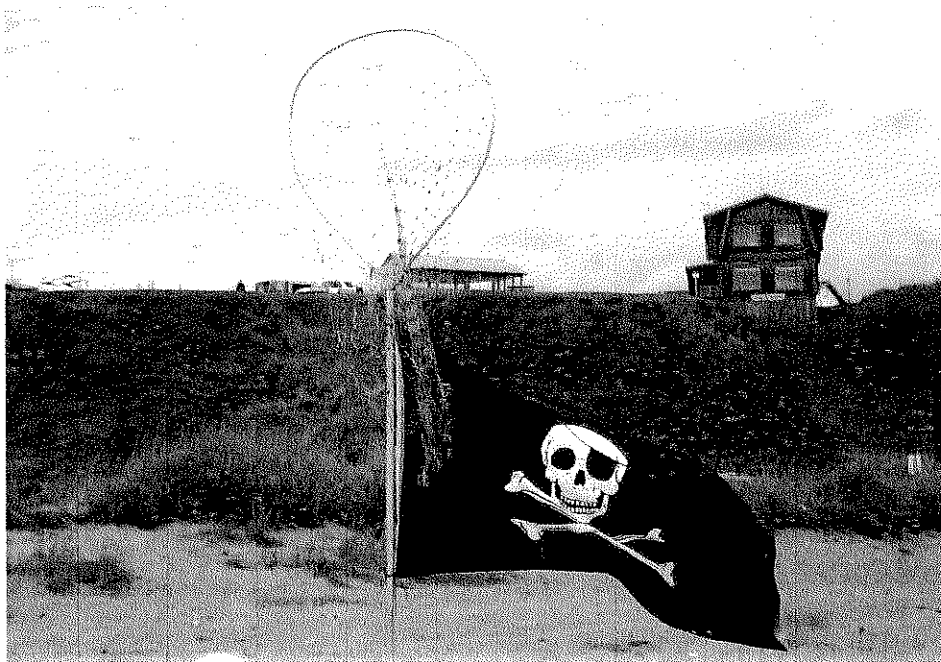
S. Beach 7-25-06



N. Beach 7-25-06

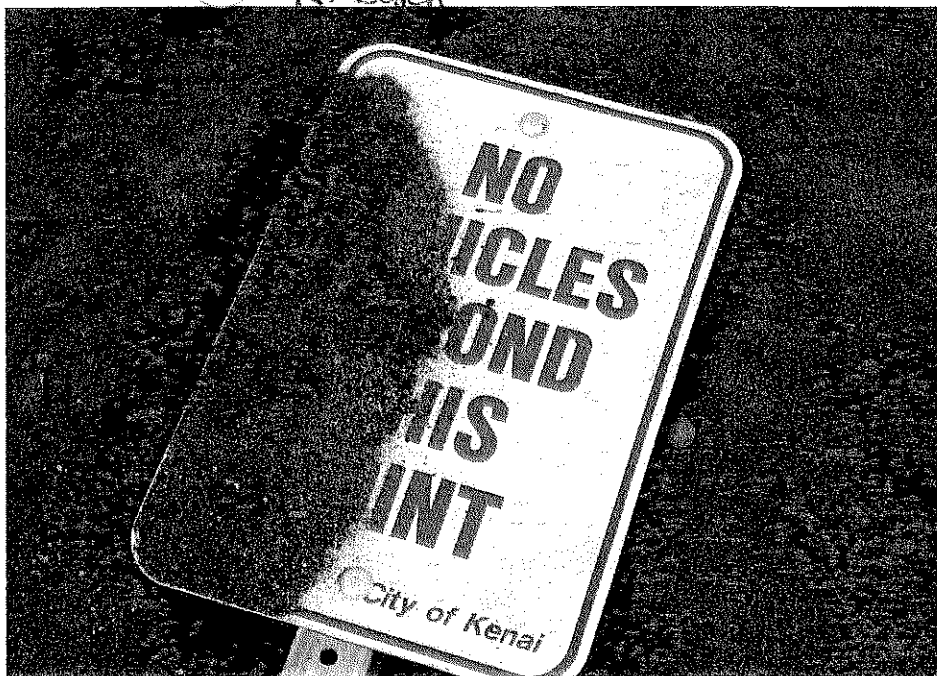


NORTH BEACH

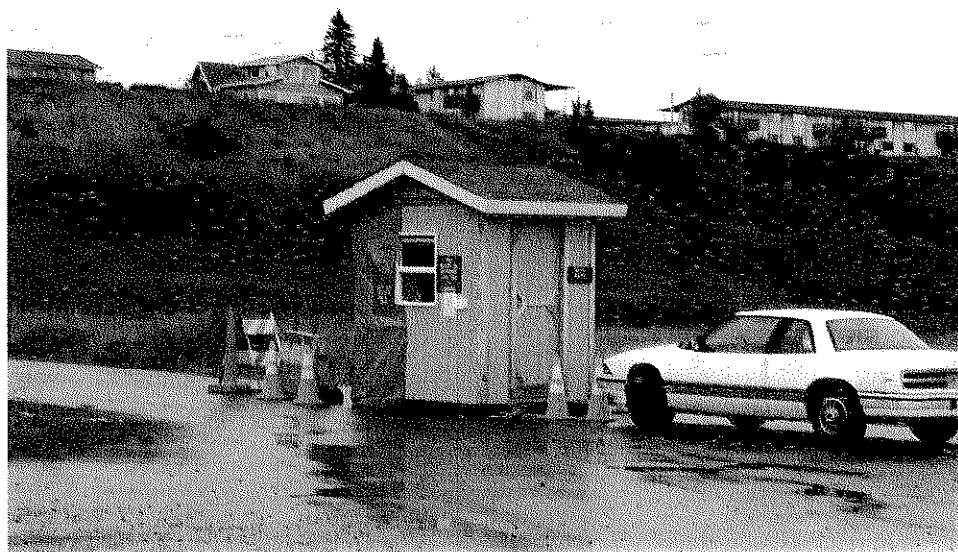




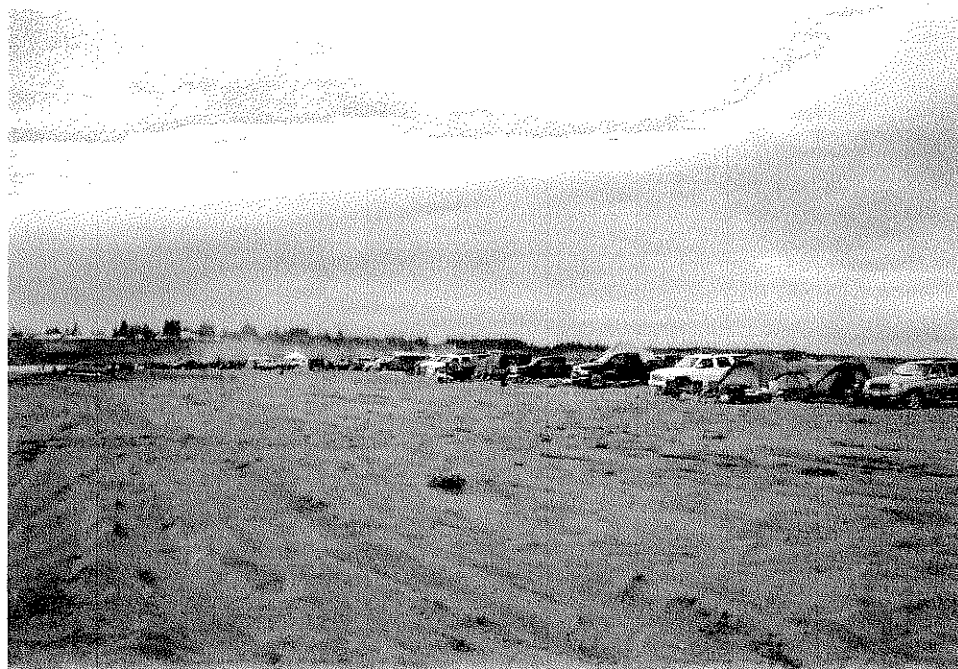
N. Beach



S. Spruce / N. Beach

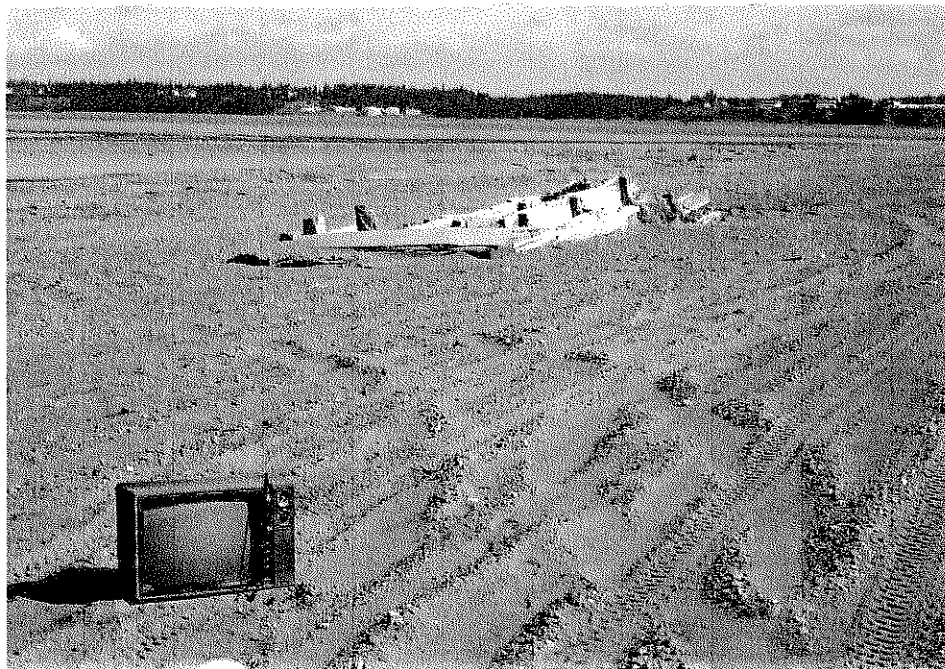


Dunes Rd



S. Beach

N. Beach

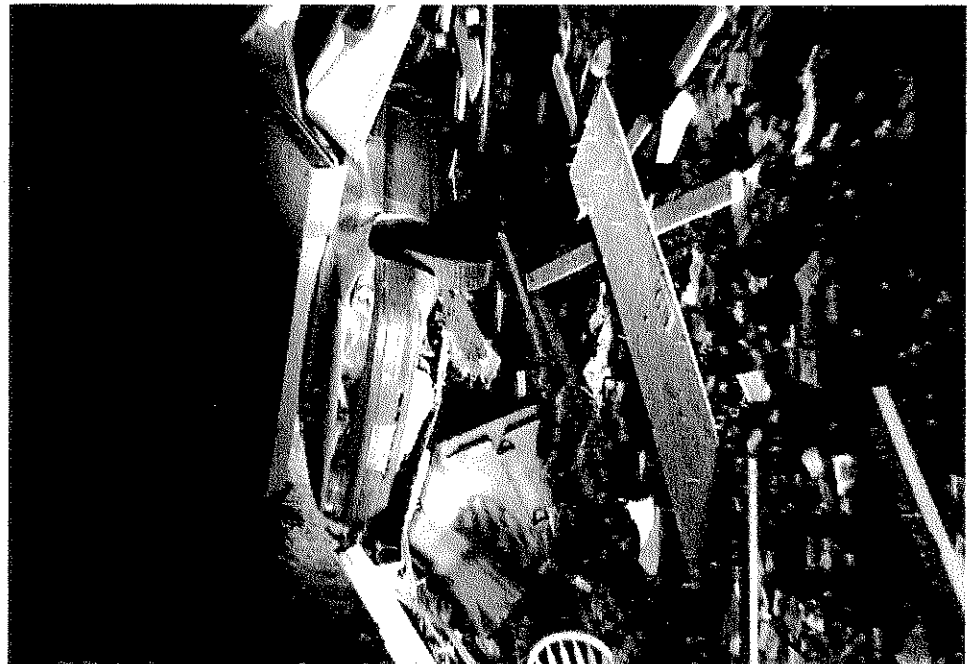
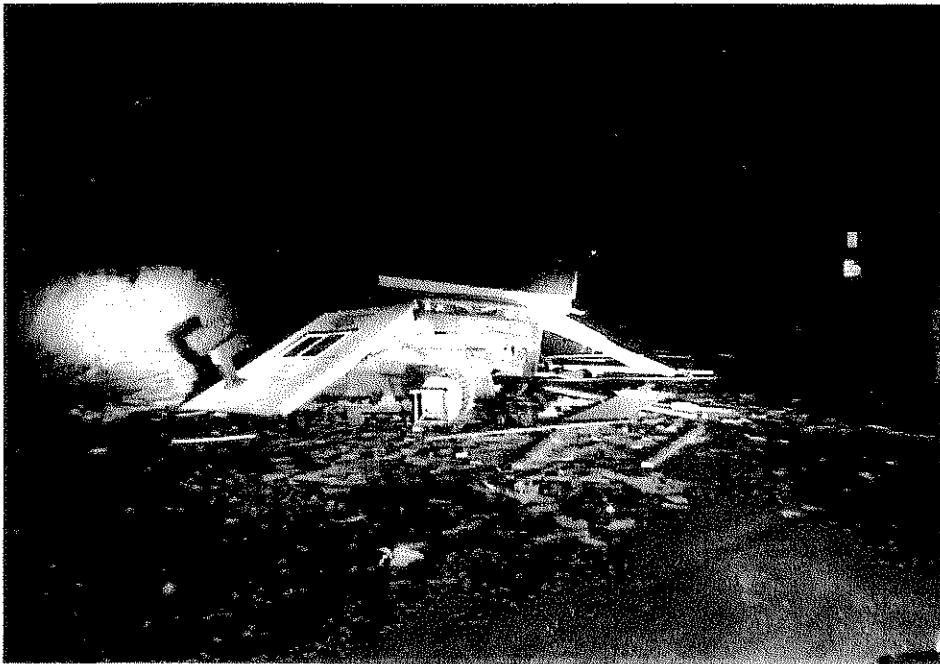
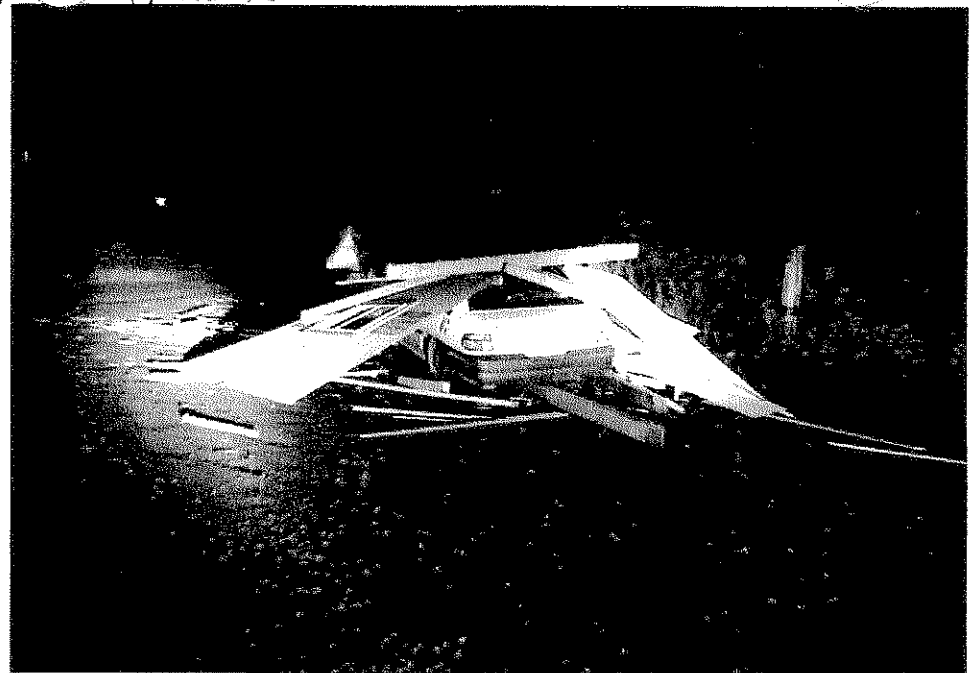


S. Beach



N. Beach "Waiting for the Fish"

Old Cannery Payshack



**PARKS & RECREATION DEPT.**  
**PERSONAL USE FISHERY**  
2006 Expenses

**Material / Supplies**

Restrooms	\$17,500
Dumpsters	11,185
Preparations	210
Dip Net Brochures	300
Receipt Books	780
Fee Envelopes	1,759
Phones / Minutes	390

<b>Total</b>	<b>\$32,124</b>
--------------	-----------------

**Labor**

Wages (Fee Station Attendants)	\$11,000
Wages (Public Works – Dock)	1,188
Wages (Clean-up, set-up, etc.)	1,500

<b>Total</b>	<b>\$13,688</b>
--------------	-----------------

**Grand Total: \$45,812**



*"Village with a Past, City with a Future"*

210 Fidalgo Avenue, Kenai, Alaska 99611-7794  
Telephone: (907) 283-7535, Ext. 236 / FAX: (907) 283-3014



## MEMORANDUM

**TO:** Rick Koch, City Manager

**Cc:** Lt. Kim Wannamaker, Bob Frates

**FROM:** Keith Kornelis, Public Works Manager *(KK)*

**DATE:** October 12, 2006

**SUBJECT:** Dip Net Fishery 2006

---

The Public Works Department did the following:

- Opened Old Cannery Road extension and placed a pay station with concrete barriers and barricades. DNR still would not give the city a temporary closure of the section line easement.
- Moved all three pay stations in place (1-S. Spruce, 2-South Beach) and set up concrete barriers for protection. We obtained a Right-Of-Way Construction Permit from the Kenai Peninsula Borough to allow the city to place the pay station in the Dunes Road right of way to collect the beach parking fee.
- Hauled gravel and graded the north and south side parking lots and beach entrances.
- Built a new overflow parking area and mud storage area and a new exit road to Bridge Access Road for the Boating Facility. We marked the parking spaces in the dock parking lots and made and installed many new signs in each location.
- Worked with Police, Finance, and Parks to develop regulations, policies, and operational procedures for the dip net operations.
- Scheduled the city employees for the dock boat launch and parking dip net operations.
- Placed ads in newspaper and radio about the dip net fishery. Helped develop and print an informational brochure to answer questions asked about the fishery.



### NORTH SIDE

- The City completed the replacement of the existing old outhouse at the end of S. Spruce with a concrete block outhouse. We continued to use port-a-potties at the turn-a-round on Alaska Ave. during the dip net season.
- We did not receive any bids on a new food concession area near the beach and S. Spruce Street.
- Not allowing fires or camping north toward Nikiski from the S. Spruce Beach entrance was a great improvement to the City's operation. There were fewer fires and less sanitation problems because of this rule.
- The two-hour parking limit in the parking lot at the end of S. Forest Drive helped prevent vehicle problems there.

### SOUTH SIDE

- The City should continue to pursue having the Old Cannery Road, which is a section line, vacated and block this entrance to the beach.
- Furnishing dumpsters and port-a-potties at the pay stations and on the beach is a service the city should continue.

### DOCK

- The City street crew constructed a new exit road and over flow parking and mud storage area. This was a tremendous improvement to the boating facility's overall operation.
- The culvert under Boat Launch Road should be watched very closely. US FWS would like a larger culvert but is not willing to pay for it.
- New directional signs were installed which resulted in a much improved traffic pattern. The city should consider building a right turn lane on Bridge Access Road from the new Dock Exit Road going south into Boat Launch Road. The city would need DOT approval. I think we could use Municipal Matching Grant funds.
- The City should consider paving the staging area in front of the restrooms and launch area and improve area lighting.
- The two additional boat launch ramps with floats were completed. Another great improvement to our boating facility.



**DIP NET EXPENSES 2006  
MATERIALS AND CONTRACT SERVICES**

Restroom supplies, pumping, misc.	646.00
Portable toilets (additional)	1,440.00
Dumpster (additional)	495.00
Newspaper ads	756.00
Parking lot - signs, delineators	5,267.00
Printing brochure	1,074.00
Excavate mud	1,100.00
Miscellaneous items	1,538.00
<b>Total</b>	<b>\$12,316.00</b>

**LABOR EXPENSES**

Dock Manager & Worker	10,560.00
Pay Station Worker	3,928.00
Streets – Pay stations, concrete barriers, signs	2,610.00
Streets – Parking lots and exit road – grading only	100.00
<b>Total</b>	<b>\$17,198.00</b>

**EQUIPMENT EXPENSES**

Streets – Pay stations, concrete barriers, signs	2,500.00
Streets – Parking lots – grading only	200.00
<b>Total</b>	<b>\$2,700.00</b>

<b>TOTAL ALL EXPENSES FOR PUBLIC WORKS DEPT.</b>	<b>\$32,214.00</b>
--	--------------------

**CAPITAL COST – NEW PARKING LOT AND EXIT ROAD**

Materials – gravel	2,250.00
Labor	9,000.00
Equipment	13,700.00
<b>Total</b>	<b>\$24,950.00</b>

# DIP NET PARKING AND L-RAMP REVENUE 2006

COLLECTION DATE	NORTHSIDE PARKING	SOUTHSIDE PARKING	DOCK	2006 DAY TOTALS	2006 CUMULATIVE	2005 DAY TOTALS	2005 CUMULATIVE
07/09/06				0.00	0.00	2,092.50	2,092.50
07/10/06	980.00	590.00	680.00	2,250.00	2,250.00	4,066.00	6,158.50
07/11/06	1,099.00	610.00	800.00	2,509.00	4,759.00	2,845.00	9,003.50
07/12/06	1,451.00	770.00	1,055.00	3,276.00	8,035.00	4,341.00	13,344.50
07/13/06	2,710.00	710.00	1,110.00	4,530.00	12,565.00	7,588.00	20,932.50
07/14/06	2,160.00	1,250.00	1,778.00	5,188.00	17,753.00	7,689.00	28,621.50
07/15/06	2,640.00	2,110.00	2,525.00	7,275.00	25,028.00	10,737.75	39,359.25
07/16/06	3,050.00	1,551.00	2,830.00	7,431.00	32,459.00	9,536.00	48,895.25
07/17/06	2,539.00	1,409.00	2,395.00	6,343.00	38,802.00	17,697.00	66,592.25
07/18/06	3,164.00	1,770.00	3,511.60	8,445.60	47,247.60	7,358.00	73,950.25
07/19/06	2,911.00	1,993.00	3,870.00	8,774.00	56,021.60	8,411.00	82,361.25
07/20/06	4,230.00	1,730.00	4,180.00	10,140.00	66,161.60	7,985.00	90,346.25
07/21/06	6,888.65	3,185.00	6,048.35	16,122.00	82,283.60	12,687.00	103,033.25
07/22/06		CLOSED		0.00	82,283.60	11,330.00	114,363.25
07/23/06		CLOSED		0.00	82,283.60	12,246.00	126,609.25
07/24/06		CLOSED		0.00	82,283.60	9,581.29	136,190.54
07/25/06		CLOSED		0.00	82,283.60	4,882.00	141,072.54
07/26/06		CLOSED		0.00	82,283.60	4,415.00	145,487.54
07/27/06		CLOSED		0.00	82,283.60	3,404.00	148,891.54
07/28/06		CLOSED		0.00	82,283.60	2,921.00	151,812.54
07/29/06		CLOSED		0.00	82,283.60	5,751.00	157,563.54
07/30/06		CLOSED		0.00	82,283.60	5,765.00	163,328.54
07/31/06	1,469.50	850.00	2,361.00	4,680.50	86,964.10	10,136.31	173,464.85
08/01/06		CLOSED		0.00	86,964.10		
08/02/06		CLOSED		0.00	86,964.10		
08/03/06		CLOSED		0.00	86,964.10		
08/04/06	1,110.00	410.00	645.00	2,165.00	89,129.10		
08/05/06	2,730.00	1,589.95	2,000.00	6,319.95	95,449.05		
08/06/06	2,030.00	765.00	2,075.00	4,870.00	100,319.05		
08/07/06	1,360.00	870.00	980.00	3,210.00	103,529.05		
08/08/06	770.00	1,400.40	945.00	3,115.40	106,644.45		
08/09/06	350.00	430.00	705.00	1,485.00	108,129.45		
08/10/06	1,580.00	160.00	620.00	2,360.00	110,489.45		
<b>TOTALS</b>	<b>\$45,222.15</b>	<b>\$24,153.35</b>	<b>\$41,113.95</b>	<b>\$110,489.45</b>		<b>\$173,464.85</b>	

NORTH/SOUTH SIDE PARKING -----  
DOCK LAUNCH/PARKING -----  
TOTAL -----

\$69,375.50
\$41,113.95
<b>\$110,489.45</b>



**2006 DIP NET  
REVENUE/EXPENSES**

**REVENUE**

<b>Total Revenue</b>	<b>\$ 110,489.00</b>
----------------------	----------------------

**OPERATIONAL EXPENSES**

Kenai Police Department	4,334.00	
Parks and Recreation Department	45,812.00	
Public Works Department	32,214.00	
		<u>82,360.00</u>
<b>Revenue minus Operational Expenses</b>		<b>\$ 28,129.00</b>
<b>City Street Department Capital Costs</b>		<b>\$ 24,950.00</b>