

# Itemba



*"Village with a Past, City with a Future"*

210 Fidalgo Avenue, Kenai, Alaska 99611-7794

Telephone: 907-283-3692 / FAX: 907-283-3693

## MEMORANDUM

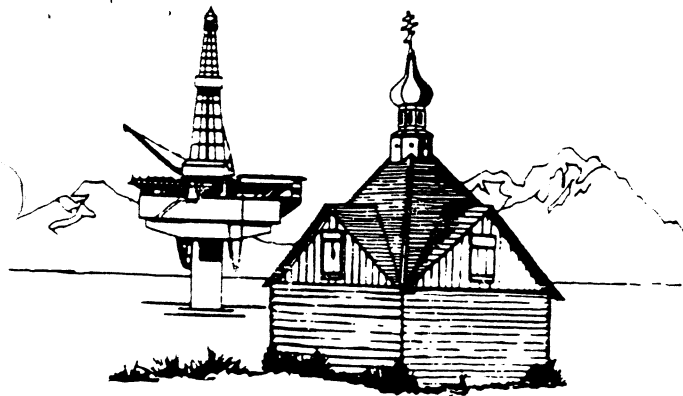
To: Kenai Parks & Recreation Commission  
From: Robert J. Frates, Parks & Recreation Director  
Date: October 26, 2005  
RE: **2005 Kenai River Personal Use Dipnet Fishery Report**

---

Attached is our Personal Use Dipnet Fishery Report along with some statistical data and recommendations for next season. One matter of great importance is the location of the proposed restroom facility on the north beach.

I would like to suggest that we meet at the end of Spruce Street after our meeting to further discuss possible locations.

Attachments



# KENAI POLICE DEPT.

107 SOUTH WILLOW ST., KENAI, ALASKA 99611  
TELEPHONE: (907) 283-7879 • FAX (907) 283-2267

September 22, 2005

TO: Chuck Kopp, Acting City Manager

FM: Kim Wannamaker, Lieutenant *vs*  
Bob Frates, Parks & Recreation Director  
Keith Kornelis, Public Works Manager

**RE: 2005 Kenai River Personal Use Dipnet Fishery**

The 2005 Dipnet Report includes this summary memo highlighting significant fishery observations, statistics, expenses and recommendations for the 2006 dipnet fishery; activity reports of Police, Parks and Recreation, and Public Works; and the Seasonal Enforcement Officer report detailing fishery observations, photos and recommendations for enhancing the North and South beach dipnet fishery.

---

The dipnet fishery opened at 6am on Sunday, 7-10-05 and closed at midnight, Sunday, 7-31-05. Most challenges associated with the fishery were anticipated and addressed by the City of Kenai during the course of the fishery.

The Police Department hired two non-sworn, unarmed Seasonal Enforcement Officers (SEOs) whose scheduled shifts provided coverage 7 days a week during the fishery. The SEOs overlapped during the week and worked cooperatively with Parks & Rec, City Dock personnel, and were assisted as needed by Patrol Officers. The SEOs were responsible for City Code enforcement (camping, parking, off-road vehicle operations, ATV use).

The Department handled 234 dipnet-related calls for service, compared to 203 in 2004, 49 in 2003, 49 in 2002, and 38 in 2001. The calls for service prior to 2004 were actually more, but the daily iron ranger change-outs (Officers assisting Parks & Rec employees) were all logged under a single daily service call rather than individually numbered. The 2005 calls for service included cash pick-ups multiple times daily from four pay shacks, plus iron ranger cash retrievals; Hit & Run complaints, illegal parking, complaints associated with campfires and littering, ATV & off-road vehicle operations, thievery, altercations & disorderly conduct, traffic control, lockouts, and welfare checks. The Department also assisted in rescuing 3 float-dipnetters ("Bobbers") in the mouth of the river who were caught in the outgoing current, impounded 4 vehicles, issued hundreds of warnings, and arrested one person for domestic violence. A wrecker was called to the North Beach/Kenai Avenue area at least 12 times, however, only 4 vehicles were impounded because owners would often appear to move their illegally parked vehicles upon seeing police and a tow truck.

Sworn Officers spent 68 hrs and SEOs spent 212 hours on dipnet-related activity. A Honda 4-wheeler was loaned by the A.B.W.E. Soldotna Post and used extensively by the SEOs for patrolling the South Beach, Kenai Avenue, and the area north of S. Spruce extended on the North Beach.

A.B.W.E. Troopers worked the N. Beach off/on during the fishery and charged about 2 dozen people with various fishing-related offenses, including: failure to clip tails, failure to log fish on permits, overlimit, and false info on permits/licenses. The Troopers worked plainclothes and kept their presence pretty low key.

Manned pay shacks were placed on S. Spruce, Dunes Rd, at the City Dock, and a new one was placed on Old Cannery Rd; parking/camping fees were immediately collected from fishery participants, cutting down significantly on unpaid parking issues experienced in previous years.

### **2005 Dipnet Fishery expense summaries are noted below:**

#### **Police Department Expenses (Labor)**

Police Officers	(68hrs)	\$2,040
Seasonal Enforcement Officer <sup>1</sup>	(212hrs)	2,820
Pre and post-season meetings & planning (25 hrs: Chief, Lt.,SEO)		850
Equipment & Fuel costs <sup>2</sup>		<u>1,000</u>
<b>Total</b>		<b>\$ 6,710</b>

#### **Parks and Recreation Expense Estimate**

Materials & Supplies	26,035
Labor	<u>21,300</u>
<b>Total</b>	<b>\$47,335</b>

#### **Public Works Expense Estimate for Kenai Boating Facility**

Materials and Contract Services	8,881
Labor	13,970
Equipment	<u>2,470</u>
<b>Total</b>	<b>\$25,321</b>

<b>Grand Total Expenses</b>	<b>\$79,366</b>
-----------------------------	-----------------

<b>Launch Ramp and Dipnet Parking/Camping Revenue</b>	<b>\$169,953</b>
---	------------------

173,464

---

<sup>1</sup> Labor costs are for both SEO's

<sup>2</sup> Patrol cars, the Dept. pickup, and two 4-wheelers were the equipment expenditures for the fishery. The costs incurred in this category would reflect fuel consumption by the vehicles; driving to/from pay shacks, City Hall, police station, Kenai Avenue, and up & down the beaches on the ATV, and possibly idling time at any of the mentioned locations. With this in mind, an estimate of use would range from as little as 30 gallons to upwards of 100 gallons of gasoline.

## 2005 Concerns and Considerations for 2006

### Signage

A "Master Sign" was created and erected at the N. Beach, near the pay shack; it displayed a great deal of useful information and was strategically placed so as to be easily read by arriving motorists, and by pedestrians walking close to the pay shack.. New brochures were created and contained extra information not previously provided. Information on these brochures was the same info as on the Master Sign, and with shack attendants giving verbal information too, citizens were well-informed. This practice was beneficial to all involved with the fishery and should be utilized next year.

### Paid Parking

The presence of manned pay shacks helped with compliance this year as it did with the installation of them last year; it made it very convenient for motorists to pay as they arrived and receive up-to-the-minute parking conditions, fish reports, and other information. On the North beach (S. Spruce), particularly on weekends, the parking lot filled quickly and those arriving later tended to either park at the little league fields, or along the curb near the Catholic church/Anchor Trailer Court/Little League park. Some drove on the beach N of the access point (S. Spruce extended) if they had 4WD, and shack attendants reported some motorists simply left because there was no room. Similar to last year, Police and SEO contacted several motorists in the S. Spruce parking area because they parked their primary vehicle in one spot, and their trailer and/or other equipment in the next spot (but only paid for one spot); all of those contacted either paid for the 2<sup>nd</sup> spot or moved stuff to make it available.

When shacks were unattended, compliance in paying (honor system with the iron rangers) was low. Motorists contacted by SEO who were not displaying a receipt often denied knowing where to pay, seeing signs, or said they planned to pay when a worker was at the shack. On the South beach, some attempts to avoid paying included, "We're just going to drive down where everyone's parking to see what's going on" (with their vehicles packed with dipnets & gear), and various other creative reasons. One vehicle was found to be displaying a 2004 parking receipt.

Traffic & parking congestion at the end of S. Forest Drive increased noticeably during the fishery. Dipnetters were parking at the end of S. Forest and walking down the stairs to the beach to dipnet. They would either haul their fish/gear back up the stairs to their vehicles, or drive down S. Spruce, park in the free spot, and load & leave from there. This congestion was a contributing factor to one H&R complaint. This cul-de-sac issue needs to be discussed during the 2006 planning stage(s); a thought might be to limit large RV and vehicles pulling trailers in this area.

A suggestion was made to color-code parking areas on S. Spruce, with corresponding receipts; green for RV's, blue for general vehicles, yellow for 1-hr free parking, etc. Since the parking area is gravel, the color coding could be a green/blue/yellow 6" round metal plate atop a sign post for easy identification.

### Restrooms

There were minimal complaints regarding full, overflowing, or inadequate number of port-a-potties. An outhouse was placed near the South Beach pay shack for employees' use. The existing permanent restroom at the junction of S. Spruce/Kenai Ave. could be replaced by a fire & vandal-resistant concrete toilet for about \$26,000. The removed structure could be re-installed at another location (park, playground, camping area). The existing structure was not vandalized during the dipnet fishery, but has been at other times of the year; it was burned, wood cut/pulled off, and Plexiglas damaged. This was previously addressed, and should be re-visited for '06 consideration.

### Camping

Tents were allowed on both beaches this year with a camping permit (\$10/12hrs). This did not create significant police issues, save recurring trash problems and some difficulty with camping permits not secured to the tent(s) in a conspicuous place.

Recurring problems with camping are litter, fires, and habitat damage. Several campers on the North Beach set up between the Sewer Treatment plant and the high bluff below S. Forest/Toyon, and built fires ranging in size from small heating/cooking fires to raging bonfires, which had potential for spreading to the grass and other vegetation nearby. Continual police and SEO contact with these campers kept the fires controlled and, when requested, people generally did not mind moving their fires further away from the vegetation or making them smaller.

At the very beginning of the dipnet fishery there were problems with campers N of the Sewer Treatment Plant climbing the bluff and foraging in the vegetated areas for firewood. After several people were contacted, the woodcutting stopped.

If previous problematic issues could be minimized, the former campground on S. Forest Drive might be considered for being re-opened as a campground. It is a premier spot and would generate sufficient finances to cover maintenance, care & upkeep during the busy summer months. Police and/or SEO presence on a regular basis would keep problems to a minimum. A portion of this area was upgraded (graveled path w/rope fencing) last year with federal grant funds, providing an aesthetically pleasing access to the S. Spruce parking area.

### Off-Road Vehicles

ATV use seems to increase each year and this year was no exception. There were more ATV complaints this summer, primarily on the N. Beach, than previous years. Pay shack attendants were able to keep track of the violators and provide relevant information to responding police/SEO, and as ATV riders were contacted and a greater enforcement presence made, complaints declined.

### Dumpster Service

Dumpster service to the North Beach was a daily occurrence which minimized any trash overflow problem. A dumpster was put on the South Beach and there was a noticeable absence of trash piling problems that were present last year.

### Traffic Congestion on Kenai Ave

This was not a problem except during mid-fishery weekends, with a flood of dipnetters arriving and leaving within a small time frame. It was anticipated that a lot of vehicles would be on Kenai Ave to unload/load their gear from the beach, and SEOs and police officers spent a lot of time maintaining traffic control, impounding vehicles as applicable, to keep the process moving as smoothly as could be expected.

The load/unload turnaround area at the end of Kenai Avenue was enlarged, creating more room for vehicles to maneuver. Sometimes this added space only made people think more vehicles could be crammed in that area and created congestion problems, but mostly it provided much needed room for turning.

The biggest problem with Kenai Avenue is it is barely 2-lanes wide, with wetlands on one side and grassy dunes on the other. If one vehicle parks on the W side, against the concrete barriers, it bottlenecks traffic going both ways. Making pull-outs along Kenai Avenue would create designated load/unload areas without blocking the throughway. Many people do not load/unload at the turnaround because they dipnet up the beach (N) from the mouth of the river; it is more convenient

to carry their load straight to the dunes/Kenai Ave than to haul their stuff to the turnaround or the beach access extension of S. Spruce.

The only problems with traffic congestion seemed to occur in the absence of enforcement personnel; while most people exercised common courtesy and followed rules, many did what was most convenient just for them and this created problems for the others.

For a more in depth review of the 2005 dipnet fishery and photos, please review the departmental reports included with this summary memo.



*"Village with a Past, City with a Future"*

210 Fidalgo Avenue, Kenai, Alaska 99611-7794

Telephone: 907-283-3692 / FAX: 907-283-3693

## MEMORANDUM

To: Kim Wannamaker, Police Lt.  
From: Robert J. Frates, Parks & Recreation Director  
Date: September 8, 2005  
RE: **2005 Dip Net Fishery Information**

---

As in year's past, the City contracted dumpster and portable toilet services out. This season, however, dumpsters were serviced seven (7) days per week and were added to the south beach for the first time this season. The contractor failed to empty the north beach dumpsters one day during the first week, but otherwise, was able to keep up with the demand.

Portable restrooms were again provided on the north and south beach and were serviced daily. With the exception of a few isolated comments, the portable units appeared to withstand the demand placed on them.

Project Protect (KBGC) participants and ALPAR assisted with litter patrol and protection of the dunes. Although Project Protect participants were not as readily available as last season, their occasional presence did make a difference. They were, however, very instrumental in lending assistance prior to the season and during the post-season clean-up effort.

New brochures pertaining to the dip net fishery were developed and distributed prior to the season and throughout the fishery. The brochures were a much-improved version of prior handouts and included maps and additional information previously not covered. A new "master sign" that included important notices was also added to the north beach, in addition to, one new Project Protect sign. A new Project Protect sign was also added to the south beach.

A third fee station was added to the south beach (Old Cannery Rd.). This access route was not heavily used and led us to occasionally reassign the day shift worker to other duties.

Parking at the north beach parking lot was a challenge during weekends and required constant monitoring and enforcement. This is one area that perhaps a dedicated lot attendant would prove beneficial during peak times or perhaps color-coding the barricades would help. The Kenai Little League parking lot was used and did assist with over-flow parking although it was also

filled to capacity during the second and third weekends. Additionally, the tent campground was heavily used throughout the entire fishery and required daily monitoring.

### **Parks & Recreation Expense Estimates**

#### **MATERIAL & SUPPLIES**

Portable Toilets	\$14,130
Dumpsters	9,240
Master Sign	770
Preparations	700
Dip Net Handouts	600
Receipt Books	500
Advertising	95
<b>Total</b>	<b>\$26,035</b>

#### **LABOR**

Wages (fee station attendants)	\$15,000
Wages (dock work)	3,800
Wages (miscellaneous)	2,500
<b>Total</b>	<b>\$21,300</b>





## **CITY OF KENAI**

*"Oil Capital of Alaska"*

210 FIDALGO AVE., SUITE 200 KENAI, ALASKA 99611-7794

TELEPHONE: 907-283-7535

FAX: 907-283-3014

# **MEMO**

To: Charles M. Kopp, Acting Kenai City Manager  
CC: Lt. Kim Wannamaker, Robert J Frates  
From: Keith Kornelis, Kenai Public Works Manager  
Subject: Dip Net Fishery 2005  
Date: September 21, 2005

Public Works Department made some improvements to the city's overall operation.

- We opened Old Cannery Road extension and placed a pay station with concrete barriers and barricades. This year DNR would not give the city a temporary closure of the section line easement.
- We moved all four pay stations in place (1-S. Spruce, 2-south beach, 1-dock) and set up concrete barriers for protection. The street crew built a new pay station. We obtained a Right-Of-Way Construction Permit from the Kenai Peninsula Borough to allow the city to place the pay station in the Dunes Road right of way to collect the beach-parking fee.
- We hauled gravel and graded the north and south side parking lots and beach entrances.
- We built a new overflow parking area at Port of Kenai near our dock and created an exit road through Port of Kenai. We marked the parking spaces in the dock parking lots and made and installed many signs in each location.
- We worked with Police, Finance, and Parks to develop regulations, policies, and operational procedures for the dip net operations.
- We scheduled the city employees for the dock boat launch and parking dip net operations.
- We placed ads in newspaper and radio about the dip net fishery. We help to develop an informational brochure to help answer questions asked about the fishery. We printed the brochure.

### **NORTH SIDE SUGGESTIONS**

- Go forward with the city council approved replacement of the existing old outhouse at the end of S. Spruce with a precast concrete outhouse. (Continue to use port a potties at the turn-a-round on Alaska Ave. during the dip net season)
- Provide electrical power to the pay station and a new food concession area for lights & heat and area lighting. I think area lighting could be funded from the Municipal Grants Program fund.
- Not allow camping or fires on the beach from the Wastewater Treatment Plant (or S. Spruce) to ¼ mile past the high bluff area to the north.
- Do not allow RV's or vehicles with trailers to park in the parking lot at the end of S. Forest Dr.

### **SOUTH SIDE SUGGESTIONS**

- Have the Old Cannery Road, which is a section line, vacated and block this entrance to the beach.
- Continue to furnish a dumpster and a port-a-potty at the pay station and dumpsters on the beach.

### **DOCK SUGGESTIONS**

- Replace culvert under Boat Launch Road. This needs to be the top priority since we could lose the road anytime. I have obtained an USFWS grant to pay for some of this. I think we could use Municipal Matching Grant funds to complete this project.
- Build a Dock Exit Road and additional parking. The city has just made a land trade that allows us to build a parking lot and an exit road east of our Boating Facility to Bridge Access Road. I think we could use Municipal Matching Grant funds since it will be an improvement to a transportation route.
- Build a right turn lane on Bridge Access Road from a new Dock Exit Road going south into Boat Launch Road. The city would need DOT approval. I think we could use Municipal Matching Grant funds.
- Pave the staging area in front of the restrooms and launch area and improve area lighting.
- Add two additional launch ramps and floats (have \$350,000 grant). The design for this project is complete and we are waiting for the Corps permit.

### **Completed Dip Net Capital Improvement Projects**

- Alaska Ave. concrete piles and aluminum walkways and stairs (\$120,000)
- S. Spruce Beach Parking and signs (\$105,000)
- Wetlands Protection Project which includes a trail from Municipal Park to the beach parking lot, and Bluff Stairs Improvements. (\$24,000)
- Paving the area around the pay station and turn-a-round near the north beach and the parking lot at Municipal Park.

### **2005 Dip Net Expenses at the Dock** **Materials and Contract Services**

Restroom supplies, pumping, and misc.	\$ 397
Portable toilets (additional)	1,250
Dumpster (additional)	413
Newspaper ad and payment receipts	695
Parking lot- signs, delineators, paint, etc.	1,083
Printing brochures	400
Excavate mud off ramp	1,100
Other miscellaneous items	3,543
<b>Total</b>	<b>\$ 8,881</b>

### **Labor Expenses**

Dock Manager	\$ 4,456
Dock Worker	5,249
Pay Station Worker	2,765
Streets- Pay stations, concreted barriers, signs	500
Streets- Parking Lots	1,000
<b>Total</b>	<b>\$ 13,970</b>

### **Equipment Expenses**

Streets- Pay stations, concreted barriers, signs	1,470
Streets- Parking Lots (includes gravel cost)	1,000
<b>Total</b>	<b>\$ 2,470</b>

**2005 TOTAL MATERIALS, LABOR, & EQUIPMENT COSTS** **\$ 25,321**

# Memo

**To:** Lt. Wannamaker  
**From:** SEOs Shields & Espy  
**Date:** 8/17/2005  
**Re:** 2005 Kenai River Dip Net Fishery

---

The information included in this report is a summary of the Personal Use Dip Net Fishery that took place at the mouth of the Kenai River beginning on Sunday, July 10 and concluding on Sunday, July 31.

The fishery opened on Sunday, July 10 at 0600. To start, the fishery was only open between 0600-2300. This was the second year that the City of Kenai placed pay booths on both the North and South beaches. The pay booths opened on Saturday, July 09 and were fairly busy collecting from dip netters staying the night for the 0600 opener. The pay booths collected \$10 for 12 hours parking and \$10 for 12 hours camping.

While the pay booths alleviated the problem of people not paying, it still did not ensure that everyone paid. During the first weeks of dip netting, the pay booths were not open 24 hours a day and many people went through without paying. The Seasonal Enforcement Officers (SEOs) did not issue any citations for failing to pay during the 2005 dip net fishery but did issue written warnings to several people failing to pay and made sure they paid. The City opened beach access of the South Beach to Dunes Rd. and Cannery Rd.

The first week of the fishery was fairly busy. SEOs spent most of their time on the North beach controlling parking, controlling traffic on Kenai Avenue, and enforcing no camping on the dunes. The parking lot was full but didn't exceed its capacity.

SEOs spent time at the South beach checking pay receipts. The majority of dip netters didn't pay for parking the first week because no one was in the shack, however, the majority of people complied with the fees after they understood. Most people failed to understand the "iron ranger". Much time was spent explaining the self pay stations and issuing written warnings for violators.

On Saturday, July 16 there was a considerable increase of people and vehicles on both the North and South beaches. SEOs spent the majority of their shifts keeping traffic moving on Kenai Avenue. By early morning the north beach parking lot was full and vehicles went to the Kenai Little League Fields to park. People also began parking outside the concrete parking

medians blocking traffic in the parking lot. Pay booth attendants also helped keep this under control by informing people not to park outside the concrete blocks.

Considerable time was also spent keeping campers out of the dunes. Without proper signs and barriers, people had a hard time understanding where they could and couldn't camp. People were also parking in the prohibited area on the beach North from South Spruce to the sewer treatment plant. This caused vehicles that were trying to exit the beach to get stuck in the sand. The first week SEO's issued 111 warnings for parking offenses, 6 warnings for camping offenses, and called a tow truck 7 times to remove vehicles parked on Kenai Avenue. No citations were issued and no vehicles were towed, all the owners showed up and negotiated with tow trucks before their vehicles were towed. SEO's also responded to a report of juveniles launching rocks off the South Forest Park lookout with a sling shot, causing damage to a parked RV.

On Sunday, July 17 the number of vehicles stayed about the same for the majority of the day. SEOs dedicated the majority of their time to the North beach on the same problems. Some time was spent at the south beach; however, since there is more room for parking on the beach, enforcement remained limited. There was, however, a problem with parking and camping on Dunes Rd. Since the start of dip netting people began camping on Dunes Road, the Dunes Road parking space was not free of campers until the end of dip netting. During late evening the majority of dip netters left both the North and South beaches, this caused a lot of congestion on Kenai Avenue. The rest of this week through Friday, July 22 was fairly slow and for the most part was limited to local residents and required less attention from SEOs.

On Tuesday, July 19 there was an Alaska Department of Fish and Game emergency order, which opened the dip net fishery to 24-hour dip netting. This made it possible for SEOs to patrol the South beach later in the evening due to lack of problems at the previous 2300 closure.

Throughout the second week SEOs received multiple complaints of people parking on Kenai Ave., ATV's in prohibited area on North Beach, and campers camping on the dunes. Most of these complaints, when followed up, showed people were uninformed of the laws. SEO's issued 104 warnings for parking offenses, 2 written warnings for ATV's operating in prohibited areas, and 2 non-reportable MVA's.

On Saturday, July 23 there was again an increase in vehicles and people on both beaches that lasted through Sunday, July 24. The increase, however, was not as large as the previous weekend. People were more manageable but still required constant policing. SEOs continued to spend the majority of their time at the North beach but continued to maintain a strong presence at the South beach to ensure people were paying for parking.

The rest of the week through Sunday, July 31 remained busy and SEOs continued to deal with the same problems. SEO's issued 60 warnings for parking violations and 6 warnings for ATV's operating in prohibited areas.

There was a large problem at the City Dock with traffic backing up from the pay shack to the highway. During the first weekend of dip netting SEOs and Kenai Police Officers had to spend considerable time at the City Docks due to people trying to exit and make "U-turns" on Bridge Access Rd. The solution to this problem was to open the new exit through the Port of Kenai. This alleviated the problem of people getting stuck turning around in the highway.

SEOs spent a total of 212 hours on dip net related activities during the 2005 dip net fishery, 114 hours at the North beach and 98 hours at the South beach. SEOs also responded to or initiated 88 dip net related calls for service and issued one dip net related citation.

## **SPECIFIC OBSERVATIONS AND CONCERNS**

### **Overview**

The 2005 dipnetting season went well despite the growing number of dipnetters each year. The placement and operation of pay shacks for the second year helped alleviate many problems that may have arisen from the large number of people. The pay shacks helped not only in collecting money but also in informing people of the rules. The fact that more and more people are showing up each year may constitute a problem in the future, as there are many areas that may be unable to sustain a greater influx of people. Some of these areas will be camping and parking on the South beach, RV parking in the City of Kenai, and parking off of Cannery Rd.

Camping permits continued to be difficult to check. Most people that were camping were normally down dip netting and away from their campsites. This made it difficult to know whom to contact, as most the campsites were unattended. A possible solution would be to have more campsites within the city. The beach becomes crowded with campsites and increases the amount of traffic flow on Kenai Ave, as people are unpacking and packing their campsites. A solution for checking camping permits would be to stake out campsite areas that people could register for. This way if we know a Kelty tent is registered for a specific camping area, between a specific set time, then when we check the beach we will know who has paid and who hasn't. Homer does a good job on the "spit" in doing this. They have signs, for specific areas, that say: "F1, G1, H1, etc". Multiple campers can camp in a specific area but at least we will have a general idea of where they are camped and also be able to determine which tents have paid to be in that area.

Another issue is having signs warning the dipnetters of the dangers in "float dipnetting" or dipnetting when the current is strong. Three individuals had to be rescued after being swept into the inlet while float dipnetting this year.

### **North Shore**

The North shore continued to be the busiest this year. Since the South shore is limited to people with 4-wheel drive vehicles and unrestricted ATV access, the North shore received the largest majority of vehicles. Some problems were people parking too long on Kenai Avenue, traffic jams on Kenai Avenue, and the South Spruce paid parking area being constantly full.

The Kenai Little League Ball Fields provided overflow parking, however, the ball fields were not sufficient in providing all the parking space needed. During the second and third weekends of dipnetting, vehicles were also parked out onto South Spruce and a few even parked on North Spruce.

Traffic on Kenai Avenue also became a problem on these busy weekends. A few times traffic on Kenai Avenue was so heavy that vehicle's were jammed at the end of Kenai Avenue. At these times SEO's would have to begin backing vehicles out of Kenai Avenue and try to stop any more traffic from entering into Kenai Avenue, until the current jam of traffic was released.

Parking problems were not as frequent as they have been in past years. However, there still were a few problems that occurred. One problem was the large number of motorhomes that populated the parking area. During the second and third weekends, all the motorhome parking spaces were full and many motorhomes began parking in the car parking spots. The RV parks on top of the bluff were also full, leaving little parking options for motorhomes. SEO's received complaints of motorhomes parking at the end of South Forest, at the end of Spur View Rd., and in the Dustbowl parking area. For the parking area at the end of South Spruce, having more visible parking lines would help keep motorhomes from using more than their parking spot.

Camping was another major concern during the dipnetting season. Those who were camping in tents failed to understand that they weren't allowed to camp in the dunes. SEO's repeatedly had to make campers move their tents off the vegetation. A possible solution would be to have some sort of fence along the dunes where people are not allowed to cross. Another idea would be to have signs that told people not to camp on the vegetation.

Another problem was vehicles parking on the beach to the south of the Water and Sewer Treatment Plant, even when the pay booth attendants told people to park north of the Treatment Plant. Mostly this occurred from lack of understanding of where the Treatment Plant was. It is very confusing how the current system is set up. They can have fires on one side but can't have vehicles. On the other side they can't have fires and can only park after a specific point up the beach. It might be just as beneficial to have no parking anywhere down there or open up the entire beach north of the access road. Another suggestion is just placing more signs that help direct people to the right places to park on the beach.

Other ideas are to have signs for littering and a sign at the end of Kenai Avenue warning people that vehicles parked over 5 minutes will be towed. Many people thought that as long as they had someone attending their vehicle that they could take as long as they wanted packing up their stuff.

## **South Beach**

The South beach received more of SEO's attention this year than in past years. The main cause was the time spent in driving to the vehicles at the mouth of the river and the time it took to check the vehicles for parking permits. Many thought paid parking was only limited to parking on Dunes Rd or they did not pay because no one was at the pay shacks. This problem occurred most when dipnetting was only open between the hours of 600-2300. This meant the pay booth attendants were not yet at the booths 24 hours a day to regulate the dipnet traffic. Also once we told people about the "iron rangers" most people quickly went and paid for parking.

Many dipnetters did not see the "iron rangers", nor did they understand how they worked. On Dunes Rd. the "iron ranger" is not next to the pay shack but near the beach access. Since most people stop at the pay shack and read the signs, it might be more advantageous to keep the "iron ranger" near the pay shack to show people what and where the "iron ranger" is. A possible solution would be to place the pay shack nearer to the beach access. This way people are not confused in thinking they are paying to park on Dunes Rd. This would also eliminate traffic congestion at the pay shack. The parking/camping at Dunes Rd. becomes so heavily congested that at some times it's difficult to navigate around the pay shack. Placing cones also might help in keeping people from parking in the thruway. The beach "iron ranger" is in a good spot and not much can be done except making a bigger sign. Even then most people will not notice it and SEO's letting people know about the "iron ranger" seemed to work it getting a positive response.

Only a small amount of time was spent enforcing camping and ATV operation on the South beach. This wasn't as big an issue as the North beach, as most people camped out on the beach away from the vegetation and there were less areas prohibiting ATV operation.

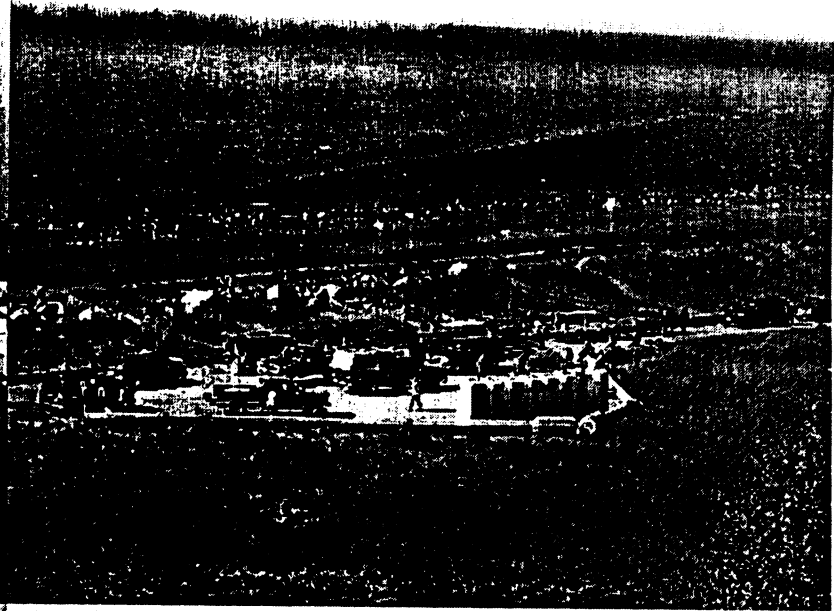


# North Beach Dipnet Pictures

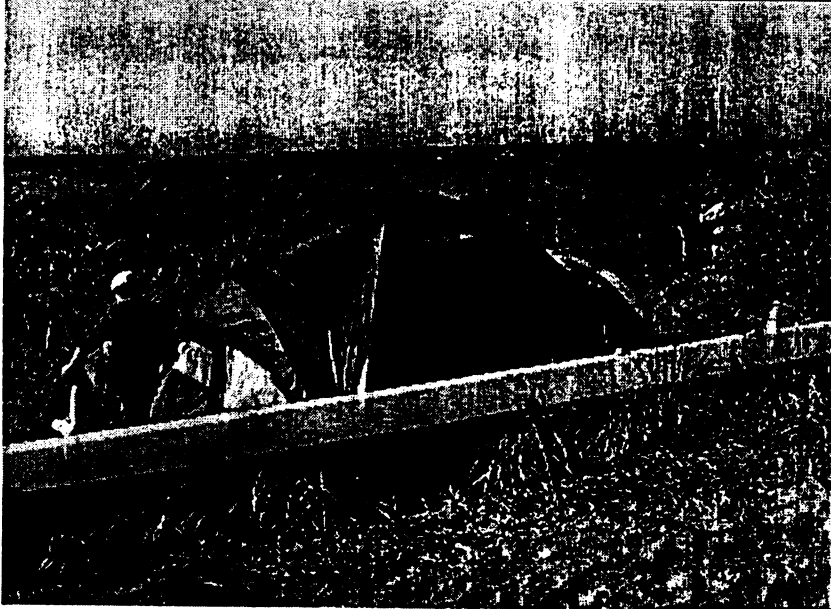
7-16-05 N. Beach



7-23-05 N. Beach



7-11-05 N. Beach



7-16-05 N. Beach

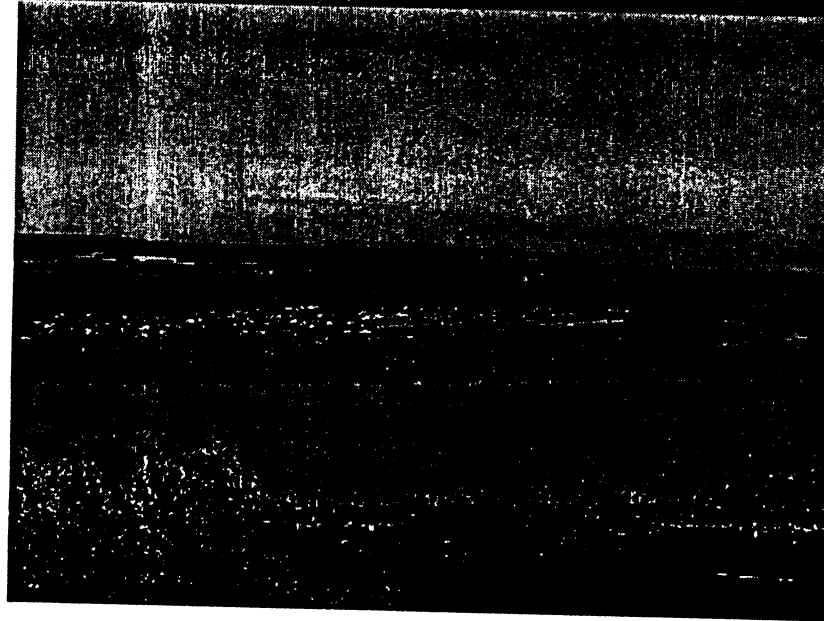


# South Beach Dipnet Pictures

7-24-05 S. Beach



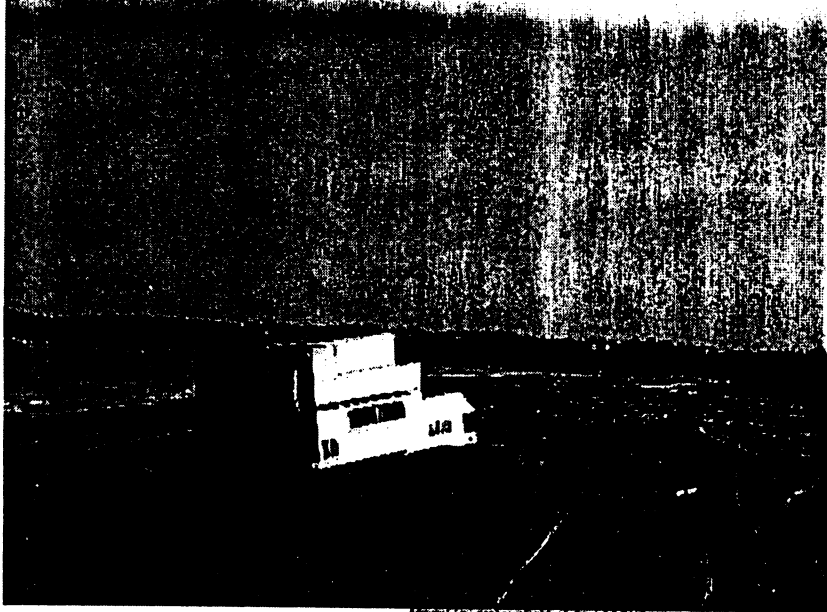
--19-05  
Dunes Rd.



7-23-05 N. Beach

# Dipnet Pictures

7-23-05 S. Beach



Post dipnet 8-02-05 S. Beach

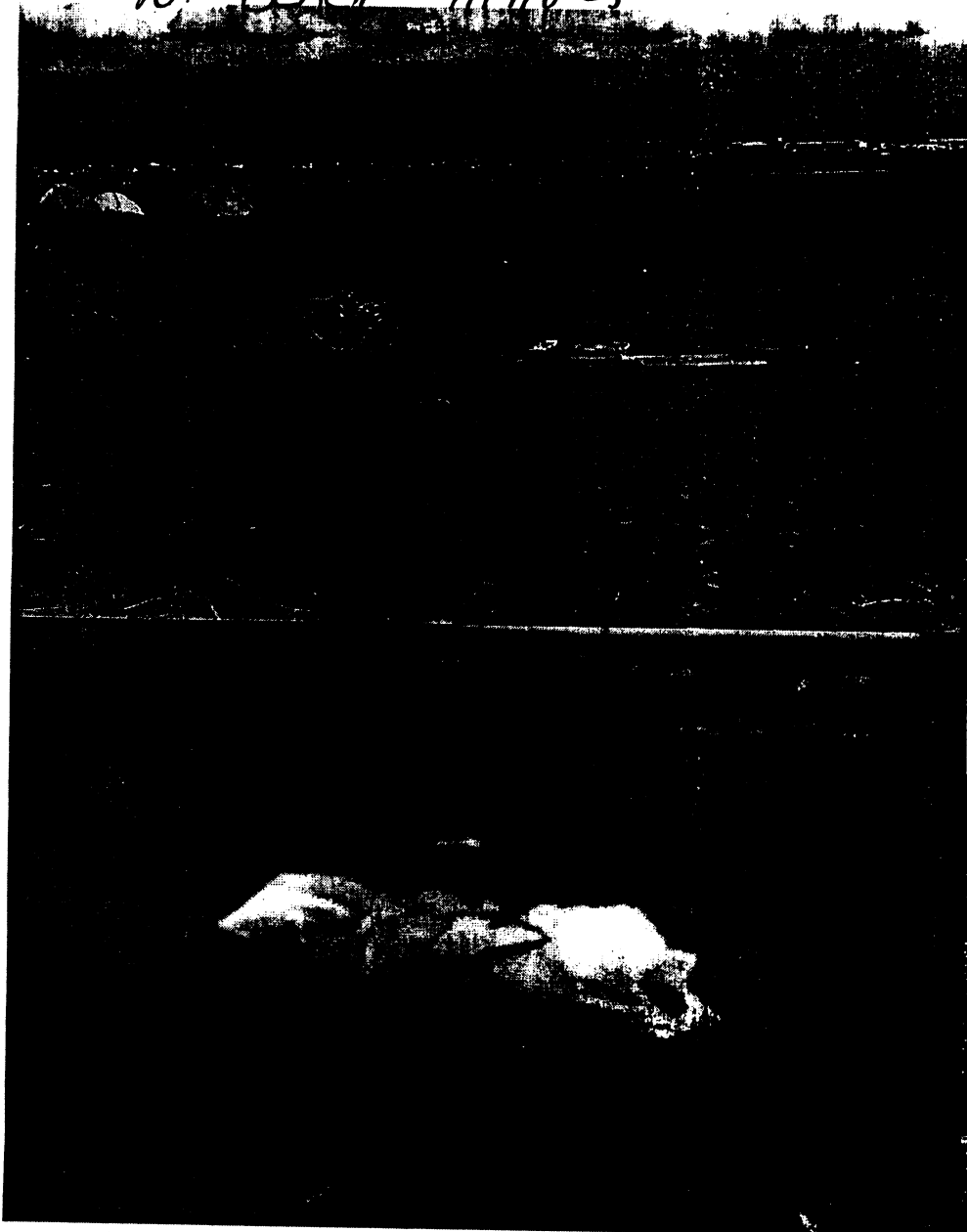


7-26-05  
Dipnet results

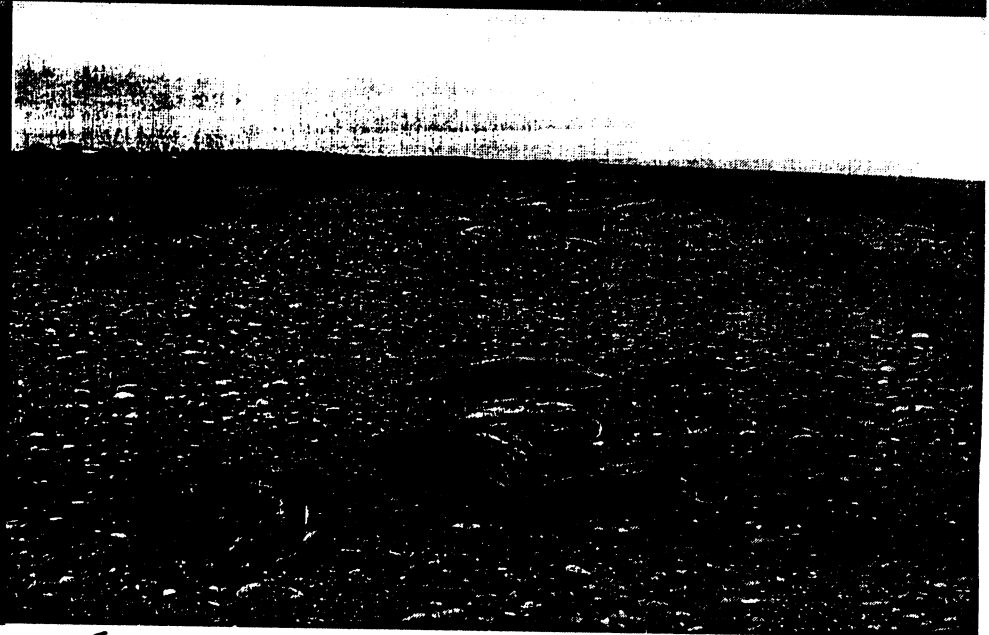
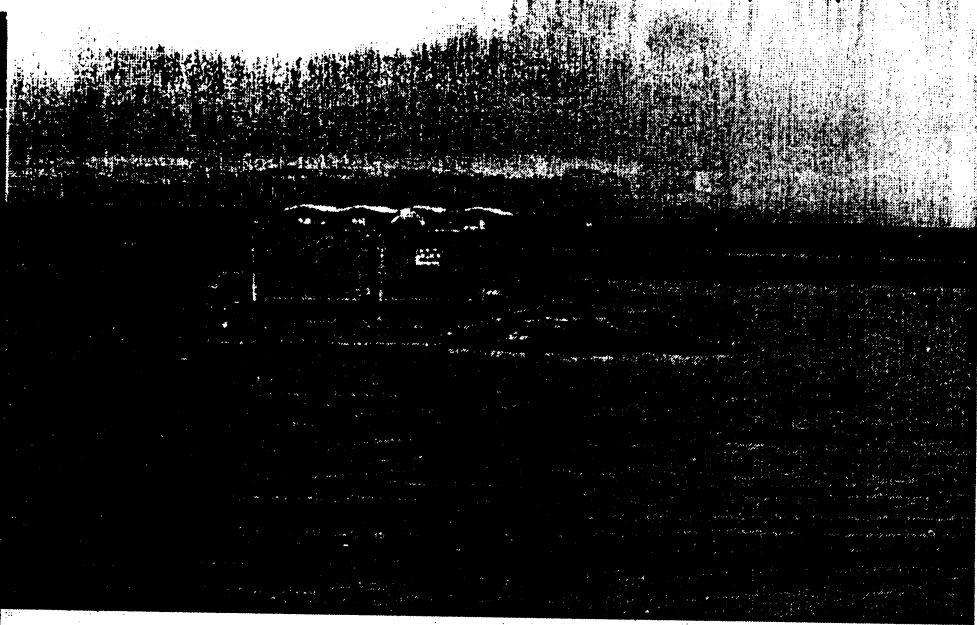


# Trash During Dipnetting

W. BEACH 7/17/2005



S. BEACH 7/30/2005



S. BEACH 7/30/2005

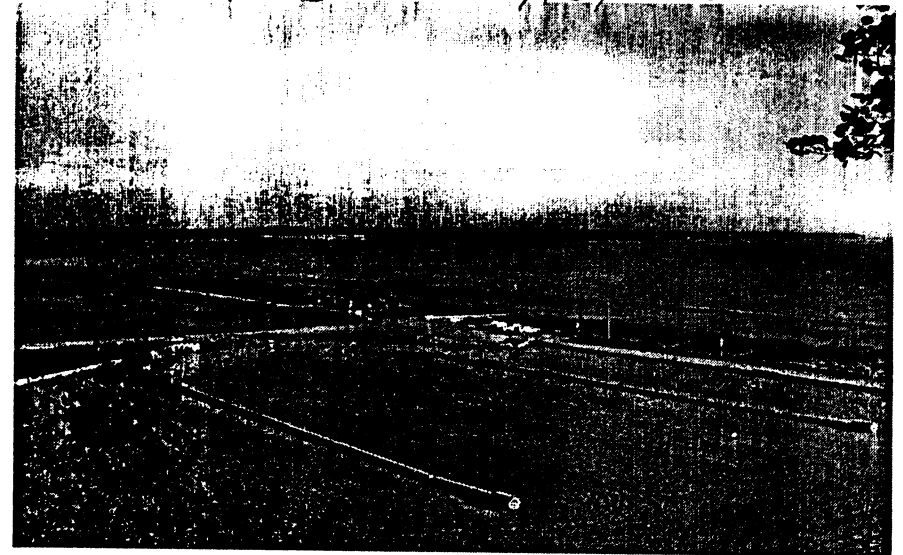
S. BEACH 7/29/2005

# Pre-Dipnet Pictures

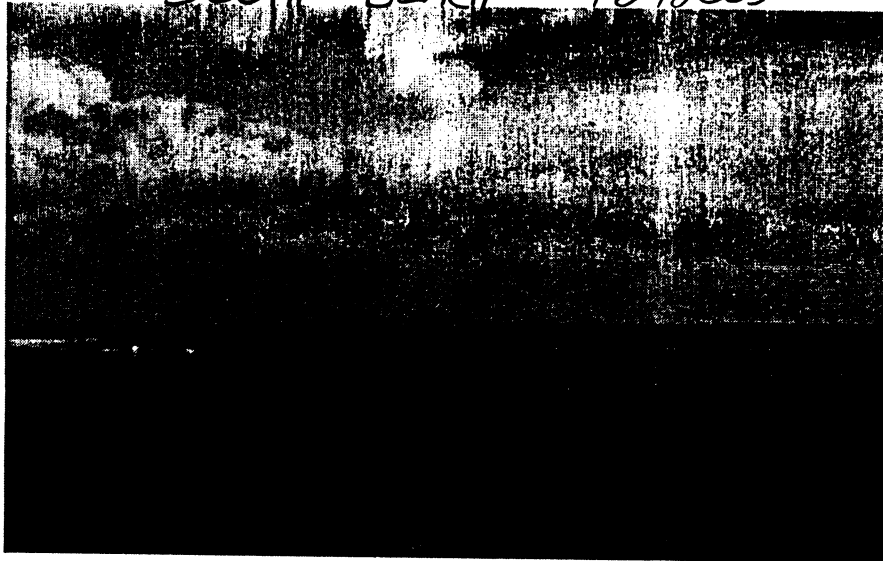
NORTH BEACH 7/2/2005



NORTH BEACH 7/2/2005



SOUTH BEACH 7/2/2005



SOUTH BEACH 7/2/2005





**Pay Station**

Parking  
Lot

S. Spruce St.  
NO PARKING  
Along S. Spruce St.

**Restrooms**

5 min. loading & unloading along Kenai Ave.

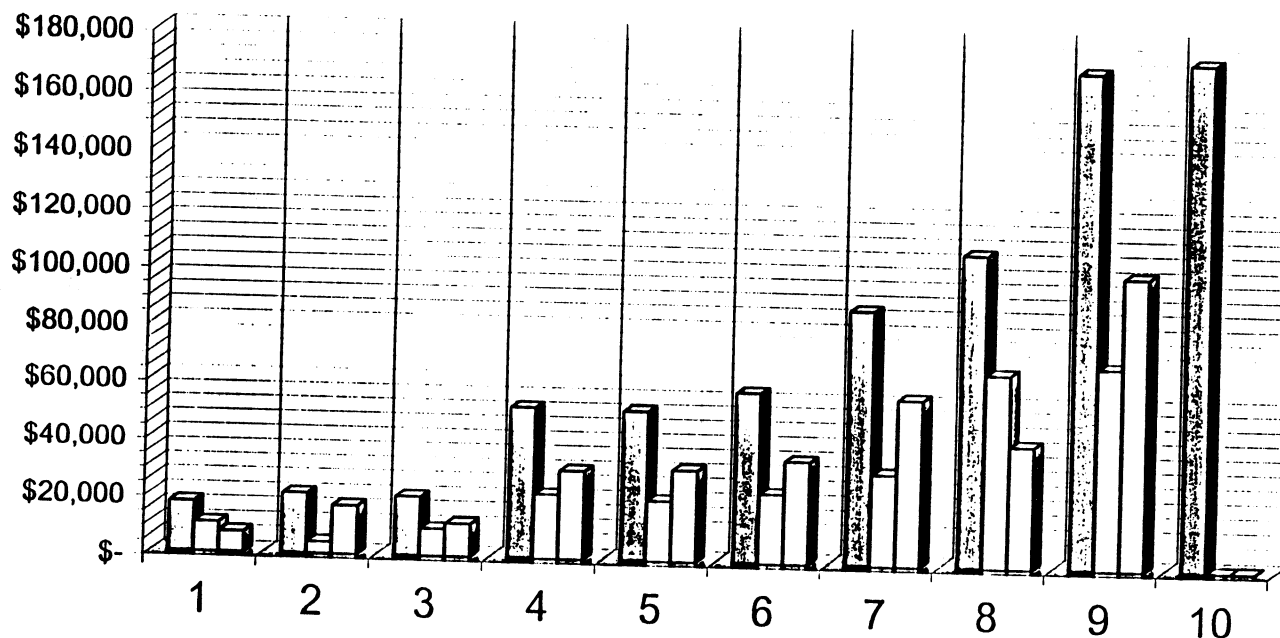
**Portable Toilets  
Dumpsters**

## DIP NET PARKING AND L-RAMP REVENUE 2005

COLLECTION DATE	NORTHSIDE PARKING	SOUTHSIDE PARKING	DOCK	2005 DAY TOTALS	2005 CUMULATIVE	2004 DAY TOTALS	2004 CUMULATIVE
07/09/05	900.00	590.00	602.50	2,092.50	2,092.50	1,820.00	1,820.00
07/10/05	1,790.00	1,216.00	1,060.00	4,066.00	6,158.50	6,243.50	8,063.50
07/11/05	1,090.00	620.00	1,135.00	2,845.00	9,003.50	5,974.50	14,038.00
07/12/05	1,610.00	956.00	1,775.00	4,341.00	13,344.50	2,510.00	16,548.00
07/13/05	2,870.00	1,408.00	3,310.00	7,588.00	20,932.50	4,130.00	20,678.00
07/14/05	3,069.00	1,730.00	2,890.00	7,689.00	28,621.50	9,403.25	30,081.25
07/15/05	3,711.00	2,837.00	4,189.75	10,737.75	39,359.25	11,488.75	41,570.00
07/16/05	3,104.00	2,833.00	3,599.00	9,536.00	48,895.25	11,012.00	52,582.00
07/17/05	9,828.00	3,847.00	4,022.00	17,697.00	66,592.25	15,306.42	67,888.42
07/18/05	2,970.00	1,700.00	2,688.00	7,358.00	73,950.25	12,613.30	80,501.72
07/19/05	3,671.00	1,870.00	2,870.00	8,411.00	82,361.25	10,935.00	91,436.72
07/20/05	3,170.00	1,560.00	3,255.00	7,985.00	90,346.25	9,963.90	101,400.62
07/21/05	7,567.00	2,715.00	2,405.00	12,687.00	103,033.25	7,136.00	108,536.62
07/22/05	5,750.00	2,610.00	2,970.00	11,330.00	114,363.25	10,391.25	118,927.87
07/23/05	4,879.00	4,707.00	2,660.00	12,246.00	126,609.25	8,060.00	126,987.87
07/24/05	5,110.00	2,501.29	1,970.00	9,581.29	136,190.54	10,320.10	137,307.97
07/25/05	1,650.00	1,160.00	2,072.00	4,882.00	141,072.54	7,842.00	145,149.97
07/26/05	2,080.00	770.00	1,565.00	4,415.00	145,487.54	3,145.00	148,294.97
07/27/05	1,590.00	650.00	1,164.00	3,404.00	148,891.54	2,995.00	151,289.97
07/28/05	1,600.00	330.00	991.00	2,921.00	151,812.54	3,962.00	155,251.97
07/29/05	2,558.00	1,380.00	1,813.00	5,751.00	157,563.54	3,465.00	158,716.97
07/30/05	2,390.00	2,020.00	1,355.00	5,765.00	163,328.54	4,889.00	163,605.97
07/31/05	4,413.31	3,668.00	1,655.00	9,736.31	173,064.85	6,346.75	169,952.72
<b>TOTALS</b>	<b>\$77,370.31</b>	<b>\$43,678.29</b>	<b>\$52,016.25</b>	<b>\$173,064.85</b>			

NORTH/SOUTH SIDE PARKING - - - - -	<b>\$121,048.60</b>
DOCK LAUNCH/PARKING - - - - -	<b>\$52,016.25</b>
TOTAL - - - - -	<b>\$173,064.85</b>

# Revenue / Expense Comparison\* Dip Net Fishing in Kenai



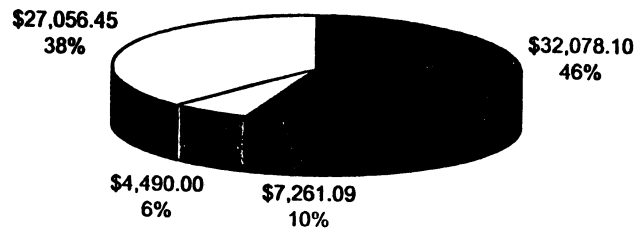
\* This information is an approximation of expenses incurred by the various departments involved with the management of the Personal Use Fishery crowds. It does not consider administration costs such as planning, meetings, training and equipping employees, or composing and editing press releases. Furthermore, the estimates do not include costs associated with unscheduled responses to the beach and boat launch by police, fire, parks, or city dock staff or costs incurred from installing the floats at the boat launch, and maintaining the ramp.

	Year	Revenue	Expenses	Income/Loss
1	1996	\$ 16,959.06	\$ 10,025.82	\$ 6,933.24
2	1997	\$ 20,548.85	\$ 4,064.50	\$ 16,484.35
3	1998	\$ 20,029.41	\$ 9,056.30	\$ 10,973.11
4	1999	\$ 51,642.60	\$ 21,735.28	\$ 29,907.32
5	2000	\$ 51,178.85	\$ 20,273.07	\$ 30,905.78
6	2001	\$ 58,368.01	\$ 23,454.09	\$ 34,913.92
7	2002	\$ 87,939.00	\$ 30,931.31	\$ 57,007.69
8	2003	\$ 107,927.00	\$ 66,294.00	\$ 41,633.00
9	2004	\$ 169,952.72	\$ 69,123.00	\$ 100,829.72
10	2005	\$ 173,464.85	\$ -	\$ -

Inf-1

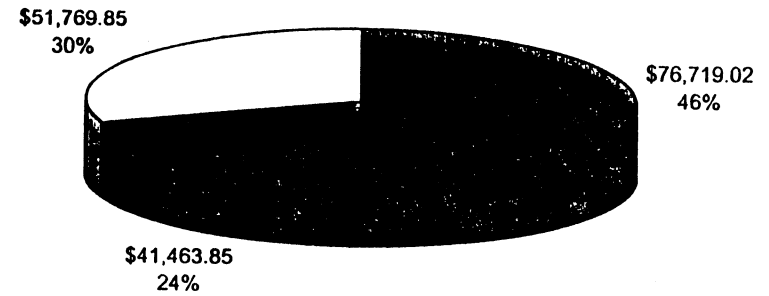


**DIPNET REVENUE 2002**



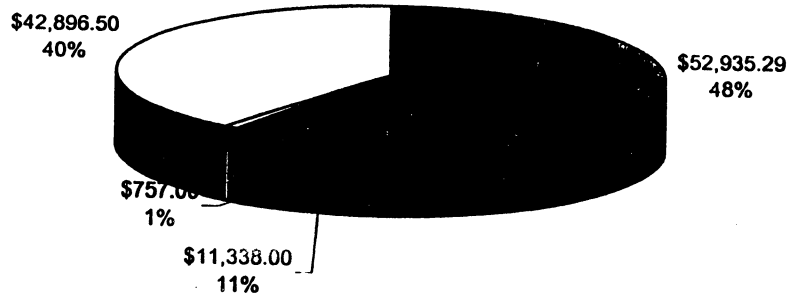
■ NORTHSIDE PARKING   ■ SOUTHSIDE PARKING  
 □ DOCK PARKING   □ DOCK L-RAMP

**DIPNET REVENUE 2004**



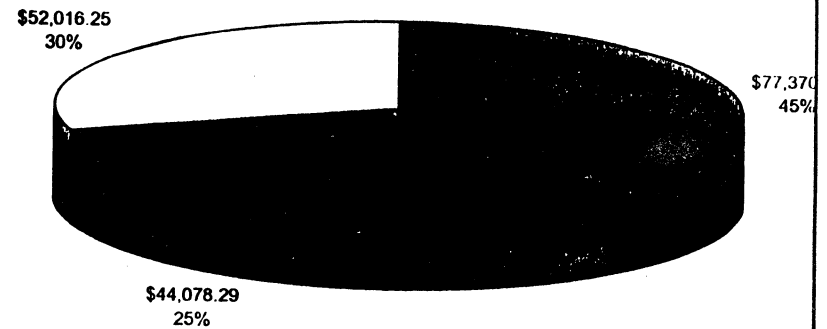
■ NORTHSIDE PARKING   ■ SOUTHSIDE PARKING   □ DOCK

**DIPNET REVENUE 2003**



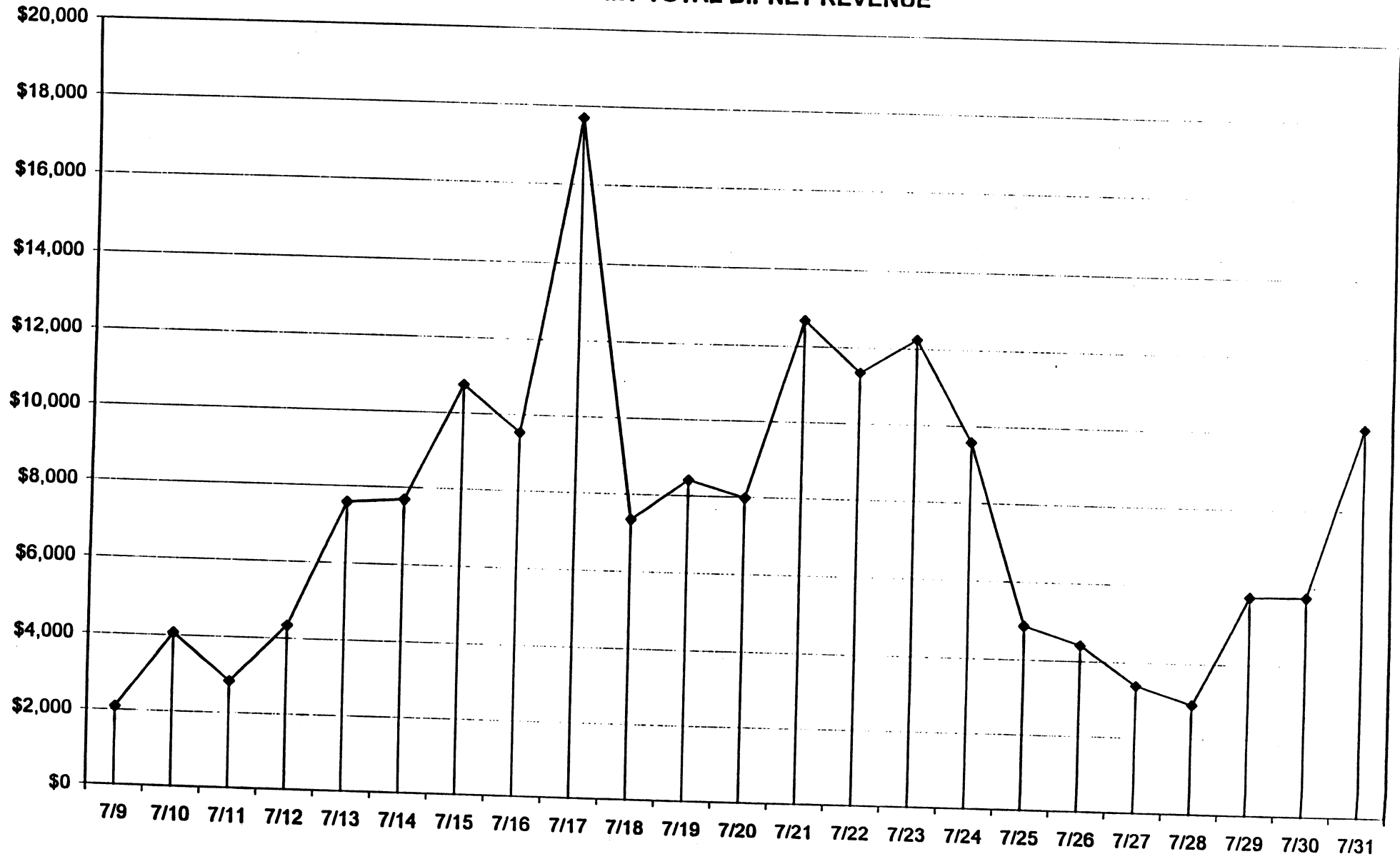
■ NORTHSIDE PARKING   ■ SOUTHSIDE PARKING  
 □ DOCK PARKING   □ DOCK L-RAMP

**DIPNET REVENUE 2005**



■ NORTHSIDE PARKING   ■ SOUTHSIDE PARKING   □ DOCK

# 2005 DAILY TOTAL DIPNET REVENUE



## Keith Kornelis

---

**From:** Keith Kornelis  
**Sent:** Tuesday, September 20, 2005 9:47 AM  
**To:** City Manager  
**Cc:** Kim Wannamaker; Bob Frates  
**Subject:** 2005 Dip Net Report

Kim,

Under Camping we should make a recommendation that the city not allow camping or fires on the beach from the South Spruce Street beach entrance north to 1/4 mile past the high bluff area.

- There is not enough room on the beach at high tides for campers, vehicles, and dip netters. Traffic has a hard time passing this area at high tides with all of the campers. Tents and vehicles are parked at the higher level and that area is soft from use. The lower area, right at the waters edge, is occupied by dip net fishermen. This leaves a small area for vehicles, including commercial set netters, to pass and they need to go at a fast rate of speed so they won't get stuck in the soft sand. This is not a safe situation.
- Campers crowd up close above the high tide line, which can be right up to the dunes. Some campers have even camped on the dune grass and built fires in the dunes. Campers have climbed up on the hill side to cut wood for fires, even live trees. Empty fuel and fire starter containers were found again this year indicating flammable liquids are being used.
- Campers build fires. They ignore the "No Fire" signs. Smoke from the fires causes problems with the local residences.
- Campers created trails into the wetlands and used the area as restrooms leaving toilet paper, trash, and other deposited items.

The city should not open Municipal Park to overnight camping. This was stopped years ago because of numerous problems. Dip net fisherman would create even more problems. They would not be the normal sit around the camp fire roasting seamores type campers. Their cloths and gear would be wet and they would therefore be making large fires to dry everything out. They also are going to have fish to clean and take care of. Where do you think the fish guts will go? This park has been designated as a "Municipal Park" for local residences not for out of town dip net fisherman. It is now a day park for families and local groups to go and enjoy a picnic and if it is open to camping the locals would have to contend with long term campers who may be there for the summer. When the city closed this park to camping we told the local residences that it would be a day park for the residences and it should stay that way. If this park was open to camping it would at least take a full time attendant or police officer assigned to the park. It would be a mistake to open this "Municipal Park" to non municipal camping visitors.

Here is the Public Works Dip Net Report for 2005.



2005-09-19 Dip Net  
Report.doc

Keith Kornelis, Public Works Manager  
907-283-8232 City Safety Coordinator  
Fax 283-3014 Harbormaster

KENAI CITY COUNCIL MEETING  
SEPTEMBER 15, 2004  
PAGE 4

Council Member Gilman **MOVED** to purchase the photograph and take the funds from the Legislative account. Council Member Porter **SECONDED** the motion with Council Member Swarner requesting **UNANIMOUS CONSENT**. There were no objections. **SO ORDERED.**

**ITEM C:**                      **UNSCHEDULED PUBLIC COMMENTS**

**Jim White, 1509 Toyon Way, Kenai** -- White noted his home is situated along the bluff and reported there had been more camping on the beach during the dip net fishing season this year. He stated his concerns of smoky camp fires (some very close to the beach grass); loud car radios of vehicles parked on the beach; drunken individuals using foul-language; and, the beach grass being used as a public toilet. He also noted, a really good job was done during the season in removing litter, 'no open fire' signs placed along the beach, etc. White added, he understands the beach is for everyone's use, but believes the negative concerns will get worse as the fishery becomes more popular.

A brief discussion followed in which it was suggested residents come to a meeting to express their concerns; the camp fire issue had been addressed in the report included in the packet; and, the City will probably have to consider additional regulations.

**ITEM D:**                      **REPORTS OF KPB ASSEMBLY, LEGISLATORS AND COUNCILS**

**Assembly Member Betty Glick** -- Glick reviewed discussions and actions taken by the Borough Assembly at their September 7 meeting. She noted, the next meeting would be held in Homer and the Borough would be holding a surplus sale on September 25.

**ITEM E:**                      **REPORTS OF KENAI CONVENTION & VISITORS BUREAU  
BOARD AND KENAI CHAMBER OF COMMERCE**

**Kenai Convention & Visitors Bureau** -- Council Member Porter reported the KCVB had hired a new executive director.

**Kenai Chamber of Commerce** -- President Tim Navarre reported Janie Odgers was hired as the new executive director; a teleconference had recently been held with local businesses and representatives from Federal Express, but efforts were ongoing on the matter; the wine and beer auction would be held October 23; and, he and Bill Popp would be traveling to Washington, DC to meet with the congressional delegation regarding funding requests for the Arctic Winter Games.

**BREAK TAKEN: 8:24 P.M.**  
**BACK TO ORDER: 8:36 P.M.**

DATE:	10-5-04
PROJECT:	D Net

To: Kenai City Manager Linda Snow

Cc: Kenai Parks and Recreation Commission  
Kenai Harbor Commission  
Kenai City Council

From: Mary Lee Kornelis  
1513 Toyon Way

Date: October 5, 2004

Last summer, dip netters were allowed to camp on the Cook Inlet beach north of the sewer treatment plant, below Forest/Toyon Way. My neighbors and I are very concerned about the increased danger of fires spreading to the grasses and trees growing between the campsites and our homes.

Because the beach is steeper here, and thus narrower at high tide, campers in this area must locate their sites next to the grass and trees below the bluff. Campers parked vehicles and set up tents and tarps and some groups stayed longer than a week.

Campers built open fires against the driftwood logs and at the base of seven bright red signs, which said, "NO OPEN FIRES." The vegetated area behind the signs was used as a toilet and trash disposal. More frightening than the broken beer bottles were the discarded gallon size gasoline cans campers used to start their fires.

My neighbors and I spent most of dipnetting season last summer with our windows shut to the smell of gasoline and fires burning. We went to bed hoping that someone was watching that the wind would not spread the campfires to the grass and trees and then to our homes.

The City of Kenai has already established a safe place on the south shore of the Kenai River where campers who wish to drive their vehicles on the beach can camp. Fires do not threaten trees and homes there. On the south shore there is no bluff to create updraft wind currents, which carry smoke and cinders.

Most dip netters are nice people who are focused on getting fish, not being responsible campers in a residential area. The police simply can't have continual 24 hour per day contact with campers to control their compliance with signs.

Because of the increased danger please do not allow camping and fires north of the sewer treatment plant.

Thank you very much for your consideration.