

# KENAI POLICE DEPARTMENT

107 SOUTH WILLOW STREET KENAI, AK 99611

Telephone (907) 283-7879

Fax (907) 283-2267



August 21, 2003

To: Linda Snow, City Manager

FM: Chuck Kopp, Chief of Police *me*  
Kim Wannamaker, Lieutenant  
Bob Frates, Parks & Recreation Director  
Keith Kornelius, Public Works Manager

RE: 2003 Kenai River Personal Use Dipnet Fishery

The 2003 Dipnet Report includes this summary memo highlighting significant fishery observations, statistics, expenses and recommendations for the 2004 dipnet fishery; activity reports of Police, Parks and Recreation, and Public Works; and the Seasonal Enforcement Officer report detailing fishery observations, photos and recommendations for enhancing the North and South beach dipnet fishery.

---

The dipnet fishery opened at 6am on Thursday, 7-10-03 and closed at 11pm, Thursday, 7-31-03. Most problems associated with the fishery were anticipated and categorized as typical, and generated more irritation with the frailties of human behavior than actual incurred difficulty.

The Police Department hired two non-sworn, unarmed Seasonal Enforcement Officers (SEOs) whose scheduled shifts provided coverage 7 days a week during the fishery. The SEOs overlapped during the week and worked cooperatively with Parks & Rec, City Dock personnel, and were assisted as needed by Patrol Officers. The SEOs were responsible for City Code enforcement (camping, parking, off-road vehicle operations, ATV use). The two SEOs working this year were experienced, both having worked the same positions last year.

The Department handled 49 dipnet-related calls for service, compared to 38 in 2001 and 49 in 2002. The 49 calls for service in 2003 were actually more, but the daily iron ranger change-outs (Officers assisting Parks & Rec employees) were all logged under a single daily service call rather than individually numbered. The calls for service included ATV & off-road vehicle operations, parking violations resulting in more than 220 warnings, 15 citations and 6 impounds, lost/stolen/found property reports, fishing gear disputes, and lost children and/or pets. The Department also investigated one death at the City Dock, generated 3 investigative reports, and issued one traffic citation for a moving violation.

Sworn Officers spent 33 hrs and SEOs spent 240 hours on dipnet-related activity. A Honda 4-wheeler was again provided by the Kenai River Center and used extensively by the SEOs for patrolling the South Beach.

---

---

KENAI POLICE DEPARTMENT

---

---

2003 Dipnet Fishery expense summaries are noted below:

**Police Department Expenses (Labor)**

Police Officer	(33hrs)	755
Seasonal Enforcement Officer <sup>1</sup>	(240hrs)	<u>2,988</u>
<b>Total</b>		<b>\$3,743</b>

**Parks and Recreation Expense Estimate**

Materials & Services	21,729
Labor	<u>1,147</u>
<b>Total</b>	<b>\$22,876</b>

**Public Works Expense Estimate for Kenai Boating Facility**

Materials and Services	6,447
Labor	<u>6,609</u>
<b>Total</b>	<b><u>13,056</u></b>
<b>Grand Total Expenses</b>	<b>\$39,675</b>

<b>Launch Ramp and Dipnet Parking Revenue</b>	<b>\$107,927</b>
---	------------------

**2003 Concerns and Considerations for 2004**

Signage:

The multiplicity of signs, sizes and locations is confusing to dipnetters who only come to Kenai once a year for the fishery. A master signboard for the North and South beaches would serve as a focal point for dipnetters to review Kenai Municipal Code ordinances, dipnet fishery regulations, and park/camp fees. Individual signs would still be necessary to mark beach access points, handicap parking, and areas prohibited to vehicular traffic. Ideally, this signboard would be located at the pay stations, where the attendant would collect fees, give out information and answer questions related to the fishery.

Paid Parking:

While larger capacity iron rangers were implemented this year and an additional one installed on Dunes Road, there were problems with a noticeable increase in noncompliance with paid parking, particularly on the south beach. Dozens of vehicles were contacted and drivers were reminded of the paid parking requirement but receipts revealed low compliance. The City would have greater compliance by erecting manned pay booths, like at the City Dock, with attendant(s) receiving payment from drivers 17 hours per day (6am – 11pm)

---

<sup>1</sup> 2002 and 2003 labor costs are for both SEO's

---

## KENAI POLICE DEPARTMENT

---

during the fishery. A pay-as-you-arrive procedure would greatly reduce time spent by the SEOs patrolling the parking areas checking compliance, availing that time for expenditure in other areas. The City would see an increase of approximately \$20,000 in revenue by providing parking attendants.

### South Beach Access:

In order to effectively collect revenue from all dipnet participants on the South beach, the Cannery Road vehicle access at the Perrizo residence should be closed to vehicular traffic for the three-week fishery. This would funnel all traffic past the City pay station on Dunes Road. See map attached.

Restrooms: Several complaints were received regarding service (toilets full) and cleanliness of the North beach port-a-potties. No complaints were received regarding the South beach port-a-potties. It was noted that the \$18,000 spent each year by the City on port-a-potties for the 3-week fishery could be allocated toward purchase (\$23,500) of a precast, vandal-resistant concrete toilet (manufactured locally) like those in use at local state parks & boat launch sites. See brochure for double vault, precast concrete toilet attached.

These units are aesthetically pleasing, and would provide a permanent upgrade to the City of Kenai recreational areas on Kenai Avenue, and on the South beach. The North beach toilet would ideally be positioned at the end of Kenai Avenue where the dipnetters load/off load, where port-a-potties are currently positioned. Another advantage of the double vault precast concrete toilet is that its holding tank is 1,000 gallons per side, versus 25 gallons per port-a-potty. It would take 80 portable toilets to match one precast concrete toilet.

The Police Department investigated one complaint of vandalism to the existing wooden outhouse at the end of South Spruce at the beach. This structure is subjected to repeated arson and vandalism throughout the year.

Camping: Tents were allowed on both beaches this year. This did not create significant police issues, save trash problems on the South beach. However, the City has the resources (personnel) to mitigate this problem to manageable levels. It is recommended that the "No Camping" signs be removed for the 2004 fishery, and a fee schedule with designated beach camping areas be established. The proposed fees are \$20.00 for park & camp, \$10.00 park, & \$10.00 camp (per 12 hr period).

There are three primary concerns with camping: litter, fires, and habitat damage. These will be addressed with an aggressive *Pack It In/Pack It Out* policy, *No Open Fires* rule, and orange plastic barrier fencing to protect the North beach dunes, the North beach bluff below South Forest Drive and Old Town Kenai, and the South beach wetlands. The continuous presence of attendants at the pay stations will help manage each of these concerns.

Traffic Congestion on Kenai Ave: This was not a problem except during mid-fishery weekends, with a flood of dipnetters arriving and leaving within a small time frame. It was anticipated that a lot of vehicles would be on Kenai Ave to unload/load their gear from the beach, and SEOs spent dedicated time maintaining traffic control, impounding vehicles as applicable, to keep the process moving as smoothly as could be expected.

For a more in depth review of the 2003 dipnet fishery, please review the departmental reports included with this summary memo.

# Memorandum

To: Lt. Wannamaker  
From: J. White and J. Jenckes, Seasonal Enforcement Officers  
Date: 9/2/2003  
Re: Dipnet Fishery 2003

---

The information included in this report is a summary of the Personal Dipnet fishery that took place at the mouth of the Kenai River starting on Thursday, July 10, and concluding on Thursday, July 31, 2003.

The fishery opened on Thursday, July 10<sup>th</sup> at 0600 hours. At this time the fishing was limited to certain hours of the day: 0600-2300. The first week of the fishery was relatively slow. There was no shortage of parking on either the north or south beaches. The north beach patrons were more compliant in paying for parking than those of the South beach, perhaps because they were more familiar with the procedures on the North beach from past years. This being only the second year for a parking fee on the South beach, there was less compliance. It seemed as if there was even less compliance on the South beach this year than last.

On Friday, 7-11-03, there was a considerable increase of vehicles and people in the parking lots on both the north and south beaches. Seasonal enforcement officers spent most of the day enforcing the paid parking ordinance on the north beach and kept traffic flowing smoothly on Kenai Avenue. Officer White issued one dipnet related citation. Officer Jenckes issued one dipnet related citation and 8 warnings (4 on the North Beach and 4 on the South beach). On the South beach, enforcement officers explained the reasons for a parking fee, passed out paid parking permits and enforced fee collection.

On Saturday, 7-12-03, there was another increase of vehicles and people on both the north and south beaches. The parking lot on the north beach was near, but never exceeding its capacity for parking. Overall, parking was not a problem, though constant enforcement was needed to keep it so. Vehicles parking past parking medians were quickly red tagged, or if the driver/owner was present, asked to move. Many warnings were served on vehicles that did not display a parking permit. Officer White issued one dipnet related citation. Officer Jenckes issued two dipnet related citations and 35 warnings (18 on the North beach and 17 on the South beach). Compliance on the south beach was extremely low with approximately 5-10% of the vehicles displaying a parking



permit. Again enforcement officers handed out warnings and parking permits. The officers informed the patrons that the parking fee helped cover the cost for the toilets provided by the City.

On Sunday, 7-13-03, the crowd began to clear out in the afternoon. Officer White towed one vehicle illegally parked on Kenai Avenue, and issued two dipnet related citations.

On Friday, 7-18-03, there was a large number of people moving into the north beach parking lot during the evening hours. The parking lot was filled to its maximum capacity and overflow parking was directed to the Little League parking lot. Kenai Avenue had minor congestion because people loaded/unloaded slowly. Much of the enforcement time was spent encouraging persons to unload faster, enforcing "No Parking" on Kenai Avenue and enforcing paid parking in the parking lot. Officer Jenckes issued two dipnet related citations and 25 warnings on the North beach.

On Saturday, 7-19-03, there was a large number of people on both beaches. On the North beach the parking lot was overflowing with many vehicles parked illegally. There were numerous vehicles parked past the parking medians blocking exits, vehicles parked blocking the entrances and exits to the trails leading to the Municipal Park on South Forest and double parked blocking in other vehicles. Overflow parking at the Kenai Little League Park was also full. Overflow parkers quickly began parking in any available space such as the Catholic Church parking lot and the former Kenai Supply parking lot. Enforcement Officers' time was mainly used to keep order in the City's parking lot and on Kenai Avenue. Whenever police presence left the area, vehicles would immediately begin parking illegally in the parking lot and on Kenai Avenue. Officer White impounded five vehicles and red tagged numerous other illegally parked vehicles. Officer Jenckes issued one dipnet related citation and 19 north beach warnings.

The south beach was also extremely busy. There were approximately 250-300 vehicles parked on the beach. Enforcement officers were so busy keeping order on the north beach, they were unable to show a presence on the south beach or enforce the paid parking ordinance.

On Sunday, 7-20-03 both beaches were again crowded. As the day went on, more and more people began exiting the beach. A considerable amount of time was spent on the South Beach enforcing the paid parking ordinance. Officer White gave out 75+ paid parking permits advising owners of the vehicles they needed to pay before they left the beach. Most people said they had no problem with paying the fee, but complained that the iron ranger was not easily located. The Iron Ranger was changed on the south beach by Officer White and contained very few completed parking permits. Compliance was very low with approximately 5% of the patrons paying. On the North beach it was also busy during the day with most persons leaving by late evening. Officer White issued four dipnet related citations and 75+ warnings.

During the next weekend of Friday, 7-25-03, through Sunday, 7-27-03, both beaches were relatively busy with more people than usual on the last weekend of dipnet. The parking lot on the north beach was nearly full, but never exceeded its capacity. A windstorm that began to kick up on Saturday night and thrived on Sunday made the water too rough that it drove away most of the dipnetters. Officer White issued one dipnet related citation, and Officer Jenckes gave out 33 warnings on the north beach.

There were frequent checks made by Seasonal Enforcement Officers at the City dock. There were few problems at the dock this year compared to past years. The main complaint from the city dock concerned overnight camping. At the city dock there are a few poorly placed signs prohibiting overnight camping. More signs in better locations (signs that could be seen when entering the parking lot) would help alleviate this problem. Another way to alleviate this problem would be to have the parking attendant advise patrons of the overnight camping regulations.

## **SPECIFIC OBSERVATIONS AND CONCERNS**

### **NORTH BEACH**

People seem to have a good understanding of the procedures on the North beach parking area. The majority of those parking complied with the \$10 fee, and displayed their permit properly. Those who were non-compliant this year were cited or towed. Enforcement officers gave out hundreds of warnings for paid parking violations and issued many citations. Compliance with the parking fee is not a problem on the North beach parking lot because of constant police presence and enforcement, and four previous years to become accustomed to the procedures. Ideally the City would have an attendant to take direct payment, and then assign a parking space. This would allow any police officer to come to the beach at any time and be told by the attendant, which vehicles were in violation.

On the average fishing day there were few illegally parked vehicles on Kenai Avenue (which were promptly towed and/ or cited), and the majority of those stopped on Kenai Avenue were loading or unloading. The majority of the people did comply with the rules knowing that they were being strictly enforced.

The eventual allowance of camping on both beaches solved many problems and created others. When allowed to camp, the dipnetters left their vehicles parked in the city's parking lot all night creating more revenue for the City. The downside of allowing people to camp on the beach created issues of trash, damage done to the dunes and longer unloading times for families along Kenai Ave. The main problem was trash. By the end of the fishery the beach was littered with miscellaneous trash items (especially aluminum cans and bottles), even with the tide having taken away much of the trash already.

Many dipnetters camped on/in the dunes in every crevasse they could. Enforcement Officers had campers move their camps immediately when such sites were found. There was also damage done to the dunes all along Kenai Avenue where dipnetters had unloaded their gear from their vehicles and walked over the dunes to reach the beach.

The iron ranger on the north beach was much larger than last years', which alleviated the problem of overflowing. Also, there were no problems with the envelopes running out. This helped out in enforcing the parking fee knowing that each person had access to the fee envelopes.

The signs in the parking lot and along Kenai Avenue that read "NO CAMPING " should be taken down and new signs made to explain the new rules for 2004.

Over the past four years of the fishery signs have been removed/ stolen from the North beach area. Several "1 HOUR PARKING" signs are missing, which led to paying persons parking there. This makes it difficult for those wanting to just park for an hour, to find a place to park. This caused officers to wait an hour before citing or towing vehicles in the parking lot, to allow for persons who could not find a spot in the one hour parking area.

Parking permits also left Enforcement Officers answering many questions. Information on the parking permits is sometimes misleading. The permits still state there is "No Camping Allowed." If the City decides to allow camping in the future this phrase should be deleted from the parking permit. Because the City uses the same permit for both sides of the river, there is information that applies to the North beach that does not apply to the South beach. The main reason for confusion was because the permit stated that people had to leave for 12 hours after staying for 12 hours. This only applies to the North beach parking lot, and only when it is busy (to allow everyone the chance to park and fish).

Enforcement Officers placed cones at the end of each median, hoping this would keep vehicles from parking beyond them. This seemed to solve the problem last year, but not this year. Cars would simply park past the medians and place the cones on the outside of their vehicle. This happened one time where approximately 9 vehicles had parked past the median with KPD cones on the outside. All vehicles were red tagged and towed (if their owner didn't move them before the tow arrived) because they blocked entrances and exits to the lot. This only happened when there were no other places to park in the lot.

## **South Beach**

A high number of warnings for failure to pay were issued. People seemed to be cooperative once their questions about fees were answered, but when the iron rangers were picked up the numbers showed something completely different. An attendant collecting the money at the end of Dunes Road is an answer to this problem. To help funnel people past the pay station, the City would need to temporarily stop vehicle access to the beach off Cannery Road during the fishery, keeping it open only to pedestrians.

The SEOs would then be in a much better position to immediately ticket a vehicle for not paying, no warning given. This would alleviate the problems with the fee signs and the iron rangers.

The fee signs for the South beach caused confusion. First, the wording on the sign off Dunes Road - "Seasonal Fee", caused some people to believe if they paid once they were able to park there indefinitely during the "season." The sign should read something like "Dip Net Beach Parking Fee." This may cut down on the confusion.

Second, the Dunes Road iron ranger was a long way from the parking area so some people did not think the fee applied to them. People knew there was a fee area; they just did not understand where it was. Others were confused because the beach iron ranger was not close in proximity to the toilets, so they were unsure where to pay.

Third, the placement of the "Pay Here" sign at the beach iron ranger needs to be changed for 2004. This sign faced away from the parking area and was relatively small, so many people were not able to see it. Parks and Recreation put up orange fencing around the beach iron ranger, which increased the visibility of it, but did not help compliance. Another tactic used to increase compliance was placing orange signs on the port-a-potties alerting people of the iron ranger, but still that did not seem to help. Again, to alleviate confusion it might help to place a manned booth at the end of Dunes road.

Camping on the south beach was not an issue, due to the policy of as long as they were paying they were allowed to set up a tent.

Trash was an issue on the south beach. Early in the fishery a trash pile began to accumulate against the side of the toilets. By the end of the fishery it was very large. It took Parks and Rec four truckloads to remove the trash. In 2001 the City of Kenai placed trashcans on the South beach, hoping to curb the trash problem there. However, as garbage filled the cans, persons continued to pile trash around the can creating a problem. In 2002 no trashcans were provided and a "pack it in, pack it out" policy was implemented. This policy is somewhat successful with only a few incidents of trash piles needing cleaned up.

Driving in the vegetated areas was not a major problem this year. I found no vehicles in the vegetated areas and only a few ATV tracks. The City may want to purchase more barrier fencing or other barricades blocking vehicles from driving so close to the dunes and vegetation.

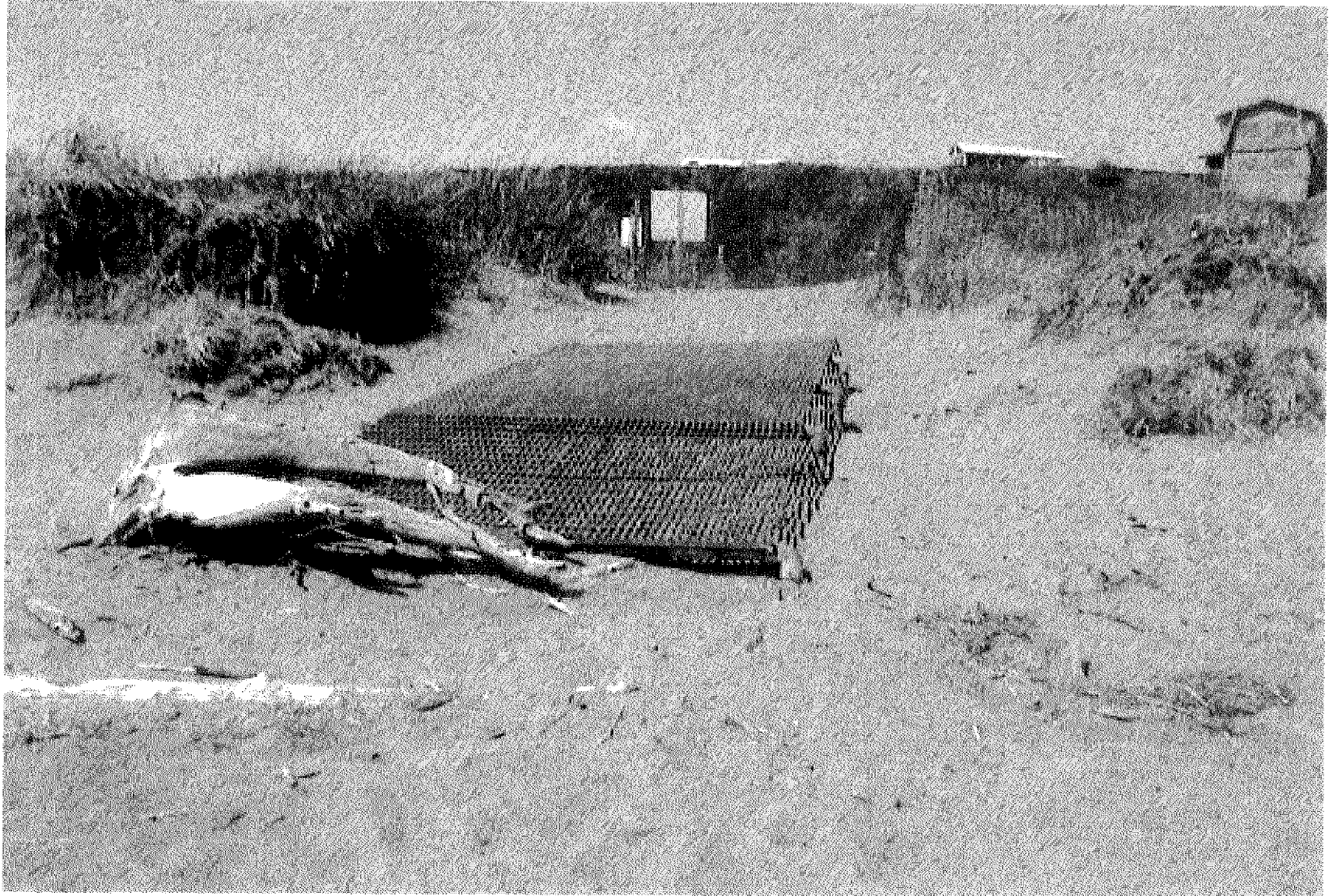
ATV's are very popular on the south beach. Most often juveniles, whose parents are dipnetting, are operating them. SEOs wrote several citations and issued warnings for operators under 18 not wearing a helmet. Fast, reckless driving of the ATVs among the dipnetters is an issue requiring enforcement action.

## **Dipnet Fishery 2003 - Photo Log**

- Photo 1:** The walkway to the north beach from Kenai Avenue. It is a metal grate walkway that cuts through the dunes to serve as a main entrance to the beach. The walkway is located at the end of Kenai Avenue near the turnaround to accommodate dipnetters and their gear. This photo shows no trash just natural debris from the ocean. This photo was taken before the 2003 dipnet fishery.
- Photo 2:** The entrance to the south beach at the end of Dunes Road. This photo was taken before the 2003 dipnet fishery.
- Photo 3:** The boundary (large stones) that was placed at the end of Old Cannery Road to protect the Perrizo property. The Perrizo's property extends to the mean high tide mark. The City placed large stones along the beach access at the end of Old Cannery Road to prevent dipnetters from cutting across and damaging their property. This photo was taken before the 2003 dipnet fishery.
- Photo 4:** A view from the municipal park on South Forest overlooking the City parking lot at the end of South Spruce. This photo was taken before the 2003 dipnet fishery.
- Photo 5:** A common view of the south beach during the dipnet fishery. This photo was taken during the 2003 dipnet fishery.
- Photo 6:** South beach on a slow day. This photo also shows what the south beach looks like at high tide (vehicles pushed high on the beach). In this photo there are approximately 30 vehicles on the south beach. On a busy weekend day there are approximately 250-300 vehicles on the south beach. This photo was taken during the 2003 dipnet fishery.
- Photo 7:** North beach parking lot at near maximum capacity during the 2003 dipnet fishery.
- Photo 8:** North beach parking lot partially filled during the 2003 dipnet fishery.
- Photo 9:** Refuse on the north beach following the 2003 dipnet fishery. Refuse that was commonly seen on the north beach were soda cans and fish waste.
- Photo 10:** Refuse on the south beach following the 2003 dipnet fishery. Refuse seen in this photo are fish waste, soda cans and a wooden structure (possible part of a former campsite).

- Photo 11:** The site of a previous campfire. In the fire pit are plastic and Styrofoam. This photo was taken on the south beach after the 2003 dipnet fishery.
- Photo 12:** Two "*No Vehicles Beyond this Point*" signs along the beach access on the north beach. Vehicles are not permitted to the east of the access toward the mouth of the river to prevent erosion. At the beginning of the dipnet fishery there were three signs placed, one was taken during the season. This photo shows the remaining two signs. This photo was taken after the 2003 dipnet fishery.
- Photo 13:** This photo was taken on the north beach and depicts refuse on the beach and the dunes. Many paths were made throughout the dunes as dipnetters packed their gear to the beach. The left of this photo shows one of these paths. This photo was taken after the 2003 dipnet fishery.

**Photo 1**





**Photo 2**

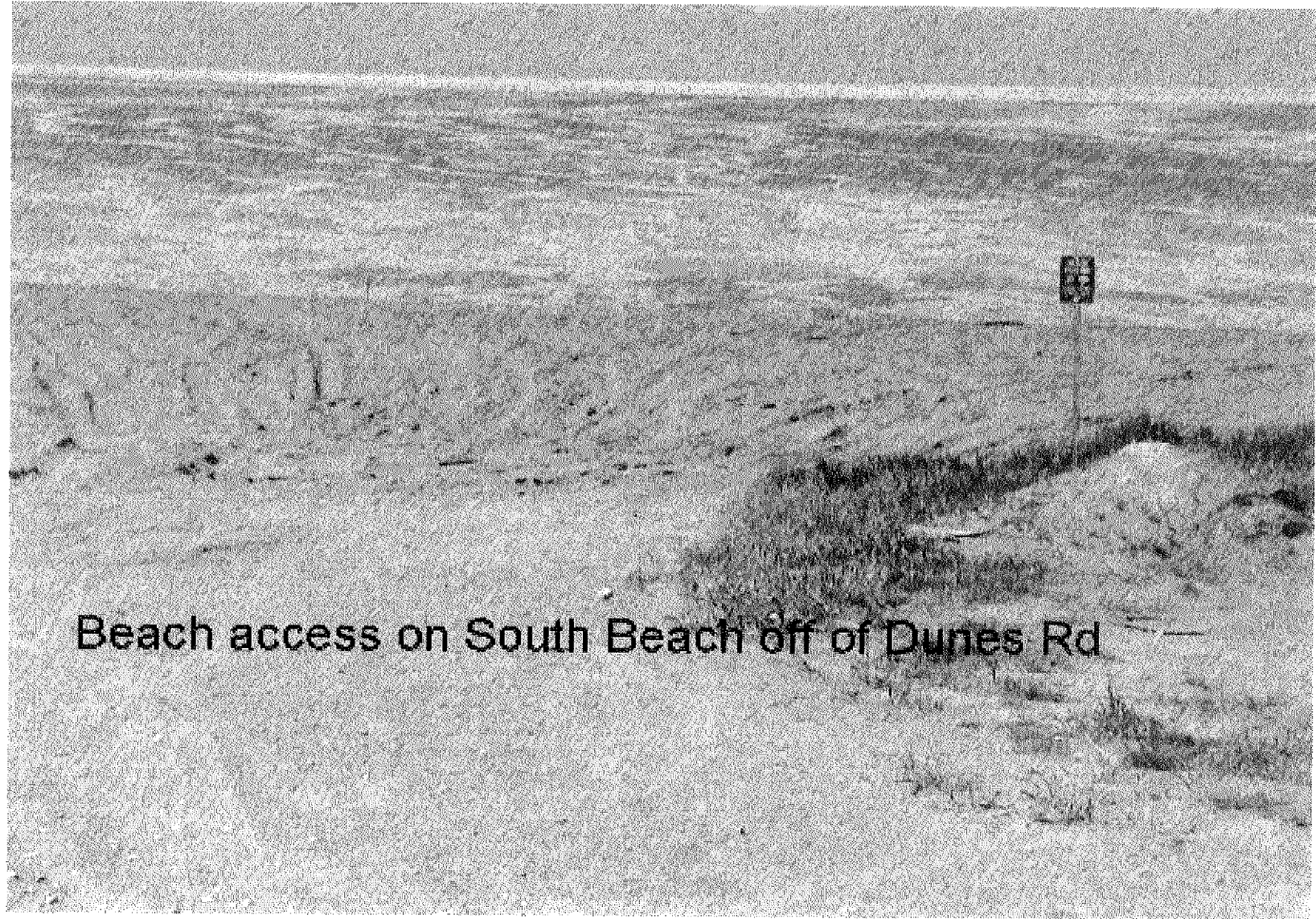
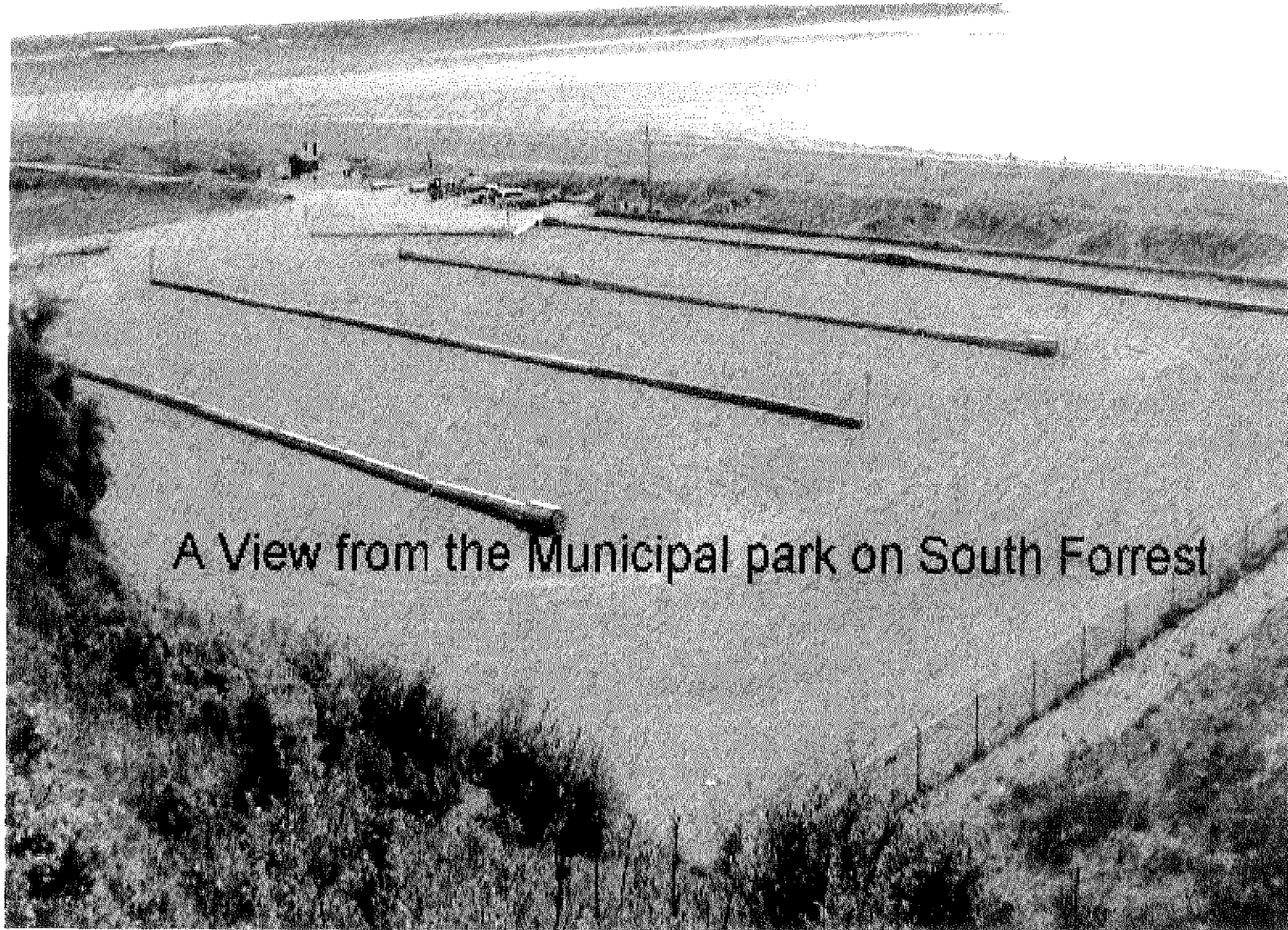




Photo 3



Photo 4



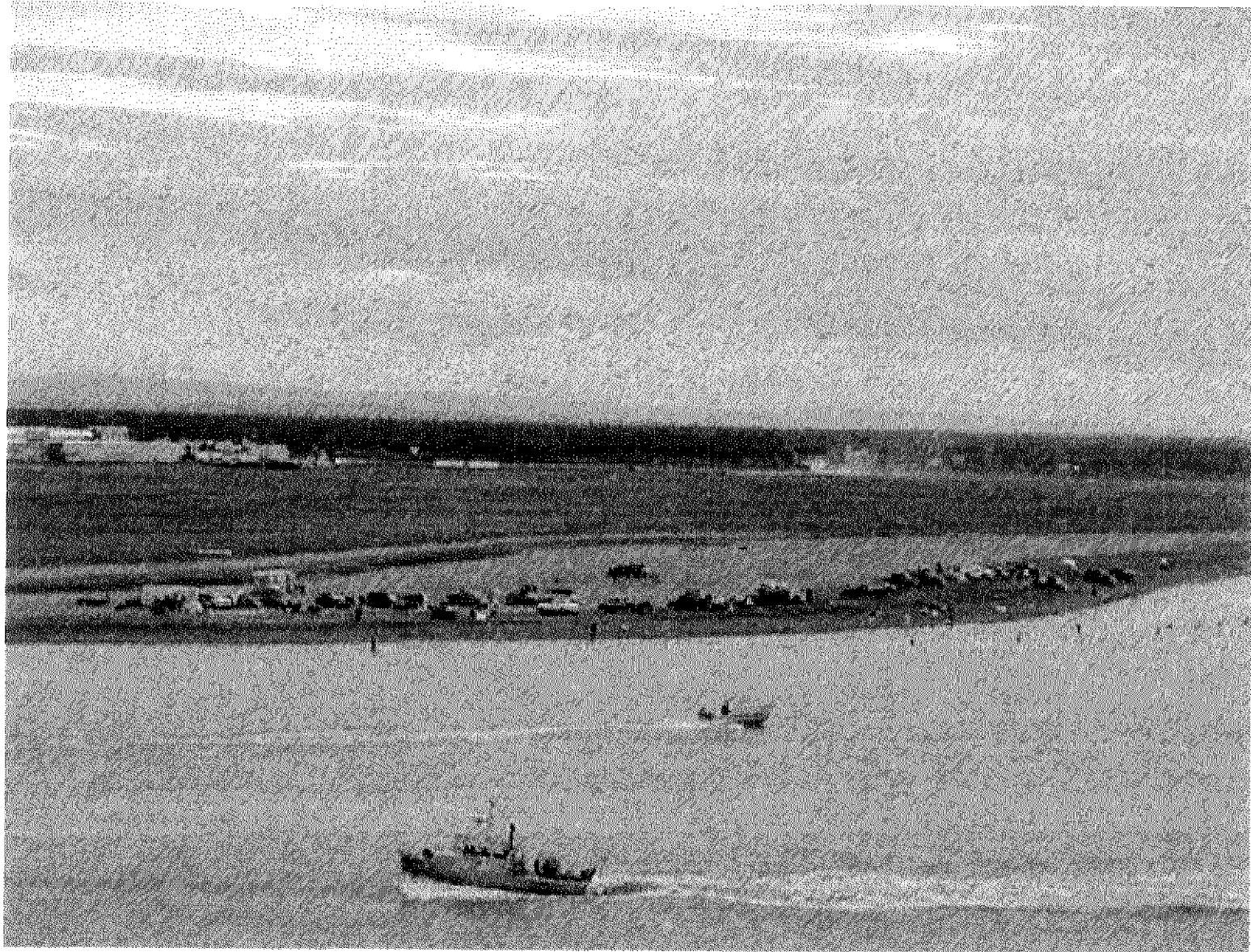
A View from the Municipal park on South Forrest

**Photo 5**





**Photo 6**



**Photo 7**



Photo 8

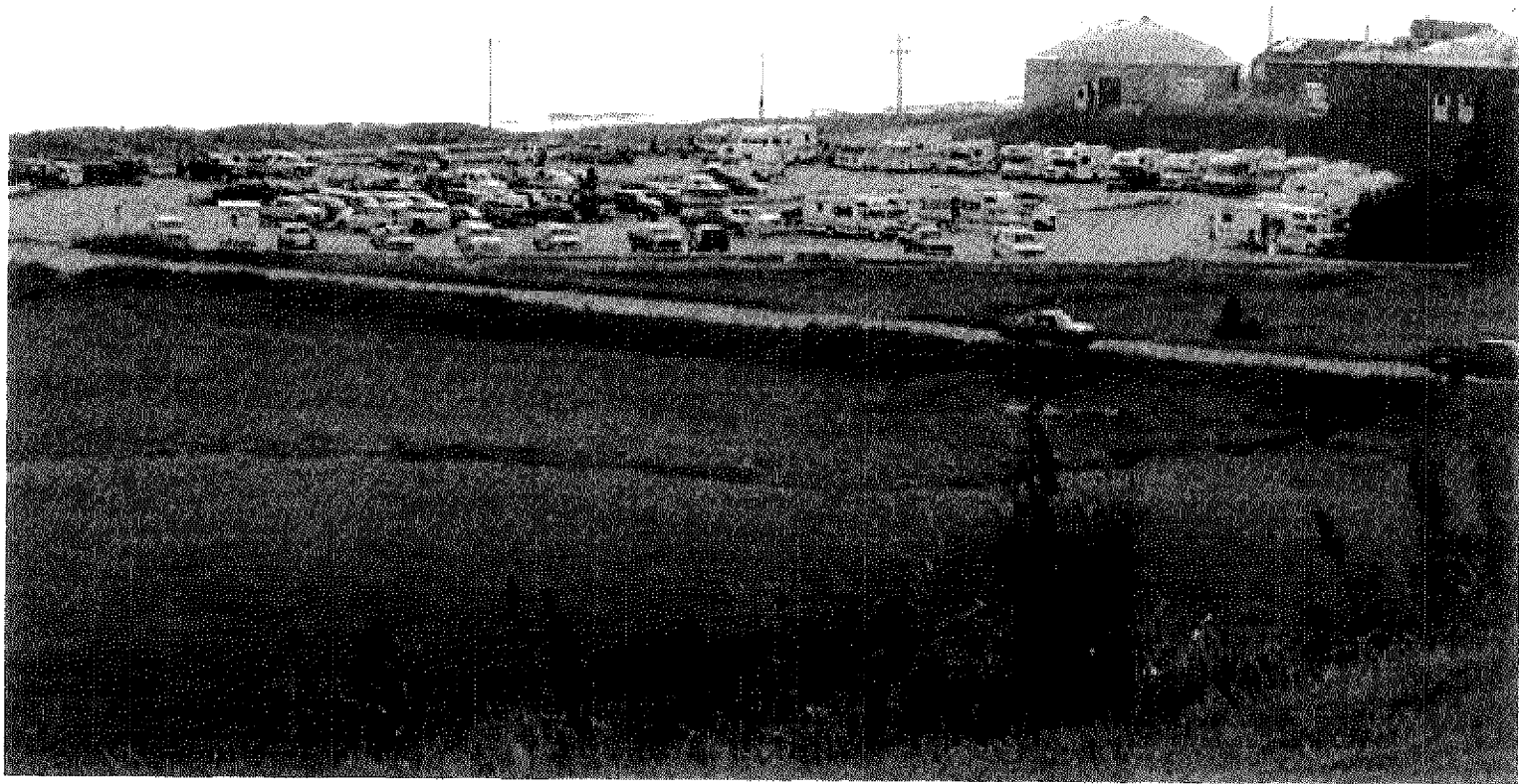




Photo 9



Photo 10

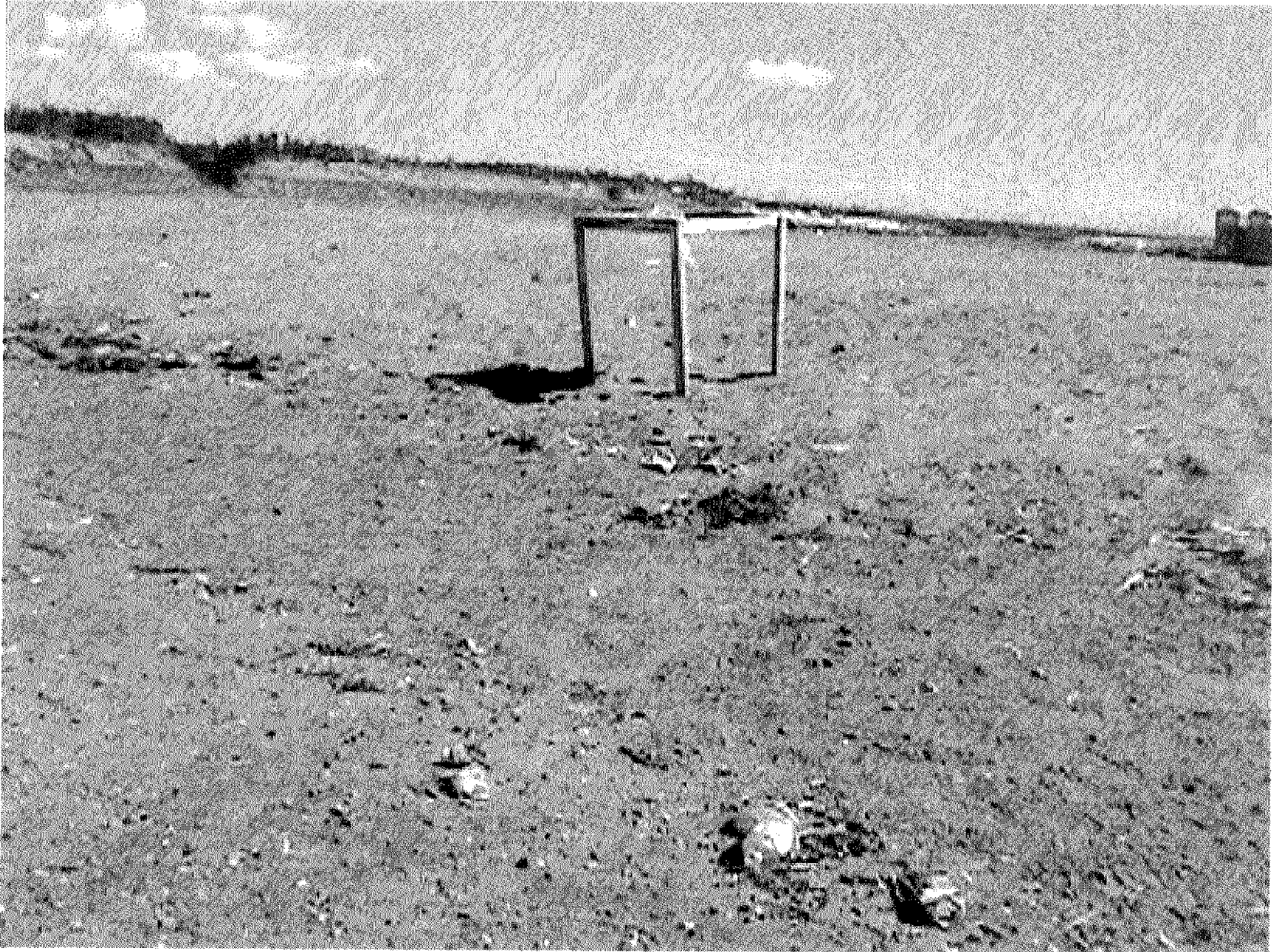


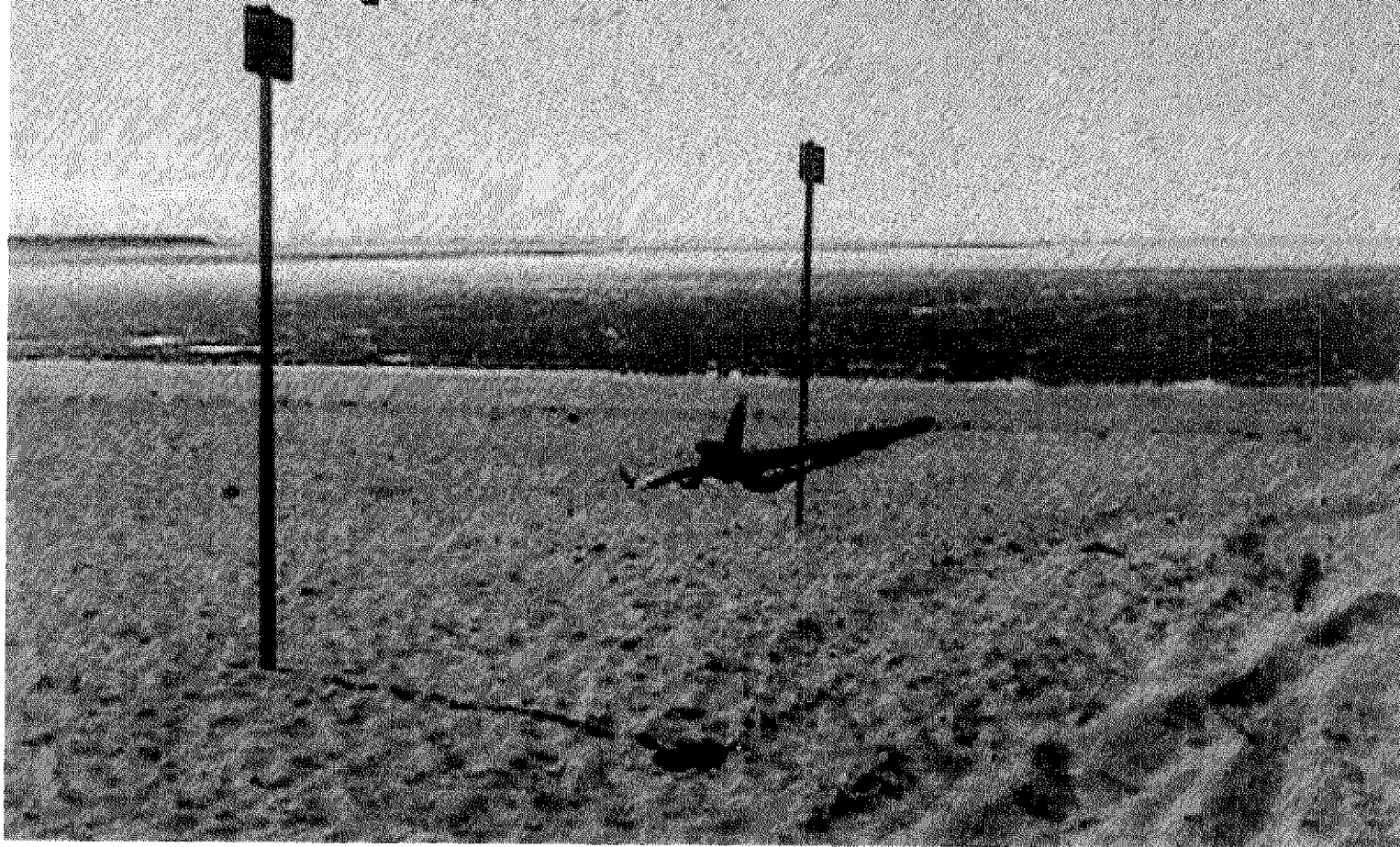


Photo 11



Photo 12

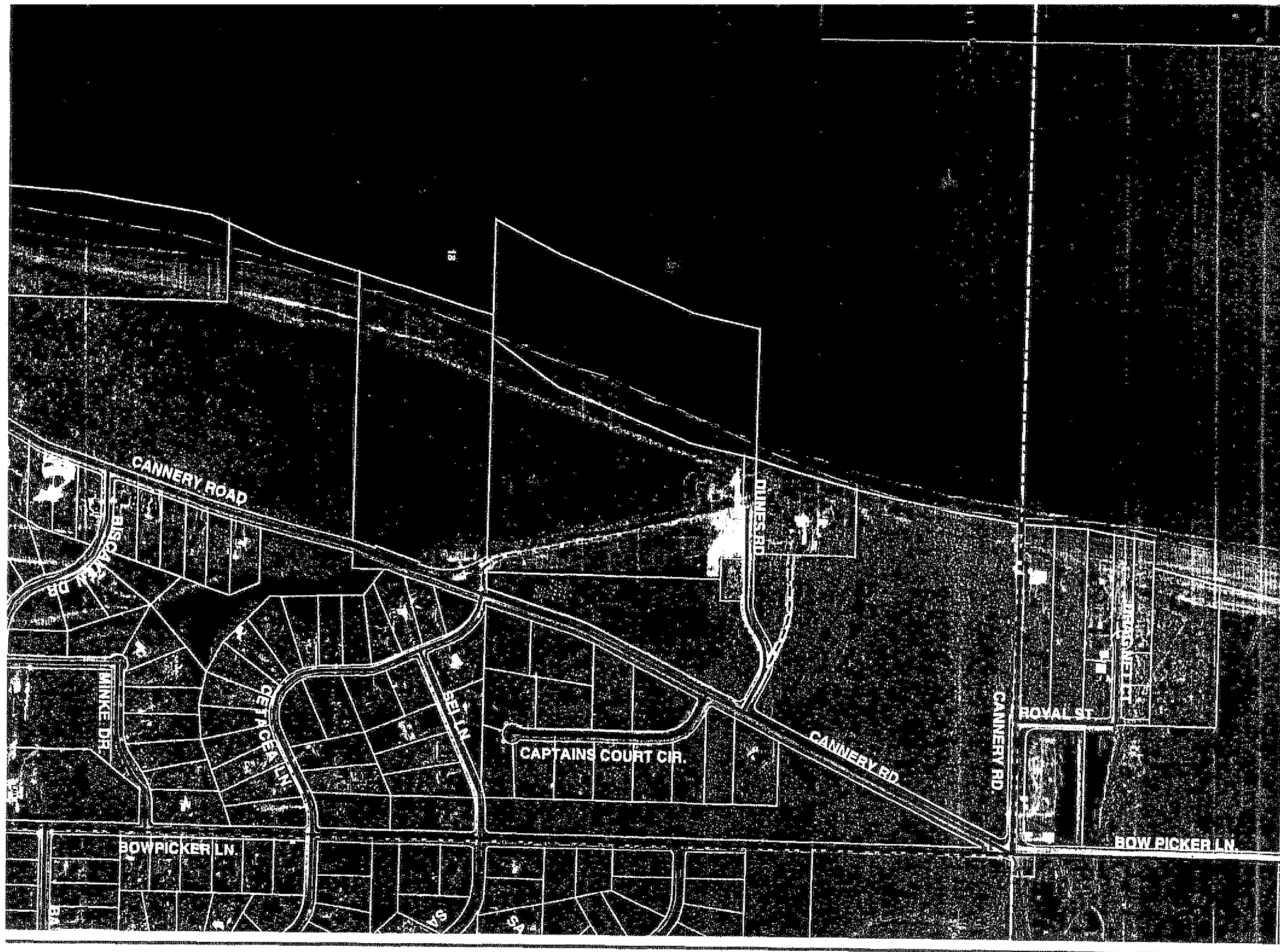
Third sign was knocked down  
half-way into the season.

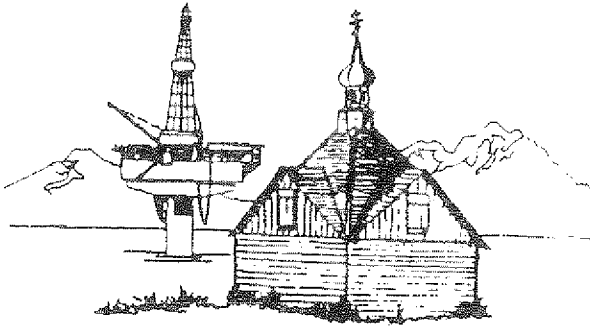




**Photo 13**







## CITY OF KENAI

*"Oil Capital of Alaska"*

210 FIDALGO AVE., SUITE 200 KENAI, ALASKA 99611-7794  
TELEPHONE 907-283-7535  
FAX 907-283-3014



### MEMORANDUM

**TO:** Kim Wannamaker, Police Lt.  
Keith Kornelis, Public Works Manager

**FROM:** Robert J. Frates, Kenai Parks & Recreation Director *RF*

**DATE:** August 14, 2003

**RE:** Dip Net Fishery – Parks & Recreation Activity Report & Expenses

The following is a brief Activity Report of the 2003 Personal Use Fishery.

#### Litter and Fish Waste Control

A total of four (4) dumpsters were provided this season. Dumpsters were originally scheduled for twice-weekly service, however, was changed to three (3) days weekly on July 16 as a result of trash accumulation. The fish waste dumpsters were filled with trash during the first 2 days, however, after Peninsula Sanitation moved them to a different location the problem was rectified.

The "pack it in, pack it out" was generally effective on the South Side. A dumpster along with a kiosk should be placed on Dunes Road to facilitate this process.

#### Sanitation Facilities

Facilities were serviced daily, including the City's permanent restroom. No problems were reported back from Al Gagnon and Sons and dip net participants were generally pleased with services. The South Side restrooms were located closer to dip net activities, and thus, eliminated complaints from users concerning the distance one had to walk last season.

#### Sand Dune Protection

A significant amount of time was dedicated to shoveling walkways on the North Side prior to the season. Walkways should have been elevated more to eliminate sand build-up. During the course of the season it became extremely difficult for participants to discern the walkway areas from other paths that have been created.

The orange safety fencing was repaired several times throughout the season and should be replaced with a more permanent type fence that requires less maintenance.

#### Fee Collection Boxes

The fee collection boxes used at Dunes Rd and the North Beach were enlarged this season in an attempt to double the carrying capacity, thus, eliminating emergency calls to change out boxes.

Consideration should be given to changing the wording on the sign located near the fee collection boxes on Dunes Rd. It was reported that some participants thought this was a one-time fee area of \$10 rather than a per visit basis.

#### Post Clean-up Activities

Fish waste accumulation on the North Side after the season was significant as a result of low tides. A total of 8 hours were spent raking the beach after the season.

ALPAR spent a day cleaning up on the South Side. This was a significant timesaving for the Parks Department since all litter had already been retrieved and piled up ready for delivery to the landfill. As mentioned, a dumpster near the parking lot will help eliminate this problem next season.

#### Other Miscellaneous Suggestions for Next Season

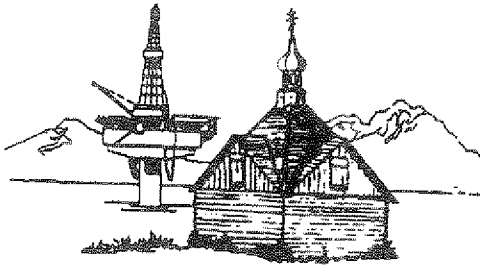
- A. Establish a season pass for participants.
- B. Install a temporary fee collection station (shack) on Dunes Rd.

#### ESTIMATES FOR MATERIALS & SERVICES

Portable Toilets	\$17,000
Dumpsters	1,600
Fish Waste Dumpsters	605
Iron Ranger Modifications	2,324
Dip Net Info Cards	200
<b>Total</b>	<b>\$21,729</b>

#### LABOR ESTIMATE

Removing Sand From Walkways	\$252
Fee Collection, Restroom Cleaning, Litter Control	730
Iron Ranger Installation	64
Dip Net Info Distribution	26
Raking Beach	75
<b>Total</b>	<b>\$1,147</b>
<b>Grand Total</b>	<b>\$22,876</b>



## CITY OF KENAI

*"Oil Capital of Alaska"*

210 FIDALGO AVE., SUITE 200 KENAI, ALASKA 99611-7794  
TELEPHONE 907-283-7535  
FAX 907-283-3014



# MEMORANDUM

**TO:** Kim Wannamaker, Police Lieutenant  
**FROM:** Keith Kornelis, Public Works Manager *(KK)*  
**DATE:** August 21, 2003  
**SUBJECT:** Dip Net Fishery – 2003 Expenses at Kenai Boating Facility

### MATERIALS AND CONTRACT SERVICES

Portable Toilets, 4 ea.	\$980.00
Dumpster Rental	389.00
Misc. Office Supplies & Receipt Books	192.00
Extra Pumping of Septic Tank	215.00
Payment Envelopes	2,310.00
Setting Ramp Floats and Pilings	330.00
Dock & Parking Lot Signs	750.00
Miscellaneous	261.00
Backhoe – Dig Out Ramps	900.00
Kids Don't Float Life Jackets	120.00
<b>Total</b>	<b>\$6,447.00</b>

### LABOR ESTIMATE

Setting and pulling ramp floats and pilings \$28/hr. X 4 men X 3 hrs. x 2	\$672.00
Collecting Launch Ramp Fees P&R \$12/hr. (OT) & benefits 40% = \$17/hr. 5 ½ hrs. x 22 days = 121 hrs. x \$17 = \$2,057 Dock Hand = \$2,300	4,357.00
Cleaning & Hauling Mud off Ramps 4 hrs. x \$30/hr. = \$120 3 men X 10 hrs. x \$30/hr. = \$900	1,020.00
Parking Lot Painting & Delineators 2 men x 10 hrs. x \$28/hr. = \$560	560.00
<b>Total</b>	<b>\$6,609.00</b>

**Grand Total**

**\$13,056.00**

Note: Most but not all expenses are due to the Dip Net Fishery

# DIP NET PARKING AND L-RAMP REVENUE 2003

COLLECTION DATE	NORTHSIDE PARKING	SOUTHSIDE PARKING	DOCK PARKING	DOCK L-RAMP	DAY TOTALS	FY02 DAY TOTALS	FY02 CUMULATIVE
07/10/03	617.00	50.00	10.00	702.50	1,379.50	3,771.01	
07/11/03	897.00	425.00			1,322.00	2,190.18	5,961.19
07/12/03	2,828.10	566.25			3,394.35	841.05	6,802.24
07/13/03				6,300.00	6,300.00	8,709.20	15,511.44
07/14/03	5,033.65	555.00	35.00	2,095.00	7,718.65	1,625.00	17,136.44
07/15/03	3,069.00		125.00	2,570.00	5,764.00	2,483.80	19,620.24
07/16/03	2,225.50	1,171.00		3,195.00	6,591.50	3,400.70	23,020.94
07/17/03	2,615.25	660.00		2,780.00	6,055.25	4,216.94	27,237.88
07/18/03	4,674.00	910.00	50.00	215.00	5,849.00	4,201.00	31,438.88
07/19/03	5,267.00	919.00			6,186.00	2,211.60	33,650.48
07/20/03	3,061.00	1,532.75	185.00	10,216.00	14,994.75	3,276.83	36,927.31
07/21/03	1,995.00	345.00		1,940.00	4,280.00	1,979.00	38,906.31
07/22/03	2,624.00	250.00	30.00	2,120.00	5,024.00	8,451.93	47,358.24
07/23/03	1,774.10	830.00	15.00	2,145.00	4,764.10	1,368.00	48,726.24
07/24/03	2,452.05	765.00		1,075.00	4,292.05	3,863.44	52,589.68
07/25/03	2,340.00	520.00			2,860.00	3,356.29	55,945.97
07/26/03	4,139.70	809.00			4,948.70	2,945.60	58,891.57
07/27/03	2,421.00	398.00		4,392.00	7,211.00	2,515.28	61,406.85
07/28/03	515.00		232.00	977.00	1,724.00	1,150.00	62,556.85
07/29/03	1,480.80	120.00	75.00	669.00	2,344.80	4,995.75	67,552.60
07/30/03	1,732.01	192.00		855.00	2,779.01	540.00	68,092.60
07/31/03	1,174.13	320.00		650.00	2,144.13	2,793.04	70,885.64
<b>TOTALS</b>	<b>\$52,935.29</b>	<b>\$11,338.00</b>	<b>\$757.00</b>	<b>\$42,896.50</b>	<b>\$107,926.79</b>	<b>\$70,885.64</b>	

NORTH/SOUTH SIDE PARKING -----	\$64,273.29
DOCK LAUNCH/PARKING -----	\$43,653.50
TOTAL -----	\$107,926.79

Park \$6,000      Pub \$1,000  
 Lemp 10,000      15,000  
          15,000      35,000

! Dock  
 o L-Ramp  
 Improvements  
 \$10,000 in  
 increased  
 function of launches





September 2, 2003

Quotation No. #13039-16643

Chuck Kopp  
Kenai Police Dept  
107 South Willow  
Kenai, AK 99611

Dear Chuck:

We have the pleasure of offering for your consideration the following quotation, subject to the conditions of acceptance listed, which together constitutes our formal offer.

Our quotation for the Tioga Special vault toilet is as follows:

The standard Tioga Special style precast concrete toilet building, in an integral earthtone color, barnwood textured exterior walls and simulated cedar shake textured roof, with ABS lined vaults; P.O.B. Spokane, Washington.

Per Building

\$ 19,304.56 EA

Freight of the building and two vaults to the accessible site at the Port in Anchorage, Alaska.

\$ 6,390.00 EA**Total \$ 25,694.56 EA**

**Note:** Freight to final destination, offloading, and earthwork to install facility shall be the responsibility of the customer. Vaults weigh 14,800 pounds each. Building weighs 43,700 pounds. Additional cost options include chase area storage room between the two restrooms, galvanized doors, fiberglass doors, marine package of non-corrosive stainless steel weld plates, cast in wall vents, window frames, and cleanout cover hatches, plastic urinals, and other exterior textures such as split face block, stucco, exposed aggregate, and ribbed metal roof.

A Subsidiary of L.D. Foster Company

**Precast Concrete Products**

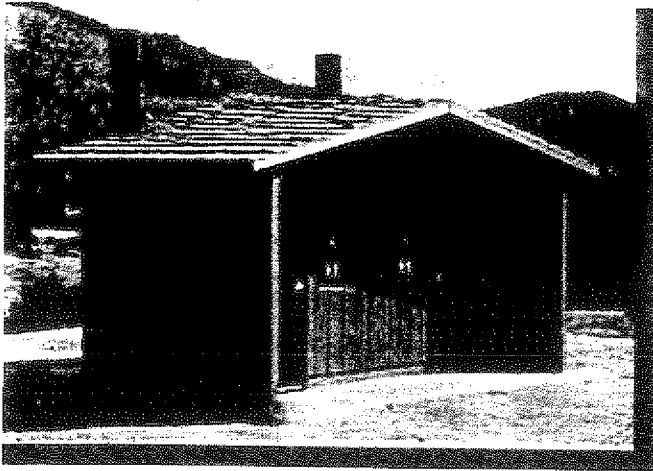
3608 North Sullivan Road, Bldg. 7

Spokane, WA 99218

Fax 509-928-8270 • Phone 509-921-1166

Toll Free 800-663-5789

Email: info@extinc.com • www.extinc.com



# CXT



Precast Concrete Products

## Tioga Special

- Sweet Smelling Technology
- Meets UFAS, A.D.A. and Title 24 statute of the State of California
- Vandal resistant building, vault & Toilet Components
- 4" thick steel reinforced concrete walls
- 5" thick steel reinforced concrete roof & floors
- (2) 1,000 gallons or 15,000 uses per containment vaults
- Black ABS one piece vault liner with side wall embeds
- Available in (25) different earthtone colors
- Barnwood, struck trowel, exposed aggregate, and split face block exterior wall textures
- Cedar shake or standing seam exterior roof textures.

The Tioga Special is a double vault toilet building designed with a 60" turning radius within each toilet room. The turning radius is measured exclusive of all fixtures, walls and door.



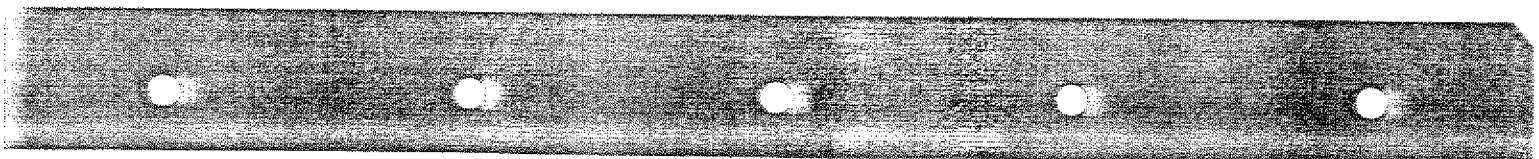
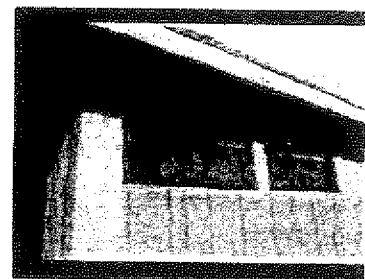
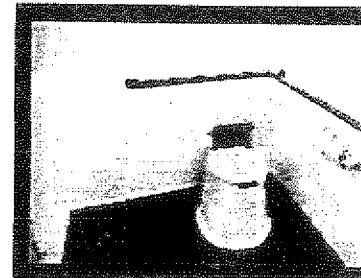
The Tioga Special comes with two separate 1,000 gallon vaults to hold waste. The double vault design prevents cross venting from toilet room to toilet room.

### Durability

The Tioga Special is engineered and designed for long life in extreme conditions. The building meets or exceeds the effects of a Zone-4 earthquake, a 120 mph wind load and a 250 pounds per square foot snow load.

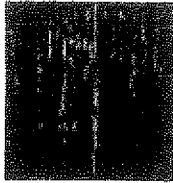
### Maintenance

The Tioga Special is extremely easy to maintain. With our steel reinforced 5,000 psi concrete construction, the building and vault will not rot, rust or burn. The building's interior is primed and painted with white paint to reflect natural light from the Lexan windows cast into the walls. Cleaning of the building's interior is easily accomplished with a brush and warm soapy water. The walls and roof structure are made with "colored thru concrete," which are painted with an exterior stain, followed by a anti-graffiti sealer.

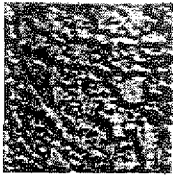


**Available in  
these textures:**

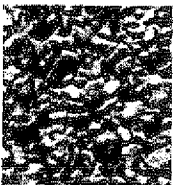
**Walls:**



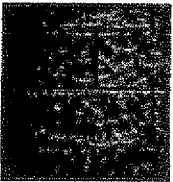
Barnwood  
Texture



Stucco Texture

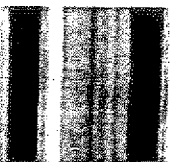


Exposed  
Aggregate Wall

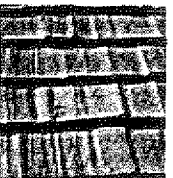


Split Face  
Block Texture

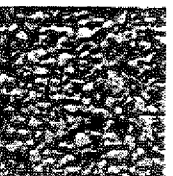
**Roofs:**



Ribbed Metal  
Texture



Cedar Shake  
Texture

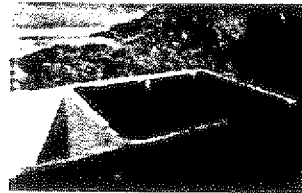


Exposed  
Aggregate Roof

**Also available in  
25 different  
earthtone colors.**

**Vault**

The waste collecting vaults are installed below ground level and are made of 4" thick reinforced concrete. The dimension of the vault units matches the perimeter of the building, providing a stable footing structure which supports the full weight of the building. Each vault can hold up to 1,000 gallons of waste, or 15,000 uses each, and is sloped, so that waste will drain to the clean out end of the vault. The vault is lined with a black



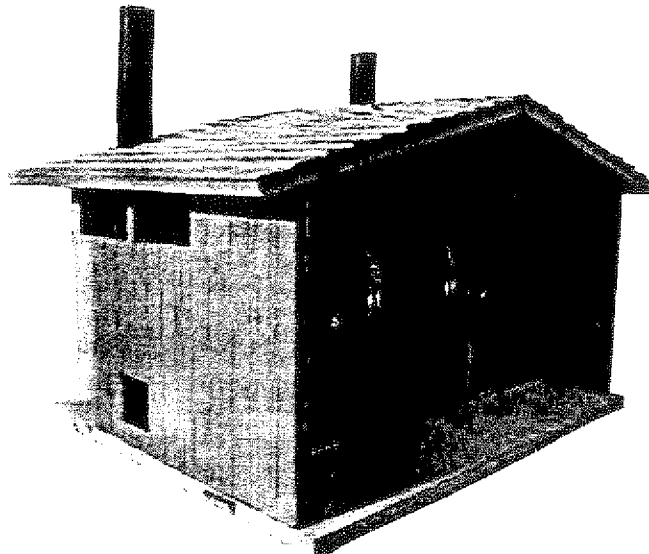
ABS plastic liner which is cast into the side walls of the concrete vault by way of dovetail embeds.

**Sweet Smelling  
Technology**

The building was designed with sweet smelling technology in mind. Two black plastic vent pipes, located on the back side of the building, always face south. When heated by the sun, the pipes create a continual air flow through louvered vents located in the building near the floor. The air flows down the riser, through

the vaults, and finally, up and out of the vent pipes. The air flow carries any smell out through the vent pipe, not through the building. Additionally, separate vaults insure the

rooms will not cross ventilate, keeping each room sweet smelling.



Precast Concrete Products

CXT Incorporated  
An L.B. Foster Company

Spokane Industrial Park  
3808 N. Sullivan Road Bldg. #7  
Spokane, WA 99216  
Telephone 509-921-8766  
Fax 509-928-8270  
Toll Free 800-696-5766

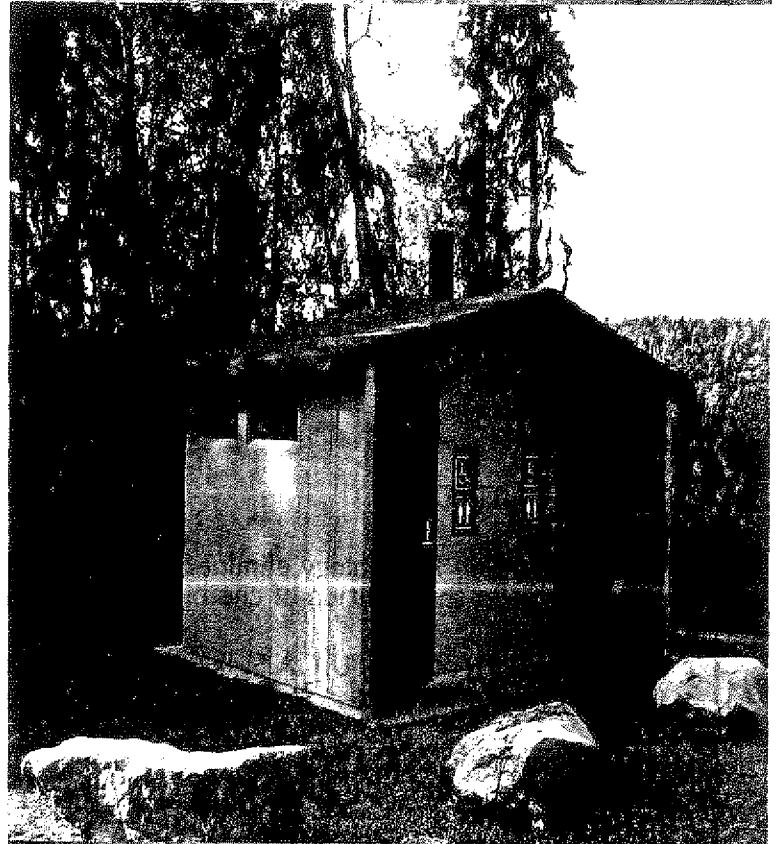
<http://www.cxtinc.com>



FM57026  
ISO 9001 Certified

# Concrete Inc.

*Pride in Product*



## Precast Double Vault Toilets

---

**CONCRETE INC.**

P.O. Box 2393  
Kenai, Alaska 99611  
(907) 283-4683 phone/fax

---

P.O. Box 2393  
Kenai, Alaska 99611  
(907) 283 4683  
phone/fax

Concrete Inc.'s Double Vault toilet is built to be the most cost effective outdoor rest facility available. Based on extensive US Forest Service research and design, it provides:

- ◊ Long term durability through the use of the highest quality building materials and components.
- ◊ Reduced vandalism through enhanced aesthetic appeal, the elimination of offensive odors and the near indestructible shell.
- ◊ Ease of routine maintenance from simplified housekeeping to periodic wash downs.
- ◊ Large capacity vaults minimize pumping expense

Add this to Concrete Inc.'s unmatched attention to detail, seamless caulk joints, cast-in coving and embossed slip resistant entry, the double vault is a proud addition to any public place.

## Product Summary

- ◊ Sweet Smelling Technology eliminates odors without the addition of chemicals
- ◊ Meets all current ADA, U.F.A.S. & California Title 24 statutes
- ◊ Alaska DOT approved
- ◊ Withstands Zone 4 earthquakes, hurricane force winds, and 240 pounds per square foot snow load.
- ◊ 60" Interior Turning Radius
- ◊ Steel reinforced concrete construction throughout
- ◊ Specified 28 day strength 5000 psi
- ◊ Simulated barnwood wall panels
- ◊ Simulated shake roof panels
- ◊ United Coating penetrating stain in a choice of colors

- ◊ Graffiti resistant seal coat
- ◊ Interior walls are epoxy finished, floors are epoxy non-slip mastic
- ◊ 18 gauge steel doors, polyurethane finish, Schlage heavy duty lock set, brush type door sweep, LCN all-weather door closers
- ◊ Two 1000 gallon capacity vaults at 15,000 uses each
- ◊ Effluent impervious epoxy vault lining
- ◊ Heavy duty seat and cover assembly and cross linked polyurethane handi-cap toilet risers
- ◊ Stainless coat hooks and grab bars
- ◊ Lockable roll type toilet paper dispenser
- ◊ Components secured with tamper proof fasteners
- ◊ Translucent Lexan windows
- ◊ 12" ID black, unpainted, polyethylene plastic vent pipe

General manager, Ray Rowley uses his 30 years experience in the concrete field to present the finest of concrete precast products.

Please feel free to contact him at the number listed on this brochure or e-mail us at [concrete@ptialaska.net](mailto:concrete@ptialaska.net)

