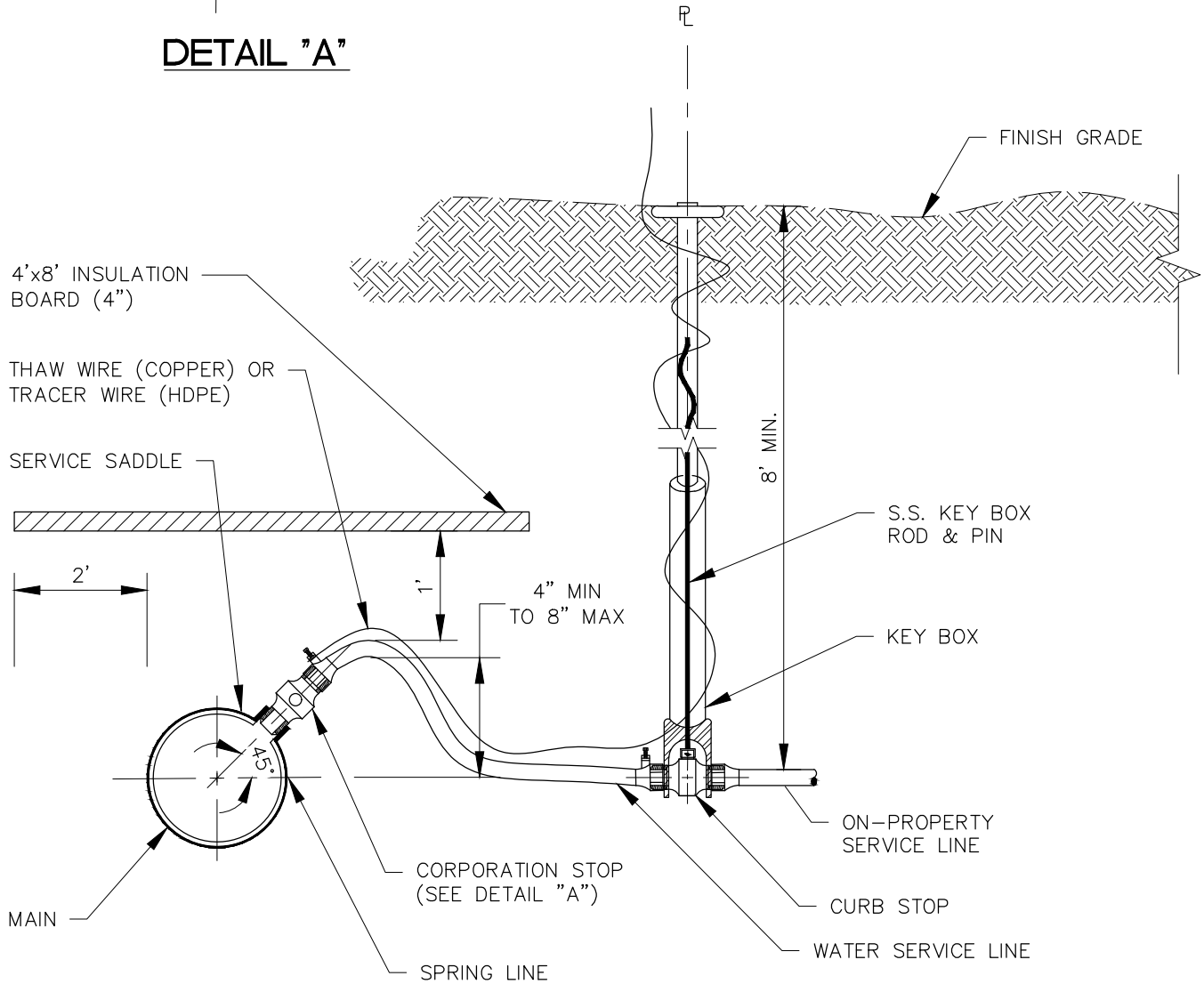


DETAIL "A"



NOTES:

1. STAINLESS STEEL (SS) WRAP AROUND SERVICE SADDLE TO BE USED ON ALL TAPS. TAPS MUST BE A MINIMUM OF 3' APART.
2. THAW WIRE SHALL BE LAID PARALLEL TO THE SERVICE LINE WITHOUT CONTACTING THE SERVICE LINE. TRACER WIRE SHALL BE WRAPPED OR TAPED TO HDPE SERVICE LINE.
3. TRANSITION BETWEEN CORPORATION/CURB STOPS AND HDPE SERVICE LINES SHALL BE MADE WITH POLY-CAM ADAPTER.

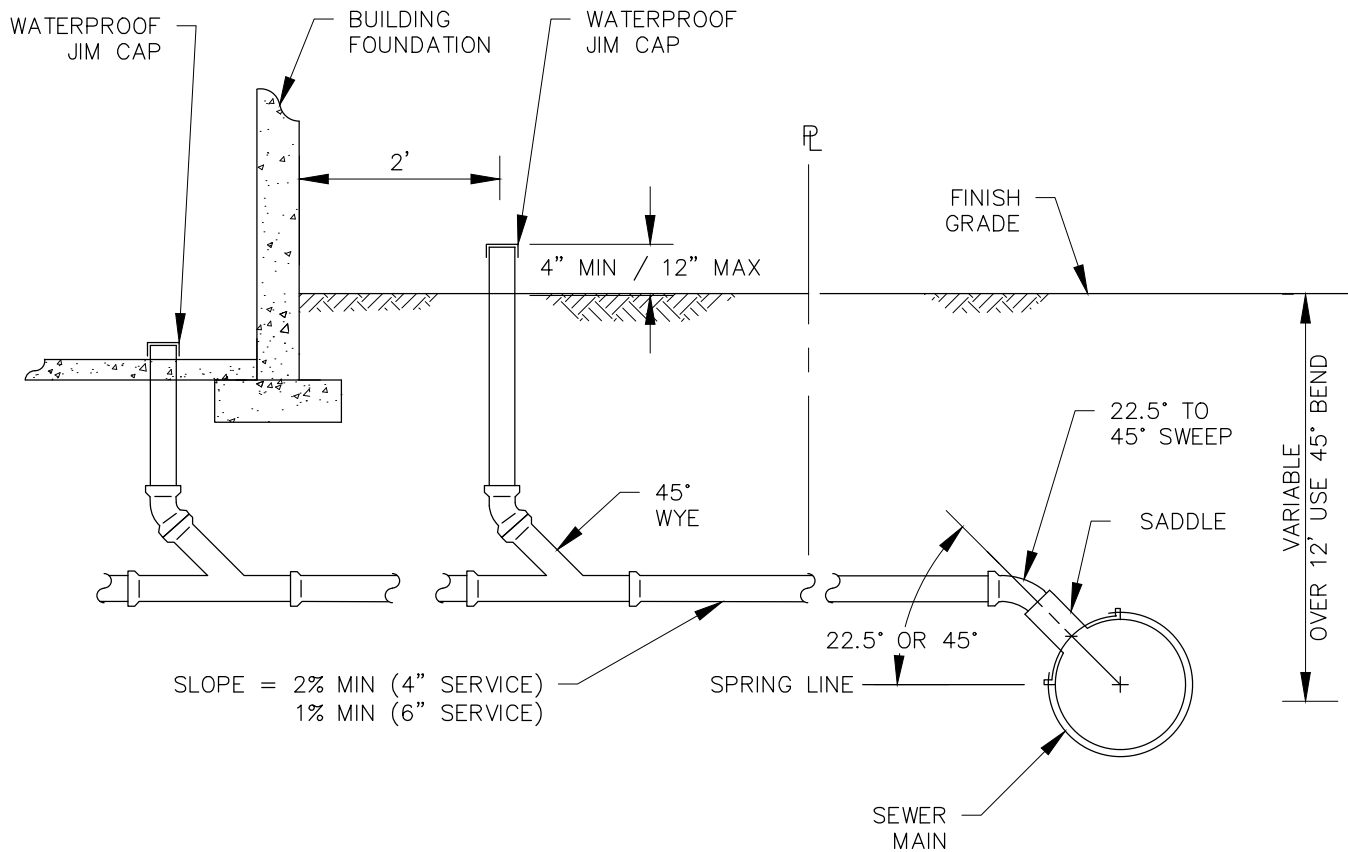


SCALE:
NTS
APPROVED:
COK
REVISED:
04/06/23

**WATER SERVICE
CONNECTION 1"**

SECTION

DETAIL



NOTES:

1. PIPE SHALL BE CLEANED PRIOR TO SADDLE INSTALLATION.
2. MINIMUM STANDARD BURIAL DEPTH OF SEWER SERVICE PIPE IS EIGHT FEET (8') TO TOP OF PIPE. WHERE LESS THAN EIGHT FEET (8') OF COVER OVER PIPE IS REQUIRED, ONE INCH (1") OF RIGID INSULATION MAY BE SUBSTITUTED PER FOOT OF SOIL COVER. MINIMUM SOIL COVER ABOVE INSULATION SHALL NOT BE REDUCED TO LESS THAN FOUR AND A HALF FEET (4.5').
3. INTERIOR CLEANOUTS SHALL BE PLACED IN A LOCATION ACCESSIBLE FOR CLEANING, IF NECESSARY.



SCALE:
NTS
APPROVED:
COK
REVISED:
04/06/23

GRAVITY SANITARY SEWER SERVICE CONNECTION

SECTION
DETAIL

MATERIALS LIST

A. WATER SERVICE CONNECTION

ALL COMPONENTS IN DIRECT CONTACT WITH POTABLE WATER SHALL CARRY AN NSF-61 LISTING.

1. WATER SERVICE LINE (COPPER) – ONE-INCH (1”) DIAMETER SOFT-DRAWN, TYPE K, SEAMLESS, ANNEALED, ASTM B88 COMPLIANT.
2. WATER SERVICE LINE (HDPE) – ONE-INCH (1”) DIAMETER, SDR 11, MANUFACTURED FROM PE4710 POLYETHYLENE COMPOUNDS THAT MEET OR EXCEED ASTM D3350 CELL CLASSIFICATION 445574, IN ACCORDANCE WITH AWWA C906.
3. KEYBOXES – MUELLER 10306 OR AY MCDONALD 5604ATW.
4. CURB STOPS – MUELLER H-15214N OR FORD METER BOX Z22-444.
5. CORPORATION STOPS – INLET END SHALL HAVE AWWA/CC TAPER AND OUTLET END SHALL HAVE COPPER FLARE STRAIGHT CONNECTION WITH INTEGRAL WIRE CONNECTOR. MUELLER B25000-07, FORD METER BOX FB600-4-NL, OR AY MCDONALD 74701BA.
6. TUBE NUT WITH INTEGRAL WIRE CONNECTOR – MUELLER 92608, FORD METER BOX CTN-4-THW OR AY MCDONALD 4700A.
7. THAW WIRE – #2 AWG STRANDED COPPER CONDUCTOR RATED FOR 600V, INSULATED WITH HMWPE AND APPROVED FOR USE IN BURIED LOW TEMPERATURE SERVICE.
8. TRACER WIRE – #10 AWG HIGH-STRENGTH COPPER CLAD STEEL WITH A 30-MIL HDPE INSULATION JACKET (BLUE COLOR), MANUFACTURED BY COPPERHEAD INDUSTRIES OR AN APPROVED EQUAL.
9. SERVICE SADDLE – ROMAC 306 OR POWERSEAL 3412AS.
10. HDPE COUPLING – POLY-CAM SERIES 914.
11. INSULATION – EXTRUDED OR EXPANDED POLYSTYRENE FOAM BOARD, MINIMUM TWO-INCH (2”) BY TWO- FEET (2’) BY EIGHT- FEET (8’), MINIMUM 60-PSI COMPRESSIVE STRENGTH, MINIMUM R-VALUE OF FOUR AND A HALF (4.5) PER INCH.

B. SANITARY SEWER SERVICE CONNECTION

1. SERVICE PIPE – 4” OR 6” DIAMETER, DUCTILE IRON PIPE WITH A MINIMUM THICKNESS CLASS OF 50, DR 18 C900 PVC PIPE WHICH CONFORMS TO THE REQUIREMENTS OF AWWA C900, OR SDR 11 HDPE MANUFACTURED FROM PE4710 POLYETHYLENE COMPOUNDS THAT MEET OR EXCEED ASTM D3350 CELL CLASSIFICATION 445574.
2. SERVICE SADDLE – ROMAC STYLE CB OR POWERSEAL MODEL EL.
3. INSULATION – EXTRUDED OR EXPANDED POLYSTYRENE FOAM BOARD, MINIMUM TWO-INCH (2”) BY TWO- FEET (2’) BY EIGHT- FEET (8’), MINIMUM 60 PSI COMPRESSIVE STRENGTH, MINIMUM R-VALUE OF FOUR AND A HALF (4.5) PER INCH.
4. TEST PLUG – REMOVABLE AND AIRTIGHT. CHERNE’S GRIPPER PLUG OR APPROVED EQUAL.

	SCALE:	<h1>MATERIALS OF CONSTRUCTION</h1>	SECTION
	APPROVED:		
	REVISID:		
	NTS		
	COK		
	04/06/23		DETAIL