



WATER & SEWER SERVICE CONNECTION PERMIT

1. APPLICANT & PROPERTY OWNER INFORMATION

Applicant Name:

Property Owner (if different):

Mailing Address:

Contact Phone:

Email Address:

2. PROPERTY LEGAL DESCRIPTION & ADDRESS

Physical Site Address of Connection:

KPB Tax Parcel ID:

Lot:

Block:

Subdivision:

3. REQUESTED SERVICE SCOPE

Water Service

- New Connection / Main Tap
- Extension on Property
- Line Repair / Replacement
- Disconnection / Abandonment

PIPE SIZE / MATERIAL SPEC:

Sewer Service

- New Connection / Main Tap
- Extension on Property
- Line Repair / Replacement
- Disconnection / Abandonment

PIPE SIZE / MATERIAL SPEC:

4. CONTRACTOR / INSTALLER INFORMATION

Contractor/Company Name:

State License Number:

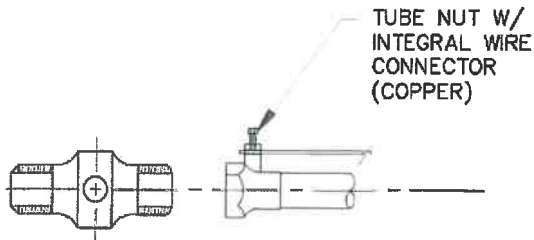
City Specialty Bond Number:

5. APPLICANT COVENANTS & SIGNATURES

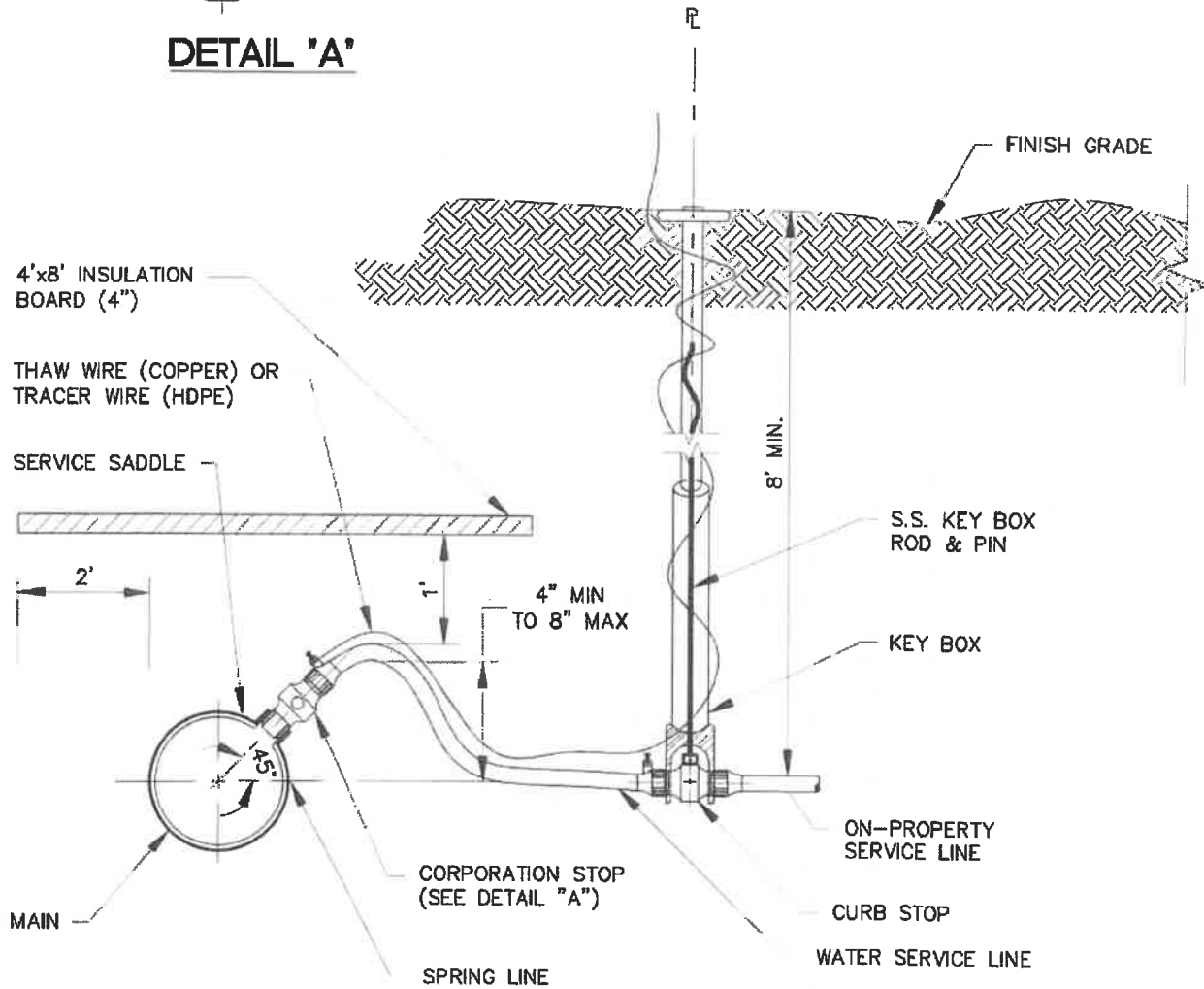
I hereby certify that all information supplied is correct, and I agree to strictly comply with all provisions of the Kenai Municipal Code. I agree to pay all applicable connection, inspection, and deposit fees before water is turned on. I understand that only authorized City of Kenai personnel are permitted to operate the main shut-off valves.

APPLICANT SIGNATURE

DATE



DETAIL 'A'



NOTES:

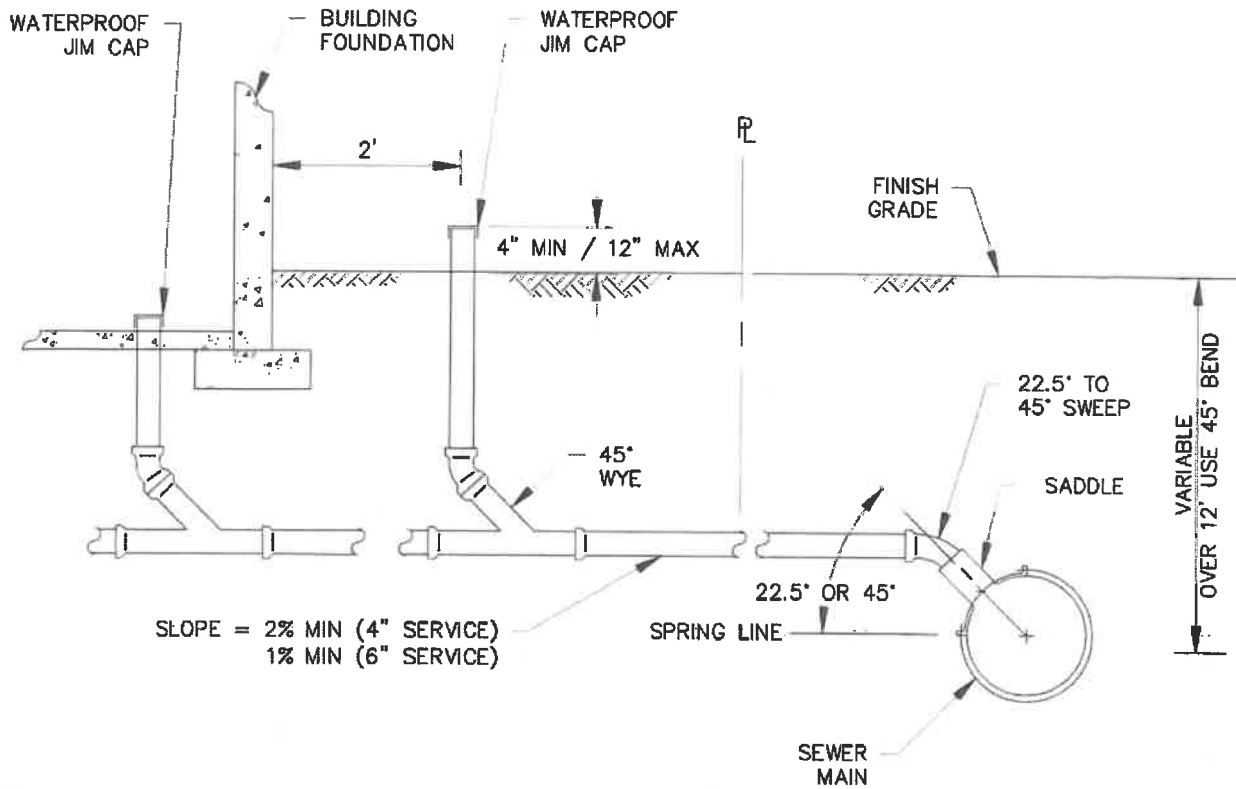
1. STAINLESS STEEL (SS) WRAP AROUND SERVICE SADDLE TO BE USED ON ALL TAPS. TAPS MUST BE A MINIMUM OF 3' APART.
2. THAW WIRE SHALL BE LAID PARALLEL TO THE SERVICE LINE WITHOUT CONTACTING THE SERVICE LINE. TRACER WIRE SHALL BE WRAPPED OR TAPED TO HDPE SERVICE LINE.
3. TRANSITION BETWEEN CORPORATION/CURB STOPS AND HDPE SERVICE LINES SHALL BE MADE WITH POLY-CAM ADAPTER.
4. PIPE MUST BE BEDDED AROUND ALL TAPS WITH 1/4" MINUS ANGULAR ROCK OR PEA GRAVEL MIX TO A DEPTH OF 2' ABOVE TOP OF MAIN.



SCALE:
NTS
APPROVED:
COK
REVISED:
04/06/23

WATER SERVICE CONNECTION

SECTION
DETAIL



NOTES:

1. PIPE SHALL BE CLEANED PRIOR TO SADDLE INSTALLATION.
2. MINIMUM STANDARD BURIAL DEPTH OF SEWER SERVICE PIPE IS EIGHT FEET (8') TO TOP OF PIPE. WHERE LESS THAN EIGHT FEET (8') OF COVER OVER PIPE IS REQUIRED, ONE INCH (1") OF RIGID INSULATION MAY BE SUBSTITUTED PER FOOT OF SOIL COVER. MINIMUM SOIL COVER ABOVE INSULATION SHALL NOT BE REDUCED TO LESS THAN FOUR AND A HALF FEET (4.5').
3. INTERIOR CLEANOUTS SHALL BE PLACED IN A LOCATION ACCESSIBLE FOR CLEANING, IF NECESSARY.



SCALE:
NTS
APPROVED:
COK
REVISED:
04/06/23

**GRAVITY SANITARY SEWER
SERVICE CONNECTION**

SECTION

DETAIL

MATERIALS LIST

A. WATER SERVICE CONNECTION

ALL COMPONENTS IN DIRECT CONTACT WITH POTABLE WATER SHALL CARRY AN NSF-61 LISTING.

1. WATER SERVICE LINE (COPPER) - ONE-INCH (1") DIAMETER SOFT-DRAWN, TYPE K, SEAMLESS, ANNEALED, ASTM B88 COMPLIANT.
2. WATER SERVICE LINE (HOPE) - ONE-INCH (1") DIAMETER, SDR 11, MANUFACTURED FROM PE4710 POLYETHYLENE COMPOUNDS THAT MEET OR EXCEED ASTM D3350 CELL CLASSIFICATION 445574, IN ACCORDANCE WITH AWWA C906.
3. KEYBOXES - MUELLER 10306 OR AY MCDONALD 5604ATW.
4. CURB STOPS - MUELLER H-15214N OR FORD METER BOX Z22-444.
5. CORPORATION STOPS - INLET END SHALL HAVE AWWA/CC TAPER AND OUTLET END SHALL HAVE COPPER FLARE STRAIGHT CONNECTION WITH INTEGRAL WIRE CONNECTOR. MUELLER B25000-07, FORD METER BOX FB600-4-NL, OR AY MCDONALD 74701BA.
6. TUBE NUT WITH INTEGRAL WIRE CONNECTOR - MUELLER 92608, FORD METER BOX CTN-4-THW OR AY MCDONALD 4700A.
7. THAW WIRE - #2 AWG STRANDED COPPER CONDUCTOR RATED FOR 600V, INSULATED WITH HMWPE AND APPROVED FOR USE IN BURIED LOW TEMPERATURE SERVICE.
8. TRACER WIRE - #10 AWG HIGH-STRENGTH COPPER CLAD STEEL WITH A 30-MIL HOPE INSULATION JACKET (BLUE COLOR), MANUFACTURED BY COPPERHEAD INDUSTRIES OR AN APPROVED EQUAL.
9. SERVICE SADDLE - ROMAC 306 OR POWERSEAL 3412AS.
10. HOPE COUPLING - POLY-CAM SERIES 914.
11. INSULATION - EXTRUDED OR EXPANDED POLYSTYRENE FOAM BOARD, MINIMUM TWO-INCH (2") BY TWO-FEET (2') BY EIGHT-FEET (8'), MINIMUM 60-PSI COMPRESSIVE STRENGTH, MINIMUM R-VALUE OF FOUR AND A HALF (4.5) PER INCH.

B. SANITARY SEWER SERVICE CONNECTION

1. SERVICE PIPE - 4" OR 6" DIAMETER, DUCTILE IRON PIPE WITH A MINIMUM THICKNESS CLASS OF 50, DR 18 C900 PVC PIPE WHICH CONFORMS TO THE REQUIREMENTS OF AWWA C900, MUST BE USED WITHIN THE RIGHT OF WAY (ROW). FOR A 4" SERVICE ABS PIPE MAY BE USED FROM THE BUILDING UO TO THE CONNECTION POINT AT THE ROW.
2. SERVICE SADDLE - ROMAC STYLE CB OR POWERSEAL MODEL EL.
3. INSULATION - EXTRUDED OR EXPANDED POLYSTYRENE FOAM BOARD, MINIMUM TWO-INCH (2") BY TWO-FEET (2') BY EIGHT-FEET (8'), MINIMUM 60 PSI COMPRESSIVE STRENGTH, MINIMUM R-VALUE OF FOUR AND A HALF (4.5) PER INCH.
4. TEST PLUG - REMOVABLE AND AIRTIGHT. CHERNE'S GRIPPER PLUG OR APPROVED EQUAL.

DETAILS:

1. Contractors are not allowed to operate curb stops.
2. All operations of curb stops is to be done by City staff or Representative only.
3. The water and Sewer lines are to be inspected by City of Kenai staff before they are buried.
4. You must notify the city with a minimum of a 24 hour notice (not including weekends and Holidays) in advance of time requested for inspection.

	SCALE: NTS	MATERIALS OF CONSTRUCTION	SECTION
	APPROVED: COK		DETAIL
	REVISED: 04/06/23		