

**KENAI PARKS & RECREATION COMMISSION  
BEAUTIFICATION COMMITTEE  
WORK SESSION – LEIF HANSEN MEMORIAL PARK  
OCTOBER 5, 2023 – 6:00 P.M.  
KENAI CITY COUNCIL CHAMBERS  
210 FIDALGO AVE., KENAI, AK 99611  
\*Telephonic/Virtual Information Below\*  
[www.kenai.city](http://www.kenai.city)**

- A. **CALL TO ORDER**
- B. **INTRODUCTION** – Tyler Best, Parks and Recreation Director
- C. **COMMISSION DISCUSSION** – Leif Hansen Memorial Park Plaques & Fountain
- D. **ADDITIONAL PUBLIC COMMENT**
- E. **ADJOURNMENT**

**Join Zoom Meeting**

<https://us02web.zoom.us/j/83011264979>

**Meeting ID:** 830 1126 4979

**Passcode:** 570981

OR

**Dial In:** (253) 215-8782 or (301) 715-8592

**Meeting ID:** 830 1126 4979

**Passcode:** 570981



# KENAI

City of Kenai | 210 Fidalgo Ave, Kenai, AK 99611-7794 | 907.283.7535 | [www.kenai.city](http://www.kenai.city)

## MEMORANDUM

**TO:** Park and Recreation Commission and Beautification Committee  
**FROM:** Tyler Best, Parks and Recreation Director  
**DATE:** September 28, 2023  
**SUBJECT:** **Leif Hansen Memorial Park**

---

The purpose of this memo is to introduce the presentation that the Parks and Recreation Director will give on Leif Hansen Memorial Park. The presentation will contain a brief history of the park and its purpose in the community. Then, it will address past expansions and the addition of memorial plaques in the park. At the end of the presentation, the Commission and Committee will have a chance to discuss further park development.

---

# Leif Hansen Memorial Park

Expansion and future developments





# History

Land was donated by the Hansen Family

- Was to be used for a memorial park for the community
- Has undergone 1 multi phase expansion which is partially completed
- Since July of 2021 all memorial plaques have been reserved



## Currently the in the Park

- Memorial Plaques
  - All spaces are reserved most spots allow for memorial tree or shrub to be planted
- Memorial Rocks
  - Plan adopted but has been partially completed
- Memorial Benches
  - Plan adopted but has been partially completed
- Memorial statues
  - Several Memorial Sites in the Park
- Memorial fountain
  - Honoring Leif Hansen

---

# Mariners Memorial



---

# Leif Hansen Fountain Memorial

Fountain has maintenance issues

Need repair or replacement





---

## 9/11 and Veterans Memorial







## Current Hurdles

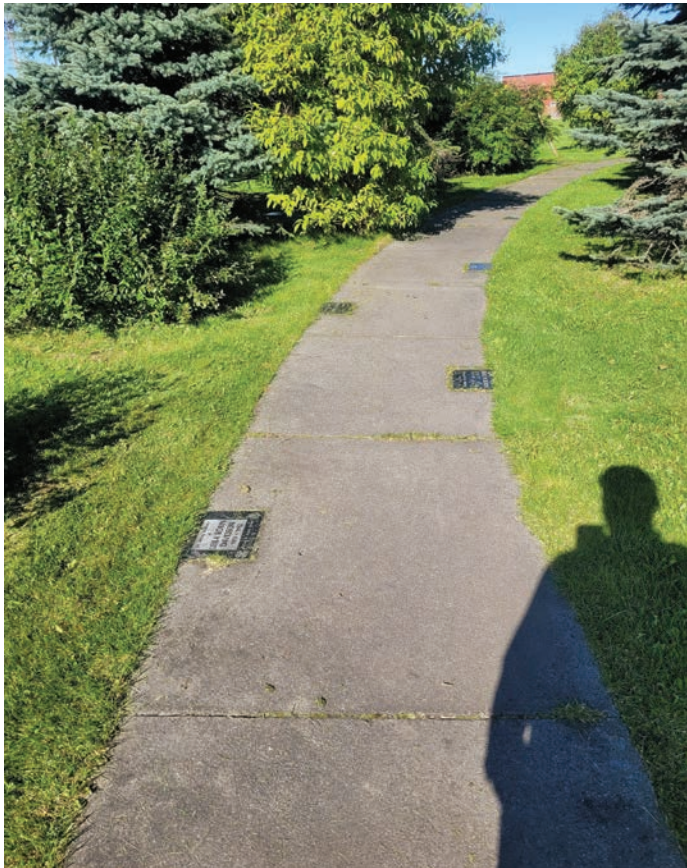
All of the Memorial Plaques spots are reserved

- quick solutions
- Long term solution ( CIP plan)

Leif Hansen Fountain

- Creative solutions
- Long Term solution (CIP Plan)

# Pathway



---

## Memorial Rocks



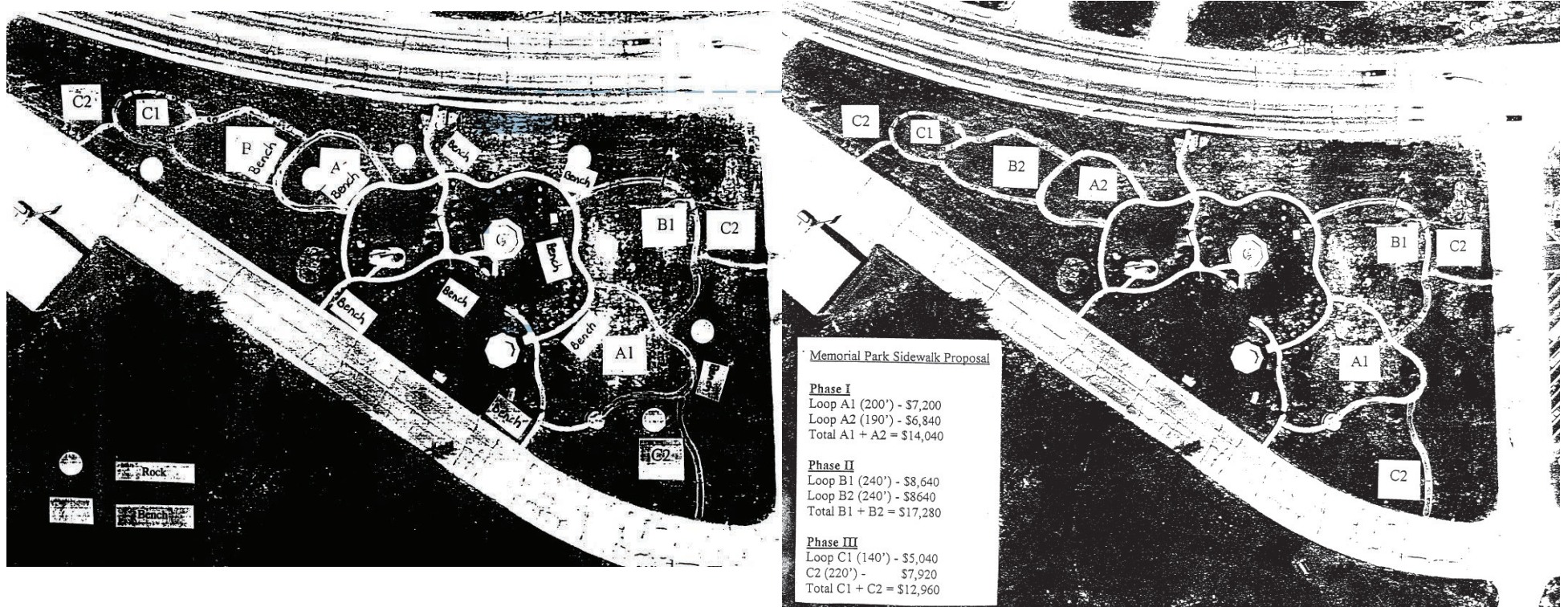


---

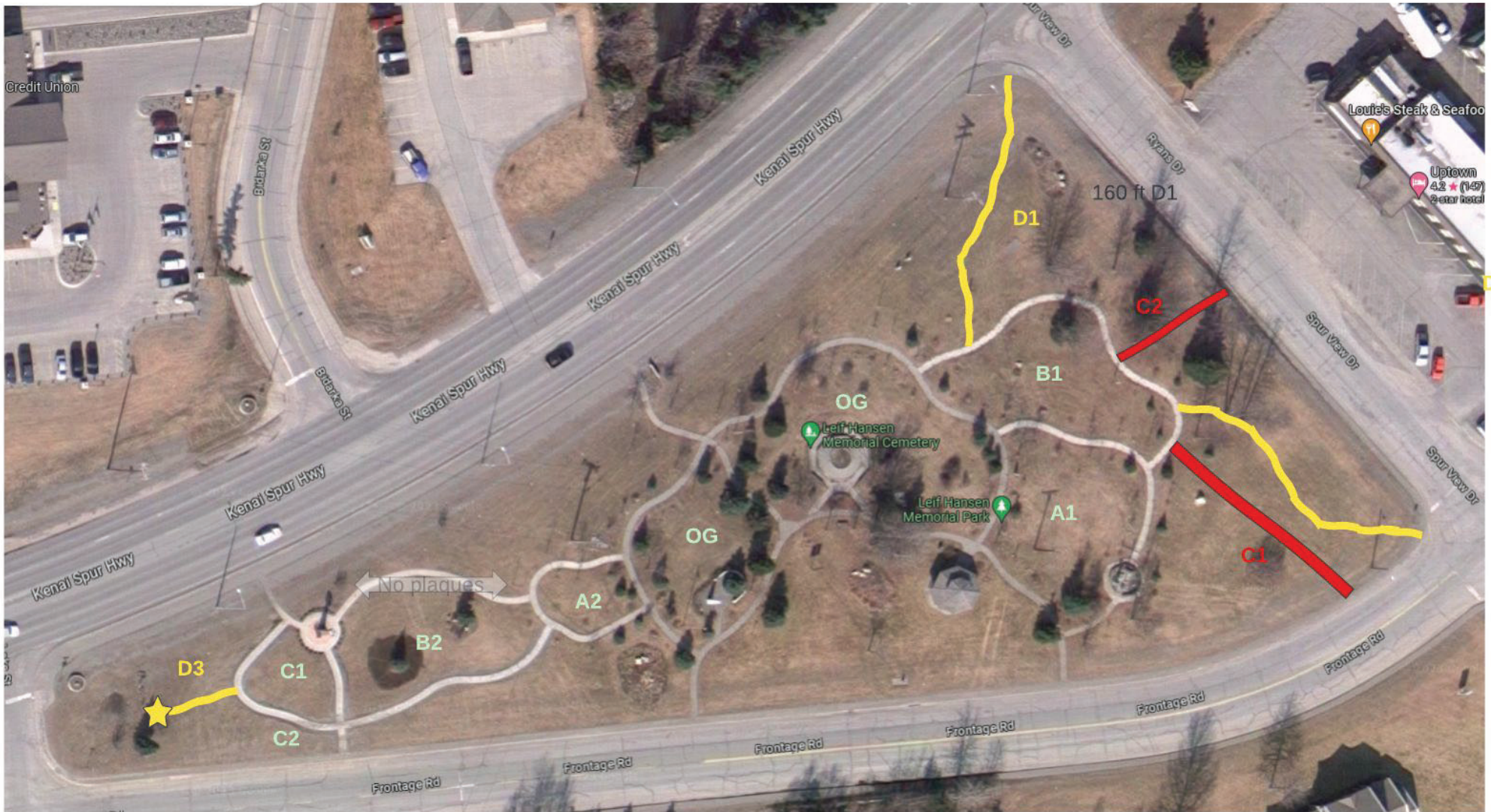
# Memorial Bench



# Past Expansion Plan

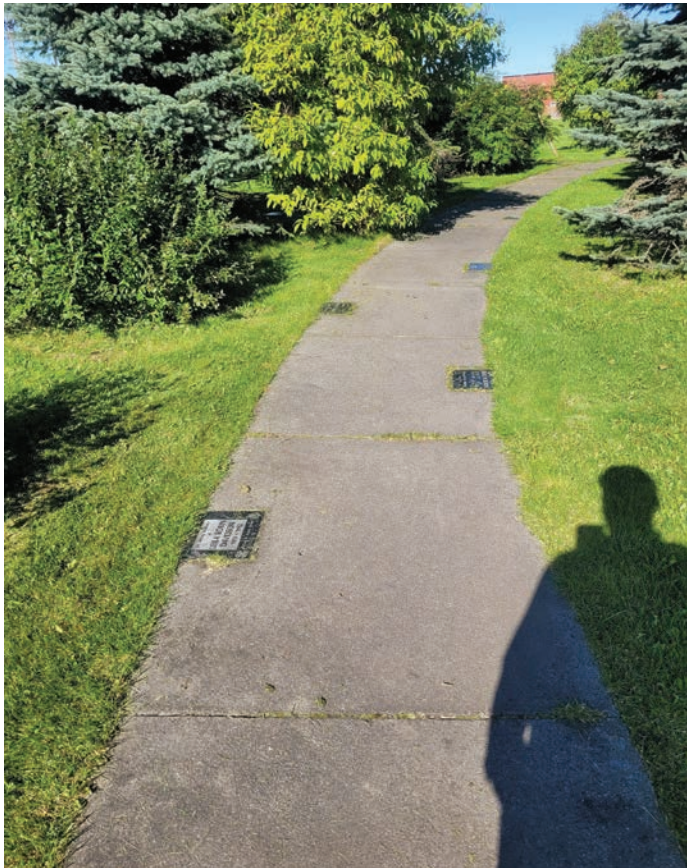








# Pathway Pattern





---

# Layout

- past layout was designed by previous department team and with Administration input
- view from the road
- Walk through the park
- spacing





## Future layout

- previous plan will not longer work with installation of trees but we could allow shrubs
- several plaques would have to be relocated
- Additions to the park now



## Memorial Benches and Rock

- rocks
- restoration of old benches



## Short term solution

- We have a section of path that we can add plaques in the grass
- This would add 24 -48 spots
- Depend upon the pattern chosen
- These would be memorial plaque spots that were not designed for shrubs or trees

---

# Ideas

Making Fountain itself a memorial, adding memorial bricks around it and replacing the water feature with an artistic light structure that would create a “light fountain”



# Ideas





# Ideas



Memorial Walls



— — — — —  
**Ideas**



---

# Ideas

Replacing Leif Hansen with a memorial wall and adding a light feature



Memorial Walls



## Hurdles we can overcome today

- Pathway by the clock?

- Future Ideas for the Fountain?